

Converting Colors

Android(4292392371)

Have a look what the booklet for
Android(4292392371) contains.

Android(4292392371)	3
<i>Conversions</i>	4
<i>Details</i>	6
<i>Harmonies</i>	11
<i>Previews</i>	23
<i>Color Blindness Simulation</i>	26
<i>CSS Examples</i>	29

Color

Android(4292392371)

Conversions

Conversions Part 1

Format	Color
Hex	D8B5B3
RGB	216, 181, 179
RGB Percent	85%, 71%, 70%
CMY	0.1529, 0.2902, 0.2980
CMYK	0.00, 0.16, 0.17, 0.15
HSL	3°, 32%, 77%
HSV	3°, 17%, 85%
XYZ	52.9795, 50.9014, 49.6804
YIQ	191.2370, 21.5020, 6.7980

Conversions

Conversions Part 2

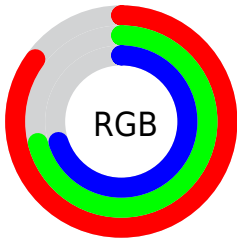
Format	Color
RYB	216, 181, 179
Decimal	14202291
CIELab	76.62, 12.27, 5.72
CIELCh	77, 13.536, 24.985
Yxy	50.9014, 0.3450, 0.3315
Android (android.graphics.Color)	4292392371 (0xFFD8B5B3)
YUV	191.2370, -6.0328, 21.7172
Hunter-Lab	71.3452, 7.6963, 8.6557

Details

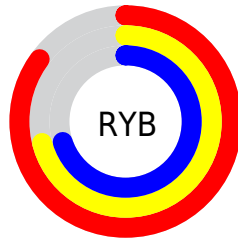
The Android color `4292392371` is a light color, and the websafe version is hex `CC9999`. A complement of this color would be `4289976024`, and the grayscale version is `4290756543`.

A 20% lighter version of the original color is `4294962667`, and `4288774270` is the 20% darker color. If you saturate the color by 10%, you get `4292387229`, and if you desaturate by 10%, it is `4292397513`.

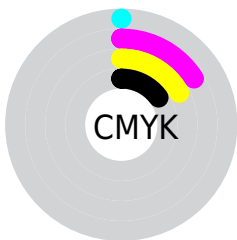
Distribution



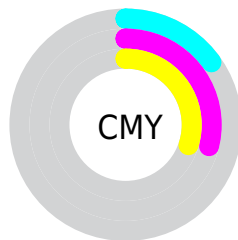
- Red (85%)
- Green (71%)
- Blue (70%)



- Red (85%)
- Yellow (71%)
- Blue (70%)



- Cyan (0%)
- Magenta (16%)
- Yellow (17%)
- Black (15%)



- Cyan (15%)
- Magenta (29%)
- Yellow (30%)

Brightness & Saturation Gradients

These gradients show how the Android color 4292392371 changes by changing the brightness by 10 percent. The first figure shows a shift by +10% for each color and the second figure -10%.

Similar to the brightness gradients but the following saturation gradients show a change of the Android color 4292392371 by changing the saturation by 10% instead.

 4292392371

 4292392371

4294967295

 4290550424

 4294962667

 4288774270

 4286998373

 4285353805

 4283709495

 4282130977

 4280683787

 4278190080

 4292392371

 4292392371

 4292387229

 4292397513

 4292381832

 4292402910

 4292376690

 4292408052

 4292371293

 4292411391

 4292366151

 4292360753

 4292355612

 4292350470

 4292348928

Harmonies

Analogous

The Analogous color harmony consists of three colors that are next to each other on the color wheel.



4292195776



4292392371



4292130985

Triad

The Triadic color harmony groups three colors that are evenly spaced from another and form a triangle on the color wheel.



4292392371



4289577902



4289576918

Complementary

The Complementary color scheme is a pair of colors which are on the opposite of each other on the color wheel.



4292392371



4289976024

Split Complementary

Split-complementary colors differ from the complementary color scheme. The scheme consists of three colors, the original color and two neighbors of the complement color.



4288791249



4292392371



4288857274

Square

The Square scheme is like the rectangle color scheme, but the four colors are evenly spaced on the color wheel.



4292392371



4290559910



4288529607



4290624468

Rectangle

The Rectangle color scheme consists of four colors that form a rectangle on the color wheel.



4292392371



4291672741



4288529607



4289315029

Sweetspot

The Sweet Spot groups the original color and five complimentary colors.



4292392371



4294964210



4292391894



4286609528



4278190080



4286611584

Same Dimension

The Same Dimension uses a secret algorithm to generate beautiful new colors.



4292392371



4294954185



4292396979



4285227360



4289399040



4281008640

Inverse Universe

The Inverse Universe completely reimagines the original color for something new.



4289976024



4291427583



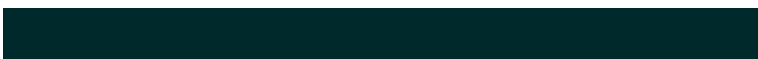
4289971416



4284509035



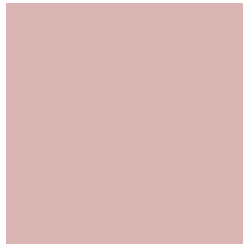
4278231723



4278200619

Previews

White Background



This preview shows how the Android color 4292392371 looks on a white background.

Color Contrast Check

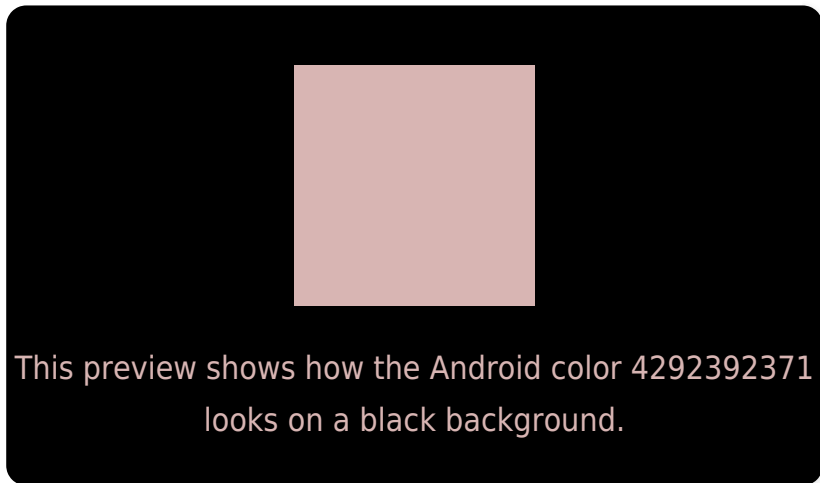
Large Text (above 18pt) WCAG AA × Fail

Any Text WCAG AA × Fail

Large Text (above 18pt) WCAG AAA × Fail

Any Text WCAG AAA × Fail

Black Background



Color Contrast Check

Large Text (above 18pt) WCAG AA ✓ Pass

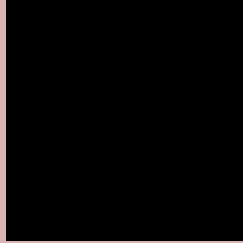
Any Text WCAG AA ✓ Pass

Large Text (above 18pt) WCAG AAA ✓ Pass

Any Text WCAG AAA ✓ Pass

If you want to check with other color combinations, try the [Color Contrast Checker](#).

Android 4292392371 Background



This preview shows how black text looks on a background with the Android color 4292392371.



This preview shows how white text looks on a background with the Android color 4292392371.

Color Blindness Simulation

Color vision deficiency is a very complex topic, and I could not describe the different causes any better than Wikipedia does, so if you want to learn more, you should check out their [article about color blindness](#).

Dichromacy



Trichromacy



Original Color
4292392371

Protanomaly
4291475894

Deuteranomaly
4292196019

Tritanomaly
4292457660

Monochromacy



Original Color
4292392371

Achromatopsia
4290756543

Achromatomaly
4291345339

CSS Examples

Text

The CSS property to change the color of the text to Android 4292392371 is called "color". The color property can be set on classes, ids or directly on the HTML element.

This example shows how text in the color `rgb(216, 181, 179)` looks like.

```
.text, #text, p{  
    color:rgb(216, 181, 179)  
}
```

If you want to add a text shadow in that color use the text-shadow property, you can generate a text shadow directly with our [CSS Text Shadow Generator](#).

Here you see how black text with a 4 pixel rgb(216, 181, 179) colored shadow looks like.

```
.shadow{ text-shadow: 4px 4px 2px rgb(216, 181, 179) }
```

Border

The CSS property to change the border of an element to Android 4292392371 is called "border". The border property can be set on classes, ids or directly on the HTML element.

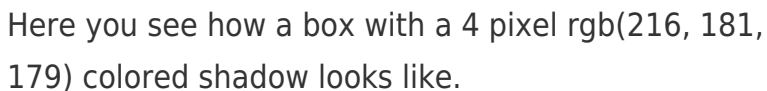
This example shows the color as border, it can be applied via the CSS property "border" or "border-color".

```
.border, #border, table{ border:4px solid rgb(216, 181, 179) }
```

If only the border color should be changed use the property `border-color`.

```
.border{ border-color:rgb(216, 181, 179) }
```

If you want to add a box shadow in that color use:



Here you see how a box with a 4 pixel `rgb(216, 181, 179)` colored shadow looks like.

```
.boxshadow{ -moz-box-shadow:4px 4px 4px 4px rgb(216, 181, 179); -webkit-box-shadow:4px 4px 4px 4px rgb(216, 181, 179); box-shadow:4px 4px 4px 4px rgb(216, 181, 179) }
```

Background

The CSS property to change the background color of an element to Android 4292392371 is called "background". The background property can be set on classes, ids or directly on the HTML element.

```
.background, #background, body{  
background: rgb(216, 181, 179) }
```

If only the background color should be changed can be used:

```
.background{ background-color: rgb(216,  
181, 179) }
```

This example shows the color as background, it is applied via the CSS property "background".

To optimize and compress your CSS code, you can use our [online CSS compressor and optimizer](#) based on csstidy. If you want to create a linear or radial gradient as background or border, check our [CSS Gradient Generator](#).

Hey! You found this booklet interesting? Support Converting Colors with the new Membership Option!

The pro membership hides all ads, plus gives you double the colors in the color bucket, and more awesome pro features!

[Learn more, Memberships starting at \\$2.50/m!](#)

**Follow me
on Twitter!**

@ConvertingColor