

Converting Colors

Android(4292392872)

Have a look what the booklet for
Android(4292392872) contains.

Android(4292392872)	3
<i>Conversions</i>	4
<i>Details</i>	6
<i>Harmonies</i>	11
<i>Previews</i>	23
<i>Color Blindness Simulation</i>	26
<i>CSS Examples</i>	29

Color

Android(4292392872)

Conversions

Conversions Part 1

Format	Color
Hex	D8B7A8
RGB	216, 183, 168
RGB Percent	85%, 72%, 66%
CMY	0.1529, 0.2824, 0.3412
CMYK	0.00, 0.15, 0.22, 0.15
HSL	19°, 38%, 75%
HSV	19°, 22%, 85%
XYZ	52.3203, 51.2931, 44.1888
YIQ	191.1570, 24.4830, 2.3310

Conversions

Conversions Part 2

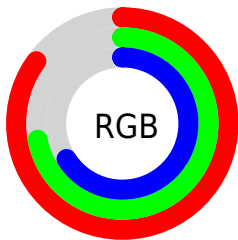
Format	Color
R_{YB}	216, 190, 168
Decimal	14202792
CIE _{Lab}	76.86, 9.53, 12.02
CIE _{LCh}	77, 15.344, 51.583
Yxy	51.2931, 0.3540, 0.3470
Android (android.graphics.Color)	4292392872 (0xFFD8B7A8)
YUV	191.1570, -11.4164, 21.7873
Hunter-Lab	71.6192, 5.0669, 13.5517

Details

The Android color `4292392872` is a light color, and the websafe version is hex `FFCCCC`. A complement of this color would be `4289251800`, and the grayscale version is `4290756543`.

A 20% lighter version of the original color is `4294963167`, and `4288774772` is the 20% darker color. If you saturate the color by 10%, you get `4292389010`, and if you desaturate by 10%, it is `4292396734`.

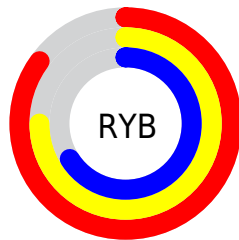
Distribution



Red (85%)

Green (72%)

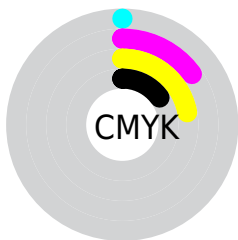
Blue (66%)



Red (85%)

Yellow (75%)

Blue (66%)

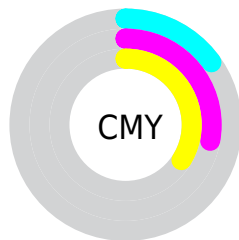


Cyan (0%)

Magenta (15%)

Yellow (22%)

Black (15%)



Cyan (15%)

Magenta (28%)

Yellow (34%)

Brightness & Saturation Gradients

These gradients show how the Android color 4292392872 changes by changing the brightness by 10 percent. The first figure shows a shift by +10% for each color and the second figure -10%.

Similar to the brightness gradients but the following saturation gradients show a change of the Android color 4292392872 by changing the saturation by 10% instead.



4292392872



4292392872

4294967295



4290550926



4294963167



4288774772

4294967292



4286998875



4285288772



4283644462



4282065945



4280684288



4278190080



4292392872



4292392872

 4292389010

 4292396734

 4292385149

 4292400595

 4292381287

 4292404457

 4292377682

 4292408062

 4292373820

 4292411391

 4292369958

 4292366097

 4292363264

Harmonies

Analogous

The Analogous color harmony consists of three colors that are next to each other on the color wheel.



4292654260



4292392872



4291672994

Triad

The Triadic color harmony groups three colors that are evenly spaced from another and form a triangle on the color wheel.



4292392872



4288726713



4290493400

Complementary

The Complementary color scheme is a pair of colors which are on the opposite of each other on the color wheel.



4292392872



4289251800

Split Complementary

Split-complementary colors differ from the complementary color scheme. The scheme consists of three colors, the original color and two neighbors of the complement color.



4289380569



4292392872



4288267976

Square

The Square scheme is like the rectangle color scheme, but the four colors are evenly spaced on the color wheel.



4292392872



4289643692



4288529619



4291606479

Rectangle

The Rectangle color scheme consists of four colors that form a rectangle on the color wheel.



4292392872



4291018402



4288529619



4290100697

Sweetspot

The Sweet Spot groups the original color and five complimentary colors.



4292392872



4294964205



4292389066



4286609525



4278190080



4286611584

Same Dimension

The Same Dimension uses a secret algorithm to generate beautiful new colors.



4292392872



4294955194



4292398760



4285228128



4289410304



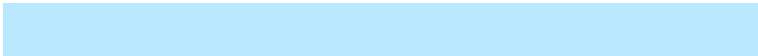
4281011712

Inverse Universe

The Inverse Universe completely reimagines the original color for something new.



4289251800



4290439679



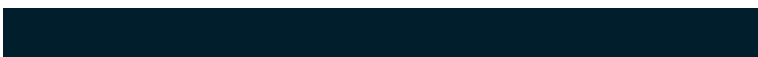
4289245912



4284508267



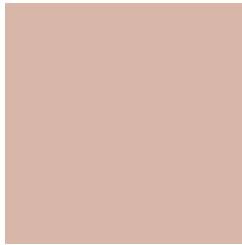
4278220203



4278197803

Previews

White Background



This preview shows how the Android color 4292392872 looks on a white background.

Color Contrast Check

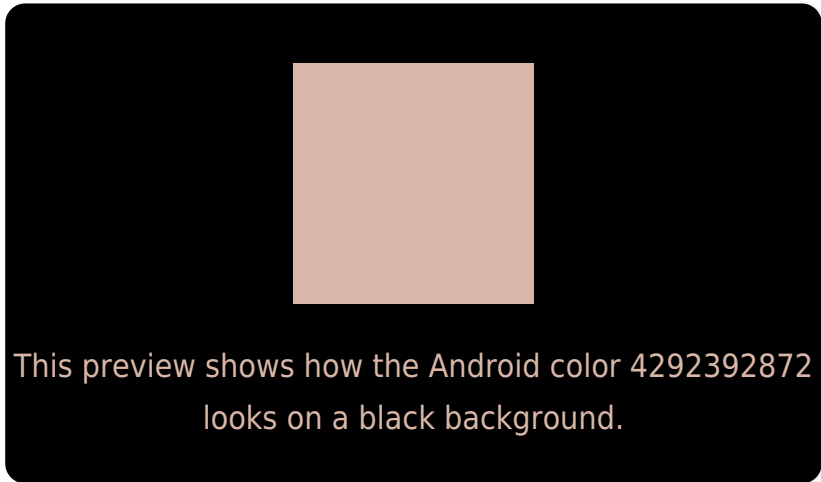
Large Text (above 18pt) WCAG AA × Fail

Any Text WCAG AA × Fail

Large Text (above 18pt) WCAG AAA × Fail

Any Text WCAG AAA × Fail

Black Background



Color Contrast Check

Large Text (above 18pt) WCAG AA ✓ Pass

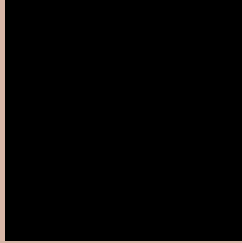
Any Text WCAG AA ✓ Pass

Large Text (above 18pt) WCAG AAA ✓ Pass

Any Text WCAG AAA ✓ Pass

If you want to check with other color combinations, try the [Color Contrast Checker](#).

Android 4292392872 Background



This preview shows how black text looks on a background with the Android color 4292392872.




This preview shows how white text looks on a background with the Android color 4292392872.

Color Blindness Simulation

Color vision deficiency is a very complex topic, and I could not describe the different causes any better than Wikipedia does, so if you want to learn more, you should check out their [article about color blindness](#).

Dichromacy





Tritanopia
4292588481

Trichromacy



Original Color
4292392872

Protanomaly
4291673002

Deuteranomaly
4292392872

Tritanomaly
4292523192

Monochromacy



Original Color
4292392872

Achromatopsia
4290756543

Achromatomaly
4291345591

CSS Examples

Text

The CSS property to change the color of the text to Android 4292392872 is called "color". The color property can be set on classes, ids or directly on the HTML element.

This example shows how text in the color `rgb(216, 183, 168)` looks like.

```
.text, #text, p{  
    color:rgb(216, 183, 168)  
}
```

If you want to add a text shadow in that color use the text-shadow property, you can generate a text shadow directly with our [CSS Text Shadow Generator](#).

Here you see how black text with a 4 pixel rgb(216, 183, 168) colored shadow looks like.

```
.shadow{ text-shadow: 4px 4px 2px rgb(216, 183, 168) }
```

Border

The CSS property to change the border of an element to Android 4292392872 is called "border". The border property can be set on classes, ids or directly on the HTML element.

This example shows the color as border, it can be applied via the CSS property "border" or "border-color".

```
.border, #border, table{ border:4px solid rgb(216, 183, 168) }
```

If only the border color should be changed use the property `border-color`.

```
.border{ border-color:rgb(216, 183, 168) }
```

If you want to add a box shadow in that color use:

Here you see how a box with a 4 pixel `rgb(216, 183, 168)` colored shadow looks like.

```
.boxshadow{ -moz-box-shadow:4px 4px 4px  
4px rgb(216, 183, 168); -webkit-box-  
shadow:4px 4px 4px 4px rgb(216, 183, 168);  
box-shadow:4px 4px 4px 4px rgb(216, 183,  
168) }
```

Background

The CSS property to change the background color of an element to Android 4292392872 is called "background". The background property can be set on classes, ids or directly on the HTML element.

```
.background, #background, body{  
background: rgb(216, 183, 168) }
```

If only the background color should be changed can be used:

```
.background{ background-color: rgb(216,  
183, 168) }
```

This example shows the color as background, it is applied via the CSS property "background".

To optimize and compress your CSS code, you can use our [online CSS compressor and optimizer](#) based on csstidy. If you want to create a linear or radial gradient as background or border, check our [CSS Gradient Generator](#).

Hey! You found this booklet interesting? Support Converting Colors with the new Membership Option!

The pro membership hides all ads, plus gives you double the colors in the color bucket, and more awesome pro features!

[Learn more, Memberships starting at \\$2.50/m!](#)

**Follow me
on Twitter!**

@ConvertingColor