

Converting Colors

Android(4292393150)

Have a look what the booklet for
Android(4292393150) contains.

Android(4292393150)	3
<i>Conversions</i>	4
<i>Details</i>	6
<i>Harmonies</i>	11
<i>Previews</i>	23
<i>Color Blindness Simulation</i>	26
<i>CSS Examples</i>	29

Color

Android(4292393150)

Conversions

Conversions Part 1

Format	Color
Hex	D8B8BE
RGB	216, 184, 190
RGB Percent	85%, 72%, 75%
CMY	0.1529, 0.2784, 0.2549
CMYK	0.00, 0.15, 0.12, 0.15
HSL	349°, 29%, 78%
HSV	349°, 15%, 85%
XYZ	54.7537, 52.5976, 55.9817
YIQ	194.2520, 17.1460, 8.6500

Conversions

Conversions Part 2

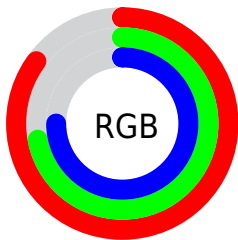
Format	Color
R _Y B	216, 184, 190
Decimal	14203070
CIE Lab	77.64, 12.43, 1.22
CIE LCh	78, 12.486, 5.605
Yxy	52.5976, 0.3352, 0.3220
Android (android.graphics.Color)	4292393150 (0xFFD8B8BE)
YUV	194.2520, -2.0962, 19.0730
Hunter-Lab	72.5242, 7.8449, 5.0008

Details

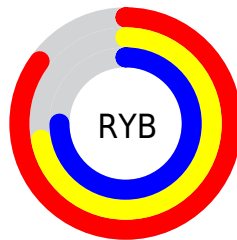
The Android color `4292393150` is a light color, and the websafe version is hex `FFCCCC`. A complement of this color would be `4290304210`, and the grayscale version is `4290953922`.

A 20% lighter version of the original color is `4294963446`, and `4288775049` is the 20% darker color. If you saturate the color by 10%, you get `4292387500`, and if you desaturate by 10%, it is `4292398800`.

Distribution



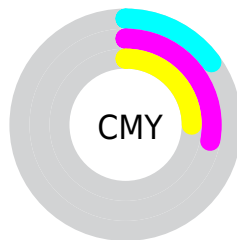
- Red (85%)
- Green (72%)
- Blue (75%)



- Red (85%)
- Yellow (72%)
- Blue (75%)



- Cyan (0%)
- Magenta (15%)
- Yellow (12%)
- Black (15%)



- Cyan (15%)
- Magenta (28%)
- Yellow (25%)

Brightness & Saturation Gradients

These gradients show how the Android color 4292393150 changes by changing the brightness by 10 percent. The first figure shows a shift by +10% for each color and the second figure -10%.

Similar to the brightness gradients but the following saturation gradients show a change of the Android color 4292393150 by changing the saturation by 10% instead.

 4292393150

 4292393150

4294967295

 4290551203

 4294963446

 4288775049

 4287064687

 4285354327

 4283710016

 4282197034

 4280684565

 4278583296

 4278190080

 4292393150

 4292393150

 4292387500

 4292398800

 4292382107

 4292404193

 4292376457

 4292409843

 4292371064

 4292411391

 4292365414

 4292359765

 4292354371

 4292348722

 4292345897

Harmonies

Analogous

The Analogous color harmony consists of three colors that are next to each other on the color wheel.



4291934666



4292393150



4292393395

Triad

The Triadic color harmony groups three colors that are evenly spaced from another and form a triangle on the color wheel.



4292393150



4290429869



4289381589

Complementary

The Complementary color scheme is a pair of colors which are on the opposite of each other on the color wheel.



4292393150



4290304210

Split Complementary

Split-complementary colors differ from the complementary color scheme. The scheme consists of three colors, the original color and two neighbors of the complement color.



4288923341



4292393150



4289578678

Square

The Square scheme is like the rectangle color scheme, but the four colors are evenly spaced on the color wheel.



4292393150



4291281065



4289054658



4290166999

Rectangle

The Rectangle color scheme consists of four colors that form a rectangle on the color wheel.



4292393150



4292197293



4289054658



4289185234

Sweetspot

The Sweet Spot groups the original color and five complimentary colors.



4292393150



4294964727



4291999960



4286609786



4278190080



4286611584

Same Dimension

The Same Dimension uses a secret algorithm to generate beautiful new colors.



4292393150



4294955482



4292395704



4285227106



4289396768



4281008136

Inverse Universe

The Inverse Universe completely reimagines the original color for something new.



4292393150



4294955482



4290301656



4285227106



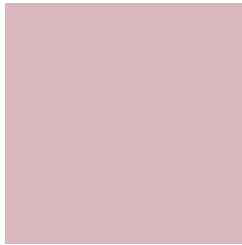
4289396768



4281008136

Previews

White Background



This preview shows how the Android color 4292393150 looks on a white background.

Color Contrast Check

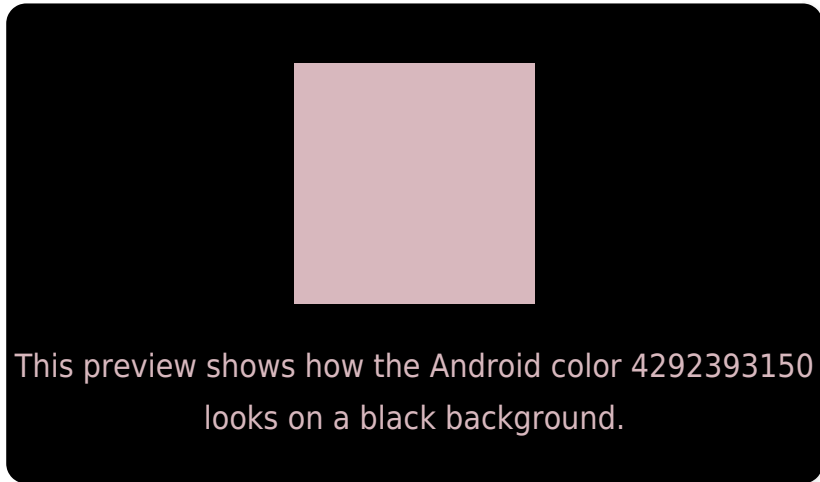
Large Text (above 18pt) WCAG AA × Fail

Any Text WCAG AA × Fail

Large Text (above 18pt) WCAG AAA × Fail

Any Text WCAG AAA × Fail

Black Background



Color Contrast Check

Large Text (above 18pt) WCAG AA ✓ Pass

Any Text WCAG AA ✓ Pass

Large Text (above 18pt) WCAG AAA ✓ Pass

Any Text WCAG AAA ✓ Pass

If you want to check with other color combinations, try the [Color Contrast Checker](#).

Android 4292393150 Background



This preview shows how black text looks on a background with the Android color 4292393150.



This preview shows how white text looks on a background with the Android color 4292393150.

Color Blindness Simulation

Color vision deficiency is a very complex topic, and I could not describe the different causes any better than Wikipedia does, so if you want to learn more, you should check out their [article about color blindness](#).


Dichromacy



Original Color
4292393150

Protanopia
4291018690

Deuteranopia
4292065982



Tritanopia
4292458437

Trichromacy



Original Color
4292393150

Protanomaly
4291542209

Deuteranomaly
4292196798

Tritanomaly
4292458434

Monochromacy



Original Color
4292393150

Achromatopsia
4290953922

Achromatomaly
4291477185

CSS Examples

Text

The CSS property to change the color of the text to Android 4292393150 is called "color". The color property can be set on classes, ids or directly on the HTML element.

This example shows how text in the color `rgb(216, 184, 190)` looks like.

```
.text, #text, p{  
    color:rgb(216, 184, 190)  
}
```

If you want to add a text shadow in that color use the text-shadow property, you can generate a text shadow directly with our [CSS Text Shadow Generator](#).

Here you see how black text with a 4 pixel rgb(216, 184, 190) colored shadow looks like.

```
.shadow{ text-shadow: 4px 4px 2px rgb(216, 184, 190) }
```

Border

The CSS property to change the border of an element to Android 4292393150 is called "border". The border property can be set on classes, ids or directly on the HTML element.

This example shows the color as border, it can be applied via the CSS property "border" or "border-color".

```
.border, #border, table{ border:4px solid rgb(216, 184, 190) }
```

If only the border color should be changed use the property `border-color`.

```
.border{ border-color:rgb(216, 184, 190) }
```

If you want to add a box shadow in that color use:

Here you see how a box with a 4 pixel `rgb(216, 184, 190)` colored shadow looks like.

```
.boxshadow{ -moz-box-shadow:4px 4px 4px  
4px rgb(216, 184, 190); -webkit-box-  
shadow:4px 4px 4px 4px rgb(216, 184, 190);  
box-shadow:4px 4px 4px 4px rgb(216, 184,  
190) }
```

Background

The CSS property to change the background color of an element to Android 4292393150 is called "background". The background property can be set on classes, ids or directly on the HTML element.

```
.background, #background, body{  
background: rgb(216, 184, 190) }
```

If only the background color should be changed can be used:

```
.background{ background-color: rgb(216,  
184, 190) }
```

This example shows the color as background, it is applied via the CSS property "background".

To optimize and compress your CSS code, you can use our [online CSS compressor and optimizer](#) based on csstidy. If you want to create a linear or radial gradient as background or border, check our [CSS Gradient Generator](#).

Hey! You found this booklet interesting? Support Converting Colors with the new Membership Option!

The pro membership hides all ads, plus gives you double the colors in the color bucket, and more awesome pro features!

[Learn more, Memberships starting at \\$2.50/m!](#)

**Follow me
on Twitter!**

@ConvertingColor