

Converting Colors

Android(4292395199)

Have a look what the booklet for
Android(4292395199) contains.

Android(4292395199)	3
<i>Conversions</i>	4
<i>Details</i>	6
<i>Harmonies</i>	11
<i>Previews</i>	23
<i>Color Blindness Simulation</i>	26
<i>CSS Examples</i>	29

Color

Android(4292395199)

Conversions

Conversions Part 1

Format	Color
Hex	D8C0BF
RGB	216, 192, 191
RGB Percent	85%, 75%, 75%
CMY	0.1529, 0.2471, 0.2510
CMYK	0.00, 0.11, 0.12, 0.15
HSL	2°, 24%, 80%
HSV	2°, 12%, 85%
XYZ	56.5725, 56.0598, 57.1291
YIQ	199.0620, 14.6250, 4.7770

Conversions

Conversions Part 2

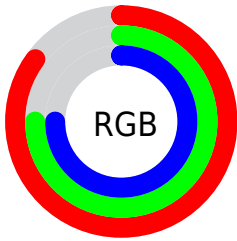
Format	Color
R _Y B	216, 192, 191
Decimal	14205119
CIE Lab	79.65, 8.31, 3.60
CIE LCh	80, 9.061, 23.408
Yxy	56.0598, 0.3332, 0.3302
Android (android.graphics.Color)	4292395199 (0xFFD8C0BF)
YUV	199.0620, -3.9746, 14.8546
Hunter-Lab	74.8731, 3.8429, 7.1721

Details

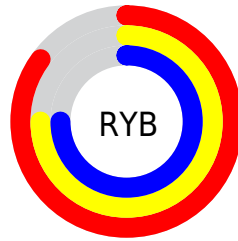
The Android color `4292395199` is a light color, and the websafe version is hex `CCCCCC`. A complement of this color would be `4290762712`, and the grayscale version is `4291282887`.

A 20% lighter version of the original color is `4294965495`, and `4288777098` is the 20% darker color. If you saturate the color by 10%, you get `4292389801`, and if you desaturate by 10%, it is `4292400597`.

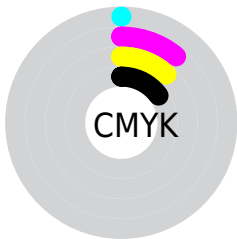
Distribution



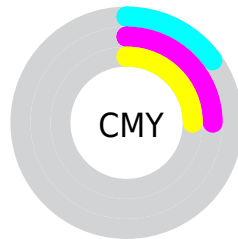
- Red (85%)
- Green (75%)
- Blue (75%)



- Red (85%)
- Yellow (75%)
- Blue (75%)



- Cyan (0%)
- Magenta (11%)
- Yellow (12%)
- Black (15%)



- Cyan (15%)
- Magenta (25%)
- Yellow (25%)

Brightness & Saturation Gradients

These gradients show how the Android color 4292395199 changes by changing the brightness by 10 percent. The first figure shows a shift by +10% for each color and the second figure -10%.

Similar to the brightness gradients but the following saturation gradients show a change of the Android color 4292395199 by changing the saturation by 10% instead.

 4292395199

 4292395199

4294967295

 4290553252

 4294965495

 4288777098

 4287066480

 4285356376

 4283777345

 4282198827

 4280751638

 4279238656

 4278190080

 4292395199

 4292395199

 4292389801

 4292400597

 4292384660

 4292405738

 4292379262

 4292411135

 4292373865

 4292411391

 4292368467

 4292363325

 4292357928

 4292352530

 4292348160

Harmonies

Analogous

The Analogous color harmony consists of three colors that are next to each other on the color wheel.



4292264136



4292395199



4292199096

Triad

The Triadic color harmony groups three colors that are evenly spaced from another and form a triangle on the color wheel.



4292395199



4290496955



4290496470

Complementary

The Complementary color scheme is a pair of colors which are on the opposite of each other on the color wheel.



4292395199



4290762712

Split Complementary

Split-complementary colors differ from the complementary color scheme. The scheme consists of three colors, the original color and two neighbors of the complement color.



4289972691



4292395199



4290038467

Square

The Square scheme is like the rectangle color scheme, but the four colors are evenly spaced on the color wheel.



4292395199



4291151798



4289841868



4291151061

Rectangle

The Rectangle color scheme consists of four colors that form a rectangle on the color wheel.



4292395199



4291937205



4289841868



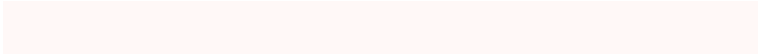
4290300117

Sweetspot

The Sweet Spot groups the original color and five complimentary colors.



4292395199



4294965495



4292394967



4286610298



4278190080



4286611584

Same Dimension

The Same Dimension uses a secret algorithm to generate beautiful new colors.



4292395199



4294958555



4292398271



4285227360



4289398528



4281008640

Inverse Universe

The Inverse Universe completely reimagines the original color for something new.



4290762712



4292607743



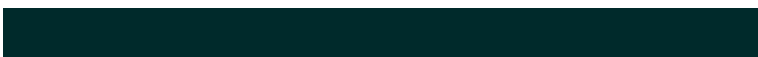
4290759640



4284509035



4278232235



4278200875

Previews

White Background



This preview shows how the Android color 4292395199 looks on a white background.

Color Contrast Check

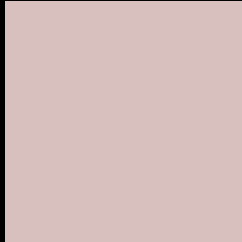
Large Text (above 18pt) WCAG AA × Fail

Any Text WCAG AA × Fail

Large Text (above 18pt) WCAG AAA × Fail

Any Text WCAG AAA × Fail

Black Background



This preview shows how the Android color 4292395199 looks on a black background.

Color Contrast Check

Large Text (above 18pt) WCAG AA ✓ Pass

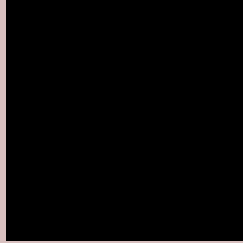
Any Text WCAG AA ✓ Pass

Large Text (above 18pt) WCAG AAA ✓ Pass

Any Text WCAG AAA ✓ Pass

If you want to check with other color combinations, try the [Color Contrast Checker](#).

Android 4292395199 Background



This preview shows how black text looks on a background with the Android color 4292395199.



This preview shows how white text looks on a background with the Android color 4292395199.

Color Blindness Simulation

Color vision deficiency is a very complex topic, and I could not describe the different causes any better than Wikipedia does, so if you want to learn more, you should check out their [article about color blindness](#).


Dichromacy



Original Color
4292395199

Protanopia
4291478978

Deuteranopia
4292591551



Tritanopia
4292525773

Trichromacy



Original Color
4292395199

Protanomaly
4291806145

Deuteranomaly
4292526015

Tritanomaly
4292460488

Monochromacy



Original Color
4292395199

Achromatopsia
4291282887

Achromatomaly
4291675332

CSS Examples

Text

The CSS property to change the color of the text to Android 4292395199 is called "color". The color property can be set on classes, ids or directly on the HTML element.

This example shows how text in the color `rgb(216, 192, 191)` looks like.

```
.text, #text, p{  
    color:rgb(216, 192, 191)  
}
```

If you want to add a text shadow in that color use the text-shadow property, you can generate a text shadow directly with our [CSS Text Shadow Generator](#).

Here you see how black text with a 4 pixel rgb(216, 192, 191) colored shadow looks like.

```
.shadow{ text-shadow: 4px 4px 2px rgb(216, 192, 191) }
```

Border

The CSS property to change the border of an element to Android 4292395199 is called "border". The border property can be set on classes, ids or directly on the HTML element.

This example shows the color as border, it can be applied via the CSS property "border" or "border-color".

```
.border, #border, table{ border:4px solid rgb(216, 192, 191) }
```

If only the border color should be changed use the property `border-color`.

```
.border{ border-color:rgb(216, 192, 191) }
```

If you want to add a box shadow in that color use:

Here you see how a box with a 4 pixel `rgb(216, 192, 191)` colored shadow looks like.

```
.boxshadow{ -moz-box-shadow:4px 4px 4px  
4px rgb(216, 192, 191); -webkit-box-  
shadow:4px 4px 4px 4px rgb(216, 192, 191);  
box-shadow:4px 4px 4px 4px rgb(216, 192,  
191) }
```

Background

The CSS property to change the background color of an element to Android 4292395199 is called "background". The background property can be set on classes, ids or directly on the HTML element.

```
.background, #background, body{  
background: rgb(216, 192, 191) }
```

If only the background color should be changed can be used:

```
.background{ background-color: rgb(216,  
192, 191) }
```

This example shows the color as background, it is applied via the CSS property "background".

To optimize and compress your CSS code, you can use our [online CSS compressor and optimizer](#) based on csstidy. If you want to create a linear or radial gradient as background or border, check our [CSS Gradient Generator](#).

Hey! You found this booklet interesting? Support Converting Colors with the new Membership Option!

The pro membership hides all ads, plus gives you double the colors in the color bucket, and more awesome pro features!

[Learn more, Memberships starting at \\$2.50/m!](#)

**Follow me
on Twitter!**

@ConvertingColor