

Converting Colors

Android(4292395205)

Have a look what the booklet for
Android(4292395205) contains.

Android(4292395205)	3
<i>Conversions</i>	4
<i>Details</i>	6
<i>Harmonies</i>	11
<i>Previews</i>	23
<i>Color Blindness Simulation</i>	26
<i>CSS Examples</i>	29

Color

Android(4292395205)

Conversions

Conversions Part 1

Format	Color
Hex	D8C0C5
RGB	216, 192, 197
RGB Percent	85%, 75%, 77%
CMY	0.1529, 0.2471, 0.2275
CMYK	0.00, 0.11, 0.09, 0.15
HSL	348°, 24%, 80%
HSV	348°, 11%, 85%
XYZ	57.2466, 56.3294, 60.6788
YIQ	199.7460, 12.6990, 6.6430

Conversions

Conversions Part 2

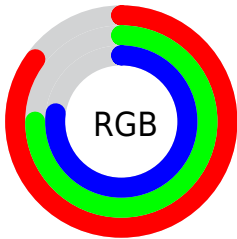
Format	Color
R _Y B	216, 192, 197
Decimal	14205125
CIE Lab	79.80, 9.32, 0.59
CIE LCh	80, 9.338, 3.620
Yxy	56.3294, 0.3285, 0.3233
Android (android.graphics.Color)	4292395205 (0xFFD8C0C5)
YUV	199.7460, -1.3538, 14.2548
Hunter-Lab	75.0529, 4.8082, 4.6023

Details

The Android color `4292395205` is a light color, and the websafe version is hex `CCCCCC`. A complement of this color would be `4290828499`, and the grayscale version is `4291348680`.

A 20% lighter version of the original color is `4294965502`, and `4288777103` is the 20% darker color. If you saturate the color by 10%, you get `4292389556`, and if you desaturate by 10%, it is `4292400854`.

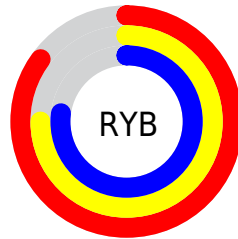
Distribution



Red (85%)

Green (75%)

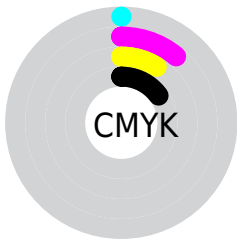
Blue (77%)



Red (85%)

Yellow (75%)

Blue (77%)

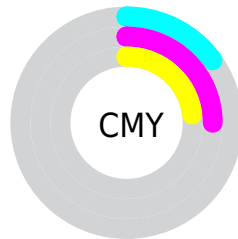


Cyan (0%)

Magenta (11%)

Yellow (9%)

Black (15%)



Cyan (15%)

Magenta (25%)

Yellow (23%)

Brightness & Saturation Gradients

These gradients show how the Android color 4292395205 changes by changing the brightness by 10 percent. The first figure shows a shift by +10% for each color and the second figure -10%.

Similar to the brightness gradients but the following saturation gradients show a change of the Android color 4292395205 by changing the saturation by 10% instead.



4292395205



4292395205

4294967295



4290553258



4294965502



4288777103



4287066486



4285356381



4283777350



4282198831



4280751643



4279435264



4278190080

 4292395205

 4292395205

 4292389556

 4292400854

 4292384163

 4292406247

 4292378514

 4292411384

 4292373121

 4292411391

 4292367471

 4292361822

 4292356429

 4292350780

 4292345901

Harmonies

Analogous

The Analogous color harmony consists of three colors that are next to each other on the color wheel.



4292002254



4292395205



4292460989

Triad

The Triadic color harmony groups three colors that are evenly spaced from another and form a triangle on the color wheel.



4292395205



4290955447



4290103765

Complementary

The Complementary color scheme is a pair of colors which are on the opposite of each other on the color wheel.



4292395205



4290828499

Split Complementary

Split-complementary colors differ from the complementary color scheme. The scheme consists of three colors, the original color and two neighbors of the complement color.



4289842127



4292395205



4290366142

Square

The Square scheme is like the rectangle color scheme, but the four colors are evenly spaced on the color wheel.



4292395205



4291610037



4289907655



4290692823

Rectangle

The Rectangle color scheme consists of four colors that form a rectangle on the color wheel.



4292395205



4292264632



4289907655



4289972947

Sweetspot

The Sweet Spot groups the original color and five complimentary colors.



4292395205



4294965241



4292067544



4286610043



4278190080



4286611584

Same Dimension

The Same Dimension uses a secret algorithm to generate beautiful new colors.



4292395205



4294958821



4292396992



4285227107



4289396772



4281008137

Inverse Universe

The Inverse Universe completely reimagines the original color for something new.



4292395205



4294958821



4290826712



4285227107



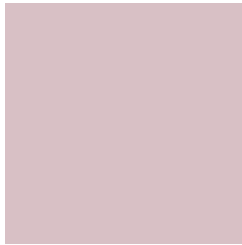
4289396772



4281008137

Previews

White Background



This preview shows how the Android color 4292395205 looks on a white background.

Color Contrast Check

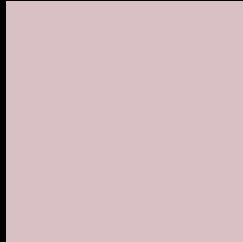
Large Text (above 18pt) WCAG AA × Fail

Any Text WCAG AA × Fail

Large Text (above 18pt) WCAG AAA × Fail

Any Text WCAG AAA × Fail

Black Background



This preview shows how the Android color 4292395205 looks on a black background.

Color Contrast Check

Large Text (above 18pt) WCAG AA ✓ Pass

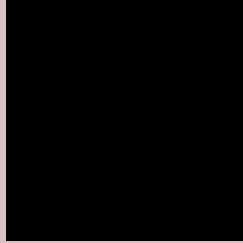
Any Text WCAG AA ✓ Pass

Large Text (above 18pt) WCAG AAA ✓ Pass

Any Text WCAG AAA ✓ Pass

If you want to check with other color combinations, try the [Color Contrast Checker](#).

Android 4292395205 Background



This preview shows how black text looks on a background with the Android color 4292395205.



This preview shows how white text looks on a background with the Android color 4292395205.

Color Blindness Simulation

Color vision deficiency is a very complex topic, and I could not describe the different causes any better than Wikipedia does, so if you want to learn more, you should check out their [article about color blindness](#).


Dichromacy



Original Color
4292395205

Protanopia
4291413448

Deuteranopia
4292460741



Tritanopia
4292460494

Trichromacy



Original Color
4292395205

Protanomaly
4291740615

Deuteranomaly
4292460741

Tritanomaly
4292460491

Monochromacy



Original Color
4292395205

Achromatopsia
4291348680

Achromatomaly
4291741127

CSS Examples

Text

The CSS property to change the color of the text to Android 4292395205 is called "color". The color property can be set on classes, ids or directly on the HTML element.

This example shows how text in the color `rgb(216, 192, 197)` looks like.

```
.text, #text, p{  
    color:rgb(216, 192, 197)  
}
```

If you want to add a text shadow in that color use the text-shadow property, you can generate a text shadow directly with our [CSS Text Shadow Generator](#).

Here you see how black text with a 4 pixel rgb(216, 192, 197) colored shadow looks like.

```
.shadow{ text-shadow: 4px 4px 2px rgb(216, 192, 197) }
```

Border

The CSS property to change the border of an element to Android 4292395205 is called "border". The border property can be set on classes, ids or directly on the HTML element.

This example shows the color as border, it can be applied via the CSS property "border" or "border-color".

```
.border, #border, table{ border:4px solid rgb(216, 192, 197) }
```

If only the border color should be changed use the property `border-color`.

```
.border{ border-color:rgb(216, 192, 197) }
```

If you want to add a box shadow in that color use:

Here you see how a box with a 4 pixel `rgb(216, 192, 197)` colored shadow looks like.

```
.boxshadow{ -moz-box-shadow:4px 4px 4px  
4px rgb(216, 192, 197); -webkit-box-  
shadow:4px 4px 4px 4px rgb(216, 192, 197);  
box-shadow:4px 4px 4px 4px rgb(216, 192,  
197) }
```

Background

The CSS property to change the background color of an element to Android 4292395205 is called "background". The background property can be set on classes, ids or directly on the HTML element.

```
.background, #background, body{  
background: rgb(216, 192, 197) }
```

If only the background color should be changed can be used:

```
.background{ background-color: rgb(216,  
192, 197) }
```

This example shows the color as background, it is applied via the CSS property "background".

To optimize and compress your CSS code, you can use our [online CSS compressor and optimizer](#) based on csstidy. If you want to create a linear or radial gradient as background or border, check our [CSS Gradient Generator](#).

Hey! You found this booklet interesting? Support Converting Colors with the new Membership Option!

The pro membership hides all ads, plus gives you double the colors in the color bucket, and more awesome pro features!

[Learn more, Memberships starting at \\$2.50/m!](#)

**Follow me
on Twitter!**

@ConvertingColor