

# Converting Colors

Android(4292396992)

Have a look what the booklet for  
Android(4292396992) contains.

<b>Android(4292396992)</b> .....	3
<b><i>Conversions</i></b> .....	4
<b><i>Details</i></b> .....	6
<b><i>Harmonies</i></b> .....	11
<b><i>Previews</i></b> .....	23
<b><i>Color Blindness Simulation</i></b> .....	26
<b><i>CSS Examples</i></b> .....	29

# **Color**

**Android(4292396992)**

# Conversions

## Conversions Part 1

<b>Format</b>	<b>Color</b>
Hex	D8C7C0
RGB	216, 199, 192
RGB Percent	85%, 78%, 75%
CMY	0.1529, 0.2196, 0.2471
CMYK	0.00, 0.08, 0.11, 0.15
HSL	18°, 24%, 80%
HSV	18°, 11%, 85%
XYZ	58.2568, 59.2515, 58.2354
YIQ	203.2850, 12.3790, 1.4270

# Conversions

## Conversions Part 2

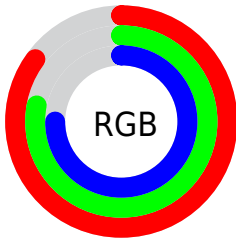
<b>Format</b>	<b>Color</b>
<b>R<sub>YB</sub></b>	216, 202, 192
Decimal	14206912
CIE <sub>Lab</sub>	81.43, 4.77, 5.64
CIE <sub>LCh</sub>	81, 7.383, 49.777
Yxy	59.2515, 0.3315, 0.3371
Android (android.graphics.Color)	4292396992 (0xFFD8C7C0)
YUV	203.2850, -5.5635, 11.1511
Hunter-Lab	76.9750, 0.3873, 9.0267

# Details

The Android color `4292396992` is a light color, and the websafe version is hex `CCCCCC`. A complement of this color would be `4290826712`, and the grayscale version is `4291546059`.

A 20% lighter version of the original color is `4294967288`, and `4288778635` is the 20% darker color. If you saturate the color by 10%, you get `4292393130`, and if you desaturate by 10%, it is `4292400854`.

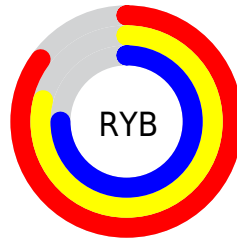
# Distribution



Red (85%)

Green (78%)

Blue (75%)



Red (85%)

Yellow (79%)

Blue (75%)

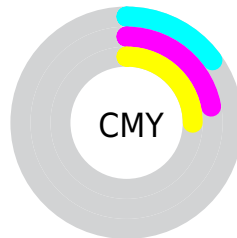


Cyan (0%)

Magenta (8%)

Yellow (11%)

Black (15%)



Cyan (15%)

Magenta (22%)

Yellow (25%)

# Brightness & Saturation Gradients

These gradients show how the Android color 4292396992 changes by changing the brightness by 10 percent. The first figure shows a shift by +10% for each color and the second figure -10%.

Similar to the brightness gradients but the following saturation gradients show a change of the Android color 4292396992 by changing the saturation by 10% instead.





4292396992



4292396992

4294967295



4290555045



4294967288



4288778635



4287068273



4285357913



4283778881



4282265899



4280753175



4279369984



4278190080

 4292396992

 4292396992

 4292393130

 4292400854

 4292389013

 4292404971

 4292385151

 4292408831

 4292381290

 4292411391

 4292377428

 4292373310

 4292369449

 4292365587

 4292361984

# Harmonies

## Analogous

The Analogous color harmony consists of three colors that are next to each other on the color wheel.



4292527814



4292396992



4292069821

# Triad

The Triadic color harmony groups three colors that are evenly spaced from another and form a triangle on the color wheel.



4292396992



4290629320



4291414487

# Complementary

The Complementary color scheme is a pair of colors which are on the opposite of each other on the color wheel.



4292396992



4290826712

# Split Complementary

Split-complementary colors differ from the complementary color scheme. The scheme consists of three colors, the original color and two neighbors of the complement color.



4290890968



4292396992



4290432719

# Square

The Square scheme is like the rectangle color scheme, but the four colors are evenly spaced on the color wheel.



4292396992



4291022273



4290498005



4291938259

# Rectangle

The Rectangle color scheme consists of four colors that form a rectangle on the color wheel.



4292396992



4291742653



4290498005



4291218136



# Sweetspot

The Sweet Spot groups the original color and five complimentary colors.



4292396992



4294966007



4292395217



4286610554



4278190080



4286611584

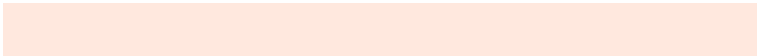


# Same Dimension

The Same Dimension uses a secret algorithm to generate beautiful new colors.



4292396992



4294961374



4292400064



4285228128



4289409536



4281011456

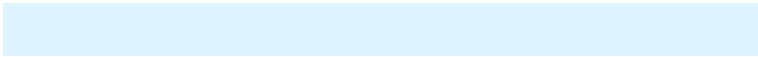


# Inverse Universe

The Inverse Universe completely reimagines the original color for something new.



4290826712



4292802047



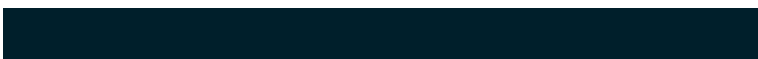
4290823640



4284508267



4278221227



4278198059



# Previews

## White Background



This preview shows how the Android color 4292396992 looks on a white background.

## Color Contrast Check

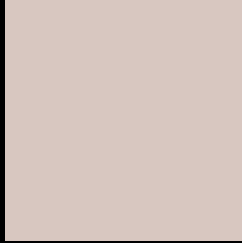
Large Text (above 18pt) WCAG AA × Fail

Any Text WCAG AA × Fail

Large Text (above 18pt) WCAG AAA × Fail

Any Text WCAG AAA × Fail

# Black Background



This preview shows how the Android color 4292396992 looks on a black background.

## Color Contrast Check

Large Text (above 18pt) WCAG AA ✓ Pass

Any Text WCAG AA ✓ Pass

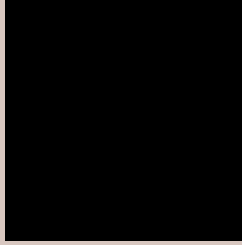
Large Text (above 18pt) WCAG AAA ✓ Pass

Any Text WCAG AAA ✓ Pass

If you want to check with other color combinations, try the [Color Contrast Checker](#).



# Android 4292396992 Background



This preview shows how black text looks on a background with the Android color 4292396992.

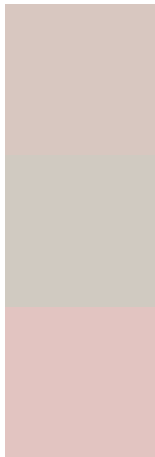


This preview shows how white text looks on a background with the Android color 4292396992.

# Color Blindness Simulation

Color vision deficiency is a very complex topic, and I could not describe the different causes any better than Wikipedia does, so if you want to learn more, you should check out their [article about color blindness](#).


## Dichromacy



**Original Color**  
4292396992

**Protanopia**  
4291873473

**Deuteranopia**  
4293051585



**Tritanopia**  
4292592851

# Trichromacy



**Original Color**  
4292396992

**Protanomaly**  
4292069825

**Deuteranomaly**  
4292789697

**Tritanomaly**  
4292527564

# Monochromacy



**Original Color**  
4292396992

**Achromatopsia**  
4291546059

**Achromatomaly**  
4291873479

# CSS Examples

## Text

The CSS property to change the color of the text to Android 4292396992 is called "color". The color property can be set on classes, ids or directly on the HTML element.

This example shows how text in the color `rgb(216, 199, 192)` looks like.

```
.text, #text, p{  
    color:rgb(216, 199, 192)  
}
```

If you want to add a text shadow in that color use the text-shadow property, you can generate a text shadow directly with our [CSS Text Shadow Generator](#).

Here you see how black text with a 4 pixel rgb(216, 199, 192) colored shadow looks like.

```
.shadow{ text-shadow: 4px 4px 2px rgb(216, 199, 192) }
```

## Border

The CSS property to change the border of an element to Android 4292396992 is called "border". The border property can be set on classes, ids or directly on the HTML element.

This example shows the color as border, it can be applied via the CSS property "border" or "border-color".

```
.border, #border, table{ border:4px solid rgb(216, 199, 192) }
```

If only the border color should be changed use the property `border-color`.

```
.border{ border-color:rgb(216, 199, 192) }
```

If you want to add a box shadow in that color use:

Here you see how a box with a 4 pixel `rgb(216, 199, 192)` colored shadow looks like.

```
.boxshadow{ -moz-box-shadow:4px 4px 4px  
4px rgb(216, 199, 192); -webkit-box-  
shadow:4px 4px 4px 4px rgb(216, 199, 192);  
box-shadow:4px 4px 4px 4px rgb(216, 199,  
192) }
```

# Background

The CSS property to change the background color of an element to Android 4292396992 is called "background". The background property can be set on classes, ids or directly on the HTML element.

```
.background, #background, body{  
background: rgb(216, 199, 192) }
```

If only the background color should be changed can be used:

```
.background{ background-color: rgb(216,  
199, 192) }
```

This example shows the color as background, it is applied via the CSS property "background".

To optimize and compress your CSS code, you can use our [online CSS compressor and optimizer](#) based on csstidy. If you want to create a linear or radial gradient as background or border, check our [CSS Gradient Generator](#).



Hey! You found this booklet interesting? Support Converting Colors with the new Membership Option!

The pro membership hides all ads, plus gives you double the colors in the color bucket, and more awesome pro features!

**[Learn more, Memberships starting at \\$2.50/m!](#)**

**Follow me  
on Twitter!**

@ConvertingColor