

# Converting Colors

Android(4292396999)

Have a look what the booklet for  
Android(4292396999) contains.

<b>Android(4292396999)</b> .....	3
<b><i>Conversions</i></b> .....	4
<b><i>Details</i></b> .....	6
<b><i>Harmonies</i></b> .....	11
<b><i>Previews</i></b> .....	23
<b><i>Color Blindness Simulation</i></b> .....	26
<b><i>CSS Examples</i></b> .....	29

# **Color**

**Android(4292396999)**

# Conversions

## Conversions Part 1

Format	Color
Hex	D8C7C7
RGB	216, 199, 199
RGB Percent	85%, 78%, 78%
CMY	0.1529, 0.2196, 0.2196
CMYK	0.00, 0.08, 0.08, 0.15
HSL	0°, 18%, 81%
HSV	0°, 8%, 85%
XYZ	59.0511, 59.5693, 62.4185
YIQ	204.0830, 10.1320, 3.6040

# Conversions

## Conversions Part 2

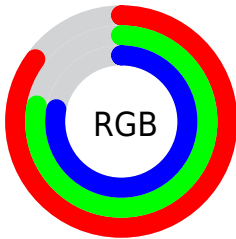
Format	Color
R <sub>Y</sub> B	216, 199, 199
Decimal	14206919
CIE Lab	81.60, 5.94, 2.14
CIE LCh	82, 6.314, 19.806
Yxy	59.5693, 0.3262, 0.3290
Android (android.graphics.Color)	4292396999 (0xFFD8C7C7)
YUV	204.0830, -2.5059, 10.4512
Hunter-Lab	77.1811, 1.5029, 6.0773

# Details

The Android color `4292396999` is a light color, and the websafe version is hex `CCCCCC`. A complement of this color would be `4291287256`, and the grayscale version is `4291611852`.

A 20% lighter version of the original color is `4294967295`, and `4288778641` is the 20% darker color. If you saturate the color by 10%, you get `4292391345`, and if you desaturate by 10%, it is `4292402653`.

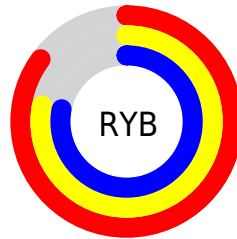
# Distribution



Red (85%)

Green (78%)

Blue (78%)



Red (85%)

Yellow (78%)

Blue (78%)

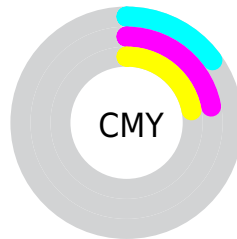


Cyan (0%)

Magenta (8%)

Yellow (8%)

Black (15%)



Cyan (15%)

Magenta (22%)

Yellow (22%)

# Brightness & Saturation Gradients

These gradients show how the Android color 4292396999 changes by changing the brightness by 10 percent. The first figure shows a shift by +10% for each color and the second figure -10%.

Similar to the brightness gradients but the following saturation gradients show a change of the Android color 4292396999 by changing the saturation by 10% instead.



 4292396999

 4292396999

4294967295

 4290555052

 4288778641

 4287068024

 4285357919

 4283778887

 4282265905

 4280818716

 4279501057

 4278190080

 4292396999

 4292396999

 4292391345

 4292402653

 4292385948

 4292408050

 4292380294

 4292411391

 4292374897

 4292369243

 4292363589

 4292358192

 4292352538

 4292347141

# Harmonies

## Analogous

The Analogous color harmony consists of three colors that are next to each other on the color wheel.



4292265933



4292396999



4292331714

# Triad

The Triadic color harmony groups three colors that are evenly spaced from another and form a triangle on the color wheel.



4292396999



4291153347



4291022038

# Complementary

The Complementary color scheme is a pair of colors which are on the opposite of each other on the color wheel.



4292396999



4291287256

# Split Complementary

Split-complementary colors differ from the complementary color scheme. The scheme consists of three colors, the original color and two neighbors of the complement color.



4290694868



4292396999



4290760392

# Square

The Square scheme is like the rectangle color scheme, but the four colors are evenly spaced on the color wheel.



4292396999



4291611840



4290629327



4291480278

# Rectangle

The Rectangle color scheme consists of four colors that form a rectangle on the color wheel.



4292396999



4292135360



4290629327



4290891222



# Sweetspot

The Sweet Spot groups the original color and five complimentary colors.



4292396999



4294966010



4292397016



4286610813



4278190080



4286611584

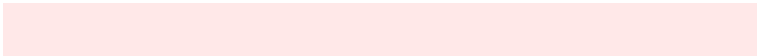


# Same Dimension

The Same Dimension uses a secret algorithm to generate beautiful new colors.



4292396999



4294961384



4292399303



4285227104



4289396736



4281008128

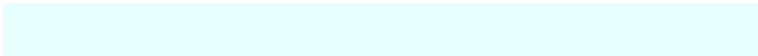


# Inverse Universe

The Inverse Universe completely reimagines the original color for something new.



4291287256



4293459967



4291285208



4284509035



4278234027

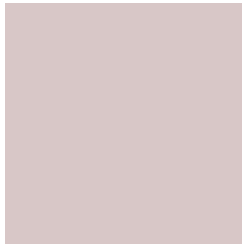


4278201131



# Previews

## White Background



This preview shows how the Android color 4292396999 looks on a white background.

## Color Contrast Check

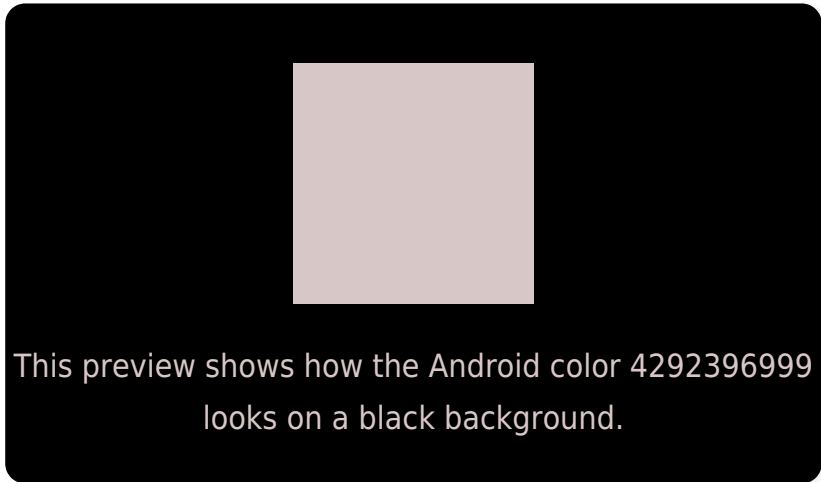
Large Text (above 18pt) WCAG AA × Fail

Any Text WCAG AA × Fail

Large Text (above 18pt) WCAG AAA × Fail

Any Text WCAG AAA × Fail

# Black Background



## Color Contrast Check

Large Text (above 18pt) WCAG AA ✓ Pass

Any Text WCAG AA ✓ Pass

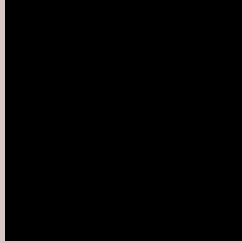
Large Text (above 18pt) WCAG AAA ✓ Pass

Any Text WCAG AAA ✓ Pass

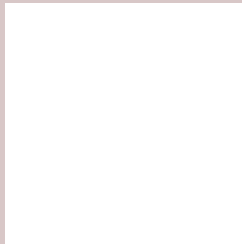
If you want to check with other color combinations, try the [Color Contrast Checker](#).



# Android 4292396999 Background



This preview shows how black text looks on a background with the Android color 4292396999.




This preview shows how white text looks on a background with the Android color 4292396999.

# Color Blindness Simulation

Color vision deficiency is a very complex topic, and I could not describe the different causes any better than Wikipedia does, so if you want to learn more, you should check out their [article about color blindness](#).

## Dichromacy





**Tritanopia**  
4292527572

# Trichromacy



**Original Color**  
4292396999

**Protanomaly**  
4292004296

**Deuteranomaly**  
4292724168

**Tritanomaly**  
4292462287

# Monochromacy



**Original Color**  
4292396999

**Achromatopsia**  
4291611852

**Achromatomaly**  
4291873482

# CSS Examples

## Text

The CSS property to change the color of the text to Android 4292396999 is called "color". The color property can be set on classes, ids or directly on the HTML element.

This example shows how text in the color `rgb(216, 199, 199)` looks like.

```
.text, #text, p{  
    color:rgb(216, 199, 199)  
}
```

If you want to add a text shadow in that color use the text-shadow property, you can generate a text shadow directly with our [CSS Text Shadow Generator](#).

Here you see how black text with a 4 pixel rgb(216, 199, 199) colored shadow looks like.

```
.shadow{ text-shadow: 4px 4px 2px rgb(216, 199, 199) }
```

## Border

The CSS property to change the border of an element to Android 4292396999 is called "border". The border property can be set on classes, ids or directly on the HTML element.

This example shows the color as border, it can be applied via the CSS property "border" or "border-color".

```
.border, #border, table{ border:4px solid rgb(216, 199, 199) }
```

If only the border color should be changed use the property `border-color`.

```
.border{ border-color:rgb(216, 199, 199) }
```

If you want to add a box shadow in that color use:

Here you see how a box with a 4 pixel `rgb(216, 199, 199)` colored shadow looks like.

```
.boxshadow{ -moz-box-shadow:4px 4px 4px  
4px rgb(216, 199, 199); -webkit-box-  
shadow:4px 4px 4px 4px rgb(216, 199, 199);  
box-shadow:4px 4px 4px 4px rgb(216, 199,  
199) }
```

# Background

The CSS property to change the background color of an element to Android 4292396999 is called "background". The background property can be set on classes, ids or directly on the HTML element.

```
.background, #background, body{  
background: rgb(216, 199, 199) }
```

If only the background color should be changed can be used:

```
.background{ background-color: rgb(216,  
199, 199) }
```

This example shows the color as background, it is applied via the CSS property "background".

To optimize and compress your CSS code, you can use our [online CSS compressor and optimizer](#) based on csstidy. If you want to create a linear or radial gradient as background or border, check our [CSS Gradient Generator](#).



Hey! You found this booklet interesting? Support Converting Colors with the new Membership Option!

The pro membership hides all ads, plus gives you double the colors in the color bucket, and more awesome pro features!

**[Learn more, Memberships starting at \\$2.50/m!](#)**

**Follow me  
on Twitter!**

@ConvertingColor