

Converting Colors

Android(4292397514)

Have a look what the booklet for
Android(4292397514) contains.

Android(4292397514)	3
<i>Conversions</i>	4
<i>Details</i>	6
<i>Harmonies</i>	11
<i>Previews</i>	23
<i>Color Blindness Simulation</i>	26
<i>CSS Examples</i>	29

Color

Android(4292397514)

Conversions

Conversions Part 1

Format	Color
Hex	D8C9CA
RGB	216, 201, 202
RGB Percent	85%, 79%, 79%
CMY	0.1529, 0.2118, 0.2078
CMYK	0.00, 0.07, 0.06, 0.15
HSL	356°, 16%, 82%
HSV	356°, 7%, 85%
XYZ	59.8662, 60.6365, 64.4258
YIQ	205.5990, 8.6190, 3.4910

Conversions

Conversions Part 2

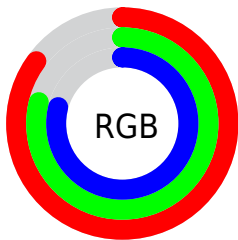
Format	Color
R _Y B	216, 201, 202
Decimal	14207434
CIE Lab	82.18, 5.40, 1.38
CIE LCh	82, 5.569, 14.304
Yxy	60.6365, 0.3237, 0.3279
Android (android.graphics.Color)	4292397514 (0xFFD8C9CA)
YUV	205.5990, -1.7743, 9.1217
Hunter-Lab	77.8694, 0.9597, 5.4546

Details

The Android color `4292397514` is a light color, and the websafe version is hex `CCCCCC`. A complement of this color would be `4291418327`, and the grayscale version is `4291743438`.

A 20% lighter version of the original color is `4294967295`, and `4288779156` is the 20% darker color. If you saturate the color by 10%, you get `4292391862`, and if you desaturate by 10%, it is `4292403166`.

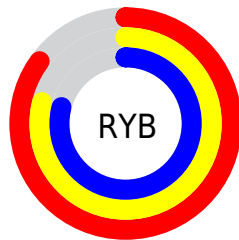
Distribution



Red (85%)

Green (79%)

Blue (79%)



Red (85%)

Yellow (79%)

Blue (79%)

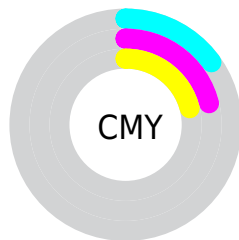


Cyan (0%)

Magenta (7%)

Yellow (6%)

Black (15%)



Cyan (15%)

Magenta (21%)

Yellow (21%)

Brightness & Saturation Gradients

These gradients show how the Android color 4292397514 changes by changing the brightness by 10 percent. The first figure shows a shift by +10% for each color and the second figure -10%.

Similar to the brightness gradients but the following saturation gradients show a change of the Android color 4292397514 by changing the saturation by 10% instead.

 4292397514

 4292397514

4294967295

 4290555567

 4288779156

 4287068538

 4285423969

 4283779402

 4282266163

 4280818974

 4279501829

 4278190080

 4292397514

 4292397514

 4292391862

 4292403166

 4292386466

 4292408562

 4292380814

 4292411391

 4292375417

 4292369765

 4292364113

 4292358717

 4292353065

 4292347669

Harmonies

Analogous

The Analogous color harmony consists of three colors that are next to each other on the color wheel.



4292266447



4292397514



4292332229

Triad

The Triadic color harmony groups three colors that are evenly spaced from another and form a triangle on the color wheel.



4292397514



4291350213



4291088086

Complementary

The Complementary color scheme is a pair of colors which are on the opposite of each other on the color wheel.



4292397514



4291418327

Split Complementary

Split-complementary colors differ from the complementary color scheme. The scheme consists of three colors, the original color and two neighbors of the complement color.



4290891731



4292397514



4291022793

Square

The Square scheme is like the rectangle color scheme, but the four colors are evenly spaced on the color wheel.



4292397514



4291743170



4290826447



4291480790

Rectangle

The Rectangle color scheme consists of four colors that form a rectangle on the color wheel.



4292397514



4292201411



4290826447



4291022550

Sweetspot

The Sweet Spot groups the original color and five complimentary colors.



4292397514



4294966010



4292331992



4286610813



4278190080



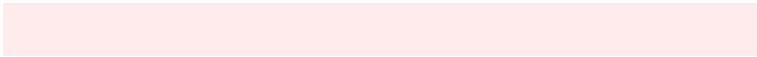
4286611584

Same Dimension

The Same Dimension uses a secret algorithm to generate beautiful new colors.



4292397514



4294962156



4292399305



4285227105



4289396747



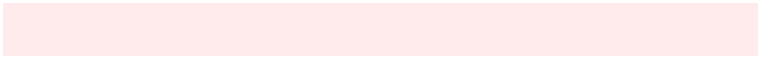
4281008131

Inverse Universe

The Inverse Universe completely reimagines the original color for something new.



4292397514



4294962156



4291416792



4285227105



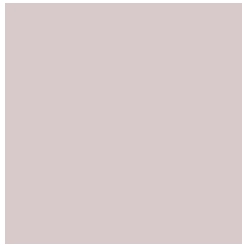
4289396747



4281008131

Previews

White Background



This preview shows how the Android color 4292397514 looks on a white background.

Color Contrast Check

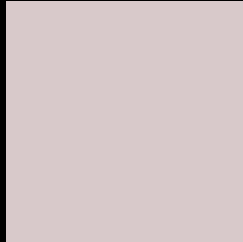
Large Text (above 18pt) WCAG AA × Fail

Any Text WCAG AA × Fail

Large Text (above 18pt) WCAG AAA × Fail

Any Text WCAG AAA × Fail

Black Background



This preview shows how the Android color 4292397514 looks on a black background.

Color Contrast Check

Large Text (above 18pt) WCAG AA ✓ Pass

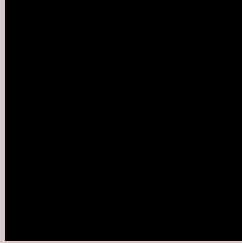
Any Text WCAG AA ✓ Pass

Large Text (above 18pt) WCAG AAA ✓ Pass

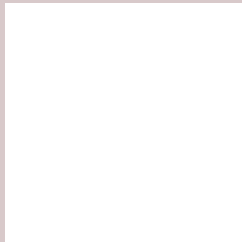
Any Text WCAG AAA ✓ Pass

If you want to check with other color combinations, try the [Color Contrast Checker](#).

Android 4292397514 Background



This preview shows how black text looks on a background with the Android color 4292397514.



This preview shows how white text looks on a background with the Android color 4292397514.

Color Blindness Simulation

Color vision deficiency is a very complex topic, and I could not describe the different causes any better than Wikipedia does, so if you want to learn more, you should check out their [article about color blindness](#).


Dichromacy



Original Color
4292397514

Protanopia
4291873739

Deuteranopia
4292986571



Tritanopia
4292528087

Trichromacy



Original Color
4292397514

Protanomaly
4292070091

Deuteranomaly
4292790219

Tritanomaly
4292462802

Monochromacy



Original Color
4292397514

Achromatopsia
4291743438

Achromatomaly
4292005069

CSS Examples

Text

The CSS property to change the color of the text to Android 4292397514 is called "color". The color property can be set on classes, ids or directly on the HTML element.

This example shows how text in the color `rgb(216, 201, 202)` looks like.

```
.text, #text, p{  
    color:rgb(216, 201, 202)  
}
```

If you want to add a text shadow in that color use the text-shadow property, you can generate a text shadow directly with our [CSS Text Shadow Generator](#).

Here you see how black text with a 4 pixel rgb(216, 201, 202) colored shadow looks like.

```
.shadow{ text-shadow: 4px 4px 2px rgb(216, 201, 202) }
```

Border

The CSS property to change the border of an element to Android 4292397514 is called "border". The border property can be set on classes, ids or directly on the HTML element.

This example shows the color as border, it can be applied via the CSS property "border" or "border-color".

```
.border, #border, table{ border:4px solid rgb(216, 201, 202) }
```

If only the border color should be changed use the property border-color.

```
.border{ border-color:rgb(216, 201, 202) }
```

If you want to add a box shadow in that color use:

Here you see how a box with a 4 pixel rgb(216, 201, 202) colored shadow looks like.

```
.boxshadow{ -moz-box-shadow:4px 4px 4px  
4px rgb(216, 201, 202); -webkit-box-  
shadow:4px 4px 4px 4px rgb(216, 201, 202);  
box-shadow:4px 4px 4px 4px rgb(216, 201,  
202) }
```

Background

The CSS property to change the background color of an element to Android 4292397514 is called "background". The background property can be set on classes, ids or directly on the HTML element.

```
.background, #background, body{  
background: rgb(216, 201, 202) }
```

If only the background color should be changed can be used:

```
.background{ background-color: rgb(216,  
201, 202) }
```

This example shows the color as background, it is applied via the CSS property "background".

To optimize and compress your CSS code, you can use our [online CSS compressor and optimizer](#) based on csstidy. If you want to create a linear or radial gradient as background or border, check our [CSS Gradient Generator](#).

Hey! You found this booklet interesting? Support Converting Colors with the new Membership Option!

The pro membership hides all ads, plus gives you double the colors in the color bucket, and more awesome pro features!

[Learn more, Memberships starting at \\$2.50/m!](#)

**Follow me
on Twitter!**

@ConvertingColor