

Converting Colors

Android(4292423269)

Have a look what the booklet for
Android(4292423269) contains.

Android(4292423269)	3
<i>Conversions</i>	4
<i>Details</i>	6
<i>Harmonies</i>	11
<i>Previews</i>	23
<i>Color Blindness Simulation</i>	26
<i>CSS Examples</i>	29

Color

Android(4292423269)

Conversions

Conversions Part 1

Format	Color
Hex	D92E65
RGB	217, 46, 101
RGB Percent	85%, 18%, 40%
CMY	0.1490, 0.8196, 0.6039
CMYK	0.00, 0.79, 0.53, 0.15
HSL	341°, 69%, 52%
HSV	341°, 79%, 85%
XYZ	31.9412, 17.6453, 14.0343
YIQ	103.3990, 84.2610, 53.3570

Conversions

Conversions Part 2

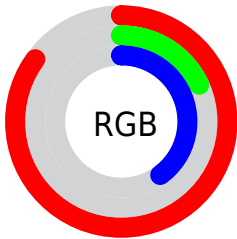
Format	Color
R _{YB}	217, 46, 101
Decimal	14233189
CIE _{Lab}	49.06, 67.18, 11.15
CIE _{LCh}	49, 68.097, 9.424
Yxy	17.6453, 0.5021, 0.2774
Android (android.graphics.Color)	4292423269 (0xFFD92E65)
YUV	103.3990, -1.1827, 99.6281
Hunter-Lab	42.0063, 62.2189, 9.5956

Details

The Android color **4292423269** is a dark color, and the websafe version is hex **CC3366**. The color can be described as dark washed rose. A complement of this color would be **4281260450**, and the grayscale version is **4284966759**.

A 20% lighter version of the original color is **4294929816**, and **4288348215** is the 20% darker color. If you saturate the color by 10%, you get **4292417622**, and if you desaturate by 10%, it is **4292428916**.

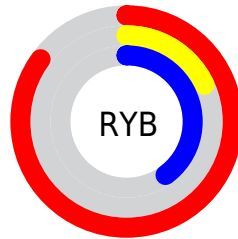
Distribution



Red (85%)

Green (18%)

Blue (40%)



Red (85%)

Yellow (18%)

Blue (40%)

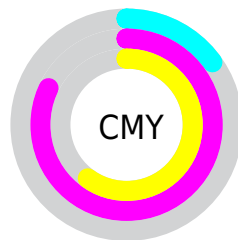


Cyan (0%)

Magenta (79%)

Yellow (53%)

Black (15%)



Cyan (15%)

Magenta (82%)

Yellow (60%)

Brightness & Saturation Gradients

These gradients show how the Android color 4292423269 changes by changing the brightness by 10 percent. The first figure shows a shift by +10% for each color and the second figure -10%.

Similar to the brightness gradients but the following saturation gradients show a change of the Android color 4292423269 by changing the saturation by 10% instead.



4292423269



4292423269

4294967295



4290379853



4294929816



4288348215



4294937266



4286382114



4294944718



4284416012



4294952170



4282580995



4294959871



4280418305



4278190080



4292423269



4292423269



4292417622



4292428916

 4292412232

 4292434306

 4292411462

 4292439953

 4292445600

 4292451247

 4292456637

 4292462284

 4292467931

 4292473321

Harmonies

Analogous

The Analogous color harmony consists of three colors that are next to each other on the color wheel.



4291181726



4292423269



4291708461

Triad

The Triadic color harmony groups three colors that are evenly spaced from another and form a triangle on the color wheel.



4292423269



4282090752



4278224609

Complementary

The Complementary color scheme is a pair of colors which are on the opposite of each other on the color wheel.



4292423269



4281260450

Split Complementary

Split-complementary colors differ from the complementary color scheme. The scheme consists of three colors, the original color and two neighbors of the complement color.



4278226365



4292423269



4278225737

Square

The Square scheme is like the rectangle color scheme, but the four colors are evenly spaced on the color wheel.



4292423269



4286412800



4278226566



4278220520

Rectangle

The Rectangle color scheme consists of four colors that form a rectangle on the color wheel.



4292423269



4290402816



4278226566



4278225368

Sweetspot

The Sweet Spot groups the original color and five complimentary colors.



4292423269



4294951637



4288687833



4286602086



4278190080



4286611584

Same Dimension

The Same Dimension uses a secret algorithm to generate beautiful new colors.



4292423269



4294905179



4292430638



4285424486



4289527864



4281204751

Inverse Universe

The Inverse Universe completely reimagines the original color for something new.



4292423269



4294905179



4281253081



4285424486



4289527864



4281204751

Previews

White Background



This preview shows how the Android color 4292423269 looks on a white background.

Color Contrast Check

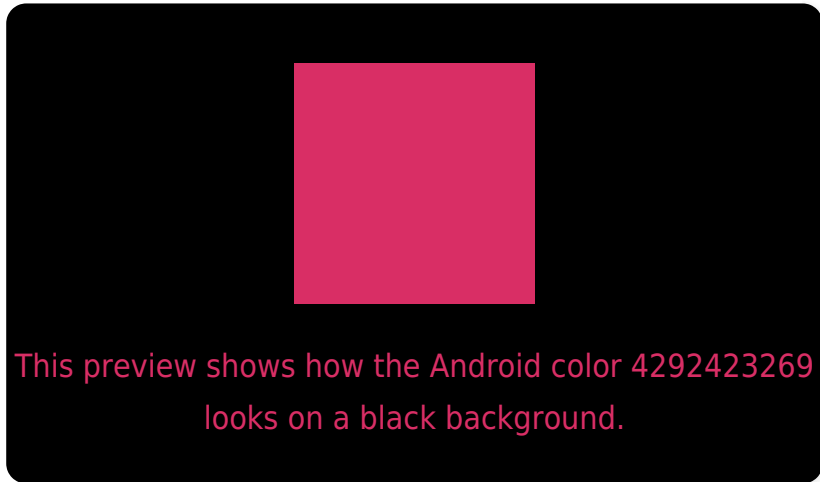
Large Text (above 18pt) WCAG AA ✓ Pass

Any Text WCAG AA ✓ Pass

Large Text (above 18pt) WCAG AAA ✓ Pass

Any Text WCAG AAA × Fail

Black Background



Color Contrast Check

Large Text (above 18pt) WCAG AA ✓ Pass

Any Text WCAG AA ✓ Pass

Large Text (above 18pt) WCAG AAA ✓ Pass

Any Text WCAG AAA × Fail

If you want to check with other color combinations, try the [Color Contrast Checker](#).

Android 4292423269 Background



This preview shows how black text looks on a background with the Android color 4292423269.



This preview shows how white text looks on a background with the Android color 4292423269.

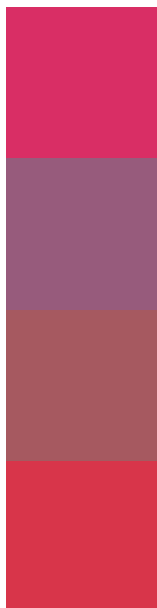
Color Blindness Simulation

Color vision deficiency is a very complex topic, and I could not describe the different causes any better than Wikipedia does, so if you want to learn more, you should check out their [article about color blindness](#).

Dichromacy



Trichromacy



Original Color

4292423269

Protanomaly

4288109436

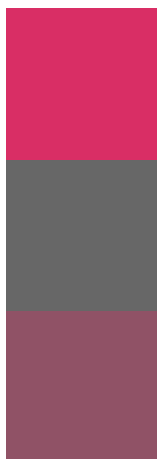
Deuteranomaly

4289091936

Tritanomaly

4292359498

Monochromacy



Original Color

4292423269

Achromatopsia

4284966759

Achromatomaly

4287648358

CSS Examples

Text

The CSS property to change the color of the text to Android 4292423269 is called "color". The color property can be set on classes, ids or directly on the HTML element.

This example shows how text in the color `rgb(217, 46, 101)` looks like.

```
.text, #text, p{  
    color:rgb(217, 46, 101)  
}
```

If you want to add a text shadow in that color use the text-shadow property, you can generate a text shadow directly with our [CSS Text Shadow Generator](#).

Here you see how black text with a 4 pixel rgb(217, 46, 101) colored shadow looks like.

```
.shadow{ text-shadow: 4px 4px 2px rgb(217, 46, 101) }
```

Border

The CSS property to change the border of an element to Android 4292423269 is called "border". The border property can be set on classes, ids or directly on the HTML element.

This example shows the color as border, it can be applied via the CSS property "border" or "border-color".

```
.border, #border, table{ border:4px solid rgb(217, 46, 101) }
```

If only the border color should be changed use the property `border-color`.

```
.border{ border-color:rgb(217, 46, 101) }
```

If you want to add a box shadow in that color use:

Here you see how a box with a 4 pixel `rgb(217, 46, 101)` colored shadow looks like.

```
.boxshadow{ -moz-box-shadow:4px 4px 4px  
4px rgb(217, 46, 101); -webkit-box-  
shadow:4px 4px 4px 4px rgb(217, 46, 101);  
box-shadow:4px 4px 4px 4px rgb(217, 46,  
101) }
```

Background

The CSS property to change the background color of an element to Android 4292423269 is called "background". The background property can be set on classes, ids or directly on the HTML element.

```
.background, #background, body{  
background: rgb(217, 46, 101) }
```

If only the background color should be changed can be used:

```
.background{ background-color: rgb(217, 46,  
101) }
```

This example shows the color as background, it is applied via the CSS property "background".

To optimize and compress your CSS code, you can use our [online CSS compressor and optimizer](#) based on csstidy. If you want to create a linear or radial gradient as background or border, check our [CSS Gradient Generator](#).

Hey! You found this booklet interesting? Support Converting Colors with the new Membership Option!

The pro membership hides all ads, plus gives you double the colors in the color bucket, and more awesome pro features!

[Learn more, Memberships starting at \\$2.50/m!](#)

**Follow me
on Twitter!**

@ConvertingColor