

Converting Colors

Android(4292425834)

Have a look what the booklet for
Android(4292425834) contains.

Android(4292425834)	3
<i>Conversions</i>	4
<i>Details</i>	6
<i>Harmonies</i>	11
<i>Previews</i>	23
<i>Color Blindness Simulation</i>	26
<i>CSS Examples</i>	29

Color

Android(4292425834)

Conversions

Conversions Part 1

Format	Color
Hex	D9386A
RGB	217, 56, 106
RGB Percent	85%, 22%, 42%
CMY	0.1490, 0.7804, 0.5843
CMYK	0.00, 0.74, 0.51, 0.15
HSL	341°, 68%, 54%
HSV	341°, 74%, 85%
XYZ	32.6310, 18.6207, 15.5100
YIQ	109.8390, 79.9060, 49.6820

Conversions

Conversions Part 2

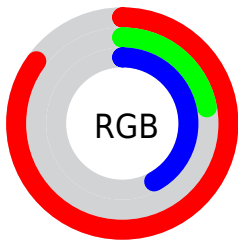
Format	Color
R_{YB}	217, 56, 106
Decimal	14235754
CIE _{Lab}	50.24, 64.59, 9.76
CIE _{LCh}	50, 65.320, 8.590
Yxy	18.6207, 0.4888, 0.2789
Android (android.graphics.Color)	4292425834 (0xFFD9386A)
YUV	109.8390, -1.8926, 93.9802
Hunter-Lab	43.1517, 59.4649, 8.8956

Details

The Android color **4292425834** is a dark color, and the websafe version is hex **CC3366**. The color can be described as dark muted rose. A complement of this color would be **4281915815**, and the grayscale version is **4285427310**.

A 20% lighter version of the original color is **4294931613**, and **4288413755** is the 20% darker color. If you saturate the color by 10%, you get **4292420187**, and if you desaturate by 10%, it is **4292431481**.

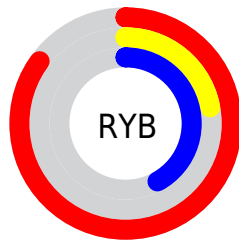
Distribution



Red (85%)

Green (22%)

Blue (42%)



Red (85%)

Yellow (22%)

Blue (42%)

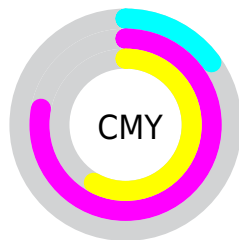


Cyan (0%)

Magenta (74%)

Yellow (51%)

Black (15%)



Cyan (15%)

Magenta (78%)

Yellow (58%)

Brightness & Saturation Gradients

These gradients show how the Android color 4292425834 changes by changing the brightness by 10 percent. The first figure shows a shift by +10% for each color and the second figure -10%.

Similar to the brightness gradients but the following saturation gradients show a change of the Android color 4292425834 by changing the saturation by 10% instead.



4292425834



4292425834

4294967295



4290383442



4294931613



4288413755



4294938808



4286447654



4294946259



4284481554



4294953712



4282712067



4294961407



4280549377



4278190080



4292425834



4292425834



4292420187



4292431481

 4292414796

 4292436872

 4292411459

 4292442519

 4292448166

 4292453557

 4292459204

 4292464851

 4292470498

 4292475889

Harmonies

Analogous

The Analogous color harmony consists of three colors that are next to each other on the color wheel.



4291118241



4292425834



4291775285

Triad

The Triadic color harmony groups three colors that are evenly spaced from another and form a triangle on the color wheel.



4292425834



4282681102



4278225119

Complementary

The Complementary color scheme is a pair of colors which are on the opposite of each other on the color wheel.



4292425834



4281915815

Split Complementary

Split-complementary colors differ from the complementary color scheme. The scheme consists of three colors, the original color and two neighbors of the complement color.



4278226876



4292425834



4278226508

Square

The Square scheme is like the rectangle color scheme, but the four colors are evenly spaced on the color wheel.



4292425834



4286740992



4278227079



4278221286

Rectangle

The Rectangle color scheme consists of four colors that form a rectangle on the color wheel.



4292425834



4290534670



4278227079



4278225878

Sweetspot

The Sweet Spot groups the original color and five complimentary colors.



4292425834



4294952920



4289083609



4286602857



4278190080



4286611584

Same Dimension

The Same Dimension uses a secret algorithm to generate beautiful new colors.



4292425834



4294909027



4292433464



4285424486



4289527862



4281204750

Inverse Universe

The Inverse Universe completely reimagines the original color for something new.



4292425834



4294909027



4281908185



4285424486



4289527862



4281204750

Previews

White Background



This preview shows how the Android color 4292425834 looks on a white background.

Color Contrast Check

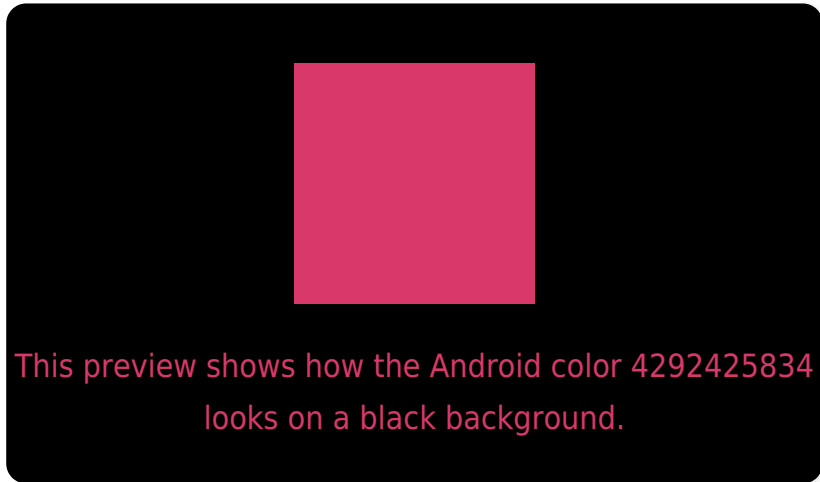
Large Text (above 18pt) WCAG AA ✓ Pass

Any Text WCAG AA ✗ Fail

Large Text (above 18pt) WCAG AAA ✗ Fail

Any Text WCAG AAA ✗ Fail

Black Background



Color Contrast Check

Large Text (above 18pt) WCAG AA ✓ Pass

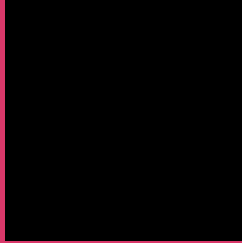
Any Text WCAG AA ✓ Pass

Large Text (above 18pt) WCAG AAA ✓ Pass

Any Text WCAG AAA × Fail

If you want to check with other color combinations, try the [Color Contrast Checker](#).

Android 4292425834 Background



This preview shows how black text looks on a background with the Android color 4292425834.



This preview shows how white text looks on a background with the Android color 4292425834.

Color Blindness Simulation

Color vision deficiency is a very complex topic, and I could not describe the different causes any better than Wikipedia does, so if you want to learn more, you should check out their [article about color blindness](#).

Dichromacy



Original Color

4292425834

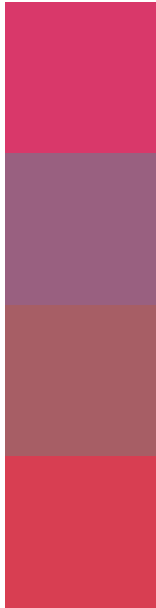
Protanopia

4285822860

Deuteranopia

4287329122

Trichromacy



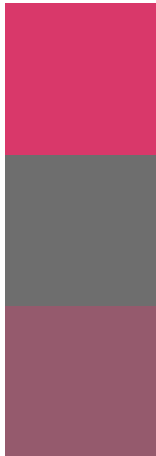
Original Color
4292425834

Protanomaly
4288241792

Deuteranomaly
4289158757

Tritanomaly
4292361810

Monochromacy



Original Color
4292425834

Achromatopsia
4285427310

Achromatomaly
4287978093

CSS Examples

Text

The CSS property to change the color of the text to Android 4292425834 is called "color". The color property can be set on classes, ids or directly on the HTML element.

This example shows how text in the color `rgb(217, 56, 106)` looks like.

```
.text, #text, p{  
    color:rgb(217, 56, 106)  
}
```

If you want to add a text shadow in that color use the text-shadow property, you can generate a text shadow directly with our [CSS Text Shadow Generator](#).

Here you see how black text with a 4 pixel rgb(217, 56, 106) colored shadow looks like.

```
.shadow{ text-shadow: 4px 4px 2px rgb(217, 56, 106) }
```

Border

The CSS property to change the border of an element to Android 4292425834 is called "border". The border property can be set on classes, ids or directly on the HTML element.

This example shows the color as border, it can be applied via the CSS property "border" or "border-color".

```
.border, #border, table{ border:4px solid rgb(217, 56, 106) }
```

If only the border color should be changed use the property `border-color`.

```
.border{ border-color:rgb(217, 56, 106) }
```

If you want to add a box shadow in that color use:

Here you see how a box with a 4 pixel `rgb(217, 56, 106)` colored shadow looks like.

```
.boxshadow{ -moz-box-shadow:4px 4px 4px  
4px rgb(217, 56, 106); -webkit-box-  
shadow:4px 4px 4px 4px rgb(217, 56, 106);  
box-shadow:4px 4px 4px 4px rgb(217, 56,  
106) }
```

Background

The CSS property to change the background color of an element to Android 4292425834 is called "background". The background property can be set on classes, ids or directly on the HTML element.

```
.background, #background, body{  
background: rgb(217, 56, 106) }
```

If only the background color should be changed can be used:

```
.background{ background-color: rgb(217, 56,  
106) }
```

This example shows the color as background, it is applied via the CSS property "background".

To optimize and compress your CSS code, you can use our [online CSS compressor and optimizer](#) based on csstidy. If you want to create a linear or radial gradient as background or border, check our [CSS Gradient Generator](#).

Hey! You found this booklet interesting? Support Converting Colors with the new Membership Option!

The pro membership hides all ads, plus gives you double the colors in the color bucket, and more awesome pro features!

[Learn more, Memberships starting at \\$2.50/m!](#)

**Follow me
on Twitter!**

@ConvertingColor