

Converting Colors

Android(4292429446)

Have a look what the booklet for
Android(4292429446) contains.

Android(4292429446)	3
<i>Conversions</i>	4
<i>Details</i>	6
<i>Harmonies</i>	11
<i>Previews</i>	23
<i>Color Blindness Simulation</i>	26
<i>CSS Examples</i>	29

Color

Android(4292429446)

Conversions

Conversions Part 1

Format	Color
Hex	D94686
RGB	217, 70, 134
RGB Percent	85%, 27%, 53%
CMY	0.1490, 0.7255, 0.4745
CMYK	0.00, 0.68, 0.38, 0.15
HSL	334°, 66%, 56%
HSV	334°, 68%, 85%
XYZ	35.1085, 20.8533, 24.7289
YIQ	121.2490, 67.0680, 51.0680

Conversions

Conversions Part 2

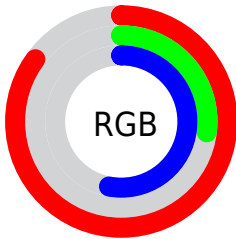
Format	Color
R_{YB}	217, 70, 134
Decimal	14239366
CIE _{Lab}	52.79, 62.25, -3.42
CIE _{LCh}	53, 62.344, 356.853
Yxy	20.8533, 0.4351, 0.2584
Android (android.graphics.Color)	4292429446 (0xFFD94686)
YUV	121.2490, 6.2862, 83.9736
Hunter-Lab	45.6654, 57.3202, -0.1412

Details

The Android color **4292429446** is a dark color, and the websafe version is hex **CC3366**. The color can be described as middle muted rose. A complement of this color would be **4282833305**, and the grayscale version is **4286151033**.

A 20% lighter version of the original color is **4294934459**, and **4288479317** is the 20% darker color. If you saturate the color by 10%, you get **4292423802**, and if you desaturate by 10%, it is **4292435090**.

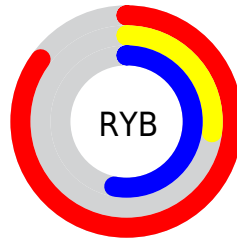
Distribution



Red (85%)

Green (27%)

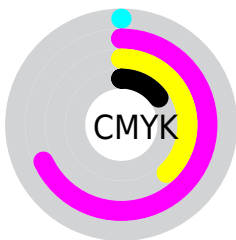
Blue (53%)



Red (85%)

Yellow (27%)

Blue (53%)

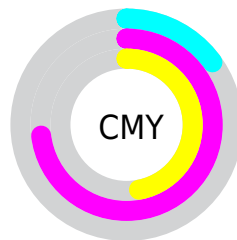


Cyan (0%)

Magenta (68%)

Yellow (38%)

Black (15%)



Cyan (15%)

Magenta (73%)

Yellow (47%)

Brightness & Saturation Gradients

These gradients show how the Android color 4292429446 changes by changing the brightness by 10 percent. The first figure shows a shift by +10% for each color and the second figure -10%.

Similar to the brightness gradients but the following saturation gradients show a change of the Android color 4292429446 by changing the saturation by 10% instead.



4292429446



4292429446

4294967295



4290455149



4294934459



4288479317



4294941911



4286578750



4294949363



4284678184



4294956799



4282908691



4294964223



4281008129



4278190080



4292429446



4292429446



4292423802



4292435090

 4292418413

 4292440479

 4292412769

 4292446123

 4292411486

 4292451767

 4292457411

 4292462800

 4292468444

 4292474088

 4292476916

Harmonies

Analogous

The Analogous color harmony consists of three colors that are next to each other on the color wheel.



4290337209



4292429446



4292562257

Triad

The Triadic color harmony groups three colors that are evenly spaced from another and form a triangle on the color wheel.



4292429446



4285040901



4278227671

Complementary

The Complementary color scheme is a pair of colors which are on the opposite of each other on the color wheel.



4292429446



4282833305

Split Complementary

Split-complementary colors differ from the complementary color scheme. The scheme consists of three colors, the original color and two neighbors of the complement color.



4278228653



4292429446



4278227519

Square

The Square scheme is like the rectangle color scheme, but the four colors are evenly spaced on the color wheel.



4292429446



4288444928



4278228598



4278224618

Rectangle

The Rectangle color scheme consists of four colors that form a rectangle on the color wheel.



4292429446



4291714097



4278228598



4278228171

Sweetspot

The Sweet Spot groups the original color and five complimentary colors.



4292429446



4294954210



4288104153



4286603630



4278190080



4286611584

Same Dimension

The Same Dimension uses a secret algorithm to generate beautiful new colors.



4292429446



4294914186



4292431174



4285424487



4289527883



4281204756

Inverse Universe

The Inverse Universe completely reimagines the original color for something new.



4292429446



4294914186



4282831577



4285424487



4289527883



4281204756

Previews

White Background



This preview shows how the Android color 4292429446 looks on a white background.

Color Contrast Check

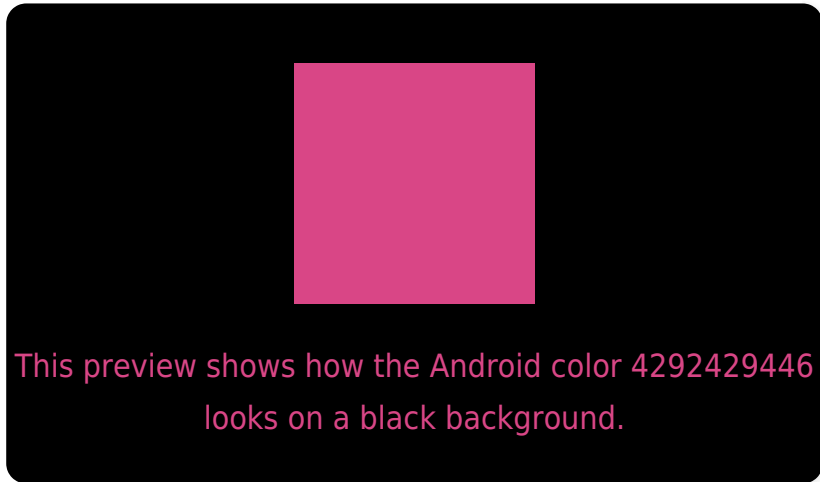
Large Text (above 18pt) WCAG AA ✓ Pass

Any Text WCAG AA ✗ Fail

Large Text (above 18pt) WCAG AAA ✗ Fail

Any Text WCAG AAA ✗ Fail

Black Background



Color Contrast Check

Large Text (above 18pt) WCAG AA ✓ Pass

Any Text WCAG AA ✓ Pass

Large Text (above 18pt) WCAG AAA ✓ Pass

Any Text WCAG AAA × Fail

If you want to check with other color combinations, try the [Color Contrast Checker](#).

Android 4292429446 Background



This preview shows how black text looks on a background with the Android color 4292429446.



This preview shows how white text looks on a background with the Android color 4292429446.

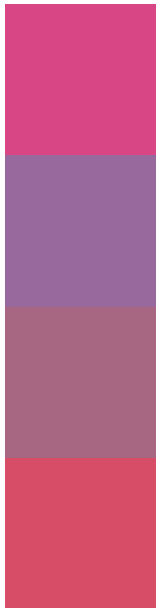
Color Blindness Simulation

Color vision deficiency is a very complex topic, and I could not describe the different causes any better than Wikipedia does, so if you want to learn more, you should check out their [article about color blindness](#).

Dichromacy



Trichromacy



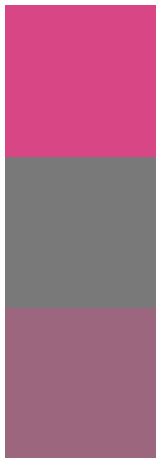
Original Color
4292429446

Protanomaly
4288113052

Deuteranomaly
4289161090

Tritanomaly
4292300135

Monochromacy



Original Color
4292429446

Achromatopsia
4286151033

Achromatomaly
4288439934

CSS Examples

Text

The CSS property to change the color of the text to Android 4292429446 is called "color". The color property can be set on classes, ids or directly on the HTML element.

This example shows how text in the color `rgb(217, 70, 134)` looks like.

```
.text, #text, p{  
    color:rgb(217, 70, 134)  
}
```

If you want to add a text shadow in that color use the text-shadow property, you can generate a text shadow directly with our [CSS Text Shadow Generator](#).

Here you see how black text with a 4 pixel rgb(217, 70, 134) colored shadow looks like.

```
.shadow{ text-shadow: 4px 4px 2px rgb(217, 70, 134) }
```

Border

The CSS property to change the border of an element to Android 4292429446 is called "border". The border property can be set on classes, ids or directly on the HTML element.

This example shows the color as border, it can be applied via the CSS property "border" or "border-color".

```
.border, #border, table{ border:4px solid rgb(217, 70, 134) }
```

If only the border color should be changed use the property border-color.

```
.border{ border-color:rgb(217, 70, 134) }
```

If you want to add a box shadow in that color use:

Here you see how a box with a 4 pixel rgb(217, 70, 134) colored shadow looks like.

```
.boxshadow{ -moz-box-shadow:4px 4px 4px  
4px rgb(217, 70, 134); -webkit-box-  
shadow:4px 4px 4px 4px rgb(217, 70, 134);  
box-shadow:4px 4px 4px 4px rgb(217, 70,  
134) }
```

Background

The CSS property to change the background color of an element to Android 4292429446 is called "background". The background property can be set on classes, ids or directly on the HTML element.

```
.background, #background, body{  
background: rgb(217, 70, 134) }
```

If only the background color should be changed can be used:

```
.background{ background-color: rgb(217, 70,  
134) }
```

This example shows the color as background, it is applied via the CSS property "background".

To optimize and compress your CSS code, you can use our [online CSS compressor and optimizer](#) based on csstidy. If you want to create a linear or radial gradient as background or border, check our [CSS Gradient Generator](#).

Hey! You found this booklet interesting? Support Converting Colors with the new Membership Option!

The pro membership hides all ads, plus gives you double the colors in the color bucket, and more awesome pro features!

[Learn more, Memberships starting at \\$2.50/m!](#)

**Follow me
on Twitter!**

@ConvertingColor