

Converting Colors

Android(4292430466)

Have a look what the booklet for
Android(4292430466) contains.

Android(4292430466)	3
<i>Conversions</i>	4
<i>Details</i>	6
<i>Harmonies</i>	11
<i>Previews</i>	23
<i>Color Blindness Simulation</i>	26
<i>CSS Examples</i>	29

Color

Android(4292430466)

Conversions

Conversions Part 1

Format	Color
Hex	D94A82
RGB	217, 74, 130
RGB Percent	85%, 29%, 51%
CMY	0.1490, 0.7098, 0.4902
CMYK	0.00, 0.66, 0.40, 0.15
HSL	337°, 65%, 57%
HSV	337°, 66%, 85%
XYZ	35.0933, 21.2610, 23.3732
YIQ	123.1410, 67.2520, 47.7320

Conversions

Conversions Part 2

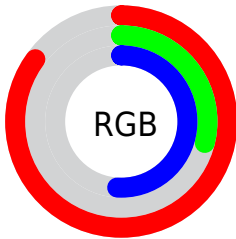
Format	Color
R_{YB}	217, 74, 130
Decimal	14240386
CIE Lab	53.23, 60.28, -0.38
CIE LCh	53, 60.280, 359.636
Yxy	21.2610, 0.4402, 0.2667
Android (android.graphics.Color)	4292430466 (0xFFD94A82)
YUV	123.1410, 3.3815, 82.3143
Hunter-Lab	46.1096, 55.1617, 2.2223

Details

The Android color **4292430466** is a dark color, and the websafe version is hex **CC3366**. The color can be described as middle muted rose. A complement of this color would be **4283095457**, and the grayscale version is **4286282619**.

A 20% lighter version of the original color is **4294935479**, and **4288479313** is the 20% darker color. If you saturate the color by 10%, you get **4292424821**, and if you desaturate by 10%, it is **4292436111**.

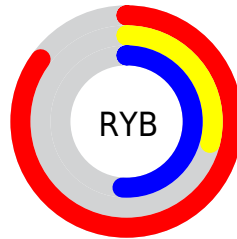
Distribution



Red (85%)

Green (29%)

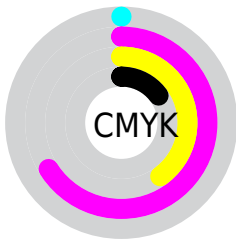
Blue (51%)



Red (85%)

Yellow (29%)

Blue (51%)

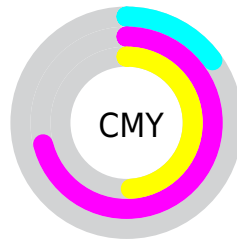


Cyan (0%)

Magenta (66%)

Yellow (40%)

Black (15%)



Cyan (15%)

Magenta (71%)

Yellow (49%)

Brightness & Saturation Gradients

These gradients show how the Android color 4292430466 changes by changing the brightness by 10 percent. The first figure shows a shift by +10% for each color and the second figure -10%.

Similar to the brightness gradients but the following saturation gradients show a change of the Android color 4292430466 by changing the saturation by 10% instead.



4292430466



4292430466

4294967295



4290456425



4294935479



4288479313



4294942674



4286578746



4294950127



4284678181



4294957567



4282908687



4294964991



4281008129



4278190080



4292430466



4292430466



4292424821



4292436111

 4292419432

 4292441500

 4292413786

 4292447146

 4292411477

 4292452791

 4292458180

 4292463825

 4292469470

 4292475116

 4292476921

Harmonies

Analogous

The Analogous color harmony consists of three colors that are next to each other on the color wheel.



4290533812



4292430466



4292366927

Triad

The Triadic color harmony groups three colors that are evenly spaced from another and form a triangle on the color wheel.



4292430466



4284844822



4278227672

Complementary

The Complementary color scheme is a pair of colors which are on the opposite of each other on the color wheel.



4292430466



4283095457

Split Complementary

Split-complementary colors differ from the complementary color scheme. The scheme consists of three colors, the original color and two neighbors of the complement color.



4278228913



4292430466



4278227784

Square

The Square scheme is like the rectangle color scheme, but the four colors are evenly spaced on the color wheel.



4292430466



4288249088



4278228861



4278224615

Rectangle

The Rectangle color scheme consists of four colors that form a rectangle on the color wheel.



4292430466



4291452976



4278228861



4278228173

Sweetspot

The Sweet Spot groups the original color and five complimentary colors.



4292430466



4294954208



4288695001



4286603629



4278190080



4286611584

Same Dimension

The Same Dimension uses a secret algorithm to generate beautiful new colors.



4292430466



4294915716



4292433994



4285424487



4289527876



4281204754

Inverse Universe

The Inverse Universe completely reimagines the original color for something new.



4292430466



4294915716



4283091929



4285424487



4289527876



4281204754

Previews

White Background



This preview shows how the Android color 4292430466 looks on a white background.

Color Contrast Check

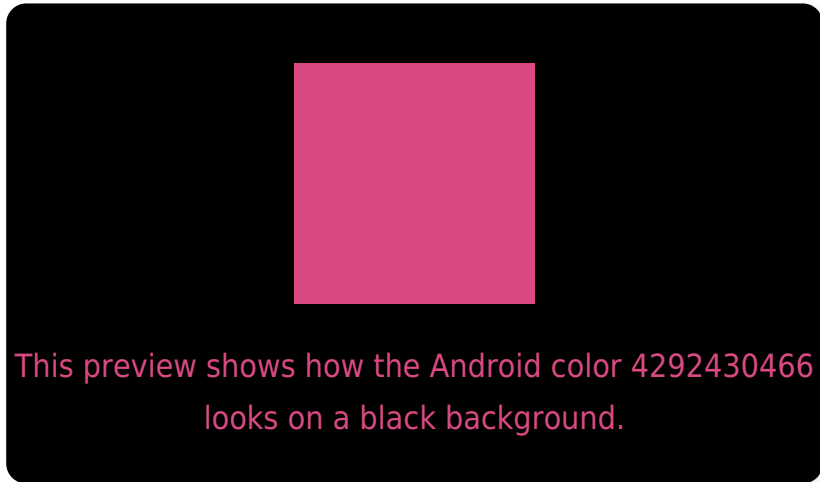
Large Text (above 18pt) WCAG AA ✓ Pass

Any Text WCAG AA ✗ Fail

Large Text (above 18pt) WCAG AAA ✗ Fail

Any Text WCAG AAA ✗ Fail

Black Background



Color Contrast Check

Large Text (above 18pt) WCAG AA ✓ Pass

Any Text WCAG AA ✓ Pass

Large Text (above 18pt) WCAG AAA ✓ Pass

Any Text WCAG AAA × Fail

If you want to check with other color combinations, try the [Color Contrast Checker](#).

Android 4292430466 Background



This preview shows how black text looks on a background with the Android color 4292430466.



This preview shows how white text looks on a background with the Android color 4292430466.

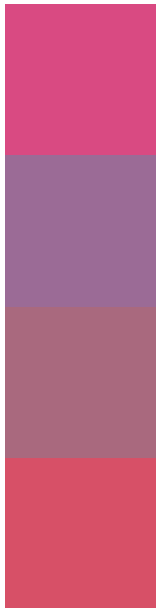
Color Blindness Simulation

Color vision deficiency is a very complex topic, and I could not describe the different causes any better than Wikipedia does, so if you want to learn more, you should check out their [article about color blindness](#).

Dichromacy



Trichromacy



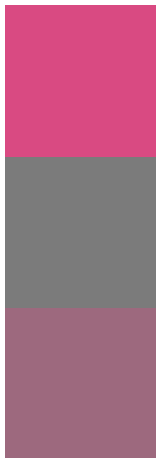
Original Color
4292430466

Protanomaly
4288375702

Deuteranomaly
4289292670

Tritanomaly
4292300903

Monochromacy



Original Color
4292430466

Achromatopsia
4286282619

Achromatomaly
4288506238

CSS Examples

Text

The CSS property to change the color of the text to Android 4292430466 is called "color". The color property can be set on classes, ids or directly on the HTML element.

This example shows how text in the color `rgb(217, 74, 130)` looks like.

```
.text, #text, p{  
    color:rgb(217, 74, 130)  
}
```

If you want to add a text shadow in that color use the text-shadow property, you can generate a text shadow directly with our [CSS Text Shadow Generator](#).

Here you see how black text with a 4 pixel rgb(217, 74, 130) colored shadow looks like.

```
.shadow{ text-shadow: 4px 4px 2px rgb(217, 74, 130) }
```

Border

The CSS property to change the border of an element to Android 4292430466 is called "border". The border property can be set on classes, ids or directly on the HTML element.

This example shows the color as border, it can be applied via the CSS property "border" or "border-color".

```
.border, #border, table{ border:4px solid rgb(217, 74, 130) }
```

If only the border color should be changed use the property `border-color`.

```
.border{ border-color:rgb(217, 74, 130) }
```

If you want to add a box shadow in that color use:

Here you see how a box with a 4 pixel `rgb(217, 74, 130)` colored shadow looks like.

```
.boxshadow{ -moz-box-shadow:4px 4px 4px  
4px rgb(217, 74, 130); -webkit-box-  
shadow:4px 4px 4px 4px rgb(217, 74, 130);  
box-shadow:4px 4px 4px 4px rgb(217, 74,  
130) }
```

Background

The CSS property to change the background color of an element to Android 4292430466 is called "background". The background property can be set on classes, ids or directly on the HTML element.

```
.background, #background, body{  
background: rgb(217, 74, 130) }
```

If only the background color should be changed can be used:

```
.background{ background-color: rgb(217, 74,  
130) }
```

This example shows the color as background, it is applied via the CSS property "background".

To optimize and compress your CSS code, you can use our [online CSS compressor and optimizer](#) based on csstidy. If you want to create a linear or radial gradient as background or border, check our [CSS Gradient Generator](#).

Hey! You found this booklet interesting? Support Converting Colors with the new Membership Option!

The pro membership hides all ads, plus gives you double the colors in the color bucket, and more awesome pro features!

[Learn more, Memberships starting at \\$2.50/m!](#)

**Follow me
on Twitter!**

@ConvertingColor