

Converting Colors

Android(4292432245)

Have a look what the booklet for
Android(4292432245) contains.

Android(4292432245)	3
<i>Conversions</i>	4
<i>Details</i>	6
<i>Harmonies</i>	11
<i>Previews</i>	23
<i>Color Blindness Simulation</i>	26
<i>CSS Examples</i>	29

Color

Android(4292432245)

Conversions

Conversions Part 1

Format	Color
Hex	D95175
RGB	217, 81, 117
RGB Percent	85%, 32%, 46%
CMY	0.1490, 0.6824, 0.5412
CMYK	0.00, 0.63, 0.46, 0.15
HSL	344°, 64%, 58%
HSV	344°, 63%, 85%
XYZ	34.7686, 21.9209, 19.2283
YIQ	125.7680, 69.5000, 40.0280

Conversions

Conversions Part 2

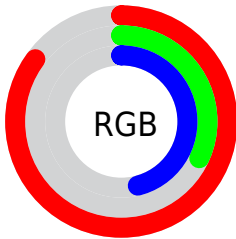
Format	Color
R_{YB}	217, 81, 117
Decimal	14242165
CIE _{Lab}	53.94, 56.11, 8.38
CIE _{LCh}	54, 56.735, 8.497
Yxy	21.9209, 0.4580, 0.2887
Android (android.graphics.Color)	4292432245 (0xFFD95175)
YUV	125.7680, -4.3226, 80.0105
Hunter-Lab	46.8198, 50.6203, 8.4242

Details

The Android color **4292432245** is a dark color, and the websafe version is hex **CC3366**. The color can be described as middle muted rose. A complement of this color would be **4283554229**, and the grayscale version is **4286479998**.

A 20% lighter version of the original color is **4294937001**, and **4288483397** is the 20% darker color. If you saturate the color by 10%, you get **4292426597**, and if you desaturate by 10%, it is **4292437893**.

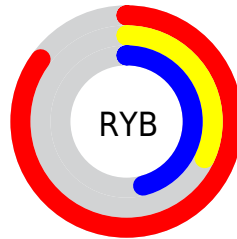
Distribution



Red (85%)

Green (32%)

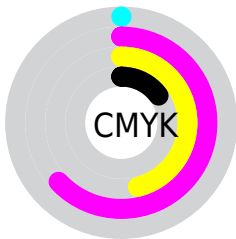
Blue (46%)



Red (85%)

Yellow (32%)

Blue (46%)

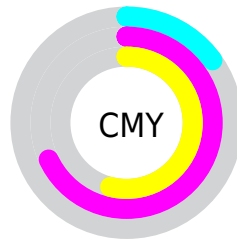


Cyan (0%)

Magenta (63%)

Yellow (46%)

Black (15%)



Cyan (15%)

Magenta (68%)

Yellow (54%)

Brightness & Saturation Gradients

These gradients show how the Android color 4292432245 changes by changing the brightness by 10 percent. The first figure shows a shift by +10% for each color and the second figure -10%.

Similar to the brightness gradients but the following saturation gradients show a change of the Android color 4292432245 by changing the saturation by 10% instead.



4292432245



4292432245

4294967295



4290458716



4294937001



4288483397



4294944196



4286578735



4294951392



4284678171



4294958845



4282908673



4294966527



4281008129



4278190080



4292432245



4292432245



4292426597



4292437893

 4292421205

 4292443285

 4292415557

 4292448933

 4292411449

 4292454581

 4292459973

 4292465621

 4292471269

 4292476917

 4292476927

Harmonies

Analogous

The Analogous color harmony consists of three colors that are next to each other on the color wheel.



4291189158



4292432245



4291910982

Triad

The Triadic color harmony groups three colors that are evenly spaced from another and form a triangle on the color wheel.



4292432245



4283993902



4278227164

Complementary

The Complementary color scheme is a pair of colors which are on the opposite of each other on the color wheel.



4292432245



4283554229

Split Complementary

Split-complementary colors differ from the complementary color scheme. The scheme consists of three colors, the original color and two neighbors of the complement color.



4278228925



4292432245



4278228571

Square

The Square scheme is like the rectangle color scheme, but the four colors are evenly spaced on the color wheel.



4292432245



4287464206



4278229134



4280910562

Rectangle

The Rectangle color scheme consists of four colors that form a rectangle on the color wheel.



4292432245



4290865964



4278229134



4278227924

Sweetspot

The Sweet Spot groups the original color and five complimentary colors.



4292432245



4294954971



4290073049



4286603882



4278190080



4286611584

Same Dimension

The Same Dimension uses a secret algorithm to generate beautiful new colors.



4292432245



4294918258



4292440401



4285424486



4289527854



4281204748

Inverse Universe

The Inverse Universe completely reimagines the original color for something new.



4292432245



4294918258



4283546073



4285424486



4289527854



4281204748

Previews

White Background



This preview shows how the Android color 4292432245 looks on a white background.

Color Contrast Check

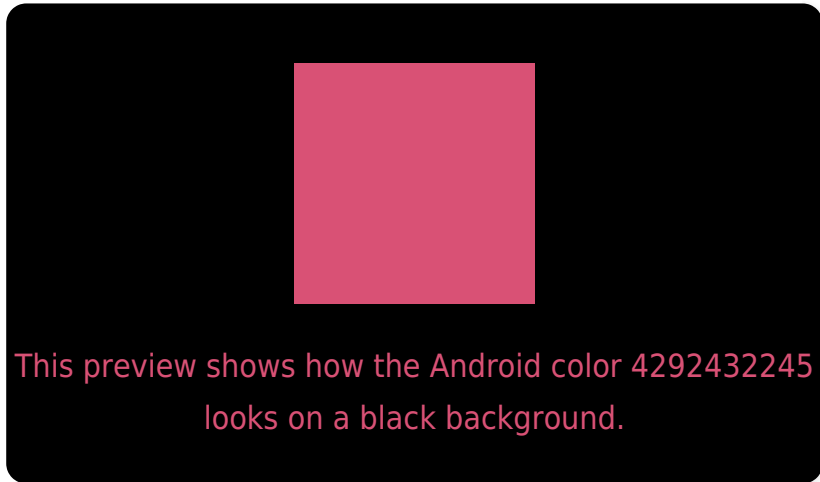
Large Text (above 18pt) WCAG AA ✓ Pass

Any Text WCAG AA ✗ Fail

Large Text (above 18pt) WCAG AAA ✗ Fail

Any Text WCAG AAA ✗ Fail

Black Background



Color Contrast Check

Large Text (above 18pt) WCAG AA ✓ Pass

Any Text WCAG AA ✓ Pass

Large Text (above 18pt) WCAG AAA ✓ Pass

Any Text WCAG AAA × Fail

If you want to check with other color combinations, try the [Color Contrast Checker](#).

Android 4292432245 Background



This preview shows how black text looks on a background with the Android color 4292432245.



This preview shows how white text looks on a background with the Android color 4292432245.

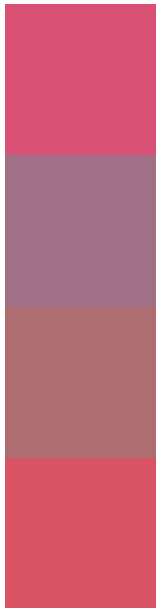
Color Blindness Simulation

Color vision deficiency is a very complex topic, and I could not describe the different causes any better than Wikipedia does, so if you want to learn more, you should check out their [article about color blindness](#).

Dichromacy



Trichromacy



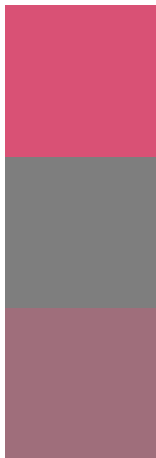
Original Color
4292432245

Protanomaly
4288704646

Deuteranomaly
4289621361

Tritanomaly
4292367460

Monochromacy



Original Color
4292432245

Achromatopsia
4286479998

Achromatomaly
4288638587

CSS Examples

Text

The CSS property to change the color of the text to Android 4292432245 is called "color". The color property can be set on classes, ids or directly on the HTML element.

This example shows how text in the color `rgb(217, 81, 117)` looks like.

```
.text, #text, p{  
    color:rgb(217, 81, 117)  
}
```

If you want to add a text shadow in that color use the text-shadow property, you can generate a text shadow directly with our [CSS Text Shadow Generator](#).

Here you see how black text with a 4 pixel rgb(217, 81, 117) colored shadow looks like.

```
.shadow{ text-shadow: 4px 4px 2px rgb(217, 81, 117) }
```

Border

The CSS property to change the border of an element to Android 4292432245 is called "border". The border property can be set on classes, ids or directly on the HTML element.

This example shows the color as border, it can be applied via the CSS property "border" or "border-color".

```
.border, #border, table{ border:4px solid rgb(217, 81, 117) }
```

If only the border color should be changed use the property `border-color`.

```
.border{ border-color:rgb(217, 81, 117) }
```

If you want to add a box shadow in that color use:

Here you see how a box with a 4 pixel `rgb(217, 81, 117)` colored shadow looks like.

```
.boxshadow{ -moz-box-shadow:4px 4px 4px  
4px rgb(217, 81, 117); -webkit-box-  
shadow:4px 4px 4px 4px rgb(217, 81, 117);  
box-shadow:4px 4px 4px 4px rgb(217, 81,  
117) }
```

Background

The CSS property to change the background color of an element to Android 4292432245 is called "background". The background property can be set on classes, ids or directly on the HTML element.

```
.background, #background, body{  
background: rgb(217, 81, 117) }
```

If only the background color should be changed can be used:

```
.background{ background-color: rgb(217, 81,  
117) }
```

This example shows the color as background, it is applied via the CSS property "background".

To optimize and compress your CSS code, you can use our [online CSS compressor and optimizer](#) based on csstidy. If you want to create a linear or radial gradient as background or border, check our [CSS Gradient Generator](#).

Hey! You found this booklet interesting? Support Converting Colors with the new Membership Option!

The pro membership hides all ads, plus gives you double the colors in the color bucket, and more awesome pro features!

[Learn more, Memberships starting at \\$2.50/m!](#)

**Follow me
on Twitter!**

@ConvertingColor