

# Converting Colors

Android(4292444812)

Have a look what the booklet for  
Android(4292444812) contains.

<b>Android(4292444812)</b> .....	3
<b><i>Conversions</i></b> .....	4
<b><i>Details</i></b> .....	6
<b><i>Harmonies</i></b> .....	11
<b><i>Previews</i></b> .....	23
<b><i>Color Blindness Simulation</i></b> .....	26
<b><i>CSS Examples</i></b> .....	29

# **Color**

**Android(4292444812)**

# Conversions

## Conversions Part 1

Format	Color
Hex	D9828C
RGB	217, 130, 140
RGB Percent	85%, 51%, 55%
CMY	0.1490, 0.4902, 0.4510
CMYK	0.00, 0.40, 0.35, 0.15
HSL	353°, 53%, 68%
HSV	353°, 40%, 85%
XYZ	41.3315, 32.6104, 28.9270
YIQ	157.1530, 48.6420, 21.5540

# Conversions

## Conversions Part 2

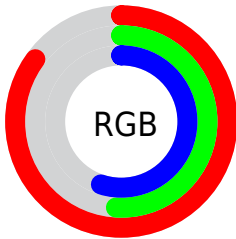
<b>Format</b>	<b>Color</b>
<a href="#">RYB</a>	<a href="#">217, 130, 140</a>
Decimal	<a href="#">14254732</a>
CIELab	<a href="#">63.84, 34.65, 9.09</a>
CIELCh	<a href="#">64, 35.823, 14.701</a>
Yxy	<a href="#">32.6104, 0.4018, 0.3170</a>
Android (android.graphics.Color)	<a href="#">4292444812 (0xFFD9828C)</a>
YUV	<a href="#">157.1530, -8.4564, 52.4858</a>
Hunter-Lab	<a href="#">57.1055, 29.2590, 9.9404</a>

# Details

The Android color `4292444812` is a light color, and the websafe version is hex `FF9999`. A complement of this color would be `4286765519`, and the grayscale version is `4288519581`.

A 20% lighter version of the original color is `4294949057`, and `4288696154` is the 20% darker color. If you saturate the color by 10%, you get `4292439161`, and if you desaturate by 10%, it is `4292450463`.

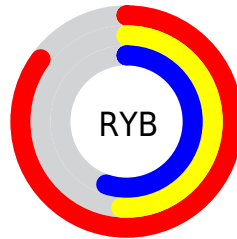
# Distribution



Red (85%)

Green (51%)

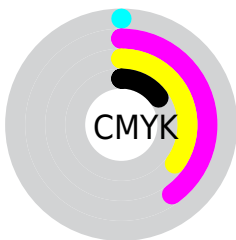
Blue (55%)



Red (85%)

Yellow (51%)

Blue (55%)

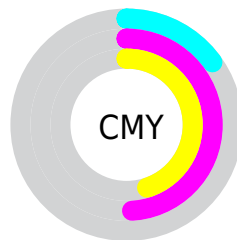


Cyan (0%)

Magenta (40%)

Yellow (35%)

Black (15%)



Cyan (15%)

Magenta (49%)

Yellow (45%)

# Brightness & Saturation Gradients

These gradients show how the Android color 4292444812 changes by changing the brightness by 10 percent. The first figure shows a shift by +10% for each color and the second figure -10%.

Similar to the brightness gradients but the following saturation gradients show a change of the Android color 4292444812 by changing the saturation by 10% instead.





4292444812



4292444812

4294967295



4290537587



4294949057



4288696154



4294956253



4286854723



4294963706



4285078829



4283302168



4281663488



4279435264



4278190080



4292444812



4292444812

 4292439161

 4292450463

 4292433766

 4292455858

 4292428114

 4292461510

 4292422463

 4292467161

 4292417068

 4292472556

 4292411417

 4292476927

# Harmonies

## Analogous

The Analogous color harmony consists of three colors that are next to each other on the color wheel.



4291789996



4292444812



4291987567

# Triad

The Triadic color harmony groups three colors that are evenly spaced from another and form a triangle on the color wheel.



4292444812



4286359148



4283343832

# Complementary

The Complementary color scheme is a pair of colors which are on the opposite of each other on the color wheel.



4292444812



4286765519

# Split Complementary

Split-complementary colors differ from the complementary color scheme. The scheme consists of three colors, the original color and two neighbors of the complement color.



4278888903



4292444812



4283673481

# Square

The Square scheme is like the rectangle color scheme, but the four colors are evenly spaced on the color wheel.



4292444812



4288716380



4280331434



4287011032

# Rectangle

The Rectangle color scheme consists of four colors that form a rectangle on the color wheel.



4292444812



4291202914



4280331434



4281968084



# Sweetspot

The Sweet Spot groups the original color and five complimentary colors.



4292444812



4294959332



4291789529



4286606960



4278190080



4286611584



# Same Dimension

The Same Dimension uses a secret algorithm to generate beautiful new colors.



4292444812



4294935955



4292453250



4285424484



4289527828



4281204741



# Inverse Universe

The Inverse Universe completely reimagines the original color for something new.



4292444812



4294935955



4286757081



4285424484



4289527828



4281204741



# Previews

## White Background



This preview shows how the Android color 4292444812 looks on a white background.

## Color Contrast Check

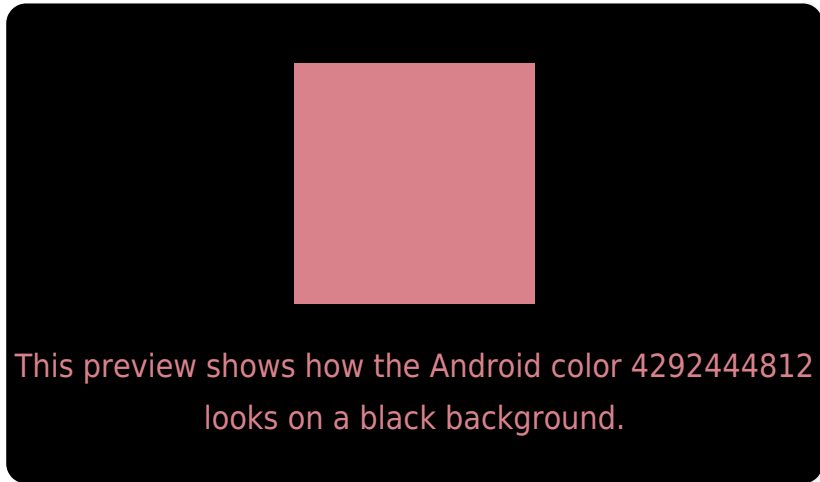
Large Text (above 18pt) WCAG AA × Fail

Any Text WCAG AA × Fail

Large Text (above 18pt) WCAG AAA × Fail

Any Text WCAG AAA × Fail

# Black Background



## Color Contrast Check

Large Text (above 18pt) WCAG AA ✓ Pass

Any Text WCAG AA ✓ Pass

Large Text (above 18pt) WCAG AAA ✓ Pass

Any Text WCAG AAA ✓ Pass

If you want to check with other color combinations, try the [Color Contrast Checker](#).



# Android 4292444812 Background



This preview shows how black text looks on a background with the Android color 4292444812.



This preview shows how white text looks on a background with the Android color 4292444812.

# Color Blindness Simulation

Color vision deficiency is a very complex topic, and I could not describe the different causes any better than Wikipedia does, so if you want to learn more, you should check out their [article about color blindness](#).

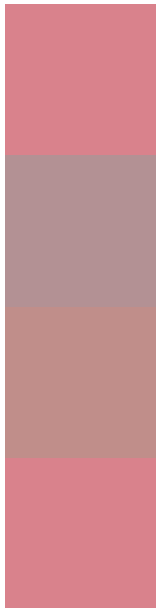
## Dichromacy





**Tritanopia**  
4292444812

# Trichromacy



**Original Color**  
4292444812

**Protanomaly**  
4289958292

**Deuteranomaly**  
4290809482

**Tritanomaly**  
4292444812

# Monochromacy



**Original Color**  
4292444812

**Achromatopsia**  
4288519581

**Achromatomaly**  
4289958807

# CSS Examples

## Text

The CSS property to change the color of the text to Android 4292444812 is called "color". The color property can be set on classes, ids or directly on the HTML element.

This example shows how text in the color `rgb(217, 130, 140)` looks like.

```
.text, #text, p{  
    color:rgb(217, 130, 140)  
}
```

If you want to add a text shadow in that color use the text-shadow property, you can generate a text shadow directly with our [CSS Text Shadow Generator](#).

Here you see how black text with a 4 pixel rgb(217, 130, 140) colored shadow looks like.

```
.shadow{ text-shadow: 4px 4px 2px rgb(217, 130, 140) }
```

## Border

The CSS property to change the border of an element to Android 4292444812 is called "border". The border property can be set on classes, ids or directly on the HTML element.

This example shows the color as border, it can be applied via the CSS property "border" or "border-color".

```
.border, #border, table{ border:4px solid rgb(217, 130, 140) }
```

If only the border color should be changed use the property border-color.

```
.border{ border-color:rgb(217, 130, 140) }
```

If you want to add a box shadow in that color use:

Here you see how a box with a 4 pixel rgb(217, 130, 140) colored shadow looks like.

```
.boxshadow{ -moz-box-shadow:4px 4px 4px  
4px rgb(217, 130, 140); -webkit-box-  
shadow:4px 4px 4px 4px rgb(217, 130, 140);  
box-shadow:4px 4px 4px 4px rgb(217, 130,  
140) }
```

# Background

The CSS property to change the background color of an element to Android 4292444812 is called "background". The background property can be set on classes, ids or directly on the HTML element.

```
.background, #background, body{  
background: rgb(217, 130, 140) }
```

If only the background color should be changed can be used:

```
.background{ background-color: rgb(217,  
130, 140) }
```

This example shows the color as background, it is applied via the CSS property "background".

To optimize and compress your CSS code, you can use our [online CSS compressor and optimizer](#) based on csstidy. If you want to create a linear or radial gradient as background or border, check our [CSS Gradient Generator](#).



Hey! You found this booklet interesting? Support Converting Colors with the new Membership Option!

The pro membership hides all ads, plus gives you double the colors in the color bucket, and more awesome pro features!

**[Learn more, Memberships starting at \\$2.50/m!](#)**

**Follow me  
on Twitter!**

@ConvertingColor