

# Converting Colors

Android(4292445845)

Have a look what the booklet for  
Android(4292445845) contains.

<b>Android(4292445845)</b> .....	3
<i><b>Conversions</b></i> .....	4
<i><b>Details</b></i> .....	6
<i><b>Harmonies</b></i> .....	11
<i><b>Previews</b></i> .....	23
<i><b>Color Blindness Simulation</b></i> .....	26
<i><b>CSS Examples</b></i> .....	29

# **Color**

**Android(4292445845)**

# Conversions

## Conversions Part 1

Format	Color
Hex	D98695
RGB	217, 134, 149
RGB Percent	85%, 53%, 58%
CMY	0.1490, 0.4745, 0.4157
CMYK	0.00, 0.38, 0.31, 0.15
HSL	349°, 52%, 69%
HSV	349°, 38%, 85%
XYZ	42.5652, 33.9718, 32.7476
YIQ	160.5270, 44.6530, 22.2610

# Conversions

## Conversions Part 2

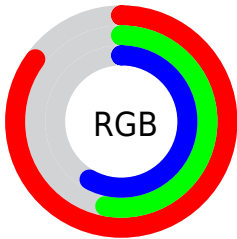
Format	Color
R <sub>Y</sub> B	217, 134, 149
Decimal	14255765
CIE Lab	64.94, 33.66, 5.55
CIE LCh	65, 34.113, 9.368
Yxy	33.9718, 0.3895, 0.3109
Android (android.graphics.Color)	4292445845 (0xFFD98695)
YUV	160.5270, -5.6828, 49.5268
Hunter-Lab	58.2854, 28.3573, 7.4877

# Details

The Android color `4292445845` is a light color, and the websafe version is hex `FF9999`, and the color name is `shimmering blush`. A complement of this color would be `4287027658`, and the grayscale version is `4288782753`.

A 20% lighter version of the original color is `4294950091`, and `4288697186` is the 20% darker color. If you saturate the color by 10%, you get `4292440195`, and if you desaturate by 10%, it is `4292451495`.

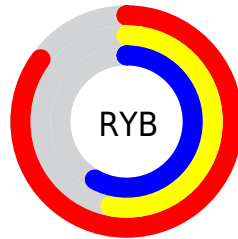
# Distribution



Red (85%)

Green (53%)

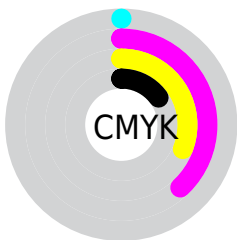
Blue (58%)



Red (85%)

Yellow (53%)

Blue (58%)

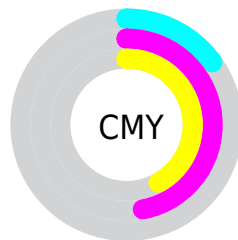


Cyan (0%)

Magenta (38%)

Yellow (31%)

Black (15%)



Cyan (15%)

Magenta (47%)

Yellow (42%)

# Brightness & Saturation Gradients

These gradients show how the Android color 4292445845 changes by changing the brightness by 10 percent. The first figure shows a shift by +10% for each color and the second figure -10%.

Similar to the brightness gradients but the following saturation gradients show a change of the Android color 4292445845 by changing the saturation by 10% instead.



 4292445845

 4292445845

4294967295

 4290538619

 4294950091

 4288697186

 4294957287

 4286855755

 4294964735

 4285080116

 4283368991

 4281729030

 4279762945

 4278190080

 4292445845

 4292445845

 4292440195

 4292451495

 4292434801

 4292456889

 4292429152

 4292462538

 4292423502

 4292468188

 4292418108

 4292473838

 4292412458

 4292476927

 4292411431

# Harmonies

## Analogous

The Analogous color harmony consists of three colors that are next to each other on the color wheel.



4291594676



4292445845



4292184952

# Triad

The Triadic color harmony groups three colors that are evenly spaced from another and form a triangle on the color wheel.



4292445845



4287080301



4283410390

# Complementary

The Complementary color scheme is a pair of colors which are on the opposite of each other on the color wheel.



4292445845



4287027658

# Split Complementary

Split-complementary colors differ from the complementary color scheme. The scheme consists of three colors, the original color and two neighbors of the complement color.



4280790211



4292445845



4284656775

# Square

The Square scheme is like the rectangle color scheme, but the four colors are evenly spaced on the color wheel.



4292445845



4289306465



4282035878



4286750169

# Rectangle

The Rectangle color scheme consists of four colors that form a rectangle on the color wheel.



4292445845



4291531114



4282035878



4282296785



# Sweetspot

The Sweet Spot groups the original color and five complimentary colors.



4292445845



4294960104



4291462873



4286607218



4278190080



4286611584



# Same Dimension

The Same Dimension uses a secret algorithm to generate beautiful new colors.



4292445845



4294937247



4292452486



4285424485



4289527839



4281204744



# Inverse Universe

The Inverse Universe completely reimagines the original color for something new.



4292445845



4294937247



4287021017



4285424485



4289527839

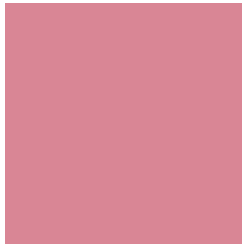


4281204744



# Previews

## White Background



This preview shows how the Android color 4292445845 looks on a white background.

## Color Contrast Check

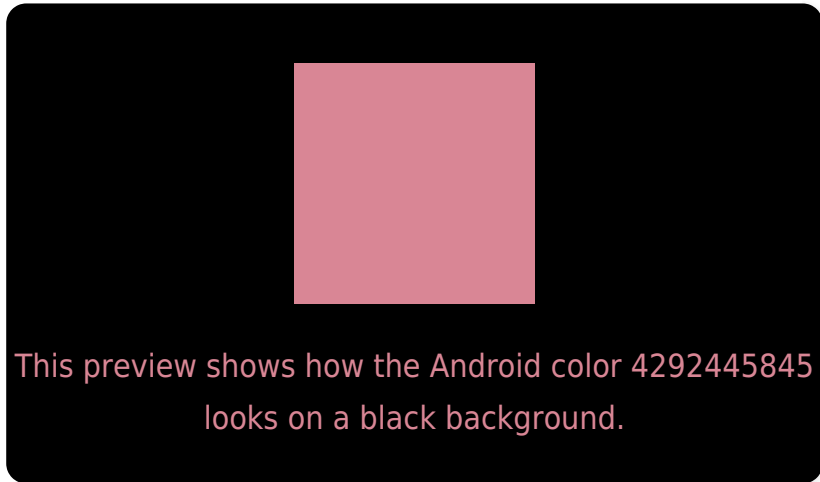
Large Text (above 18pt) WCAG AA × Fail

Any Text WCAG AA × Fail

Large Text (above 18pt) WCAG AAA × Fail

Any Text WCAG AAA × Fail

# Black Background



## Color Contrast Check

Large Text (above 18pt) WCAG AA ✓ Pass

Any Text WCAG AA ✓ Pass

Large Text (above 18pt) WCAG AAA ✓ Pass

Any Text WCAG AAA ✓ Pass

If you want to check with other color combinations, try the [Color Contrast Checker](#).



# Android 4292445845 Background



This preview shows how black text looks on a background with the Android color 4292445845.



This preview shows how white text looks on a background with the Android color 4292445845.

# Color Blindness Simulation

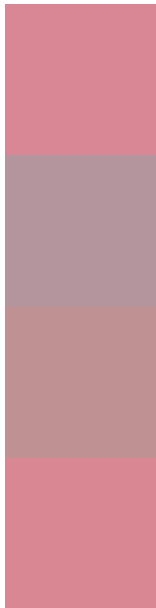
Color vision deficiency is a very complex topic, and I could not describe the different causes any better than Wikipedia does, so if you want to learn more, you should check out their [article about color blindness](#).

## Dichromacy





# Trichromacy



**Original Color**  
4292445845

**Protanomaly**  
4290090397

**Deuteranomaly**  
4290810259

**Tritanomaly**  
4292446098

# Monochromacy



**Original Color**  
4292445845

**Achromatopsia**  
4288782753

**Achromatomaly**  
4290090909

# CSS Examples

## Text

The CSS property to change the color of the text to Android 4292445845 is called "color". The color property can be set on classes, ids or directly on the HTML element.

This example shows how text in the color `rgb(217, 134, 149)` looks like.

```
.text, #text, p{  
    color:rgb(217, 134, 149)  
}
```

If you want to add a text shadow in that color use the text-shadow property, you can generate a text shadow directly with our [CSS Text Shadow Generator](#).

Here you see how black text with a 4 pixel rgb(217, 134, 149) colored shadow looks like.

```
.shadow{ text-shadow: 4px 4px 2px rgb(217, 134, 149) }
```

## Border

The CSS property to change the border of an element to Android 4292445845 is called "border". The border property can be set on classes, ids or directly on the HTML element.

This example shows the color as border, it can be applied via the CSS property "border" or "border-color".

```
.border, #border, table{ border:4px solid rgb(217, 134, 149) }
```

If only the border color should be changed use the property `border-color`.

```
.border{ border-color:rgb(217, 134, 149) }
```

If you want to add a box shadow in that color use:

Here you see how a box with a 4 pixel `rgb(217, 134, 149)` colored shadow looks like.

```
.boxshadow{ -moz-box-shadow:4px 4px 4px  
4px rgb(217, 134, 149); -webkit-box-  
shadow:4px 4px 4px 4px rgb(217, 134, 149);  
box-shadow:4px 4px 4px 4px rgb(217, 134,  
149) }
```

# Background

The CSS property to change the background color of an element to Android 4292445845 is called "background". The background property can be set on classes, ids or directly on the HTML element.

```
.background, #background, body{  
background: rgb(217, 134, 149) }
```

If only the background color should be changed can be used:

```
.background{ background-color: rgb(217,  
134, 149) }
```

This example shows the color as background, it is applied via the CSS property "background".

To optimize and compress your CSS code, you can use our [online CSS compressor and optimizer](#) based on csstidy. If you want to create a linear or radial gradient as background or border, check our [CSS Gradient Generator](#).



Hey! You found this booklet interesting? Support Converting Colors with the new Membership Option!

The pro membership hides all ads, plus gives you double the colors in the color bucket, and more awesome pro features!

**[Learn more, Memberships starting at \\$2.50/m!](#)**

**Follow me  
on Twitter!**

@ConvertingColor