

# Converting Colors

Android(4292446434)

Have a look what the booklet for  
Android(4292446434) contains.

<b>Android(4292446434)</b> .....	3
<i><b>Conversions</b></i> .....	4
<i><b>Details</b></i> .....	6
<i><b>Harmonies</b></i> .....	11
<i><b>Previews</b></i> .....	23
<i><b>Color Blindness Simulation</b></i> .....	26
<i><b>CSS Examples</b></i> .....	29

# **Color**

**Android(4292446434)**

# Conversions

## Conversions Part 1

Format	Color
Hex	D988E2
RGB	217, 136, 226
RGB Percent	85%, 53%, 89%
CMY	0.1490, 0.4667, 0.1137
CMYK	0.04, 0.40, 0.00, 0.11
HSL	294°, 61%, 71%
HSV	294°, 40%, 89%
XYZ	51.1469, 37.8510, 76.5617
YIQ	170.4790, 19.3860, 45.1620

# Conversions

## Conversions Part 2

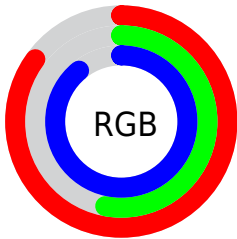
Format	Color
R <sub>Y</sub> B	217, 136, 226
Decimal	14256354
CIE Lab	67.91, 45.01, -33.17
CIE LCh	68, 55.911, 323.606
Yxy	37.8510, 0.3089, 0.2286
Android (android.graphics.Color)	4292446434 (0xFFD988E2)
YUV	170.4790, 27.3719, 40.7989
Hunter-Lab	61.5232, 40.7292, -30.7165

# Details

The Android color `4292446434` is a light color, and the websafe version is hex `FF99FF`. A complement of this color would be `4287750792`, and the grayscale version is `4289374890`.

A 20% lighter version of the original color is `4294950911`, and `4288763050` is the 20% darker color. If you saturate the color by 10%, you get `4292309474`, and if you desaturate by 10%, it is `4292583394`.

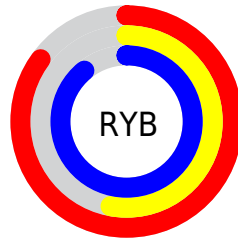
# Distribution



Red (85%)

Green (53%)

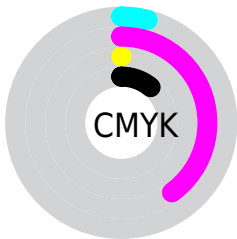
Blue (89%)



Red (85%)

Yellow (53%)

Blue (89%)

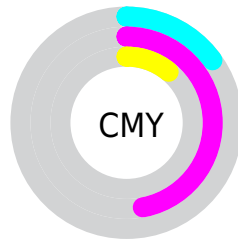


Cyan (4%)

Magenta (40%)

Yellow (0%)

Black (11%)



Cyan (15%)

Magenta (47%)

Yellow (11%)

# Brightness & Saturation Gradients

These gradients show how the Android color 4292446434 changes by changing the brightness by 10 percent. The first figure shows a shift by +10% for each color and the second figure -10%.

Similar to the brightness gradients but the following saturation gradients show a change of the Android color 4292446434 by changing the saturation by 10% instead.



 4292446434

 4292446434

4294967295

 4290539206

 4294950911

 4288763050

 4294958079

 4286921360

 4294965503

 4285210742

 4283498589

 4281794629

 4280418350

 4278190360

 4278190080

 4292446434

 4292446434

 4292309474

 4292583394

 4292107234

 4292785634

 4291970274

 4292922594

 4291833570

 4293059298

 4291696610

 4293196258

 4291494114

 4293394402

 4293525474

 4293656546

 4293787618

# Harmonies

## Analogous

The Analogous color harmony consists of three colors that are next to each other on the color wheel.



4288060927



4292446434



4294736562

# Triad

The Triadic color harmony groups three colors that are evenly spaced from another and form a triangle on the color wheel.



4292446434



4291534652



4278238924

# Complementary

The Complementary color scheme is a pair of colors which are on the opposite of each other on the color wheel.



4292446434



4287750792

# Split Complementary

Split-complementary colors differ from the complementary color scheme. The scheme consists of three colors, the original color and two neighbors of the complement color.



4278238873



4292446434



4288327491

# Square

The Square scheme is like the rectangle color scheme, but the four colors are evenly spaced on the color wheel.



4292446434



4293954645



4284266855



4278237686

# Rectangle

The Rectangle color scheme consists of four colors that form a rectangle on the color wheel.



4292446434



4294932880



4284266855



4278239164



# Sweetspot

The Sweet Spot groups the original color and five complimentary colors.



4292446434



4294762751



4287140322



4286475904



4278190080



4286611584



# Same Dimension

The Same Dimension uses a secret algorithm to generate beautiful new colors.



4292446434



4294149631



4293036222



4285490544



4288544944



4281073712



# Inverse Universe

The Inverse Universe completely reimagines the original color for something new.



4293036177



4294935953



4287161004



4285556070



4289724434



4281335813



# Previews

## White Background



This preview shows how the Android color 4292446434 looks on a white background.

## Color Contrast Check

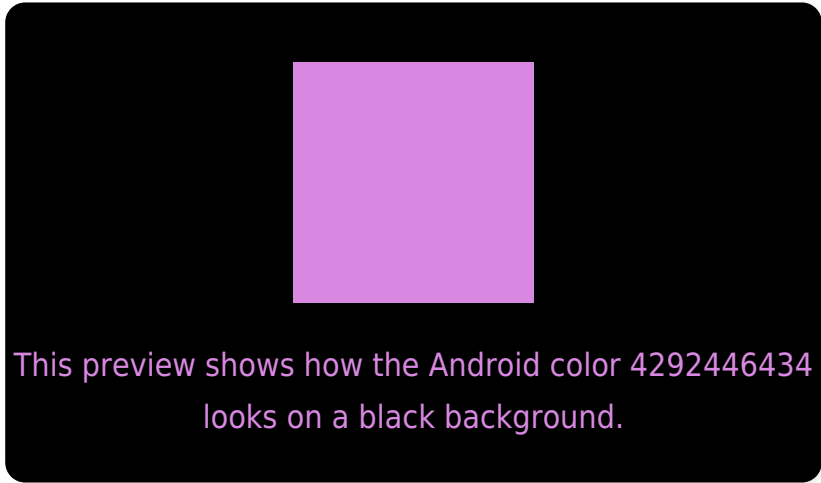
Large Text (above 18pt) WCAG AA × Fail

Any Text WCAG AA × Fail

Large Text (above 18pt) WCAG AAA × Fail

Any Text WCAG AAA × Fail

# Black Background



## Color Contrast Check

Large Text (above 18pt) WCAG AA ✓ Pass

Any Text WCAG AA ✓ Pass

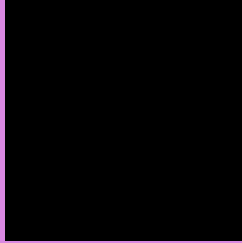
Large Text (above 18pt) WCAG AAA ✓ Pass

Any Text WCAG AAA ✓ Pass

If you want to check with other color combinations, try the [Color Contrast Checker](#).



# Android 4292446434 Background



This preview shows how black text looks on a background with the Android color 4292446434.



This preview shows how white text looks on a background with the Android color 4292446434.

# Color Blindness Simulation

Color vision deficiency is a very complex topic, and I could not describe the different causes any better than Wikipedia does, so if you want to learn more, you should check out their [article about color blindness](#).


## Dichromacy



**Original Color**  
4292446434

**Protanopia**  
4287210488

**Deuteranopia**  
4288127965



**Tritanopia**  
4291860129

# Trichromacy



**Original Color**

4292446434



**Protanomaly**

4289108464



**Deuteranomaly**

4289698271



**Tritanomaly**

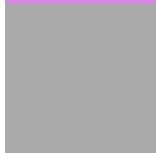
4292055481

# Monochromacy



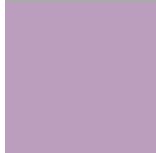
**Original Color**

4292446434



**Achromatopsia**

4289374890



**Achromatomaly**

4290485950

# CSS Examples

## Text

The CSS property to change the color of the text to Android 4292446434 is called "color". The color property can be set on classes, ids or directly on the HTML element.

This example shows how text in the color `rgb(217, 136, 226)` looks like.

```
.text, #text, p{  
    color:rgb(217, 136, 226)  
}
```

If you want to add a text shadow in that color use the text-shadow property, you can generate a text shadow directly with our [CSS Text Shadow Generator](#).

Here you see how black text with a 4 pixel rgb(217, 136, 226) colored shadow looks like.

```
.shadow{ text-shadow: 4px 4px 2px rgb(217, 136, 226) }
```

## Border

The CSS property to change the border of an element to Android 4292446434 is called "border". The border property can be set on classes, ids or directly on the HTML element.

This example shows the color as border, it can be applied via the CSS property "border" or "border-color".

```
.border, #border, table{ border:4px solid rgb(217, 136, 226) }
```

If only the border color should be changed use the property `border-color`.

```
.border{ border-color:rgb(217, 136, 226) }
```

If you want to add a box shadow in that color use:

Here you see how a box with a 4 pixel `rgb(217, 136, 226)` colored shadow looks like.

```
.boxshadow{ -moz-box-shadow:4px 4px 4px  
4px rgb(217, 136, 226); -webkit-box-  
shadow:4px 4px 4px 4px rgb(217, 136, 226);  
box-shadow:4px 4px 4px 4px rgb(217, 136,  
226) }
```

# Background

The CSS property to change the background color of an element to Android 4292446434 is called "background". The background property can be set on classes, ids or directly on the HTML element.

```
.background, #background, body{  
background: rgb(217, 136, 226) }
```

If only the background color should be changed can be used:

```
.background{ background-color: rgb(217,  
136, 226) }
```

This example shows the color as background, it is applied via the CSS property "background".

To optimize and compress your CSS code, you can use our [online CSS compressor and optimizer](#) based on csstidy. If you want to create a linear or radial gradient as background or border, check our [CSS Gradient Generator](#).



Hey! You found this booklet interesting? Support Converting Colors with the new Membership Option!

The pro membership hides all ads, plus gives you double the colors in the color bucket, and more awesome pro features!

**[Learn more, Memberships starting at \\$2.50/m!](#)**

**Follow me  
on Twitter!**

@ConvertingColor