

Converting Colors

Android(4292453040)

Have a look what the booklet for
Android(4292453040) contains.

Android(4292453040)	3
<i>Conversions</i>	4
<i>Details</i>	6
<i>Harmonies</i>	11
<i>Previews</i>	23
<i>Color Blindness Simulation</i>	26
<i>CSS Examples</i>	29

Color

Android(4292453040)

Conversions

Conversions Part 1

Format	Color
Hex	D9A2B0
RGB	217, 162, 176
RGB Percent	85%, 64%, 69%
CMY	0.1490, 0.3647, 0.3098
CMYK	0.00, 0.25, 0.19, 0.15
HSL	345°, 42%, 74%
HSV	345°, 25%, 85%
XYZ	49.3721, 43.7270, 46.9123
YIQ	180.0410, 28.2860, 16.0140

Conversions

Conversions Part 2

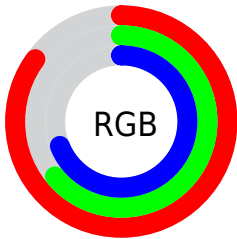
Format	Color
R _Y B	217, 162, 176
Decimal	14262960
CIE Lab	72.05, 22.42, 0.75
CIE LCh	72, 22.436, 1.907
Yxy	43.7270, 0.3526, 0.3123
Android (android.graphics.Color)	4292453040 (0xFFD9A2B0)
YUV	180.0410, -1.9922, 32.4130
Hunter-Lab	66.1264, 17.5527, 4.2262

Details

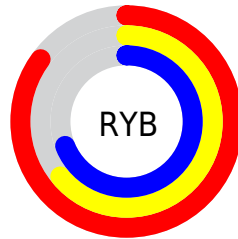
The Android color `4292453040` is a light color, and the websafe version is hex `CC9999`. A complement of this color would be `4288862667`, and the grayscale version is `4290032820`.

A 20% lighter version of the original color is `4294957544`, and `4288769660` is the 20% darker color. If you saturate the color by 10%, you get `4292447392`, and if you desaturate by 10%, it is `4292458688`.

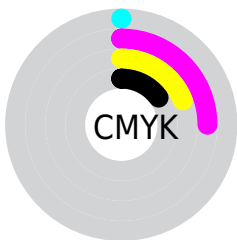
Distribution



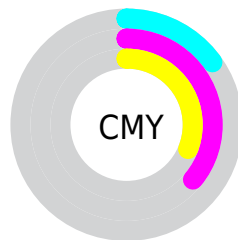
- Red (85%)
- Green (64%)
- Blue (69%)



- Red (85%)
- Yellow (64%)
- Blue (69%)



- Cyan (0%)
- Magenta (25%)
- Yellow (19%)
- Black (15%)



- Cyan (15%)
- Magenta (36%)
- Yellow (31%)

Brightness & Saturation Gradients

These gradients show how the Android color 4292453040 changes by changing the brightness by 10 percent. The first figure shows a shift by +10% for each color and the second figure -10%.

Similar to the brightness gradients but the following saturation gradients show a change of the Android color 4292453040 by changing the saturation by 10% instead.

 4292453040

 4292453040

4294967295

 4290611349

 4294957544

 4288769660

 4294964991

 4286993763

 4285283659

 4283639604

 4282061087

 4280745991

 4278190080

 4292453040

 4292453040

 4292447392

 4292458688

 4292442000

 4292464080

 4292436351

 4292469729

 4292430703

 4292475377

 4292425055

 4292476927

 4292419663

 4292414015

 4292411447

Harmonies

Analogous

The Analogous color harmony consists of three colors that are next to each other on the color wheel.



4291601860



4292453040



4292519068

Triad

The Triadic color harmony groups three colors that are evenly spaced from another and form a triangle on the color wheel.



4292453040



4289246862



4286757076

Complementary

The Complementary color scheme is a pair of colors which are on the opposite of each other on the color wheel.



4292453040



4288862667

Split Complementary

Split-complementary colors differ from the complementary color scheme. The scheme consists of three colors, the original color and two neighbors of the complement color.



4286037189



4292453040



4287740573

Square

The Square scheme is like the rectangle color scheme, but the four colors are evenly spaced on the color wheel.



4292453040



4290752648



4286495921



4288328409

Rectangle

The Rectangle color scheme consists of four colors that form a rectangle on the color wheel.



4292453040



4292192145



4286495921



4286364112

Sweetspot

The Sweet Spot groups the original color and five complimentary colors.



4292453040



4294962160



4291470041



4286608246



4278190080



4286611584

Same Dimension

The Same Dimension uses a secret algorithm to generate beautiful new colors.



4292453040



4294947782



4292456354



4285424485



4289527852



4281204748

Inverse Universe

The Inverse Universe completely reimagines the original color for something new.



4292453040



4294947782



4288859353



4285424485



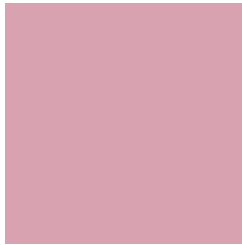
4289527852



4281204748

Previews

White Background



This preview shows how the Android color 4292453040 looks on a white background.

Color Contrast Check

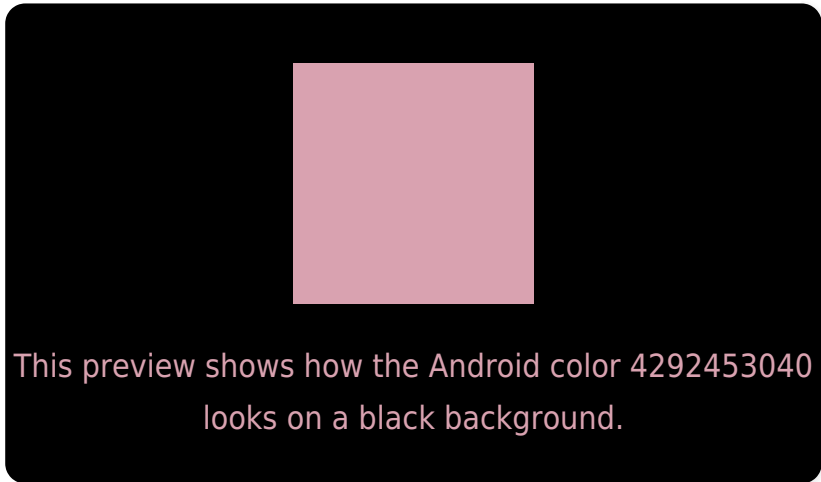
Large Text (above 18pt) WCAG AA × Fail

Any Text WCAG AA × Fail

Large Text (above 18pt) WCAG AAA × Fail

Any Text WCAG AAA × Fail

Black Background



Color Contrast Check

Large Text (above 18pt) WCAG AA ✓ Pass

Any Text WCAG AA ✓ Pass

Large Text (above 18pt) WCAG AAA ✓ Pass

Any Text WCAG AAA ✓ Pass

If you want to check with other color combinations, try the [Color Contrast Checker](#).

Android 4292453040 Background



This preview shows how black text looks on a background with the Android color 4292453040.



This preview shows how white text looks on a background with the Android color 4292453040.

Color Blindness Simulation

Color vision deficiency is a very complex topic, and I could not describe the different causes any better than Wikipedia does, so if you want to learn more, you should check out their [article about color blindness](#).


Dichromacy



Original Color
4292453040

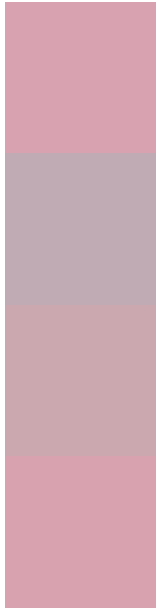
Protanopia
4289900728

Deuteranopia
4291013550



Tritanopia
4292453039

Trichromacy



Original Color
4292453040

Protanomaly
4290816949

Deuteranomaly
4291537071

Tritanomaly
4292453039

Monochromacy



Original Color
4292453040

Achromatopsia
4290032820

Achromatomaly
4290882995

CSS Examples

Text

The CSS property to change the color of the text to Android 4292453040 is called "color". The color property can be set on classes, ids or directly on the HTML element.

This example shows how text in the color `rgb(217, 162, 176)` looks like.

```
.text, #text, p{  
    color:rgb(217, 162, 176)  
}
```

If you want to add a text shadow in that color use the text-shadow property, you can generate a text shadow directly with our [CSS Text Shadow Generator](#).

Here you see how black text with a 4 pixel rgb(217, 162, 176) colored shadow looks like.

```
.shadow{ text-shadow: 4px 4px 2px rgb(217, 162, 176) }
```

Border

The CSS property to change the border of an element to Android 4292453040 is called "border". The border property can be set on classes, ids or directly on the HTML element.

This example shows the color as border, it can be applied via the CSS property "border" or "border-color".

```
.border, #border, table{ border:4px solid rgb(217, 162, 176) }
```

If only the border color should be changed use the property `border-color`.

```
.border{ border-color:rgb(217, 162, 176) }
```

If you want to add a box shadow in that color use:

Here you see how a box with a 4 pixel `rgb(217, 162, 176)` colored shadow looks like.

```
.boxshadow{ -moz-box-shadow:4px 4px 4px  
4px rgb(217, 162, 176); -webkit-box-  
shadow:4px 4px 4px 4px rgb(217, 162, 176);  
box-shadow:4px 4px 4px 4px rgb(217, 162,  
176) }
```

Background

The CSS property to change the background color of an element to Android 4292453040 is called "background". The background property can be set on classes, ids or directly on the HTML element.

```
.background, #background, body{  
background: rgb(217, 162, 176) }
```

If only the background color should be changed can be used:

```
.background{ background-color: rgb(217,  
162, 176) }
```

This example shows the color as background, it is applied via the CSS property "background".

To optimize and compress your CSS code, you can use our [online CSS compressor and optimizer](#) based on csstidy. If you want to create a linear or radial gradient as background or border, check our [CSS Gradient Generator](#).

Hey! You found this booklet interesting? Support Converting Colors with the new Membership Option!

The pro membership hides all ads, plus gives you double the colors in the color bucket, and more awesome pro features!

[Learn more, Memberships starting at \\$2.50/m!](#)

**Follow me
on Twitter!**

@ConvertingColor