

Converting Colors

Android(4292454060)

Have a look what the booklet for
Android(4292454060) contains.

Android(4292454060)	3
<i>Conversions</i>	4
<i>Details</i>	6
<i>Harmonies</i>	11
<i>Previews</i>	23
<i>Color Blindness Simulation</i>	26
<i>CSS Examples</i>	29

Color

Android(4292454060)

Conversions

Conversions Part 1

Format	Color
Hex	D9A6AC
RGB	217, 166, 172
RGB Percent	85%, 65%, 67%
CMY	0.1490, 0.3490, 0.3255
CMYK	0.00, 0.24, 0.21, 0.15
HSL	353°, 40%, 75%
HSV	353°, 24%, 85%
XYZ	49.6979, 45.0027, 45.0968
YIQ	181.9330, 28.4700, 12.6780

Conversions

Conversions Part 2

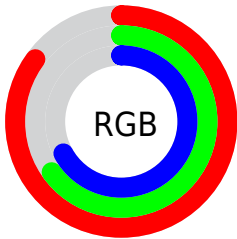
Format	Color
R _Y B	217, 166, 172
Decimal	14263980
CIE Lab	72.89, 19.65, 4.18
CIE LCh	73, 20.091, 12.017
Yxy	45.0027, 0.3555, 0.3219
Android (android.graphics.Color)	4292454060 (0xFFD9A6AC)
YUV	181.9330, -4.8970, 30.7538
Hunter-Lab	67.0841, 14.8411, 7.1016

Details

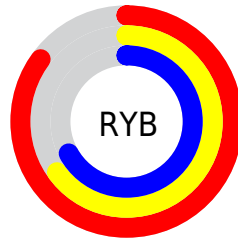
The Android color `4292454060` is a light color, and the websafe version is hex `CC9999`. A complement of this color would be `4289124819`, and the grayscale version is `4290164406`.

A 20% lighter version of the original color is `4294958563`, and `4288770680` is the 20% darker color. If you saturate the color by 10%, you get `4292448409`, and if you desaturate by 10%, it is `4292459711`.

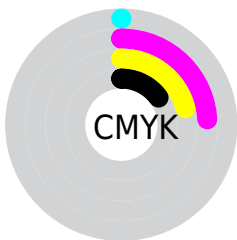
Distribution



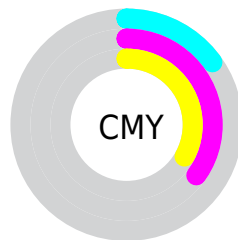
- Red (85%)
- Green (65%)
- Blue (67%)



- Red (85%)
- Yellow (65%)
- Blue (67%)



- Cyan (0%)
- Magenta (24%)
- Yellow (21%)
- Black (15%)



- Cyan (15%)
- Magenta (35%)
- Yellow (33%)

Brightness & Saturation Gradients

These gradients show how the Android color 4292454060 changes by changing the brightness by 10 percent. The first figure shows a shift by +10% for each color and the second figure -10%.

Similar to the brightness gradients but the following saturation gradients show a change of the Android color 4292454060 by changing the saturation by 10% instead.



4292454060



4292454060

4294967295



4290612113



4294958563



4288770680



4294966015



4286994783



4285284679



4283640625



4282062108



4280745985



4278190080



4292454060



4292454060

 4292448409

 4292459711

 4292443014

 4292465106

 4292437363

 4292470757

 4292431711

 4292476409

 4292426316

 4292476927

 4292420665

 4292415014

 4292411418

Harmonies

Analogous

The Analogous color harmony consists of three colors that are next to each other on the color wheel.



4291930047



4292454060



4292323739

Triad

The Triadic color harmony groups three colors that are evenly spaced from another and form a triangle on the color wheel.



4292454060



4289051031



4287674581

Complementary

The Complementary color scheme is a pair of colors which are on the opposite of each other on the color wheel.



4292454060



4289124819

Split Complementary

Split-complementary colors differ from the complementary color scheme. The scheme consists of three colors, the original color and two neighbors of the complement color.



4286758091



4292454060



4287741351

Square

The Square scheme is like the rectangle color scheme, but the four colors are evenly spaced on the color wheel.



4292454060



4290360463



4286824122



4289245911

Rectangle

The Rectangle color scheme consists of four colors that form a rectangle on the color wheel.



4292454060



4291865747



4286824122



4287281619

Sweetspot

The Sweet Spot groups the original color and five complimentary colors.



4292454060



4294962671



4291995353



4286608759



4278190080



4286611584

Same Dimension

The Same Dimension uses a secret algorithm to generate beautiful new colors.



4292454060



4294949056



4292458918



4285424484



4289527828



4281204741

Inverse Universe

The Inverse Universe completely reimagines the original color for something new.



4292454060



4294949056



4289119961



4285424484



4289527828



4281204741

Previews

White Background



This preview shows how the Android color 4292454060 looks on a white background.

Color Contrast Check

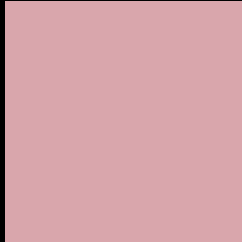
Large Text (above 18pt) WCAG AA × Fail

Any Text WCAG AA × Fail

Large Text (above 18pt) WCAG AAA × Fail

Any Text WCAG AAA × Fail

Black Background



This preview shows how the Android color 4292454060 looks on a black background.

Color Contrast Check

Large Text (above 18pt) WCAG AA ✓ Pass

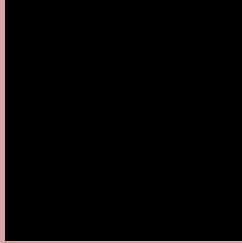
Any Text WCAG AA ✓ Pass

Large Text (above 18pt) WCAG AAA ✓ Pass

Any Text WCAG AAA ✓ Pass

If you want to check with other color combinations, try the [Color Contrast Checker](#).

Android 4292454060 Background



This preview shows how black text looks on a background with the Android color 4292454060.



This preview shows how white text looks on a background with the Android color 4292454060.

Color Blindness Simulation

Color vision deficiency is a very complex topic, and I could not describe the different causes any better than Wikipedia does, so if you want to learn more, you should check out their [article about color blindness](#).


Dichromacy



Original Color
4292454060

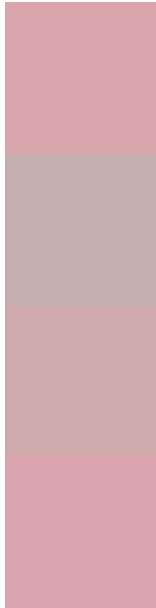
Protanopia
4290163379

Deuteranopia
4291341739



Tritanopia
4292519346

Trichromacy



Original Color
4292454060

Protanomaly
4291014320

Deuteranomaly
4291734187

Tritanomaly
4292519344

Monochromacy



Original Color
4292454060

Achromatopsia
4290164406

Achromatomaly
4291014834

CSS Examples

Text

The CSS property to change the color of the text to Android 4292454060 is called "color". The color property can be set on classes, ids or directly on the HTML element.

This example shows how text in the color `rgb(217, 166, 172)` looks like.

```
.text, #text, p{  
    color:rgb(217, 166, 172)  
}
```

If you want to add a text shadow in that color use the text-shadow property, you can generate a text shadow directly with our [CSS Text Shadow Generator](#).

Here you see how black text with a 4 pixel rgb(217, 166, 172) colored shadow looks like.

```
.shadow{ text-shadow: 4px 4px 2px rgb(217, 166, 172) }
```

Border

The CSS property to change the border of an element to Android 4292454060 is called "border". The border property can be set on classes, ids or directly on the HTML element.

This example shows the color as border, it can be applied via the CSS property "border" or "border-color".

```
.border, #border, table{ border:4px solid rgb(217, 166, 172) }
```

If only the border color should be changed use the property `border-color`.

```
.border{ border-color:rgb(217, 166, 172) }
```

If you want to add a box shadow in that color use:

Here you see how a box with a 4 pixel `rgb(217, 166, 172)` colored shadow looks like.

```
.boxshadow{ -moz-box-shadow:4px 4px 4px  
4px rgb(217, 166, 172); -webkit-box-  
shadow:4px 4px 4px 4px rgb(217, 166, 172);  
box-shadow:4px 4px 4px 4px rgb(217, 166,  
172) }
```

Background

The CSS property to change the background color of an element to Android 4292454060 is called "background". The background property can be set on classes, ids or directly on the HTML element.

```
.background, #background, body{  
background: rgb(217, 166, 172) }
```

If only the background color should be changed can be used:

```
.background{ background-color: rgb(217,  
166, 172) }
```

This example shows the color as background, it is applied via the CSS property "background".

To optimize and compress your CSS code, you can use our [online CSS compressor and optimizer](#) based on csstidy. If you want to create a linear or radial gradient as background or border, check our [CSS Gradient Generator](#).

Hey! You found this booklet interesting? Support Converting Colors with the new Membership Option!

The pro membership hides all ads, plus gives you double the colors in the color bucket, and more awesome pro features!

[Learn more, Memberships starting at \\$2.50/m!](#)

**Follow me
on Twitter!**

@ConvertingColor