

Converting Colors

Android(4292454288)

Have a look what the booklet for
Android(4292454288) contains.

Android(4292454288)	3
<i>Conversions</i>	4
<i>Details</i>	6
<i>Harmonies</i>	11
<i>Previews</i>	23
<i>Color Blindness Simulation</i>	26
<i>CSS Examples</i>	29

Color

Android(4292454288)

Conversions

Conversions Part 1

Format	Color
Hex	D9A790
RGB	217, 167, 144
RGB Percent	85%, 65%, 56%
CMY	0.1490, 0.3451, 0.4353
CMYK	0.00, 0.23, 0.34, 0.15
HSL	19°, 49%, 71%
HSV	19°, 34%, 85%
XYZ	47.4680, 44.4028, 32.4543
YIQ	179.3280, 37.1830, 3.4470

Conversions

Conversions Part 2

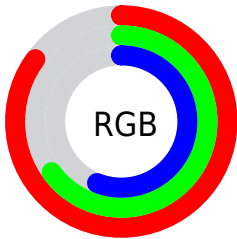
Format	Color
RYB	217, 178, 144
Decimal	14264208
CIELab	72.50, 15.24, 18.98
CIElCh	72, 24.346, 51.234
Yxy	44.4028, 0.3818, 0.3572
Android (android.graphics.Color)	4292454288 (0xFFD9A790)
YUV	179.3280, -17.4167, 33.0383
Hunter-Lab	66.6354, 10.5433, 17.7680

Details

The Android color `4292454288` is a light color, and the websafe version is hex `CC9999`. A complement of this color would be `4287677145`, and the grayscale version is `4289967027`.

A 20% lighter version of the original color is `4294958790`, and `4288770910` is the 20% darker color. If you saturate the color by 10%, you get `4292450426`, and if you desaturate by 10%, it is `4292458150`.

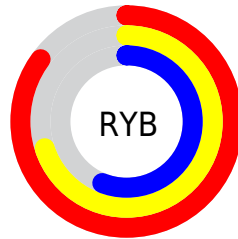
Distribution



Red (85%)

Green (65%)

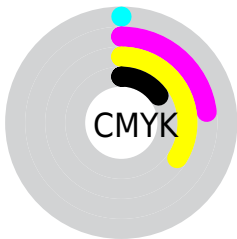
Blue (56%)



Red (85%)

Yellow (70%)

Blue (56%)

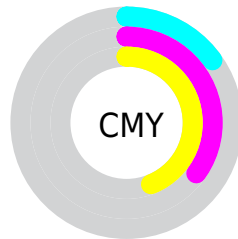


Cyan (0%)

Magenta (23%)

Yellow (34%)

Black (15%)



Cyan (15%)

Magenta (35%)

Yellow (44%)

Brightness & Saturation Gradients

These gradients show how the Android color 4292454288 changes by changing the brightness by 10 percent. The first figure shows a shift by +10% for each color and the second figure -10%.

Similar to the brightness gradients but the following saturation gradients show a change of the Android color 4292454288 by changing the saturation by 10% instead.

 4292454288

 4292454288

4294967295

 4290612598

 4294958790

 4288770910

 4294966242

 4286995014

 4285219631

 4283509786

 4281931520

 4280418304

 4278190080

 4292454288

 4292454288

 4292450426

 4292458150

 4292446565

 4292462011

 4292442703

 4292465873

 4292439097

 4292469479

 4292435236

 4292473341

 4292431374

 4292476927

 4292428800

Harmonies

Analogous

The Analogous color harmony consists of three colors that are next to each other on the color wheel.



4292911779



4292454288



4291407494

Triad

The Triadic color harmony groups three colors that are evenly spaced from another and form a triangle on the color wheel.



4292454288



4286693034



4289572571

Complementary

The Complementary color scheme is a pair of colors which are on the opposite of each other on the color wheel.



4292454288



4287677145

Split Complementary

Split-complementary colors differ from the complementary color scheme. The scheme consists of three colors, the original color and two neighbors of the complement color.



4287543005



4292454288



4285775553

Square

The Square scheme is like the rectangle color scheme, but the four colors are evenly spaced on the color wheel.



4292454288



4288199573



4286036948



4291340238

Rectangle

The Rectangle color scheme consists of four colors that form a rectangle on the color wheel.



4292454288



4290425734



4286036948



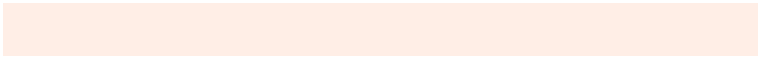
4288917981

Sweetspot

The Sweet Spot groups the original color and five complimentary colors.



4292454288



4294962918



4292448451



4286608752



4278190080



4286611584

Same Dimension

The Same Dimension uses a secret algorithm to generate beautiful new colors.



4292454288



4294949273



4292463248



4285425251



4289541888



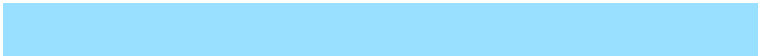
4281208320

Inverse Universe

The Inverse Universe completely reimagines the original color for something new.



4287677145



4288274431



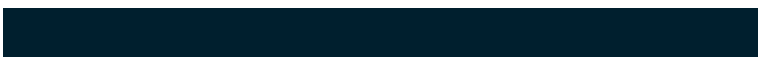
4287668185



4284705390



4278220717



4278198062

Previews

White Background



This preview shows how the Android color 4292454288 looks on a white background.

Color Contrast Check

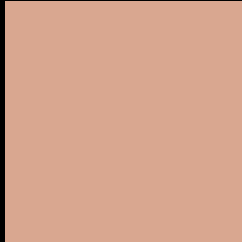
Large Text (above 18pt) WCAG AA × Fail

Any Text WCAG AA × Fail

Large Text (above 18pt) WCAG AAA × Fail

Any Text WCAG AAA × Fail

Black Background



This preview shows how the Android color 4292454288 looks on a black background.

Color Contrast Check

Large Text (above 18pt) WCAG AA ✓ Pass

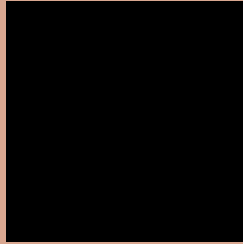
Any Text WCAG AA ✓ Pass

Large Text (above 18pt) WCAG AAA ✓ Pass

Any Text WCAG AAA ✓ Pass

If you want to check with other color combinations, try the [Color Contrast Checker](#).

Android 4292454288 Background



This preview shows how black text looks on a background with the Android color 4292454288.



This preview shows how white text looks on a background with the Android color 4292454288.

Color Blindness Simulation

Color vision deficiency is a very complex topic, and I could not describe the different causes any better than Wikipedia does, so if you want to learn more, you should check out their [article about color blindness](#).


Dichromacy



Original Color
4292454288

Protanopia
4290556565

Deuteranopia
4291799951



Tritanopia
4292649903

Trichromacy



Original Color
4292454288

Protanomaly
4291276435

Deuteranomaly
4292061839

Tritanomaly
4292584612

Monochromacy



Original Color
4292454288

Achromatopsia
4289967027

Achromatomaly
4290883494

CSS Examples

Text

The CSS property to change the color of the text to Android 4292454288 is called "color". The color property can be set on classes, ids or directly on the HTML element.

This example shows how text in the color `rgb(217, 167, 144)` looks like.

```
.text, #text, p{  
    color:rgb(217, 167, 144)  
}
```

If you want to add a text shadow in that color use the text-shadow property, you can generate a text shadow directly with our [CSS Text Shadow Generator](#).

Here you see how black text with a 4 pixel rgb(217, 167, 144) colored shadow looks like.

```
.shadow{ text-shadow: 4px 4px 2px rgb(217, 167, 144) }
```

Border

The CSS property to change the border of an element to Android 4292454288 is called "border". The border property can be set on classes, ids or directly on the HTML element.

This example shows the color as border, it can be applied via the CSS property "border" or "border-color".

```
.border, #border, table{ border:4px solid rgb(217, 167, 144) }
```

If only the border color should be changed use the property `border-color`.

```
.border{ border-color:rgb(217, 167, 144) }
```

If you want to add a box shadow in that color use:

Here you see how a box with a 4 pixel `rgb(217, 167, 144)` colored shadow looks like.

```
.boxshadow{ -moz-box-shadow:4px 4px 4px  
4px rgb(217, 167, 144); -webkit-box-  
shadow:4px 4px 4px 4px rgb(217, 167, 144);  
box-shadow:4px 4px 4px 4px rgb(217, 167,  
144) }
```

Background

The CSS property to change the background color of an element to Android 4292454288 is called "background". The background property can be set on classes, ids or directly on the HTML element.

```
.background, #background, body{  
background: rgb(217, 167, 144) }
```

If only the background color should be changed can be used:

```
.background{ background-color: rgb(217,  
167, 144) }
```

This example shows the color as background, it is applied via the CSS property "background".

To optimize and compress your CSS code, you can use our [online CSS compressor and optimizer](#) based on csstidy. If you want to create a linear or radial gradient as background or border, check our [CSS Gradient Generator](#).

Hey! You found this booklet interesting? Support Converting Colors with the new Membership Option!

The pro membership hides all ads, plus gives you double the colors in the color bucket, and more awesome pro features!

[Learn more, Memberships starting at \\$2.50/m!](#)

**Follow me
on Twitter!**

@ConvertingColor