

Converting Colors

Android(4292454559)

Have a look what the booklet for
Android(4292454559) contains.

Android(4292454559)	3
<i>Conversions</i>	4
<i>Details</i>	6
<i>Harmonies</i>	11
<i>Previews</i>	23
<i>Color Blindness Simulation</i>	26
<i>CSS Examples</i>	29

Color

Android(4292454559)

Conversions

Conversions Part 1

Format	Color
Hex	D9A89F
RGB	217, 168, 159
RGB Percent	85%, 66%, 62%
CMY	0.1490, 0.3412, 0.3765
CMYK	0.00, 0.23, 0.27, 0.15
HSL	9°, 43%, 74%
HSV	9°, 27%, 85%
XYZ	48.8759, 45.2602, 38.9609
YIQ	181.6250, 32.0930, 7.5890

Conversions

Conversions Part 2

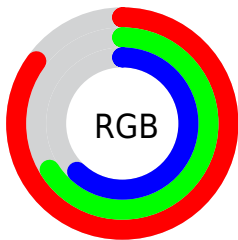
Format	Color
R _Y B	217, 170, 159
Decimal	14264479
CIE Lab	73.06, 16.69, 11.57
CIE LCh	73, 20.305, 34.730
Yxy	45.2602, 0.3672, 0.3401
Android (android.graphics.Color)	4292454559 (0xFFD9A89F)
YUV	181.6250, -11.1541, 31.0239
Hunter-Lab	67.2757, 11.9481, 12.7567

Details

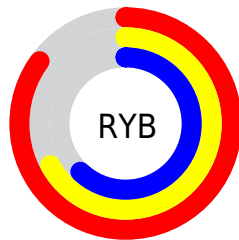
The Android color `4292454559` is a light color, and the websafe version is hex `CC9999`. A complement of this color would be `4288663769`, and the grayscale version is `4290164406`.

A 20% lighter version of the original color is `4294959062`, and `4288771180` is the 20% darker color. If you saturate the color by 10%, you get `4292449929`, and if you desaturate by 10%, it is `4292459189`.

Distribution



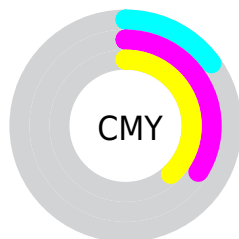
- Red (85%)
- Green (66%)
- Blue (62%)



- Red (85%)
- Yellow (67%)
- Blue (62%)



- Cyan (0%)
- Magenta (23%)
- Yellow (27%)
- Black (15%)



- Cyan (15%)
- Magenta (34%)
- Yellow (38%)

Brightness & Saturation Gradients

These gradients show how the Android color 4292454559 changes by changing the brightness by 10 percent. The first figure shows a shift by +10% for each color and the second figure -10%.

Similar to the brightness gradients but the following saturation gradients show a change of the Android color 4292454559 by changing the saturation by 10% instead.

 4292454559

 4292454559

4294967295

 4290612613

 4294959062


 4288771180

 4294966514

 4286995283

 4285285180

 4283641127

 4281997074

 4280614912

 4278190080

 4292454559

 4292454559

 4292449929

 4292459189

 4292445044

 4292464074

 4292440414

 4292468704

 4292435784

 4292473334

 4292430899

 4292476927

 4292426269

 4292421639

 4292420096

Harmonies

Analogous

The Analogous color harmony consists of three colors that are next to each other on the color wheel.



4292454065



4292454559



4291800466

Triad

The Triadic color harmony groups three colors that are evenly spaced from another and form a triangle on the color wheel.



4292454559



4288003491



4288853208

Complementary

The Complementary color scheme is a pair of colors which are on the opposite of each other on the color wheel.



4292454559



4288663769

Split Complementary

Split-complementary colors differ from the complementary color scheme. The scheme consists of three colors, the original color and two neighbors of the complement color.



4287412948



4292454559



4286955190

Square

The Square scheme is like the rectangle color scheme, but the four colors are evenly spaced on the color wheel.



4292454559



4289378709



4286692808



4290424530

Rectangle

The Rectangle color scheme consists of four colors that form a rectangle on the color wheel.



4292454559



4291146127



4286692808



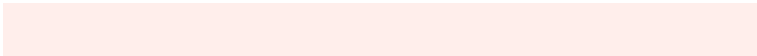
4288329432

Sweetspot

The Sweet Spot groups the original color and five complimentary colors.



4292454559



4294962923



4292452304



4286608755



4278190080



4286611584

Same Dimension

The Same Dimension uses a secret algorithm to generate beautiful new colors.



4292454559



4294949549



4292461983



4285424739



4289534720



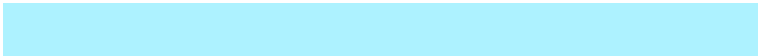
4281206528

Inverse Universe

The Inverse Universe completely reimagines the original color for something new.



4288663769



4289590015



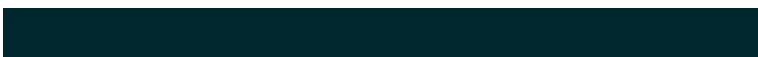
4288656345



4284705902



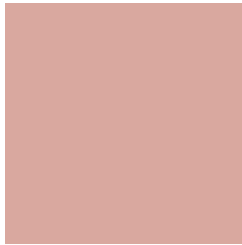
4278227629



4278200110

Previews

White Background



This preview shows how the Android color 4292454559 looks on a white background.

Color Contrast Check

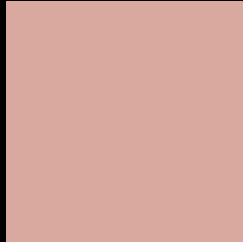
Large Text (above 18pt) WCAG AA × Fail

Any Text WCAG AA × Fail

Large Text (above 18pt) WCAG AAA × Fail

Any Text WCAG AAA × Fail

Black Background



This preview shows how the Android color 4292454559 looks on a black background.

Color Contrast Check

Large Text (above 18pt) WCAG AA ✓ Pass

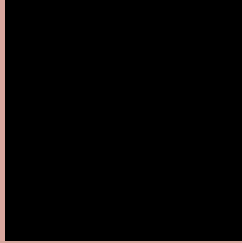
Any Text WCAG AA ✓ Pass

Large Text (above 18pt) WCAG AAA ✓ Pass

Any Text WCAG AAA ✓ Pass

If you want to check with other color combinations, try the [Color Contrast Checker](#).

Android 4292454559 Background



This preview shows how black text looks on a background with the Android color 4292454559.




This preview shows how white text looks on a background with the Android color 4292454559.

Color Blindness Simulation

Color vision deficiency is a very complex topic, and I could not describe the different causes any better than Wikipedia does, so if you want to learn more, you should check out their [article about color blindness](#).

Dichromacy





Tritanopia
4292584882

Trichromacy



Original Color
4292454559

Protanomaly
4291145635

Deuteranomaly
4291931038

Tritanomaly
4292519595

Monochromacy



Original Color
4292454559

Achromatopsia
4290164406

Achromatomaly
4291015086

CSS Examples

Text

The CSS property to change the color of the text to Android 4292454559 is called "color". The color property can be set on classes, ids or directly on the HTML element.

This example shows how text in the color `rgb(217, 168, 159)` looks like.

```
.text, #text, p{  
    color:rgb(217, 168, 159)  
}
```

If you want to add a text shadow in that color use the text-shadow property, you can generate a text shadow directly with our [CSS Text Shadow Generator](#).

Here you see how black text with a 4 pixel rgb(217, 168, 159) colored shadow looks like.

```
.shadow{ text-shadow: 4px 4px 2px rgb(217, 168, 159) }
```

Border

The CSS property to change the border of an element to Android 4292454559 is called "border". The border property can be set on classes, ids or directly on the HTML element.

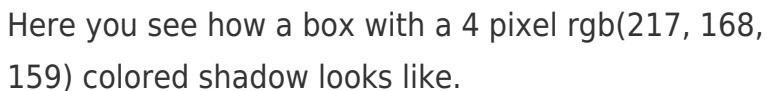
This example shows the color as border, it can be applied via the CSS property "border" or "border-color".

```
.border, #border, table{ border:4px solid rgb(217, 168, 159) }
```

If only the border color should be changed use the property `border-color`.

```
.border{ border-color:rgb(217, 168, 159) }
```

If you want to add a box shadow in that color use:



Here you see how a box with a 4 pixel `rgb(217, 168, 159)` colored shadow looks like.

```
.boxshadow{ -moz-box-shadow:4px 4px 4px  
4px rgb(217, 168, 159); -webkit-box-  
shadow:4px 4px 4px 4px rgb(217, 168, 159);  
box-shadow:4px 4px 4px 4px rgb(217, 168,  
159) }
```

Background

The CSS property to change the background color of an element to Android 4292454559 is called "background". The background property can be set on classes, ids or directly on the HTML element.

```
.background, #background, body{  
background: rgb(217, 168, 159) }
```

If only the background color should be changed can be used:

```
.background{ background-color: rgb(217,  
168, 159) }
```

This example shows the color as background, it is applied via the CSS property "background".

To optimize and compress your CSS code, you can use our [online CSS compressor and optimizer](#) based on csstidy. If you want to create a linear or radial gradient as background or border, check our [CSS Gradient Generator](#).

Hey! You found this booklet interesting? Support Converting Colors with the new Membership Option!

The pro membership hides all ads, plus gives you double the colors in the color bucket, and more awesome pro features!

[Learn more, Memberships starting at \\$2.50/m!](#)

**Follow me
on Twitter!**

@ConvertingColor