

# Converting Colors

Android(4292457389)

Have a look what the booklet for  
Android(4292457389) contains.

<b>Android(4292457389)</b> .....	3
<b><i>Conversions</i></b> .....	4
<b><i>Details</i></b> .....	6
<b><i>Harmonies</i></b> .....	11
<b><i>Previews</i></b> .....	23
<b><i>Color Blindness Simulation</i></b> .....	26
<b><i>CSS Examples</i></b> .....	29

# **Color**

**Android(4292457389)**

# Conversions

## Conversions Part 1

Format	Color
Hex	D9B3AD
RGB	217, 179, 173
RGB Percent	85%, 70%, 68%
CMY	0.1490, 0.2980, 0.3216
CMYK	0.00, 0.18, 0.20, 0.15
HSL	8°, 37%, 76%
HSV	8°, 20%, 85%
XYZ	52.2782, 50.0090, 46.4325
YIQ	189.6780, 24.5740, 6.1900

# Conversions

## Conversions Part 2

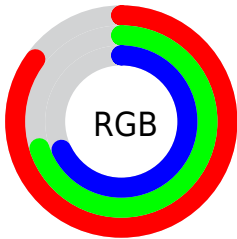
<b>Format</b>	<b>Color</b>
<b>R<sub>YB</sub></b>	217, 180, 173
Decimal	14267309
CIE Lab	76.07, 12.79, 8.21
CIE LCh	76, 15.201, 32.692
Yxy	50.0090, 0.3515, 0.3363
Android (android.graphics.Color)	4292457389 (0xFFD9B3AD)
YUV	189.6780, -8.2223, 23.9614
Hunter-Lab	70.7171, 8.2028, 10.5724

# Details

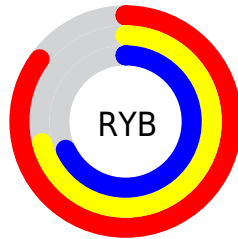
The Android color `4292457389` is a light color, and the websafe version is hex `CC9999`. A complement of this color would be `4289582041`, and the grayscale version is `4290690750`.

A 20% lighter version of the original color is `4294962148`, and `4288839289` is the 20% darker color. If you saturate the color by 10%, you get `4292452503`, and if you desaturate by 10%, it is `4292462275`.

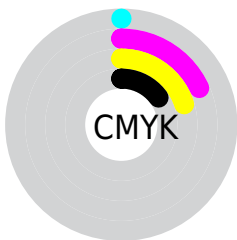
# Distribution



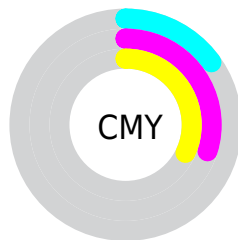
- Red (85%)
- Green (70%)
- Blue (68%)



- Red (85%)
- Yellow (71%)
- Blue (68%)



- Cyan (0%)
- Magenta (18%)
- Yellow (20%)
- Black (15%)



- Cyan (15%)
- Magenta (30%)
- Yellow (32%)

# Brightness & Saturation Gradients

These gradients show how the Android color 4292457389 changes by changing the brightness by 10 percent. The first figure shows a shift by +10% for each color and the second figure -10%.

Similar to the brightness gradients but the following saturation gradients show a change of the Android color 4292457389 by changing the saturation by 10% instead.



 4292457389

 4292457389

4294967295

 4290615442

 4294962148

 4288839289

 4287063392

 4285353288

 4283708978

 4282130717

 4280748803

 4278190080

 4292457389

 4292457389

 4292452503

 4292462275

 4292447874

 4292466904

 4292442988

 4292471790

 4292438102

 4292476671

 4292433217

 4292476927

 4292428587

 4292423701

 4292419072

# Harmonies

## Analogous

The Analogous color harmony consists of three colors that are next to each other on the color wheel.



4292391611



4292457389



4291999395

# Triad

The Triadic color harmony groups three colors that are evenly spaced from another and form a triangle on the color wheel.



4292457389



4289119150



4289641687

# Complementary

The Complementary color scheme is a pair of colors which are on the opposite of each other on the color wheel.



4292457389



4289582041

# Split Complementary

Split-complementary colors differ from the complementary color scheme. The scheme consists of three colors, the original color and two neighbors of the complement color.



4288659924



4292457389



4288398524

# Square

The Square scheme is like the rectangle color scheme, but the four colors are evenly spaced on the color wheel.



4292457389



4290166692



4288136138



4290820307

# Rectangle

The Rectangle color scheme consists of four colors that form a rectangle on the color wheel.



4292457389



4291475872



4288136138



4289248983

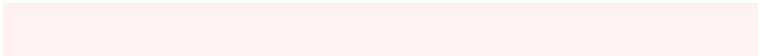


# Sweetspot

The Sweet Spot groups the original color and five complimentary colors.



4292457389



4294963952



4292455891



4286609527



4278190080



4286611584



# Same Dimension

The Same Dimension uses a secret algorithm to generate beautiful new colors.



4292457389



4294953666



4292463021



4285424739



4289533952



4281206272

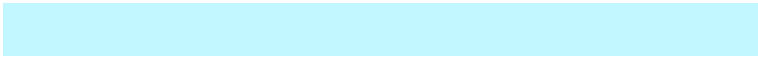


# Inverse Universe

The Inverse Universe completely reimagines the original color for something new.



4289582041



4290967551



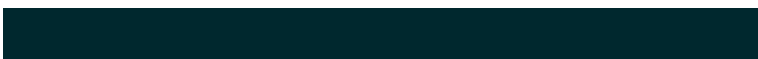
4289576409



4284705902



4278228653

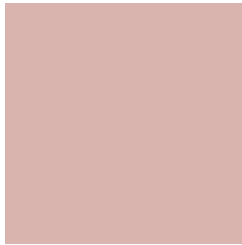


4278200366



# Previews

## White Background



This preview shows how the Android color 4292457389 looks on a white background.

## Color Contrast Check

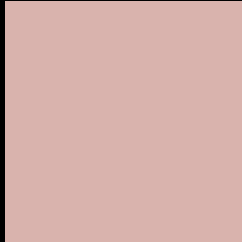
Large Text (above 18pt) WCAG AA × Fail

Any Text WCAG AA × Fail

Large Text (above 18pt) WCAG AAA × Fail

Any Text WCAG AAA × Fail

# Black Background



This preview shows how the Android color 4292457389 looks on a black background.

## Color Contrast Check

Large Text (above 18pt) WCAG AA ✓ Pass

Any Text WCAG AA ✓ Pass

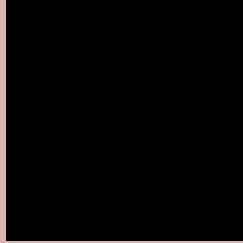
Large Text (above 18pt) WCAG AAA ✓ Pass

Any Text WCAG AAA ✓ Pass

If you want to check with other color combinations, try the [Color Contrast Checker](#).



# Android 4292457389 Background



This preview shows how black text looks on a background with the Android color 4292457389.



This preview shows how white text looks on a background with the Android color 4292457389.

# Color Blindness Simulation

Color vision deficiency is a very complex topic, and I could not describe the different causes any better than Wikipedia does, so if you want to learn more, you should check out their [article about color blindness](#).


## Dichromacy



**Original Color**  
4292457389

**Protanopia**  
4290952113

**Deuteranopia**  
4292130221



**Tritanopia**  
4292587710

# Trichromacy



**Original Color**  
4292457389

**Protanomaly**  
4291475632

**Deuteranomaly**  
4292261037

**Tritanomaly**  
4292522424

# Monochromacy



**Original Color**  
4292457389

**Achromatopsia**  
4290690750

**Achromatomaly**  
4291345080

# CSS Examples

## Text

The CSS property to change the color of the text to Android 4292457389 is called "color". The color property can be set on classes, ids or directly on the HTML element.

This example shows how text in the color `rgb(217, 179, 173)` looks like.

```
.text, #text, p{  
    color:rgb(217, 179, 173)  
}
```

If you want to add a text shadow in that color use the text-shadow property, you can generate a text shadow directly with our [CSS Text Shadow Generator](#).

Here you see how black text with a 4 pixel rgb(217, 179, 173) colored shadow looks like.

```
.shadow{ text-shadow: 4px 4px 2px rgb(217, 179, 173) }
```

## Border

The CSS property to change the border of an element to Android 4292457389 is called "border". The border property can be set on classes, ids or directly on the HTML element.

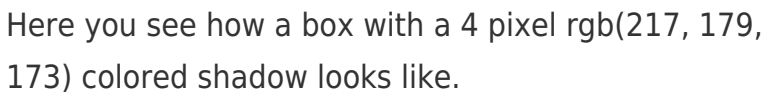
This example shows the color as border, it can be applied via the CSS property "border" or "border-color".

```
.border, #border, table{ border:4px solid rgb(217, 179, 173) }
```

If only the border color should be changed use the property `border-color`.

```
.border{ border-color:rgb(217, 179, 173) }
```

If you want to add a box shadow in that color use:



Here you see how a box with a 4 pixel `rgb(217, 179, 173)` colored shadow looks like.

```
.boxshadow{ -moz-box-shadow:4px 4px 4px 4px rgb(217, 179, 173); -webkit-box-shadow:4px 4px 4px 4px rgb(217, 179, 173); box-shadow:4px 4px 4px 4px rgb(217, 179, 173) }
```

# Background

The CSS property to change the background color of an element to Android 4292457389 is called "background". The background property can be set on classes, ids or directly on the HTML element.

```
.background, #background, body{  
background: rgb(217, 179, 173) }
```

If only the background color should be changed can be used:

```
.background{ background-color: rgb(217,  
179, 173) }
```

This example shows the color as background, it is applied via the CSS property "background".

To optimize and compress your CSS code, you can use our [online CSS compressor and optimizer](#) based on csstidy. If you want to create a linear or radial gradient as background or border, check our [CSS Gradient Generator](#).



Hey! You found this booklet interesting? Support Converting Colors with the new Membership Option!

The pro membership hides all ads, plus gives you double the colors in the color bucket, and more awesome pro features!

**[Learn more, Memberships starting at \\$2.50/m!](#)**

**Follow me  
on Twitter!**

@ConvertingColor