

# Converting Colors

Android(4292457901)

Have a look what the booklet for  
Android(4292457901) contains.

<b>Android(4292457901)</b> .....	3
<b><i>Conversions</i></b> .....	4
<b><i>Details</i></b> .....	6
<b><i>Harmonies</i></b> .....	11
<b><i>Previews</i></b> .....	23
<b><i>Color Blindness Simulation</i></b> .....	26
<b><i>CSS Examples</i></b> .....	29

# **Color**

**Android(4292457901)**

# Conversions

## Conversions Part 1

Format	Color
Hex	D9B5AD
RGB	217, 181, 173
RGB Percent	85%, 71%, 68%
CMY	0.1490, 0.2902, 0.3216
CMYK	0.00, 0.17, 0.20, 0.15
HSL	11°, 37%, 76%
HSV	11°, 20%, 85%
XYZ	52.6820, 50.8166, 46.5671
YIQ	190.8520, 24.0240, 5.1440

# Conversions

## Conversions Part 2

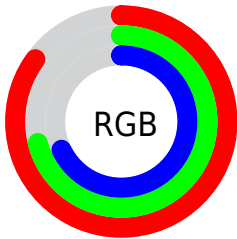
Format	Color
R <sub>Y</sub> B	217, 183, 173
Decimal	14267821
CIE Lab	76.57, 11.72, 8.91
CIE LCh	77, 14.725, 37.259
Yxy	50.8166, 0.3511, 0.3386
Android (android.graphics.Color)	4292457901 (0xFFD9B5AD)
YUV	190.8520, -8.8010, 22.9318
Hunter-Lab	71.2858, 7.1659, 11.1691

# Details

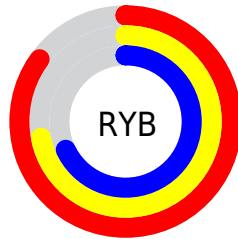
The Android color `4292457901` is a light color, and the websafe version is hex `CC9999`. A complement of this color would be `4289581529`, and the grayscale version is `4290756543`.

A 20% lighter version of the original color is `4294962660`, and `4288839801` is the 20% darker color. If you saturate the color by 10%, you get `4292453271`, and if you desaturate by 10%, it is `4292462531`.

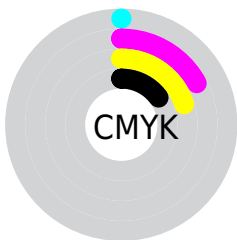
# Distribution



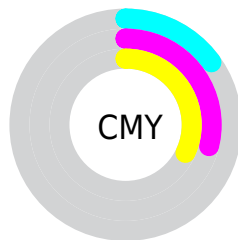
- Red (85%)
- Green (71%)
- Blue (68%)



- Red (85%)
- Yellow (72%)
- Blue (68%)



- Cyan (0%)
- Magenta (17%)
- Yellow (20%)
- Black (15%)



- Cyan (15%)
- Magenta (29%)
- Yellow (32%)

# Brightness & Saturation Gradients

These gradients show how the Android color 4292457901 changes by changing the brightness by 10 percent. The first figure shows a shift by +10% for each color and the second figure -10%.

Similar to the brightness gradients but the following saturation gradients show a change of the Android color 4292457901 by changing the saturation by 10% instead.



 4292457901

 4292457901

4294967295

 4290615954

 4294962660

 4288839801

 4287063904

 4285353800

 4283709490

 4282130973

 4280749315

 4278190080

 4292457901

 4292457901

 4292453271

 4292462531

 4292448642

 4292467160

 4292444268

 4292471534

 4292439638

 4292476159

 4292435009

 4292476927

 4292430379

 4292426005

 4292421376

# Harmonies

## Analogous

The Analogous color harmony consists of three colors that are next to each other on the color wheel.



4292457658



4292457901



4291934628

# Triad

The Triadic color harmony groups three colors that are evenly spaced from another and form a triangle on the color wheel.



4292457901



4289119410



4289904088

# Complementary

The Complementary color scheme is a pair of colors which are on the opposite of each other on the color wheel.



4292457901



4289581529

# Split Complementary

Split-complementary colors differ from the complementary color scheme. The scheme consists of three colors, the original color and two neighbors of the complement color.



4288922070



4292457901



4288464320

# Square

The Square scheme is like the rectangle color scheme, but the four colors are evenly spaced on the color wheel.



4292457901



4290101671



4288333005



4291082451

# Rectangle

The Rectangle color scheme consists of four colors that form a rectangle on the color wheel.



4292457901



4291411106



4288333005



4289576664



# Sweetspot

The Sweet Spot groups the original color and five complimentary colors.



4292457901



4294963952



4292455890



4286609527



4278190080



4286611584



# Same Dimension

The Same Dimension uses a secret algorithm to generate beautiful new colors.



4292457901



4294954434



4292463277



4285424995



4289536000



4281206784



# Inverse Universe

The Inverse Universe completely reimagines the original color for something new.



4289581529



4290966783



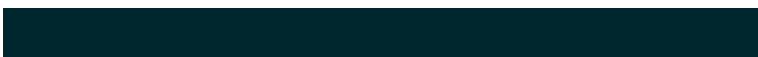
4289576153



4284705902



4278226605

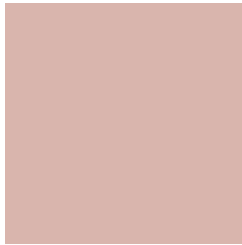


4278199854



# Previews

## White Background



This preview shows how the Android color 4292457901 looks on a white background.

## Color Contrast Check

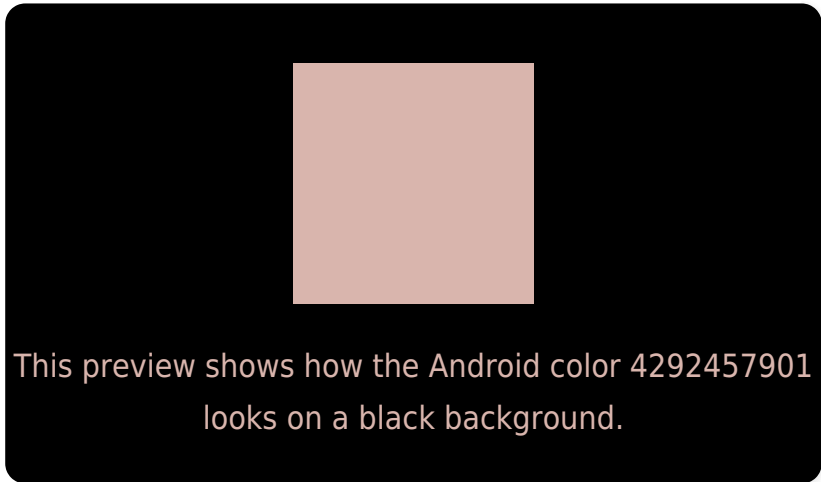
Large Text (above 18pt) WCAG AA × Fail

Any Text WCAG AA × Fail

Large Text (above 18pt) WCAG AAA × Fail

Any Text WCAG AAA × Fail

# Black Background



## Color Contrast Check

Large Text (above 18pt) WCAG AA ✓ Pass

Any Text WCAG AA ✓ Pass

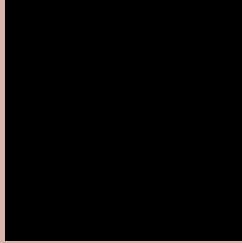
Large Text (above 18pt) WCAG AAA ✓ Pass

Any Text WCAG AAA ✓ Pass

If you want to check with other color combinations, try the [Color Contrast Checker](#).



# Android 4292457901 Background



This preview shows how black text looks on a background with the Android color 4292457901.




This preview shows how white text looks on a background with the Android color 4292457901.

# Color Blindness Simulation

Color vision deficiency is a very complex topic, and I could not describe the different causes any better than Wikipedia does, so if you want to learn more, you should check out their [article about color blindness](#).

## Dichromacy





**Tritanopia**  
4292588224

# Trichromacy



**Original Color**  
4292457901

**Protanomaly**  
4291541424

**Deuteranomaly**  
4292261549

**Tritanomaly**  
4292522937

# Monochromacy



**Original Color**  
4292457901

**Achromatopsia**  
4290756543

**Achromatomaly**  
4291345336

# CSS Examples

## Text

The CSS property to change the color of the text to Android 4292457901 is called "color". The color property can be set on classes, ids or directly on the HTML element.

This example shows how text in the color `rgb(217, 181, 173)` looks like.

```
.text, #text, p{  
    color:rgb(217, 181, 173)  
}
```

If you want to add a text shadow in that color use the text-shadow property, you can generate a text shadow directly with our [CSS Text Shadow Generator](#).

Here you see how black text with a 4 pixel rgb(217, 181, 173) colored shadow looks like.

```
.shadow{ text-shadow: 4px 4px 2px rgb(217, 181, 173) }
```

## Border

The CSS property to change the border of an element to Android 4292457901 is called "border". The border property can be set on classes, ids or directly on the HTML element.

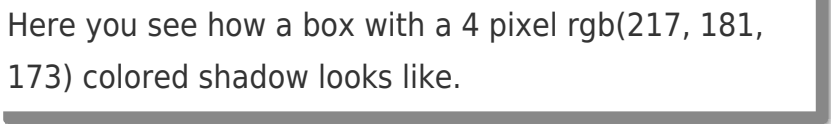
This example shows the color as border, it can be applied via the CSS property "border" or "border-color".

```
.border, #border, table{ border:4px solid rgb(217, 181, 173) }
```

If only the border color should be changed use the property `border-color`.

```
.border{ border-color:rgb(217, 181, 173) }
```

If you want to add a box shadow in that color use:



Here you see how a box with a 4 pixel `rgb(217, 181, 173)` colored shadow looks like.

```
.boxshadow{ -moz-box-shadow:4px 4px 4px  
4px rgb(217, 181, 173); -webkit-box-  
shadow:4px 4px 4px 4px rgb(217, 181, 173);  
box-shadow:4px 4px 4px 4px rgb(217, 181,  
173) }
```

# Background

The CSS property to change the background color of an element to Android 4292457901 is called "background". The background property can be set on classes, ids or directly on the HTML element.

```
.background, #background, body{  
background: rgb(217, 181, 173) }
```

If only the background color should be changed can be used:

```
.background{ background-color: rgb(217,  
181, 173) }
```

This example shows the color as background, it is applied via the CSS property "background".

To optimize and compress your CSS code, you can use our [online CSS compressor and optimizer](#) based on csstidy. If you want to create a linear or radial gradient as background or border, check our [CSS Gradient Generator](#).



Hey! You found this booklet interesting? Support Converting Colors with the new Membership Option!

The pro membership hides all ads, plus gives you double the colors in the color bucket, and more awesome pro features!

**[Learn more, Memberships starting at \\$2.50/m!](#)**

**Follow me  
on Twitter!**

@ConvertingColor