

# Converting Colors

Android(4292458149)

Have a look what the booklet for  
Android(4292458149) contains.

<b>Android(4292458149)</b> .....	3
<b><i>Conversions</i></b> .....	4
<b><i>Details</i></b> .....	6
<b><i>Harmonies</i></b> .....	11
<b><i>Previews</i></b> .....	23
<b><i>Color Blindness Simulation</i></b> .....	26
<b><i>CSS Examples</i></b> .....	29

# **Color**

**Android(4292458149)**

# Conversions

## Conversions Part 1

Format	Color
Hex	D9B6A5
RGB	217, 182, 165
RGB Percent	85%, 71%, 65%
CMY	0.1490, 0.2863, 0.3529
CMYK	0.00, 0.16, 0.24, 0.15
HSL	20°, 41%, 75%
HSV	20°, 24%, 85%
XYZ	52.1348, 50.9242, 42.6789
YIQ	190.5270, 26.3170, 2.1330

# Conversions

## Conversions Part 2

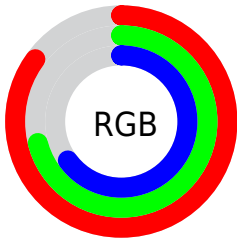
Format	Color
<a href="#">RYB</a>	<a href="#">217, 190, 165</a>
Decimal	<a href="#">14268069</a>
<a href="#">CIELab</a>	<a href="#">76.63, 10.01, 13.34</a>
<a href="#">CIElCh</a>	<a href="#">77, 16.682, 53.121</a>
<a href="#">Yxy</a>	<a href="#">50.9242, 0.3577, 0.3494</a>
Android ( <code>android.graphics.Color</code> )	<a href="#">4292458149</a> ( <code>0xFFD9B6A5</code> )
<a href="#">YUV</a>	<a href="#">190.5270, -12.5848, 23.2168</a>
<a href="#">Hunter-Lab</a>	<a href="#">71.3612, 5.5256, 14.4934</a>

# Details

The Android color `4292458149` is a light color, and the websafe version is hex `CC9999`. A complement of this color would be `4289054937`, and the grayscale version is `4290756543`.

A 20% lighter version of the original color is `4294962908`, and `4288774513` is the 20% darker color. If you saturate the color by 10%, you get `4292454287`, and if you desaturate by 10%, it is `4292462011`.

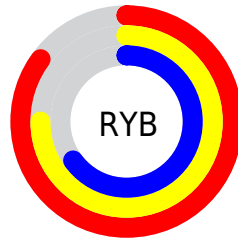
# Distribution



Red (85%)

Green (71%)

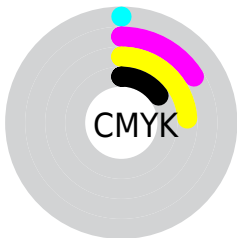
Blue (65%)



Red (85%)

Yellow (75%)

Blue (65%)

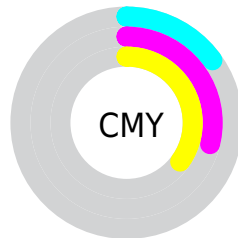


Cyan (0%)

Magenta (16%)

Yellow (24%)

Black (15%)



Cyan (15%)

Magenta (29%)

Yellow (35%)

# Brightness & Saturation Gradients

These gradients show how the Android color 4292458149 changes by changing the brightness by 10 percent. The first figure shows a shift by +10% for each color and the second figure -10%.

Similar to the brightness gradients but the following saturation gradients show a change of the Android color 4292458149 by changing the saturation by 10% instead.



 4292458149

 4292458149

4294967295

 4290616203

 4294962908

 4288774513

 4294967289

 4287064153

 4285354049

 4283709739

 4282131222

 4280684288

 4278190080

 4292458149

 4292458149

 4292454287

 4292462011

 4292450682

 4292465616

 4292446820

 4292469478

 4292443214

 4292473084

 4292439353

 4292476927

 4292435491

 4292431885

 4292429568

# Harmonies

## Analogous

The Analogous color harmony consists of three colors that are next to each other on the color wheel.



4292785074



4292458149



4291672991

# Triad

The Triadic color harmony groups three colors that are evenly spaced from another and form a triangle on the color wheel.



4292458149



4288464569



4290558681

# Complementary

The Complementary color scheme is a pair of colors which are on the opposite of each other on the color wheel.



4292458149



4289054937

# Split Complementary

Split-complementary colors differ from the complementary color scheme. The scheme consists of three colors, the original color and two neighbors of the complement color.



4289249499



4292458149



4288005833

# Square

The Square scheme is like the rectangle color scheme, but the four colors are evenly spaced on the color wheel.



4292458149



4289447082



4288267477



4291737296

# Rectangle

The Rectangle color scheme consists of four colors that form a rectangle on the color wheel.



4292458149



4290952863



4288267477



4290100443

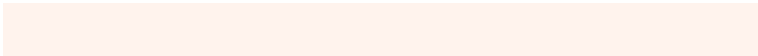


# Sweetspot

The Sweet Spot groups the original color and five complimentary colors.



4292458149



4294964205



4292453833



4286609781



4278190080



4286611584



# Same Dimension

The Same Dimension uses a secret algorithm to generate beautiful new colors.



4292458149



4294954421



4292464549



4285425251



4289542400



4281208576

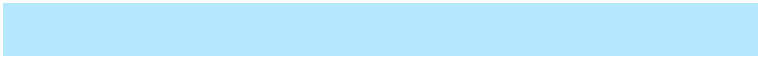


# Inverse Universe

The Inverse Universe completely reimagines the original color for something new.



4289054937



4290111487



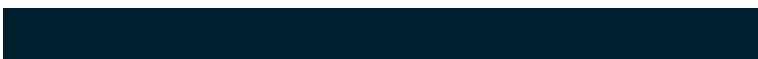
4289048537



4284705390



4278220205

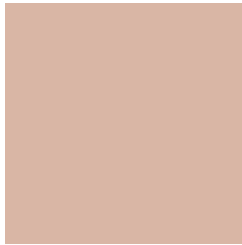


4278198062



# Previews

## White Background



This preview shows how the Android color 4292458149 looks on a white background.

## Color Contrast Check

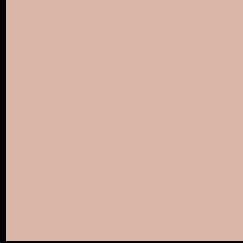
Large Text (above 18pt) WCAG AA × Fail

Any Text WCAG AA × Fail

Large Text (above 18pt) WCAG AAA × Fail

Any Text WCAG AAA × Fail

# Black Background



This preview shows how the Android color 4292458149 looks on a black background.

## Color Contrast Check

Large Text (above 18pt) WCAG AA ✓ Pass

Any Text WCAG AA ✓ Pass

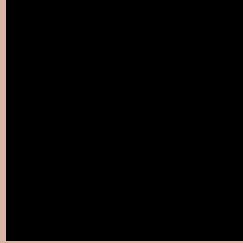
Large Text (above 18pt) WCAG AAA ✓ Pass

Any Text WCAG AAA ✓ Pass

If you want to check with other color combinations, try the [Color Contrast Checker](#).



# Android 4292458149 Background



This preview shows how black text looks on a background with the Android color 4292458149.



This preview shows how white text looks on a background with the Android color 4292458149.

# Color Blindness Simulation

Color vision deficiency is a very complex topic, and I could not describe the different causes any better than Wikipedia does, so if you want to learn more, you should check out their [article about color blindness](#).

## Dichromacy





**Tritanopia**  
4292653760

# Trichromacy



**Original Color**  
4292458149

**Protanomaly**  
4291672743

**Deuteranomaly**  
4292392613

**Tritanomaly**  
4292588470

# Monochromacy



**Original Color**  
4292458149

**Achromatopsia**  
4290756543

**Achromatomaly**  
4291345590

# CSS Examples

## Text

The CSS property to change the color of the text to Android 4292458149 is called "color". The color property can be set on classes, ids or directly on the HTML element.

This example shows how text in the color `rgb(217, 182, 165)` looks like.

```
.text, #text, p{  
    color:rgb(217, 182, 165)  
}
```

If you want to add a text shadow in that color use the text-shadow property, you can generate a text shadow directly with our [CSS Text Shadow Generator](#).

Here you see how black text with a 4 pixel rgb(217, 182, 165) colored shadow looks like.

```
.shadow{ text-shadow: 4px 4px 2px rgb(217, 182, 165) }
```

## Border

The CSS property to change the border of an element to Android 4292458149 is called "border". The border property can be set on classes, ids or directly on the HTML element.

This example shows the color as border, it can be applied via the CSS property "border" or "border-color".

```
.border, #border, table{ border:4px solid rgb(217, 182, 165) }
```

If only the border color should be changed use the property `border-color`.

```
.border{ border-color:rgb(217, 182, 165) }
```

If you want to add a box shadow in that color use:

Here you see how a box with a 4 pixel `rgb(217, 182, 165)` colored shadow looks like.

```
.boxshadow{ -moz-box-shadow:4px 4px 4px  
4px rgb(217, 182, 165); -webkit-box-  
shadow:4px 4px 4px 4px rgb(217, 182, 165);  
box-shadow:4px 4px 4px 4px rgb(217, 182,  
165) }
```

# Background

The CSS property to change the background color of an element to Android 4292458149 is called "background". The background property can be set on classes, ids or directly on the HTML element.

```
.background, #background, body{  
background: rgb(217, 182, 165) }
```

If only the background color should be changed can be used:

```
.background{ background-color: rgb(217,  
182, 165) }
```

This example shows the color as background, it is applied via the CSS property "background".

To optimize and compress your CSS code, you can use our [online CSS compressor and optimizer](#) based on csstidy. If you want to create a linear or radial gradient as background or border, check our [CSS Gradient Generator](#).



Hey! You found this booklet interesting? Support Converting Colors with the new Membership Option!

The pro membership hides all ads, plus gives you double the colors in the color bucket, and more awesome pro features!

**[Learn more, Memberships starting at \\$2.50/m!](#)**

**Follow me  
on Twitter!**

@ConvertingColor