

Converting Colors

Android(4292458155)

Have a look what the booklet for
Android(4292458155) contains.

Android(4292458155)	3
<i>Conversions</i>	4
<i>Details</i>	6
<i>Harmonies</i>	11
<i>Previews</i>	23
<i>Color Blindness Simulation</i>	26
<i>CSS Examples</i>	29

Color

Android(4292458155)

Conversions

Conversions Part 1

Format	Color
Hex	D9B6AB
RGB	217, 182, 171
RGB Percent	85%, 71%, 67%
CMY	0.1490, 0.2863, 0.3294
CMYK	0.00, 0.16, 0.21, 0.15
HSL	14°, 38%, 76%
HSV	14°, 21%, 85%
XYZ	52.6939, 51.1479, 45.6233
YIQ	191.2110, 24.3910, 3.9990

Conversions

Conversions Part 2

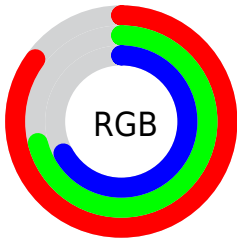
Format	Color
RYB	217, 185, 171
Decimal	14268075
CIELab	76.77, 10.89, 10.29
CIElCh	77, 14.976, 43.377
Yxy	51.1479, 0.3525, 0.3422
Android (android.graphics.Color)	4292458155 (0xFFD9B6AB)
YUV	191.2110, -9.9640, 22.6170
Hunter-Lab	71.5177, 6.3618, 12.2395

Details

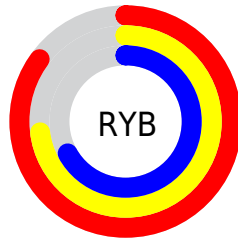
The Android color `4292458155` is a light color, and the websafe version is hex `CC9999`. A complement of this color would be `4289449689`, and the grayscale version is `4290756543`.

A 20% lighter version of the original color is `4294962914`, and `4288840055` is the 20% darker color. If you saturate the color by 10%, you get `4292453781`, and if you desaturate by 10%, it is `4292462529`.

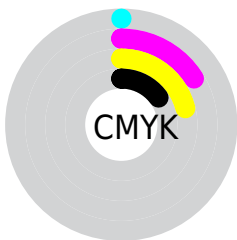
Distribution



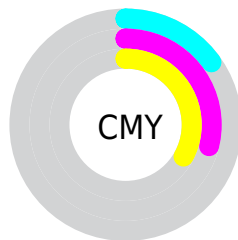
- Red (85%)
- Green (71%)
- Blue (67%)



- Red (85%)
- Yellow (73%)
- Blue (67%)



- Cyan (0%)
- Magenta (16%)
- Yellow (21%)
- Black (15%)



- Cyan (15%)
- Magenta (29%)
- Yellow (33%)

Brightness & Saturation Gradients

These gradients show how the Android color 4292458155 changes by changing the brightness by 10 percent. The first figure shows a shift by +10% for each color and the second figure -10%.

Similar to the brightness gradients but the following saturation gradients show a change of the Android color 4292458155 by changing the saturation by 10% instead.

 4292458155

 4292458155

4294967295

 4290616208

 4294962914

 4288840055

 4287064158

 4285354054

 4283709744

 4282131227

 4280749568

 4278190080

 4292458155

 4292458155

 4292453781

 4292462529

 4292449664

 4292466646

 4292445290

 4292471020

 4292441172

 4292475135

 4292436799

 4292476927

 4292432681

 4292428307

 4292424704

Harmonies

Analogous

The Analogous color harmony consists of three colors that are next to each other on the color wheel.



4292588728



4292458155



4291869347

Triad

The Triadic color harmony groups three colors that are evenly spaced from another and form a triangle on the color wheel.



4292458155



4288988597



4290166232

Complementary

The Complementary color scheme is a pair of colors which are on the opposite of each other on the color wheel.



4292458155



4289449689

Split Complementary

Split-complementary colors differ from the complementary color scheme. The scheme consists of three colors, the original color and two neighbors of the complement color.



4289118680



4292458155



4288399043

Square

The Square scheme is like the rectangle color scheme, but the four colors are evenly spaced on the color wheel.



4292458155



4289905321



4288398544



4291344594

Rectangle

The Rectangle color scheme consists of four colors that form a rectangle on the color wheel.



4292458155



4291280290



4288398544



4289773273

Sweetspot

The Sweet Spot groups the original color and five complimentary colors.



4292458155



4294964208



4292455374



4286609783



4278190080



4286611584

Same Dimension

The Same Dimension uses a secret algorithm to generate beautiful new colors.



4292458155



4294954687



4292464043



4285424995



4289538304



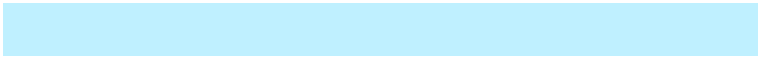
4281207552

Inverse Universe

The Inverse Universe completely reimagines the original color for something new.



4289449689



4290769151



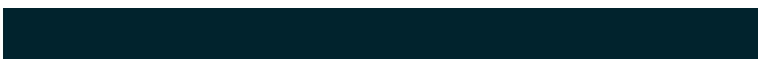
4289443801



4284705646



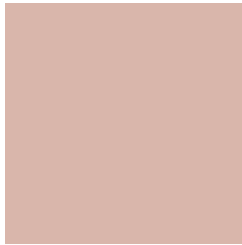
4278224045



4278199086

Previews

White Background



This preview shows how the Android color 4292458155 looks on a white background.

Color Contrast Check

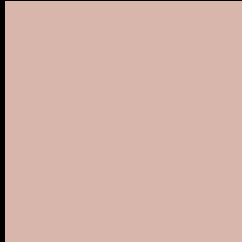
Large Text (above 18pt) WCAG AA × Fail

Any Text WCAG AA × Fail

Large Text (above 18pt) WCAG AAA × Fail

Any Text WCAG AAA × Fail

Black Background



This preview shows how the Android color 4292458155 looks on a black background.

Color Contrast Check

Large Text (above 18pt) WCAG AA ✓ Pass

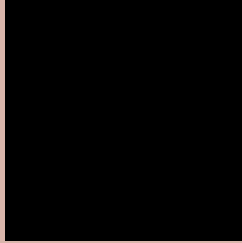
Any Text WCAG AA ✓ Pass

Large Text (above 18pt) WCAG AAA ✓ Pass

Any Text WCAG AAA ✓ Pass

If you want to check with other color combinations, try the [Color Contrast Checker](#).

Android 4292458155 Background



This preview shows how black text looks on a background with the Android color 4292458155.



This preview shows how white text looks on a background with the Android color 4292458155.

Color Blindness Simulation

Color vision deficiency is a very complex topic, and I could not describe the different causes any better than Wikipedia does, so if you want to learn more, you should check out their [article about color blindness](#).


Dichromacy



Original Color
[4292458155](#)

Protanopia
[4291149231](#)

Deuteranopia
[4292327339](#)



Tritanopia
4292654017

Trichromacy



Original Color
4292458155

Protanomaly
4291607214

Deuteranomaly
4292392875

Tritanomaly
4292588729

Monochromacy



Original Color
4292458155

Achromatopsia
4290756543

Achromatomaly
4291345592

CSS Examples

Text

The CSS property to change the color of the text to Android 4292458155 is called "color". The color property can be set on classes, ids or directly on the HTML element.

This example shows how text in the color `rgb(217, 182, 171)` looks like.

```
.text, #text, p{  
    color:rgb(217, 182, 171)  
}
```

If you want to add a text shadow in that color use the text-shadow property, you can generate a text shadow directly with our [CSS Text Shadow Generator](#).

Here you see how black text with a 4 pixel rgb(217, 182, 171) colored shadow looks like.

```
.shadow{ text-shadow: 4px 4px 2px rgb(217, 182, 171) }
```

Border

The CSS property to change the border of an element to Android 4292458155 is called "border". The border property can be set on classes, ids or directly on the HTML element.

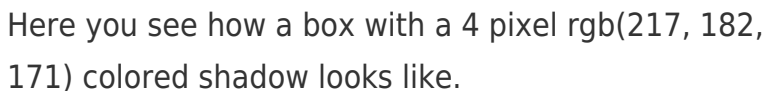
This example shows the color as border, it can be applied via the CSS property "border" or "border-color".

```
.border, #border, table{ border:4px solid rgb(217, 182, 171) }
```

If only the border color should be changed use the property `border-color`.

```
.border{ border-color:rgb(217, 182, 171) }
```

If you want to add a box shadow in that color use:



Here you see how a box with a 4 pixel `rgb(217, 182, 171)` colored shadow looks like.

```
.boxshadow{ -moz-box-shadow:4px 4px 4px 4px rgb(217, 182, 171); -webkit-box-shadow:4px 4px 4px 4px rgb(217, 182, 171); box-shadow:4px 4px 4px 4px rgb(217, 182, 171) }
```

Background

The CSS property to change the background color of an element to Android 4292458155 is called "background". The background property can be set on classes, ids or directly on the HTML element.

```
.background, #background, body{  
background: rgb(217, 182, 171) }
```

If only the background color should be changed can be used:

```
.background{ background-color: rgb(217,  
182, 171) }
```

This example shows the color as background, it is applied via the CSS property "background".

To optimize and compress your CSS code, you can use our [online CSS compressor and optimizer](#) based on csstidy. If you want to create a linear or radial gradient as background or border, check our [CSS Gradient Generator](#).

Hey! You found this booklet interesting? Support Converting Colors with the new Membership Option!

The pro membership hides all ads, plus gives you double the colors in the color bucket, and more awesome pro features!

[Learn more, Memberships starting at \\$2.50/m!](#)

**Follow me
on Twitter!**

@ConvertingColor