

Converting Colors

Android(4292459421)

Have a look what the booklet for
Android(4292459421) contains.

Android(4292459421)	3
<i>Conversions</i>	4
<i>Details</i>	6
<i>Harmonies</i>	11
<i>Previews</i>	23
<i>Color Blindness Simulation</i>	26
<i>CSS Examples</i>	29

Color

Android(4292459421)

Conversions

Conversions Part 1

Format	Color
Hex	D9BB9D
RGB	217, 187, 157
RGB Percent	85%, 73%, 62%
CMY	0.1490, 0.2667, 0.3843
CMYK	0.00, 0.14, 0.28, 0.15
HSL	30°, 44%, 73%
HSV	30°, 28%, 85%
XYZ	52.4714, 52.7267, 39.3100
YIQ	192.5500, 27.5100, -2.9700

Conversions

Conversions Part 2

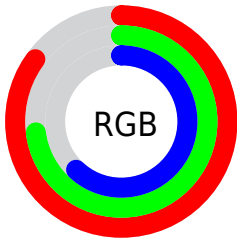
Format	Color
R_{YB}	217, 217, 157
Decimal	14269341
CIE Lab	77.71, 6.23, 19.16
CIE LCh	78, 20.152, 71.980
Yxy	52.7267, 0.3631, 0.3649
Android (android.graphics.Color)	4292459421 (0xFFD9BB9D)
YUV	192.5500, -17.5261, 21.4427
Hunter-Lab	72.6131, 1.9139, 18.7318

Details

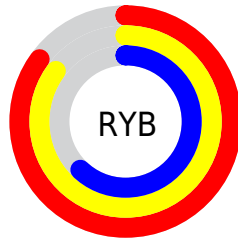
The Android color `4292459421` is a light color, and the websafe version is hex `FFCC99`. A complement of this color would be `4288527321`, and the grayscale version is `4290888129`.

A 20% lighter version of the original color is `4294964180`, and `4288775786` is the 20% darker color. If you saturate the color by 10%, you get `4292456583`, and if you desaturate by 10%, it is `4292462259`.

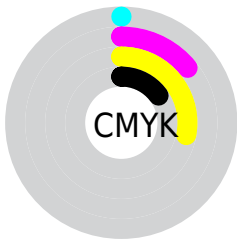
Distribution



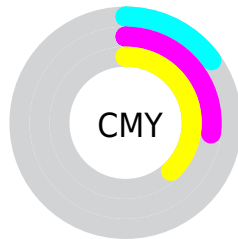
- Red (85%)
- Green (73%)
- Blue (62%)



- Red (85%)
- Yellow (85%)
- Blue (62%)



- Cyan (0%)
- Magenta (14%)
- Yellow (28%)
- Black (15%)



- Cyan (15%)
- Magenta (27%)
- Yellow (38%)

Brightness & Saturation Gradients

These gradients show how the Android color 4292459421 changes by changing the brightness by 10 percent. The first figure shows a shift by +10% for each color and the second figure -10%.

Similar to the brightness gradients but the following saturation gradients show a change of the Android color 4292459421 by changing the saturation by 10% instead.



4292459421



4292459421

4294967295



4290617475



4294964180



4288775786



4294967280



4287065425



4285355066



4283645220



4282066703



4280619776



4278190080



4292459421



4292459421

 4292456583

 4292462259

 4292453746

 4292465096

 4292450908

 4292467934

 4292448326

 4292470516

 4292445489

 4292473343

 4292442651

 4292476159

 4292439813

 4292476927

 4292439040

Harmonies

Analogous

The Analogous color harmony consists of three colors that are next to each other on the color wheel.



4293244584



4292459421



4291281308

Triad

The Triadic color harmony groups three colors that are evenly spaced from another and form a triangle on the color wheel.



4292459421



4287679431



4291672540

Complementary

The Complementary color scheme is a pair of colors which are on the opposite of each other on the color wheel.



4292459421



4288527321

Split Complementary

Split-complementary colors differ from the complementary color scheme. The scheme consists of three colors, the original color and two neighbors of the complement color.



4290101220



4292459421



4287613400

Square

The Square scheme is like the rectangle color scheme, but the four colors are evenly spaced on the color wheel.



4292459421



4288531124



4288529891



4292850892

Rectangle

The Rectangle color scheme consists of four colors that form a rectangle on the color wheel.



4292459421



4290364832



4288529891



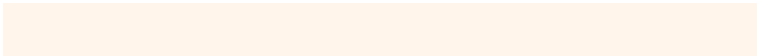
4291148768

Sweetspot

The Sweet Spot groups the original color and five complimentary colors.



4292459421



4294964715



4292451771



4286609779



4278190080



4286611584

Same Dimension

The Same Dimension uses a secret algorithm to generate beautiful new colors.



4292459421



4294956459



4292466845



4285425763



4289550080



4281210624

Inverse Universe

The Inverse Universe completely reimagines the original color for something new.



4288527321



4289451519



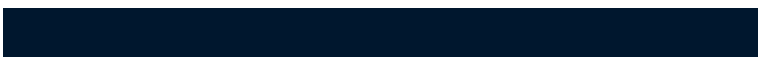
4288519641



4284704878



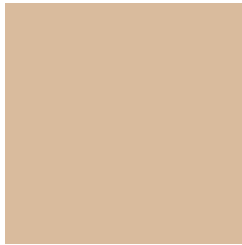
4278212525



4278196014

Previews

White Background



This preview shows how the Android color 4292459421 looks on a white background.

Color Contrast Check

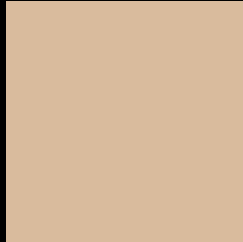
Large Text (above 18pt) WCAG AA × Fail

Any Text WCAG AA × Fail

Large Text (above 18pt) WCAG AAA × Fail

Any Text WCAG AAA × Fail

Black Background



This preview shows how the Android color 4292459421 looks on a black background.

Color Contrast Check

Large Text (above 18pt) WCAG AA ✓ Pass

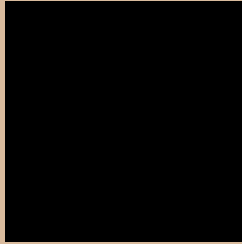
Any Text WCAG AA ✓ Pass

Large Text (above 18pt) WCAG AAA ✓ Pass

Any Text WCAG AAA ✓ Pass

If you want to check with other color combinations, try the [Color Contrast Checker](#).

Android 4292459421 Background



This preview shows how black text looks on a background with the Android color 4292459421.



This preview shows how white text looks on a background with the Android color 4292459421.

Color Blindness Simulation

Color vision deficiency is a very complex topic, and I could not describe the different causes any better than Wikipedia does, so if you want to learn more, you should check out their [article about color blindness](#).

Dichromacy



Original Color
4292459421

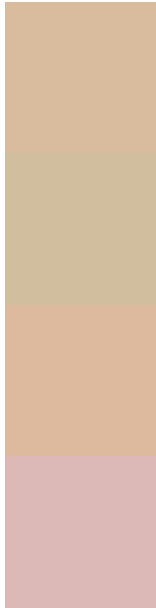
Protanopia
4291543199

Deuteranopia
4292852125



Tritanopia
4292720324

Trichromacy



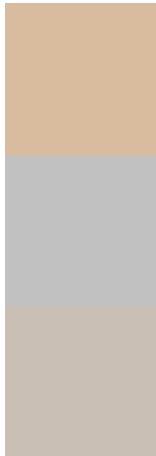
Original Color
4292459421

Protanomaly
4291870366

Deuteranomaly
4292721309

Tritanomaly
4292655286

Monochromacy



Original Color
4292459421

Achromatopsia
4290888129

Achromatomaly
4291477428

CSS Examples

Text

The CSS property to change the color of the text to Android 4292459421 is called "color". The color property can be set on classes, ids or directly on the HTML element.

This example shows how text in the color `rgb(217, 187, 157)` looks like.

```
.text, #text, p{  
    color:rgb(217, 187, 157)  
}
```

If you want to add a text shadow in that color use the text-shadow property, you can generate a text shadow directly with our [CSS Text Shadow Generator](#).

Here you see how black text with a 4 pixel rgb(217, 187, 157) colored shadow looks like.

```
.shadow{ text-shadow: 4px 4px 2px rgb(217, 187, 157) }
```

Border

The CSS property to change the border of an element to Android 4292459421 is called "border". The border property can be set on classes, ids or directly on the HTML element.

This example shows the color as border, it can be applied via the CSS property "border" or "border-color".

```
.border, #border, table{ border:4px solid rgb(217, 187, 157) }
```

If only the border color should be changed use the property `border-color`.

```
.border{ border-color:rgb(217, 187, 157) }
```

If you want to add a box shadow in that color use:

Here you see how a box with a 4 pixel `rgb(217, 187, 157)` colored shadow looks like.

```
.boxshadow{ -moz-box-shadow:4px 4px 4px  
4px rgb(217, 187, 157); -webkit-box-  
shadow:4px 4px 4px 4px rgb(217, 187, 157);  
box-shadow:4px 4px 4px 4px rgb(217, 187,  
157) }
```

Background

The CSS property to change the background color of an element to Android 4292459421 is called "background". The background property can be set on classes, ids or directly on the HTML element.

```
.background, #background, body{  
background: rgb(217, 187, 157) }
```

If only the background color should be changed can be used:

```
.background{ background-color: rgb(217,  
187, 157) }
```

This example shows the color as background, it is applied via the CSS property "background".

To optimize and compress your CSS code, you can use our [online CSS compressor and optimizer](#) based on csstidy. If you want to create a linear or radial gradient as background or border, check our [CSS Gradient Generator](#).

Hey! You found this booklet interesting? Support Converting Colors with the new Membership Option!

The pro membership hides all ads, plus gives you double the colors in the color bucket, and more awesome pro features!

[Learn more, Memberships starting at \\$2.50/m!](#)

**Follow me
on Twitter!**

@ConvertingColor