

Converting Colors

Android(4292459715)

Have a look what the booklet for
Android(4292459715) contains.

Android(4292459715)	3
<i>Conversions</i>	4
<i>Details</i>	6
<i>Harmonies</i>	11
<i>Previews</i>	23
<i>Color Blindness Simulation</i>	26
<i>CSS Examples</i>	29

Color

Android(4292459715)

Conversions

Conversions Part 1

Format	Color
Hex	D9BCC3
RGB	217, 188, 195
RGB Percent	85%, 74%, 76%
CMY	0.1490, 0.2627, 0.2353
CMYK	0.00, 0.13, 0.10, 0.15
HSL	346°, 28%, 79%
HSV	346°, 13%, 85%
XYZ	56.4488, 54.6583, 59.2047
YIQ	197.4690, 15.0370, 8.3250

Conversions

Conversions Part 2

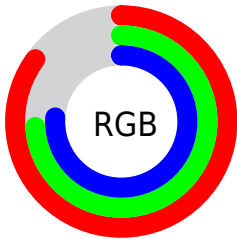
Format	Color
RYB	217, 188, 195
Decimal	14269635
CIELab	78.84, 11.47, 0.28
CIELCh	79, 11.476, 1.415
Yxy	54.6583, 0.3314, 0.3209
Android (android.graphics.Color)	4292459715 (0xFFD9BCC3)
YUV	197.4690, -1.2172, 17.1287
Hunter-Lab	73.9312, 6.9107, 4.2720

Details

The Android color `4292459715` is a light color, and the websafe version is hex `CCCCCC`. A complement of this color would be `4290566610`, and the grayscale version is `4291151301`.

A 20% lighter version of the original color is `4294964476`, and `4288841613` is the 20% darker color. If you saturate the color by 10%, you get `4292454067`, and if you desaturate by 10%, it is `4292465363`.

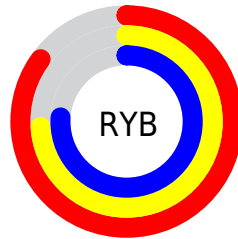
Distribution



Red (85%)

Green (74%)

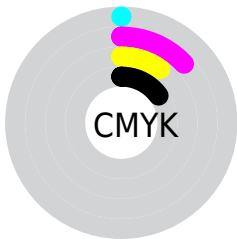
Blue (76%)



Red (85%)

Yellow (74%)

Blue (76%)

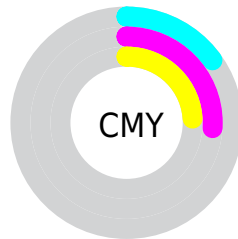


Cyan (0%)

Magenta (13%)

Yellow (10%)

Black (15%)



Cyan (15%)

Magenta (26%)

Yellow (24%)

Brightness & Saturation Gradients

These gradients show how the Android color 4292459715 changes by changing the brightness by 10 percent. The first figure shows a shift by +10% for each color and the second figure -10%.

Similar to the brightness gradients but the following saturation gradients show a change of the Android color 4292459715 by changing the saturation by 10% instead.



4292459715



4292459715

4294967295



4290617768



4294964476



4288841613



4287130996



4285420891



4283776580



4282263598



4280750873



4279238656



4278190080

 4292459715

 4292459715

 4292454067

 4292465363

 4292448674

 4292470756

 4292443026

 4292476404

 4292437377

 4292476927

 4292431985

 4292426336

 4292420688

 4292415039

 4292411444

Harmonies

Analogous

The Analogous color harmony consists of three colors that are next to each other on the color wheel.



4292001230



4292459715



4292525496

Triad

The Triadic color harmony groups three colors that are evenly spaced from another and form a triangle on the color wheel.



4292459715



4290758321



4289644502

Complementary

The Complementary color scheme is a pair of colors which are on the opposite of each other on the color wheel.



4292459715



4290566610

Split Complementary

Split-complementary colors differ from the complementary color scheme. The scheme consists of three colors, the original color and two neighbors of the complement color.



4289317326



4292459715



4290037945

Square

The Square scheme is like the rectangle color scheme, but the four colors are evenly spaced on the color wheel.



4292459715



4291609518



4289448643



4290364632

Rectangle

The Rectangle color scheme consists of four colors that form a rectangle on the color wheel.



4292459715



4292329139



4289448643



4289448147

Sweetspot

The Sweet Spot groups the original color and five complimentary colors.



4292459715



4294964727



4292000985



4286609787



4278190080



4286611584

Same Dimension

The Same Dimension uses a secret algorithm to generate beautiful new colors.



4292459715



4294956768



4292461500



4285424485



4289527850



4281204747

Inverse Universe

The Inverse Universe completely reimagines the original color for something new.



4292459715



4294956768



4290564825



4285424485



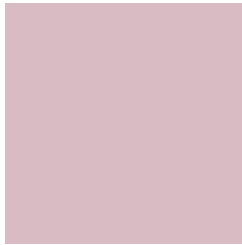
4289527850



4281204747

Previews

White Background



This preview shows how the Android color 4292459715 looks on a white background.

Color Contrast Check

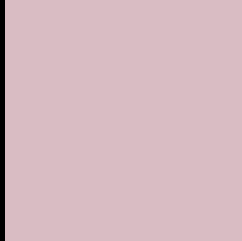
Large Text (above 18pt) WCAG AA × Fail

Any Text WCAG AA × Fail

Large Text (above 18pt) WCAG AAA × Fail

Any Text WCAG AAA × Fail

Black Background



This preview shows how the Android color 4292459715 looks on a black background.

Color Contrast Check

Large Text (above 18pt) WCAG AA ✓ Pass

Any Text WCAG AA ✓ Pass

Large Text (above 18pt) WCAG AAA ✓ Pass

Any Text WCAG AAA ✓ Pass

If you want to check with other color combinations, try the [Color Contrast Checker](#).

Android 4292459715 Background



This preview shows how black text looks on a background with the Android color 4292459715.




This preview shows how white text looks on a background with the Android color 4292459715.

Color Blindness Simulation

Color vision deficiency is a very complex topic, and I could not describe the different causes any better than Wikipedia does, so if you want to learn more, you should check out their [article about color blindness](#).

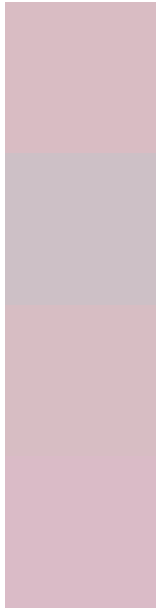
Dichromacy

	Original Color 4292459715
	Protanopia 4291216071
	Deuteranopia 4292263363



Tritanopia
4292525002

Trichromacy



Original Color
4292459715

Protanomaly
4291674310

Deuteranomaly
4292328899

Tritanomaly
4292524999

Monochromacy



Original Color
4292459715

Achromatopsia
4291151301

Achromatomaly
4291609284

CSS Examples

Text

The CSS property to change the color of the text to Android 4292459715 is called "color". The color property can be set on classes, ids or directly on the HTML element.

This example shows how text in the color `rgb(217, 188, 195)` looks like.

```
.text, #text, p{  
    color:rgb(217, 188, 195)  
}
```

If you want to add a text shadow in that color use the text-shadow property, you can generate a text shadow directly with our [CSS Text Shadow Generator](#).

Here you see how black text with a 4 pixel rgb(217, 188, 195) colored shadow looks like.

```
.shadow{ text-shadow: 4px 4px 2px rgb(217, 188, 195) }
```

Border

The CSS property to change the border of an element to Android 4292459715 is called "border". The border property can be set on classes, ids or directly on the HTML element.

This example shows the color as border, it can be applied via the CSS property "border" or "border-color".

```
.border, #border, table{ border:4px solid rgb(217, 188, 195) }
```

If only the border color should be changed use the property `border-color`.

```
.border{ border-color:rgb(217, 188, 195) }
```

If you want to add a box shadow in that color use:

Here you see how a box with a 4 pixel `rgb(217, 188, 195)` colored shadow looks like.

```
.boxshadow{ -moz-box-shadow:4px 4px 4px  
4px rgb(217, 188, 195); -webkit-box-  
shadow:4px 4px 4px 4px rgb(217, 188, 195);  
box-shadow:4px 4px 4px 4px rgb(217, 188,  
195) }
```

Background

The CSS property to change the background color of an element to Android 4292459715 is called "background". The background property can be set on classes, ids or directly on the HTML element.

```
.background, #background, body{  
background: rgb(217, 188, 195) }
```

If only the background color should be changed can be used:

```
.background{ background-color: rgb(217,  
188, 195) }
```

This example shows the color as background, it is applied via the CSS property "background".

To optimize and compress your CSS code, you can use our [online CSS compressor and optimizer](#) based on csstidy. If you want to create a linear or radial gradient as background or border, check our [CSS Gradient Generator](#).

Hey! You found this booklet interesting? Support Converting Colors with the new Membership Option!

The pro membership hides all ads, plus gives you double the colors in the color bucket, and more awesome pro features!

[Learn more, Memberships starting at \\$2.50/m!](#)

**Follow me
on Twitter!**

@ConvertingColor