

Converting Colors

Android(4292460485)

Have a look what the booklet for
Android(4292460485) contains.

| | |
|--|----|
| Android(4292460485) | 3 |
| <i>Conversions</i> | 4 |
| <i>Details</i> | 6 |
| <i>Harmonies</i> | 11 |
| <i>Previews</i> | 23 |
| <i>Color Blindness Simulation</i> | 26 |
| <i>CSS Examples</i> | 29 |

Color

Android(4292460485)

Conversions

Conversions Part 1

| Format | Color |
|---------------|---------------------------|
| Hex | D9BFC5 |
| RGB | 217, 191, 197 |
| RGB Percent | 85%, 75%, 77% |
| CMY | 0.1490, 0.2510, 0.2275 |
| CMYK | 0.00, 0.12, 0.09, 0.15 |
| HSL | 346°, 25%, 80% |
| HSV | 346°, 12%, 85% |
| XYZ | 57.3241, 56.0445, 60.6197 |
| YIQ | 199.4580, 13.5700, 7.3780 |

Conversions

Conversions Part 2

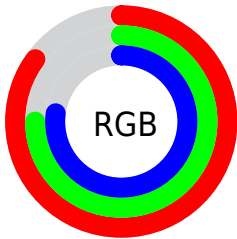
| Format | Color |
|-------------------------------------|-------------------------------|
| R_{YB} | 217, 191, 197 |
| Decimal | 14270405 |
| CIE _{Lab} | 79.64, 10.21, 0.36 |
| CIE _{LCh} | 80, 10.213, 2.043 |
| Yxy | 56.0445, 0.3295, 0.3221 |
| Android (android.graphics.Color) | 4292460485 (0xFFD9BFC5) |
| YUV | 199.4580, -1.2118, 15.3843 |
| Hunter-Lab | 74.8629, 5.6712, 4.3944 |

Details

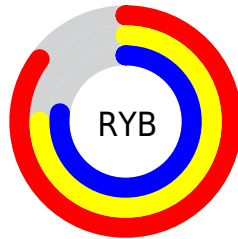
The Android color `4292460485` is a light color, and the websafe version is hex `CCCCCC`. A complement of this color would be `4290763219`, and the grayscale version is `4291282887`.

A 20% lighter version of the original color is `4294965246`, and `4288842383` is the 20% darker color. If you saturate the color by 10%, you get `4292454836`, and if you desaturate by 10%, it is `4292466134`.

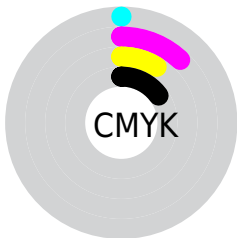
Distribution



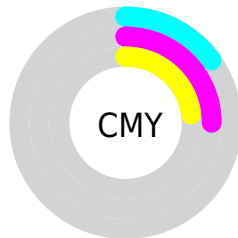
- Red (85%)
- Green (75%)
- Blue (77%)



- Red (85%)
- Yellow (75%)
- Blue (77%)



- Cyan (0%)
- Magenta (12%)
- Yellow (9%)
- Black (15%)



- Cyan (15%)
- Magenta (25%)
- Yellow (23%)

Brightness & Saturation Gradients

These gradients show how the Android color 4292460485 changes by changing the brightness by 10 percent. The first figure shows a shift by +10% for each color and the second figure -10%.

Similar to the brightness gradients but the following saturation gradients show a change of the Android color 4292460485 by changing the saturation by 10% instead.



4292460485



4292460485

4294967295



4290618538



4294965246



4288842383



4287131766



4285421661



4283842630



4282264111



4280817179



4279500800



4278190080

 4292460485

 4292460485

 4292454836

 4292466134

 4292449444

 4292471526

 4292443795

 4292476919

 4292438146

 4292476927

 4292432498

 4292427105

 4292421456

 4292415807

 4292411442

Harmonies

Analogous

The Analogous color harmony consists of three colors that are next to each other on the color wheel.



4292067534



4292460485



4292526268

Triad

The Triadic color harmony groups three colors that are evenly spaced from another and form a triangle on the color wheel.



4292460485



4290955445



4289972694

Complementary

The Complementary color scheme is a pair of colors which are on the opposite of each other on the color wheel.



4292460485



4290763219

Split Complementary

Split-complementary colors differ from the complementary color scheme. The scheme consists of three colors, the original color and two neighbors of the complement color.



4289645519



4292460485



4290235068

Square

The Square scheme is like the rectangle color scheme, but the four colors are evenly spaced on the color wheel.



4292460485



4291675570



4289776582



4290561752

Rectangle

The Rectangle color scheme consists of four colors that form a rectangle on the color wheel.



4292460485



4292329911



4289776582



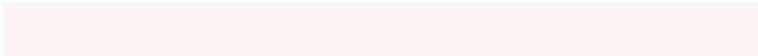
4289776340

Sweetspot

The Sweet Spot groups the original color and five complimentary colors.



4292460485



4294964727



4292067289



4286609787



4278190080



4286611584

Same Dimension

The Same Dimension uses a secret algorithm to generate beautiful new colors.



4292460485



4294958052



4292462271



4285424485



4289527848



4281204747

Inverse Universe

The Inverse Universe completely reimagines the original color for something new.



4292460485



4294958052



4290761433



4285424485



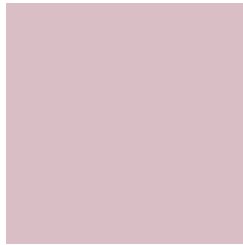
4289527848



4281204747

Previews

White Background



This preview shows how the Android color 4292460485 looks on a white background.

Color Contrast Check

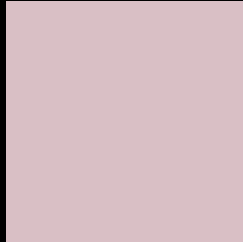
Large Text (above 18pt) WCAG AA × Fail

Any Text WCAG AA × Fail

Large Text (above 18pt) WCAG AAA × Fail

Any Text WCAG AAA × Fail

Black Background



This preview shows how the Android color 4292460485 looks on a black background.

Color Contrast Check

Large Text (above 18pt) WCAG AA ✓ Pass

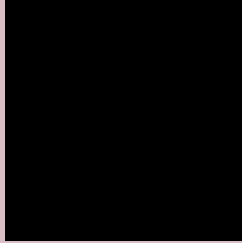
Any Text WCAG AA ✓ Pass

Large Text (above 18pt) WCAG AAA ✓ Pass

Any Text WCAG AAA ✓ Pass

If you want to check with other color combinations, try the [Color Contrast Checker](#).

Android 4292460485 Background



This preview shows how black text looks on a background with the Android color 4292460485.

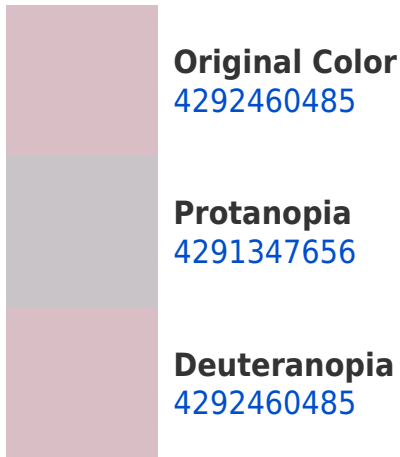



This preview shows how white text looks on a background with the Android color 4292460485.

Color Blindness Simulation

Color vision deficiency is a very complex topic, and I could not describe the different causes any better than Wikipedia does, so if you want to learn more, you should check out their [article about color blindness](#).

Dichromacy





Tritanopia
4292525773

Trichromacy



Original Color

4292460485

Protanomaly

4291740359

Deuteranomaly

4292460485

Tritanomaly

4292525770

Monochromacy



Original Color

4292460485

Achromatopsia

4291282887

Achromatomaly

4291740870

CSS Examples

Text

The CSS property to change the color of the text to Android 4292460485 is called "color". The color property can be set on classes, ids or directly on the HTML element.

This example shows how text in the color `rgb(217, 191, 197)` looks like.

```
.text, #text, p{  
    color:rgb(217, 191, 197)  
}
```

If you want to add a text shadow in that color use the text-shadow property, you can generate a text shadow directly with our [CSS Text Shadow Generator](#).

Here you see how black text with a 4 pixel rgb(217, 191, 197) colored shadow looks like.

```
.shadow{ text-shadow: 4px 4px 2px rgb(217, 191, 197) }
```

Border

The CSS property to change the border of an element to Android 4292460485 is called "border". The border property can be set on classes, ids or directly on the HTML element.

This example shows the color as border, it can be applied via the CSS property "border" or "border-color".

```
.border, #border, table{ border:4px solid rgb(217, 191, 197) }
```

If only the border color should be changed use the property `border-color`.

```
.border{ border-color:rgb(217, 191, 197) }
```

If you want to add a box shadow in that color use:

Here you see how a box with a 4 pixel `rgb(217, 191, 197)` colored shadow looks like.

```
.boxshadow{ -moz-box-shadow:4px 4px 4px 4px rgb(217, 191, 197); -webkit-box-shadow:4px 4px 4px 4px rgb(217, 191, 197); box-shadow:4px 4px 4px 4px rgb(217, 191, 197) }
```

Background

The CSS property to change the background color of an element to Android 4292460485 is called "background". The background property can be set on classes, ids or directly on the HTML element.

```
.background, #background, body{  
background: rgb(217, 191, 197) }
```

If only the background color should be changed can be used:

```
.background{ background-color: rgb(217,  
191, 197) }
```

This example shows the color as background, it is applied via the CSS property "background".

To optimize and compress your CSS code, you can use our [online CSS compressor and optimizer](#) based on csstidy. If you want to create a linear or radial gradient as background or border, check our [CSS Gradient Generator](#).

Hey! You found this booklet interesting? Support Converting Colors with the new Membership Option!

The pro membership hides all ads, plus gives you double the colors in the color bucket, and more awesome pro features!

[Learn more, Memberships starting at \\$2.50/m!](#)

**Follow me
on Twitter!**

@ConvertingColor