

Converting Colors

Android(4292460732)

Have a look what the booklet for
Android(4292460732) contains.

Android(4292460732)	3
<i>Conversions</i>	4
<i>Details</i>	6
<i>Harmonies</i>	11
<i>Previews</i>	23
<i>Color Blindness Simulation</i>	26
<i>CSS Examples</i>	29

Color

Android(4292460732)

Conversions

Conversions Part 1

Format	Color
Hex	D9C0BC
RGB	217, 192, 188
RGB Percent	85%, 75%, 74%
CMY	0.1490, 0.2471, 0.2627
CMYK	0.00, 0.12, 0.13, 0.15
HSL	8°, 28%, 79%
HSV	8°, 13%, 85%
XYZ	56.5420, 56.0818, 55.4217
YIQ	199.0190, 16.1840, 4.0560

Conversions

Conversions Part 2

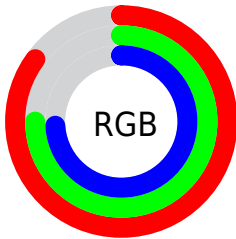
Format	Color
R _{YB}	217, 193, 188
Decimal	14270652
CIE Lab	79.66, 8.19, 5.24
CIE LCh	80, 9.721, 32.649
Yxy	56.0818, 0.3365, 0.3337
Android (android.graphics.Color)	4292460732 (0xFFD9C0BC)
YUV	199.0190, -5.4324, 15.7693
Hunter-Lab	74.8878, 3.7179, 8.5431

Details

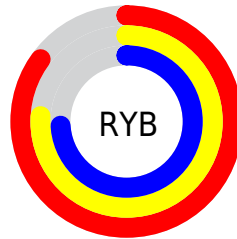
The Android color `4292460732` is a light color, and the websafe version is hex `CCCCCC`. A complement of this color would be `4290565593`, and the grayscale version is `4291282887`.

A 20% lighter version of the original color is `4294965492`, and `4288842631` is the 20% darker color. If you saturate the color by 10%, you get `4292455846`, and if you desaturate by 10%, it is `4292465618`.

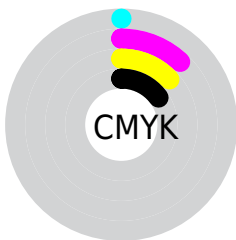
Distribution



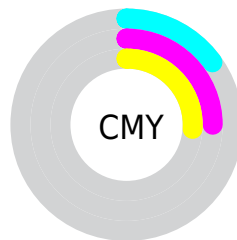
- Red (85%)
- Green (75%)
- Blue (74%)



- Red (85%)
- Yellow (76%)
- Blue (74%)



- Cyan (0%)
- Magenta (12%)
- Yellow (13%)
- Black (15%)



- Cyan (15%)
- Magenta (25%)
- Yellow (26%)

Brightness & Saturation Gradients

These gradients show how the Android color 4292460732 changes by changing the brightness by 10 percent. The first figure shows a shift by +10% for each color and the second figure -10%.

Similar to the brightness gradients but the following saturation gradients show a change of the Android color 4292460732 by changing the saturation by 10% instead.

 4292460732

 4292460732

4294967295

 4290618785

 4294965492

 4288842631

 4287132014

 4285421909

 4283777342

 4282264360

 4280751636

 4279238656

 4278190080

 4292460732

 4292460732

 4292455846

 4292465618

 4292451217

 4292470247

 4292446331

 4292475133

 4292441445

 4292476927

 4292436560

 4292431930

 4292427044

 4292422158

 4292419072

Harmonies

Analogous

The Analogous color harmony consists of three colors that are next to each other on the color wheel.



4292394949



4292460732



4292199094

Triad

The Triadic color harmony groups three colors that are evenly spaced from another and form a triangle on the color wheel.



4292460732



4290300605



4290627287

Complementary

The Complementary color scheme is a pair of colors which are on the opposite of each other on the color wheel.



4292460732



4290565593

Split Complementary

Split-complementary colors differ from the complementary color scheme. The scheme consists of three colors, the original color and two neighbors of the complement color.



4290038229



4292460732



4289842118

Square

The Square scheme is like the rectangle color scheme, but the four colors are evenly spaced on the color wheel.



4292460732



4290955446



4289710799



4291347413

Rectangle

The Rectangle color scheme consists of four colors that form a rectangle on the color wheel.



4292460732



4291806388



4289710799



4290430935

Sweetspot

The Sweet Spot groups the original color and five complimentary colors.



4292460732



4294964981



4292459733



4286610041



4278190080



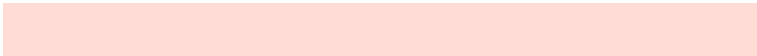
4286611584

Same Dimension

The Same Dimension uses a secret algorithm to generate beautiful new colors.



4292460732



4294958294



4292464316



4285424739



4289533952



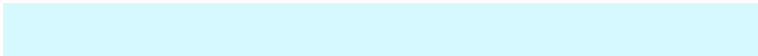
4281206272

Inverse Universe

The Inverse Universe completely reimagines the original color for something new.



4290565593



4292278783



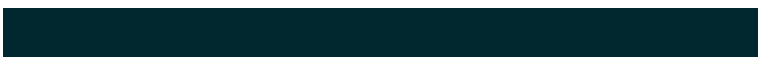
4290562009



4284705902



4278228397



4278200366

Previews

White Background



This preview shows how the Android color 4292460732 looks on a white background.

Color Contrast Check

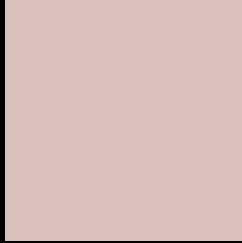
Large Text (above 18pt) WCAG AA × Fail

Any Text WCAG AA × Fail

Large Text (above 18pt) WCAG AAA × Fail

Any Text WCAG AAA × Fail

Black Background



This preview shows how the Android color 4292460732 looks on a black background.

Color Contrast Check

Large Text (above 18pt) WCAG AA ✓ Pass

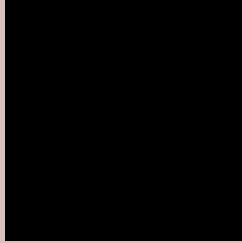
Any Text WCAG AA ✓ Pass

Large Text (above 18pt) WCAG AAA ✓ Pass

Any Text WCAG AAA ✓ Pass

If you want to check with other color combinations, try the [Color Contrast Checker](#).

Android 4292460732 Background



This preview shows how black text looks on a background with the Android color 4292460732.



This preview shows how white text looks on a background with the Android color 4292460732.

Color Blindness Simulation

Color vision deficiency is a very complex topic, and I could not describe the different causes any better than Wikipedia does, so if you want to learn more, you should check out their [article about color blindness](#).

Dichromacy



Original Color
4292460732

Protanopia
4291544511

Deuteranopia
4292657084



Tritanopia
4292591308

Trichromacy



Original Color
4292460732

Protanomaly
4291871678

Deuteranomaly
4292591548

Tritanomaly
4292526022

Monochromacy



Original Color
4292460732

Achromatopsia
4291282887

Achromatomaly
4291740867

CSS Examples

Text

The CSS property to change the color of the text to Android 4292460732 is called "color". The color property can be set on classes, ids or directly on the HTML element.

This example shows how text in the color `rgb(217, 192, 188)` looks like.

```
.text, #text, p{  
    color:rgb(217, 192, 188)  
}
```

If you want to add a text shadow in that color use the text-shadow property, you can generate a text shadow directly with our [CSS Text Shadow Generator](#).

Here you see how black text with a 4 pixel rgb(217, 192, 188) colored shadow looks like.

```
.shadow{ text-shadow: 4px 4px 2px rgb(217, 192, 188) }
```

Border

The CSS property to change the border of an element to Android 4292460732 is called "border". The border property can be set on classes, ids or directly on the HTML element.

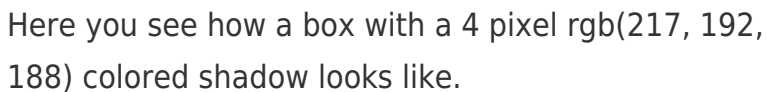
This example shows the color as border, it can be applied via the CSS property "border" or "border-color".

```
.border, #border, table{ border:4px solid rgb(217, 192, 188) }
```

If only the border color should be changed use the property `border-color`.

```
.border{ border-color:rgb(217, 192, 188) }
```

If you want to add a box shadow in that color use:



Here you see how a box with a 4 pixel `rgb(217, 192, 188)` colored shadow looks like.

```
.boxshadow{ -moz-box-shadow:4px 4px 4px 4px rgb(217, 192, 188); -webkit-box-shadow:4px 4px 4px 4px rgb(217, 192, 188); box-shadow:4px 4px 4px 4px rgb(217, 192, 188) }
```

Background

The CSS property to change the background color of an element to Android 4292460732 is called "background". The background property can be set on classes, ids or directly on the HTML element.

```
.background, #background, body{  
background: rgb(217, 192, 188) }
```

If only the background color should be changed can be used:

```
.background{ background-color: rgb(217,  
192, 188) }
```

This example shows the color as background, it is applied via the CSS property "background".

To optimize and compress your CSS code, you can use our [online CSS compressor and optimizer](#) based on csstidy. If you want to create a linear or radial gradient as background or border, check our [CSS Gradient Generator](#).

Hey! You found this booklet interesting? Support Converting Colors with the new Membership Option!

The pro membership hides all ads, plus gives you double the colors in the color bucket, and more awesome pro features!

[Learn more, Memberships starting at \\$2.50/m!](#)

**Follow me
on Twitter!**

@ConvertingColor