

# Converting Colors

Android(4292461747)

Have a look what the booklet for  
Android(4292461747) contains.

<b>Android(4292461747)</b> .....	3
<b><i>Conversions</i></b> .....	4
<b><i>Details</i></b> .....	6
<b><i>Harmonies</i></b> .....	11
<b><i>Previews</i></b> .....	23
<b><i>Color Blindness Simulation</i></b> .....	26
<b><i>CSS Examples</i></b> .....	29

# **Color**

**Android(4292461747)**

# Conversions

## Conversions Part 1

<b>Format</b>	<b>Color</b>
Hex	D9C4B3
RGB	217, 196, 179
RGB Percent	85%, 77%, 70%
CMY	0.1490, 0.2314, 0.2980
CMYK	0.00, 0.10, 0.18, 0.15
HSL	27°, 33%, 78%
HSV	27°, 18%, 85%
XYZ	56.4919, 57.4862, 50.7663
YIQ	200.3410, 17.9730, -0.8350

# Conversions

## Conversions Part 2

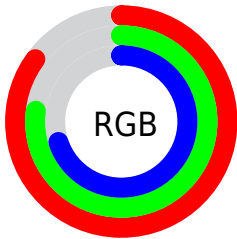
Format	Color
R <sub>Y</sub> B	217, 210, 179
Decimal	14271667
CIE Lab	80.45, 4.65, 11.21
CIE LCh	80, 12.138, 67.487
Yxy	57.4862, 0.3429, 0.3489
Android (android.graphics.Color)	4292461747 (0xFFD9C4B3)
YUV	200.3410, -10.5211, 14.6099
Hunter-Lab	75.8197, 0.3127, 13.3752

# Details

The Android color `4292461747` is a light color, and the websafe version is hex `CCCCCC`. A complement of this color would be `4289972441`, and the grayscale version is `4291348680`.

A 20% lighter version of the original color is `4294966763`, and `4288843390` is the 20% darker color. If you saturate the color by 10%, you get `4292458653`, and if you desaturate by 10%, it is `4292464841`.

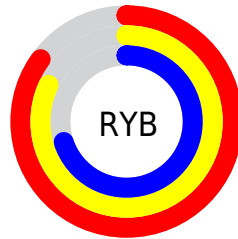
# Distribution



Red (85%)

Green (77%)

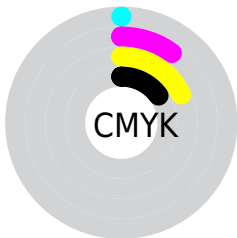
Blue (70%)



Red (85%)

Yellow (82%)

Blue (70%)

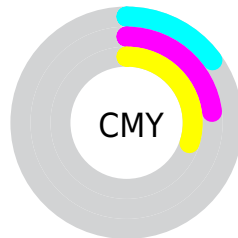


Cyan (0%)

Magenta (10%)

Yellow (18%)

Black (15%)



Cyan (15%)

Magenta (23%)

Yellow (30%)

# Brightness & Saturation Gradients

These gradients show how the Android color 4292461747 changes by changing the brightness by 10 percent. The first figure shows a shift by +10% for each color and the second figure -10%.

Similar to the brightness gradients but the following saturation gradients show a change of the Android color 4292461747 by changing the saturation by 10% instead.



 4292461747

 4292461747

4294967295

 4290619800

 4294966763

 4288843390

 4287067493

 4285422669

 4283778359

 4282199585

 4280752651

 4279107584

 4278190080

 4292461747

 4292461747

 4292458653

 4292464841

 4292455560

 4292467934

 4292452466

 4292471028

 4292449372

 4292474111

 4292446278

 4292476927

 4292443185

 4292440091

 4292436997

 4292436224

# Harmonies

## Analogous

The Analogous color harmony consists of three colors that are next to each other on the color wheel.



4292854202



4292461747



4291741873

# Triad

The Triadic color harmony groups three colors that are evenly spaced from another and form a triangle on the color wheel.



4292461747



4289580746



4291675354

# Complementary

The Complementary color scheme is a pair of colors which are on the opposite of each other on the color wheel.



4292461747



4289972441

# Split Complementary

Split-complementary colors differ from the complementary color scheme. The scheme consists of three colors, the original color and two neighbors of the complement color.



4290758878



4292461747



4289515221

# Square

The Square scheme is like the rectangle color scheme, but the four colors are evenly spaced on the color wheel.



4292461747



4290105023



4289973212



4292461009

# Rectangle

The Rectangle color scheme consists of four colors that form a rectangle on the color wheel.



4292461747



4291152563



4289973212



4291413468



# Sweetspot

The Sweet Spot groups the original color and five complimentary colors.



4292461747



4294965490



4292457417



4286610296



4278190080



4286611584



# Same Dimension

The Same Dimension uses a secret algorithm to generate beautiful new colors.



4292461747



4294959561



4292466355



4285425763



4289547776



4281210112

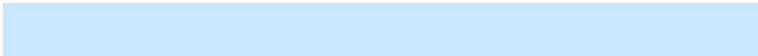


# Inverse Universe

The Inverse Universe completely reimagines the original color for something new.



4289972441



4291422207



4289967833



4284705134



4278214829



4278196526



# Previews

## White Background



This preview shows how the Android color 4292461747 looks on a white background.

## Color Contrast Check

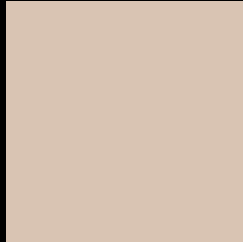
Large Text (above 18pt) WCAG AA × Fail

Any Text WCAG AA × Fail

Large Text (above 18pt) WCAG AAA × Fail

Any Text WCAG AAA × Fail

# Black Background



This preview shows how the Android color 4292461747 looks on a black background.

## Color Contrast Check

Large Text (above 18pt) WCAG AA ✓ Pass

Any Text WCAG AA ✓ Pass

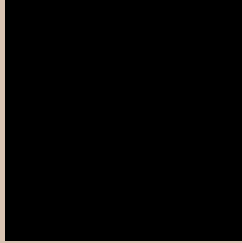
Large Text (above 18pt) WCAG AAA ✓ Pass

Any Text WCAG AAA ✓ Pass

If you want to check with other color combinations, try the [Color Contrast Checker](#).



# Android 4292461747 Background



This preview shows how black text looks on a background with the Android color 4292461747.



This preview shows how white text looks on a background with the Android color 4292461747.

# Color Blindness Simulation

Color vision deficiency is a very complex topic, and I could not describe the different causes any better than Wikipedia does, so if you want to learn more, you should check out their [article about color blindness](#).

## Dichromacy



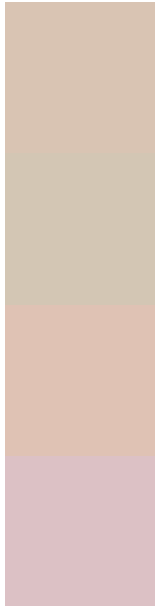
**Original Color**  
4292461747

**Protanopia**  
4291872693

**Deuteranopia**  
4293050804



# Trichromacy



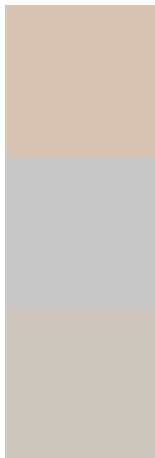
**Original Color**  
4292461747

**Protanomaly**  
4292069044

**Deuteranomaly**  
4292854452

**Tritanomaly**  
4292657605

# Monochromacy



**Original Color**  
4292461747

**Achromatopsia**  
4291348680

**Achromatomaly**  
4291741632

# CSS Examples

## Text

The CSS property to change the color of the text to Android 4292461747 is called "color". The color property can be set on classes, ids or directly on the HTML element.

This example shows how text in the color `rgb(217, 196, 179)` looks like.

```
.text, #text, p{  
    color:rgb(217, 196, 179)  
}
```

If you want to add a text shadow in that color use the text-shadow property, you can generate a text shadow directly with our [CSS Text Shadow Generator](#).

Here you see how black text with a 4 pixel rgb(217, 196, 179) colored shadow looks like.

```
.shadow{ text-shadow: 4px 4px 2px rgb(217, 196, 179) }
```

## Border

The CSS property to change the border of an element to Android 4292461747 is called "border". The border property can be set on classes, ids or directly on the HTML element.

This example shows the color as border, it can be applied via the CSS property "border" or "border-color".

```
.border, #border, table{ border:4px solid rgb(217, 196, 179) }
```

If only the border color should be changed use the property `border-color`.

```
.border{ border-color:rgb(217, 196, 179) }
```

If you want to add a box shadow in that color use:

Here you see how a box with a 4 pixel `rgb(217, 196, 179)` colored shadow looks like.

```
.boxshadow{ -moz-box-shadow:4px 4px 4px  
4px rgb(217, 196, 179); -webkit-box-  
shadow:4px 4px 4px 4px rgb(217, 196, 179);  
box-shadow:4px 4px 4px 4px rgb(217, 196,  
179) }
```

# Background

The CSS property to change the background color of an element to Android 4292461747 is called "background". The background property can be set on classes, ids or directly on the HTML element.

```
.background, #background, body{  
background: rgb(217, 196, 179) }
```

If only the background color should be changed can be used:

```
.background{ background-color: rgb(217,  
196, 179) }
```

This example shows the color as background, it is applied via the CSS property "background".

To optimize and compress your CSS code, you can use our [online CSS compressor and optimizer](#) based on csstidy. If you want to create a linear or radial gradient as background or border, check our [CSS Gradient Generator](#).



Hey! You found this booklet interesting? Support Converting Colors with the new Membership Option!

The pro membership hides all ads, plus gives you double the colors in the color bucket, and more awesome pro features!

**[Learn more, Memberships starting at \\$2.50/m!](#)**

**Follow me  
on Twitter!**

@ConvertingColor