

Converting Colors

Android(4292462002)

Have a look what the booklet for
Android(4292462002) contains.

Android(4292462002)	3
<i>Conversions</i>	4
<i>Details</i>	6
<i>Harmonies</i>	11
<i>Previews</i>	23
<i>Color Blindness Simulation</i>	26
<i>CSS Examples</i>	29

Color

Android(4292462002)

Conversions

Conversions Part 1

Format	Color
Hex	D9C5B2
RGB	217, 197, 178
RGB Percent	85%, 77%, 70%
CMY	0.1490, 0.2275, 0.3020
CMYK	0.00, 0.09, 0.18, 0.15
HSL	29°, 34%, 77%
HSV	29°, 18%, 85%
XYZ	56.6174, 57.8986, 50.3110
YIQ	200.8140, 18.0190, -1.6690

Conversions

Conversions Part 2

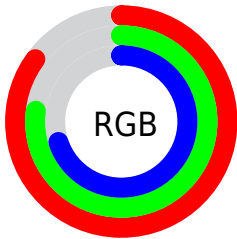
Format	Color
R_{YB}	217, 215, 178
Decimal	14271922
CIE Lab	80.68, 3.97, 12.07
CIE LCh	81, 12.709, 71.812
Yxy	57.8986, 0.3435, 0.3513
Android (android.graphics.Color)	4292462002 (0xFFD9C5B2)
YUV	200.8140, -11.2473, 14.1951
Hunter-Lab	76.0911, -0.3423, 14.0616

Details

The Android color `4292462002` is a light color, and the websafe version is hex `CCCCCC`. A complement of this color would be `4289906393`, and the grayscale version is `4291414473`.

A 20% lighter version of the original color is `4294967018`, and `4288843645` is the 20% darker color. If you saturate the color by 10%, you get `4292459164`, and if you desaturate by 10%, it is `4292464840`.

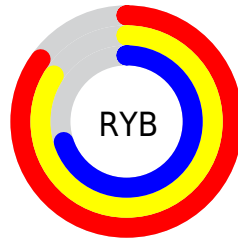
Distribution



Red (85%)

Green (77%)

Blue (70%)



Red (85%)

Yellow (84%)

Blue (70%)

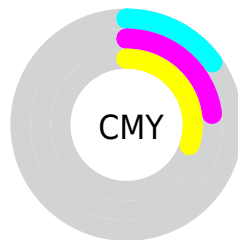


Cyan (0%)

Magenta (9%)

Yellow (18%)

Black (15%)



Cyan (15%)

Magenta (23%)

Yellow (30%)

Brightness & Saturation Gradients

These gradients show how the Android color 4292462002 changes by changing the brightness by 10 percent. The first figure shows a shift by +10% for each color and the second figure -10%.

Similar to the brightness gradients but the following saturation gradients show a change of the Android color 4292462002 by changing the saturation by 10% instead.

 4292462002

 4292462002

4294967295

 4290620055

 4294967018

 4288843645

 4287067748

 4285422924

 4283778614

 4282199840

 4280752650

 4279107584

 4278190080

 4292462002

 4292462002

 4292459164

 4292464840

 4292456327

 4292467677

 4292453489

 4292470515

 4292450395

 4292473599

 4292447558

 4292476415

 4292444720

 4292476927

 4292441882

 4292439044

 4292438528

Harmonies

Analogous

The Analogous color harmony consists of three colors that are next to each other on the color wheel.



4292919993



4292462002



4291676593

Triad

The Triadic color harmony groups three colors that are evenly spaced from another and form a triangle on the color wheel.



4292462002



4289449933



4291871962

Complementary

The Complementary color scheme is a pair of colors which are on the opposite of each other on the color wheel.



4292462002



4289906393

Split Complementary

Split-complementary colors differ from the complementary color scheme. The scheme consists of three colors, the original color and two neighbors of the complement color.



4290955487



4292462002



4289449688

Square

The Square scheme is like the rectangle color scheme, but the four colors are evenly spaced on the color wheel.



4292462002



4289974208



4290038750



4292657616

Rectangle

The Rectangle color scheme consists of four colors that form a rectangle on the color wheel.



4292462002



4291087284



4290038750



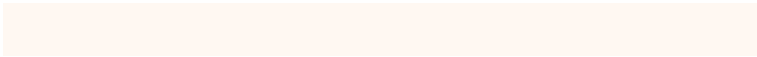
4291610076

Sweetspot

The Sweet Spot groups the original color and five complimentary colors.



4292462002



4294965490



4292457158



4286610552



4278190080



4286611584

Same Dimension

The Same Dimension uses a secret algorithm to generate beautiful new colors.



4292462002



4294959815



4292466866



4285425763



4289549312



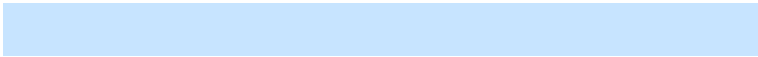
4281210368

Inverse Universe

The Inverse Universe completely reimagines the original color for something new.



4289906393



4291290367



4289901529



4284704878



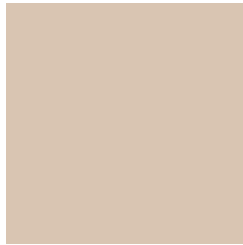
4278213037



4278196270

Previews

White Background



This preview shows how the Android color 4292462002 looks on a white background.

Color Contrast Check

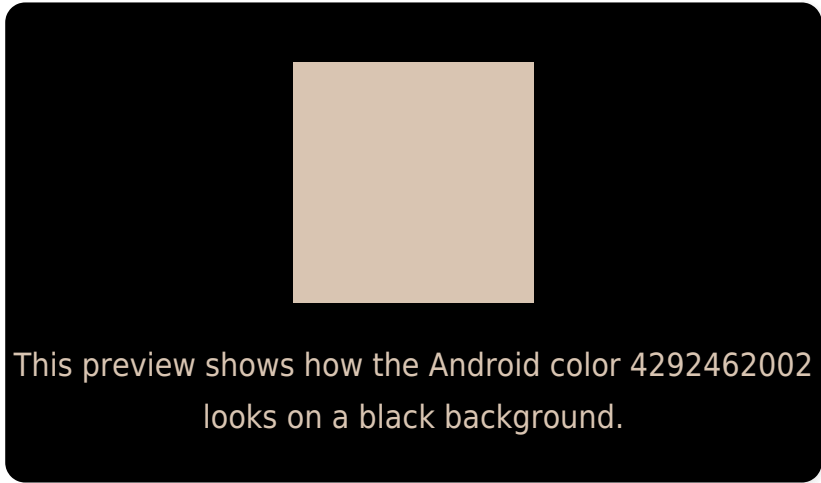
Large Text (above 18pt) WCAG AA × Fail

Any Text WCAG AA × Fail

Large Text (above 18pt) WCAG AAA × Fail

Any Text WCAG AAA × Fail

Black Background



Color Contrast Check

Large Text (above 18pt) WCAG AA ✓ Pass

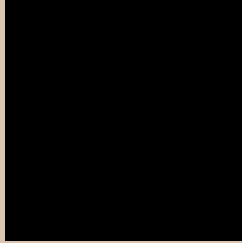
Any Text WCAG AA ✓ Pass

Large Text (above 18pt) WCAG AAA ✓ Pass

Any Text WCAG AAA ✓ Pass

If you want to check with other color combinations, try the [Color Contrast Checker](#).

Android 4292462002 Background



This preview shows how black text looks on a background with the Android color 4292462002.



This preview shows how white text looks on a background with the Android color 4292462002.

Color Blindness Simulation

Color vision deficiency is a very complex topic, and I could not describe the different causes any better than Wikipedia does, so if you want to learn more, you should check out their [article about color blindness](#).


Dichromacy



Original Color
4292462002

Protanopia
4291938483

Deuteranopia
4293181875



Tritanopia
4292723152

Trichromacy



Original Color

4292462002

Protanomaly

4292134835

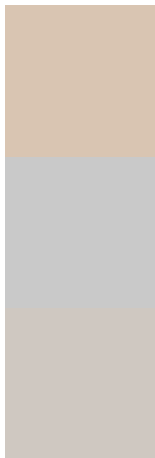
Deuteranomaly

4292919987

Tritanomaly

4292657861

Monochromacy



Original Color

4292462002

Achromatopsia

4291414473

Achromatomaly

4291807425

CSS Examples

Text

The CSS property to change the color of the text to Android 4292462002 is called "color". The color property can be set on classes, ids or directly on the HTML element.

This example shows how text in the color `rgb(217, 197, 178)` looks like.

```
.text, #text, p{  
    color:rgb(217, 197, 178)  
}
```

If you want to add a text shadow in that color use the text-shadow property, you can generate a text shadow directly with our [CSS Text Shadow Generator](#).

Here you see how black text with a 4 pixel rgb(217, 197, 178) colored shadow looks like.

```
.shadow{ text-shadow: 4px 4px 2px rgb(217, 197, 178) }
```

Border

The CSS property to change the border of an element to Android 4292462002 is called "border". The border property can be set on classes, ids or directly on the HTML element.

This example shows the color as border, it can be applied via the CSS property "border" or "border-color".

```
.border, #border, table{ border:4px solid rgb(217, 197, 178) }
```

If only the border color should be changed use the property border-color.

```
.border{ border-color:rgb(217, 197, 178) }
```

If you want to add a box shadow in that color use:

Here you see how a box with a 4 pixel rgb(217, 197, 178) colored shadow looks like.

```
.boxshadow{ -moz-box-shadow:4px 4px 4px  
4px rgb(217, 197, 178); -webkit-box-  
shadow:4px 4px 4px 4px rgb(217, 197, 178);  
box-shadow:4px 4px 4px 4px rgb(217, 197,  
178) }
```

Background

The CSS property to change the background color of an element to Android 4292462002 is called "background". The background property can be set on classes, ids or directly on the HTML element.

```
.background, #background, body{  
background: rgb(217, 197, 178) }
```

If only the background color should be changed can be used:

```
.background{ background-color: rgb(217,  
197, 178) }
```

This example shows the color as background, it is applied via the CSS property "background".

To optimize and compress your CSS code, you can use our [online CSS compressor and optimizer](#) based on csstidy. If you want to create a linear or radial gradient as background or border, check our [CSS Gradient Generator](#).

Hey! You found this booklet interesting? Support Converting Colors with the new Membership Option!

The pro membership hides all ads, plus gives you double the colors in the color bucket, and more awesome pro features!

[Learn more, Memberships starting at \\$2.50/m!](#)

**Follow me
on Twitter!**

@ConvertingColor