

Converting Colors

Android(4292486499)

Have a look what the booklet for
Android(4292486499) contains.

Android(4292486499)	3
<i>Conversions</i>	4
<i>Details</i>	6
<i>Harmonies</i>	11
<i>Previews</i>	23
<i>Color Blindness Simulation</i>	26
<i>CSS Examples</i>	29

Color

Android(4292486499)

Conversions

Conversions Part 1

Format	Color
Hex	DA2563
RGB	218, 37, 99
RGB Percent	85%, 15%, 39%
CMY	0.1451, 0.8549, 0.6118
CMYK	0.00, 0.83, 0.55, 0.15
HSL	339°, 71%, 50%
HSV	339°, 83%, 85%
XYZ	31.8271, 17.1294, 13.4332
YIQ	98.1870, 87.9740, 57.6540

Conversions

Conversions Part 2

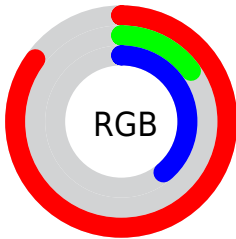
Format	Color
R_{YB}	218, 37, 99
Decimal	14296419
CIE _{Lab}	48.42, 69.52, 11.51
CIE _{LCh}	48, 70.470, 9.400
Yxy	17.1294, 0.5101, 0.2746
Android (android.graphics.Color)	4292486499 (0xFFDA2563)
YUV	98.1870, 0.4008, 105.0760
Hunter-Lab	41.3877, 64.8380, 9.7276

Details

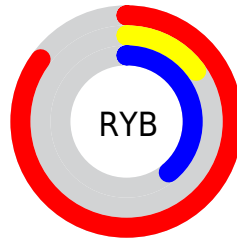
The Android color **4292486499** is a dark color, and the websafe version is hex **CC3366**. The color can be described as dark washed rose. A complement of this color would be **4280670876**, and the grayscale version is **4284637794**.

A 20% lighter version of the original color is **4294928277**, and **4288413749** is the 20% darker color. If you saturate the color by 10%, you get **4292480853**, and if you desaturate by 10%, it is **4292492145**.

Distribution



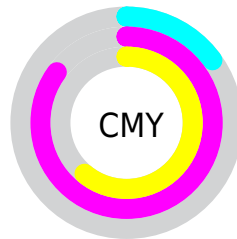
- Red (85%)
- Green (15%)
- Blue (39%)



- Red (85%)
- Yellow (15%)
- Blue (39%)



- Cyan (0%)
- Magenta (83%)
- Yellow (55%)
- Black (15%)



- Cyan (15%)
- Magenta (85%)
- Yellow (61%)

Brightness & Saturation Gradients

These gradients show how the Android color 4292486499 changes by changing the brightness by 10 percent. The first figure shows a shift by +10% for each color and the second figure -10%.

Similar to the brightness gradients but the following saturation gradients show a change of the Android color 4292486499 by changing the saturation by 10% instead.



4292486499



4292486499

4294967295



4290445387



4294928277



4288413749



4294935984



4286447648



4294943435



4284481545



4294950887



4282580995



4294958591



4280352769



4294966271



4278190080



4292486499



4292486499



4292480853



4292492145

 4292477003

 4292497792

 4292503182

 4292508828

 4292514475

 4292520121

 4292525767

 4292531158

 4292536804

Harmonies

Analogous

The Analogous color harmony consists of three colors that are next to each other on the color wheel.



4291180190



4292486499



4291707177

Triad

The Triadic color harmony groups three colors that are evenly spaced from another and form a triangle on the color wheel.



4292486499



4281697280



4278224355

Complementary

The Complementary color scheme is a pair of colors which are on the opposite of each other on the color wheel.



4292486499



4280670876

Split Complementary

Split-complementary colors differ from the complementary color scheme. The scheme consists of three colors, the original color and two neighbors of the complement color.



4278226110



4292486499



4278225478

Square

The Square scheme is like the rectangle color scheme, but the four colors are evenly spaced on the color wheel.



4292486499



4286281216



4278226309



4278220266

Rectangle

The Rectangle color scheme consists of four colors that form a rectangle on the color wheel.



4292486499



4290336512



4278226309



4278225114

Sweetspot

The Sweet Spot groups the original color and five complimentary colors.



4292486499



4294950869



4288357850



4286601574



4278190080



4286611584

Same Dimension

The Same Dimension uses a secret algorithm to generate beautiful new colors.



4292486499



4294901847



4292493349



4285424486



4289527867



4281204752

Inverse Universe

The Inverse Universe completely reimagines the original color for something new.



4292486499



4294901847



4280664026



4285424486



4289527867



4281204752

Previews

White Background



This preview shows how the Android color 4292486499 looks on a white background.

Color Contrast Check

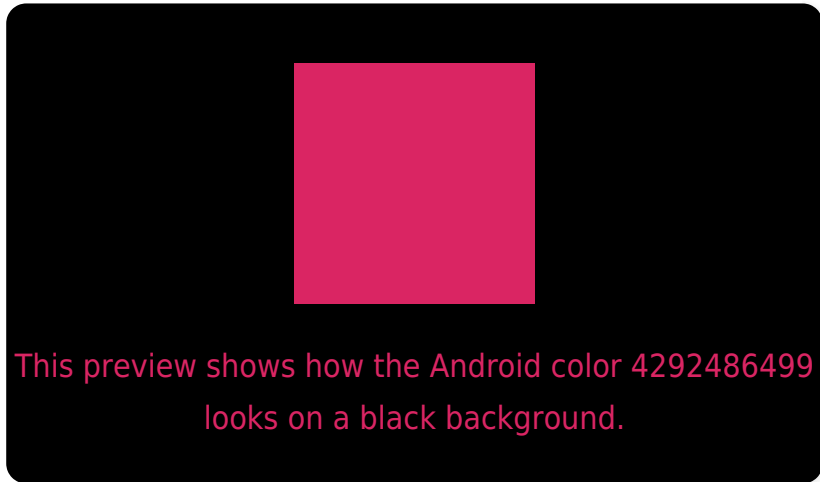
Large Text (above 18pt) WCAG AA ✓ Pass

Any Text WCAG AA ✓ Pass

Large Text (above 18pt) WCAG AAA ✓ Pass

Any Text WCAG AAA × Fail

Black Background



Color Contrast Check

Large Text (above 18pt) WCAG AA ✓ Pass

Any Text WCAG AA × Fail

Large Text (above 18pt) WCAG AAA × Fail

Any Text WCAG AAA × Fail

If you want to check with other color combinations, try the [Color Contrast Checker](#).

Android 4292486499 Background



This preview shows how black text looks on a background with the Android color 4292486499.



This preview shows how white text looks on a background with the Android color 4292486499.

Color Blindness Simulation

Color vision deficiency is a very complex topic, and I could not describe the different causes any better than Wikipedia does, so if you want to learn more, you should check out their [article about color blindness](#).

Dichromacy

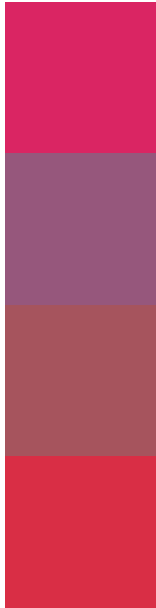


Original Color
4292486499

Protanopia
4285494154

Deuteranopia
4287131482

Trichromacy



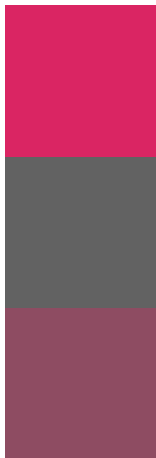
Original Color
4292486499

Protanomaly
4288042876

Deuteranomaly
4289090653

Tritanomaly
4292423237

Monochromacy



Original Color
4292486499

Achromatopsia
4284637794

Achromatomaly
4287515746

CSS Examples

Text

The CSS property to change the color of the text to Android 4292486499 is called "color". The color property can be set on classes, ids or directly on the HTML element.

This example shows how text in the color `rgb(218, 37, 99)` looks like.

```
.text, #text, p{  
    color:rgb(218, 37, 99)  
}
```

If you want to add a text shadow in that color use the text-shadow property, you can generate a text shadow directly with our [CSS Text Shadow Generator](#).

Here you see how black text with a 4 pixel rgb(218, 37, 99) colored shadow looks like.

```
.shadow{ text-shadow: 4px 4px 2px rgb(218, 37, 99) }
```

Border

The CSS property to change the border of an element to Android 4292486499 is called "border". The border property can be set on classes, ids or directly on the HTML element.

This example shows the color as border, it can be applied via the CSS property "border" or "border-color".

```
.border, #border, table{ border:4px solid rgb(218, 37, 99) }
```

If only the border color should be changed use the property `border-color`.

```
.border{ border-color:rgb(218, 37, 99) }
```

If you want to add a box shadow in that color use:

Here you see how a box with a 4 pixel `rgb(218, 37, 99)` colored shadow looks like.

```
.boxshadow{ -moz-box-shadow:4px 4px 4px  
4px rgb(218, 37, 99); -webkit-box-  
shadow:4px 4px 4px 4px rgb(218, 37, 99);  
box-shadow:4px 4px 4px 4px rgb(218, 37,  
99) }
```

Background

The CSS property to change the background color of an element to Android 4292486499 is called "background". The background property can be set on classes, ids or directly on the HTML element.

```
.background, #background, body{  
background: rgb(218, 37, 99) }
```

If only the background color should be changed can be used:

```
.background{ background-color: rgb(218, 37,  
99) }
```

This example shows the color as background, it is applied via the CSS property "background".

To optimize and compress your CSS code, you can use our [online CSS compressor and optimizer](#) based on csstidy. If you want to create a linear or radial gradient as background or border, check our [CSS Gradient Generator](#).

Hey! You found this booklet interesting? Support Converting Colors with the new Membership Option!

The pro membership hides all ads, plus gives you double the colors in the color bucket, and more awesome pro features!

[Learn more, Memberships starting at \\$2.50/m!](#)

**Follow me
on Twitter!**

@ConvertingColor