

Converting Colors

Android(4292489835)

Have a look what the booklet for
Android(4292489835) contains.

Android(4292489835)	3
<i>Conversions</i>	4
<i>Details</i>	6
<i>Harmonies</i>	11
<i>Previews</i>	23
<i>Color Blindness Simulation</i>	26
<i>CSS Examples</i>	29

Color

Android(4292489835)

Conversions

Conversions Part 1

Format	Color
Hex	DA326B
RGB	218, 50, 107
RGB Percent	85%, 20%, 42%
CMY	0.1451, 0.8039, 0.5804
CMYK	0.00, 0.77, 0.51, 0.15
HSL	340°, 69%, 53%
HSV	340°, 77%, 85%
XYZ	32.7079, 18.2482, 15.7083
YIQ	106.7300, 81.8310, 53.3430

Conversions

Conversions Part 2

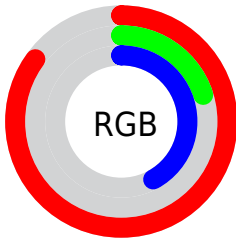
Format	Color
R_{YB}	218, 50, 107
Decimal	14299755
CIE _{Lab}	49.80, 66.78, 8.55
CIE _{LCh}	50, 67.324, 7.293
Yxy	18.2482, 0.4906, 0.2737
Android (android.graphics.Color)	4292489835 (0xFFDA326B)
YUV	106.7300, 0.1331, 97.5838
Hunter-Lab	42.7179, 61.9162, 8.1003

Details

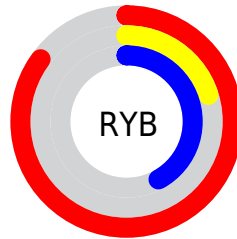
The Android color **4292489835** is a dark color, and the websafe version is hex **CC3366**. The color can be described as dark muted rose. A complement of this color would be **4281522849**, and the grayscale version is **4285229931**.

A 20% lighter version of the original color is **4294930590**, and **4288479292** is the 20% darker color. If you saturate the color by 10%, you get **4292484189**, and if you desaturate by 10%, it is **4292495481**.

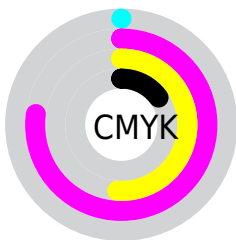
Distribution



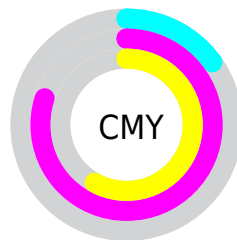
- Red (85%)
- Green (20%)
- Blue (42%)



- Red (85%)
- Yellow (20%)
- Blue (42%)



- Cyan (0%)
- Magenta (77%)
- Yellow (51%)
- Black (15%)



- Cyan (15%)
- Magenta (80%)
- Yellow (58%)

Brightness & Saturation Gradients

These gradients show how the Android color 4292489835 changes by changing the brightness by 10 percent. The first figure shows a shift by +10% for each color and the second figure -10%.

Similar to the brightness gradients but the following saturation gradients show a change of the Android color 4292489835 by changing the saturation by 10% instead.



4292489835



4292489835

4294967295



4290445395



4294930590



4288479292



4294938041



4286513191



4294945492



4284547091



4294952945



4282777603



4294960383



4280549377



4278190080



4292489835



4292489835



4292484189



4292495481

 4292478542

 4292501128

 4292477002

 4292506518

 4292512165

 4292517811

 4292523457

 4292529104

 4292534494

 4292540141

Harmonies

Analogous

The Analogous color harmony consists of three colors that are next to each other on the color wheel.



4291051940



4292489835



4291905076

Triad

The Triadic color harmony groups three colors that are evenly spaced from another and form a triangle on the color wheel.



4292489835



4282680832



4278225120

Complementary

The Complementary color scheme is a pair of colors which are on the opposite of each other on the color wheel.



4292489835



4281522849

Split Complementary

Split-complementary colors differ from the complementary color scheme. The scheme consists of three colors, the original color and two neighbors of the complement color.



4278226875



4292489835



4278226247

Square

The Square scheme is like the rectangle color scheme, but the four colors are evenly spaced on the color wheel.



4292489835



4286806272



4278227075



4278221289

Rectangle

The Rectangle color scheme consists of four colors that form a rectangle on the color wheel.



4292489835



4290664970



4278227075



4278225879

Sweetspot

The Sweet Spot groups the original color and five complimentary colors.



4292489835



4294952152



4288623322



4286602344



4278190080



4286611584

Same Dimension

The Same Dimension uses a secret algorithm to generate beautiful new colors.



4292489835



4294906980



4292496178



4285424486



4289527867



4281204752

Inverse Universe

The Inverse Universe completely reimagines the original color for something new.



4292489835



4294906980



4281516506



4285424486



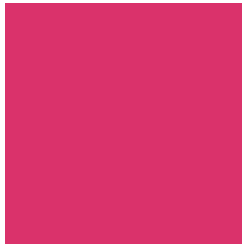
4289527867



4281204752

Previews

White Background



This preview shows how the Android color 4292489835 looks on a white background.

Color Contrast Check

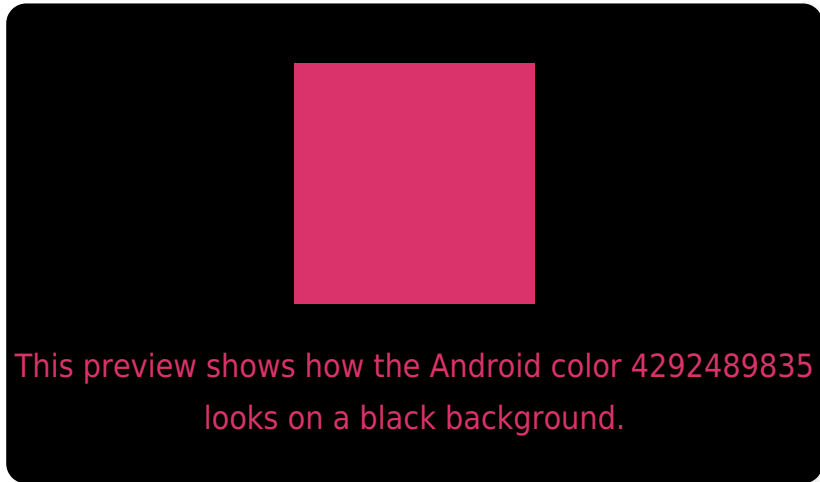
Large Text (above 18pt) WCAG AA ✓ Pass

Any Text WCAG AA ✓ Pass

Large Text (above 18pt) WCAG AAA ✓ Pass

Any Text WCAG AAA × Fail

Black Background



Color Contrast Check

Large Text (above 18pt) WCAG AA ✓ Pass

Any Text WCAG AA ✓ Pass

Large Text (above 18pt) WCAG AAA ✓ Pass

Any Text WCAG AAA × Fail

If you want to check with other color combinations, try the [Color Contrast Checker](#).

Android 4292489835 Background



This preview shows how black text looks on a background with the Android color 4292489835.



This preview shows how white text looks on a background with the Android color 4292489835.

Color Blindness Simulation

Color vision deficiency is a very complex topic, and I could not describe the different causes any better than Wikipedia does, so if you want to learn more, you should check out their [article about color blindness](#).

Dichromacy

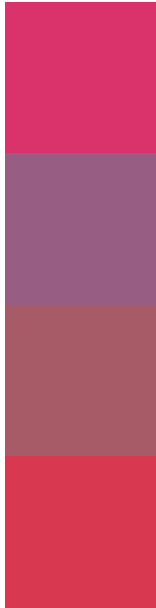


Original Color
4292489835

Protanopia
4285691536

Deuteranopia
4287263331

Trichromacy



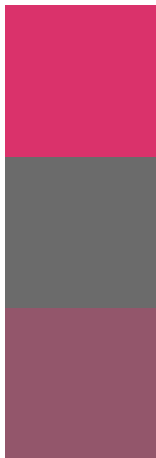
Original Color
4292489835

Protanomaly
4288175491

Deuteranomaly
4289157990

Tritanomaly
4292426064

Monochromacy



Original Color
4292489835

Achromatopsia
4285229931

Achromatomaly
4287845995

CSS Examples

Text

The CSS property to change the color of the text to Android 4292489835 is called "color". The color property can be set on classes, ids or directly on the HTML element.

This example shows how text in the color `rgb(218, 50, 107)` looks like.

```
.text, #text, p{  
    color:rgb(218, 50, 107)  
}
```

If you want to add a text shadow in that color use the text-shadow property, you can generate a text shadow directly with our [CSS Text Shadow Generator](#).

Here you see how black text with a 4 pixel rgb(218, 50, 107) colored shadow looks like.

```
.shadow{ text-shadow: 4px 4px 2px rgb(218, 50, 107) }
```

Border

The CSS property to change the border of an element to Android 4292489835 is called "border". The border property can be set on classes, ids or directly on the HTML element.

This example shows the color as border, it can be applied via the CSS property "border" or "border-color".

```
.border, #border, table{ border:4px solid rgb(218, 50, 107) }
```

If only the border color should be changed use the property `border-color`.

```
.border{ border-color:rgb(218, 50, 107) }
```

If you want to add a box shadow in that color use:

Here you see how a box with a 4 pixel `rgb(218, 50, 107)` colored shadow looks like.

```
.boxshadow{ -moz-box-shadow:4px 4px 4px  
4px rgb(218, 50, 107); -webkit-box-  
shadow:4px 4px 4px 4px rgb(218, 50, 107);  
box-shadow:4px 4px 4px 4px rgb(218, 50,  
107) }
```

Background

The CSS property to change the background color of an element to Android 4292489835 is called "background". The background property can be set on classes, ids or directly on the HTML element.

```
.background, #background, body{  
background: rgb(218, 50, 107) }
```

If only the background color should be changed can be used:

```
.background{ background-color: rgb(218, 50,  
107) }
```

This example shows the color as background, it is applied via the CSS property "background".

To optimize and compress your CSS code, you can use our [online CSS compressor and optimizer](#) based on csstidy. If you want to create a linear or radial gradient as background or border, check our [CSS Gradient Generator](#).

Hey! You found this booklet interesting? Support Converting Colors with the new Membership Option!

The pro membership hides all ads, plus gives you double the colors in the color bucket, and more awesome pro features!

[Learn more, Memberships starting at \\$2.50/m!](#)

**Follow me
on Twitter!**

@ConvertingColor