

Converting Colors

Android(4292505470)

Have a look what the booklet for
Android(4292505470) contains.

Android(4292505470)	3
<i>Conversions</i>	4
<i>Details</i>	6
<i>Harmonies</i>	11
<i>Previews</i>	23
<i>Color Blindness Simulation</i>	26
<i>CSS Examples</i>	29

Color

Android(4292505470)

Conversions

Conversions Part 1

Format	Color
Hex	DA6F7E
RGB	218, 111, 126
RGB Percent	85%, 44%, 49%
CMY	0.1451, 0.5647, 0.5059
CMYK	0.00, 0.49, 0.42, 0.15
HSL	352°, 59%, 65%
HSV	352°, 49%, 85%
XYZ	38.3638, 27.7807, 23.0789
YIQ	144.7030, 58.9570, 27.3490

Conversions

Conversions Part 2

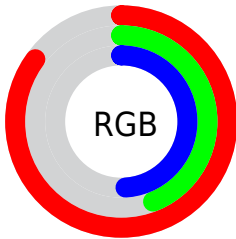
Format	Color
R_{YB}	218, 111, 126
Decimal	14315390
CIE _{Lab}	59.69, 43.26, 11.25
CIE _{LCh}	60, 44.703, 14.580
Yxy	27.7807, 0.4300, 0.3114
Android (android.graphics.Color)	4292505470 (0xFFDA6F7E)
YUV	144.7030, -9.2206, 64.2815
Hunter-Lab	52.7074, 37.6858, 10.9340

Details

The Android color **4292505470** is a dark color, and the websafe version is hex **CC6666**. A complement of this color would be **4285520587**, and the grayscale version is **4287730065**.

A 20% lighter version of the original color is **4294944179**, and **4288625485** is the 20% darker color. If you saturate the color by 10%, you get **4292499819**, and if you desaturate by 10%, it is **4292511121**.

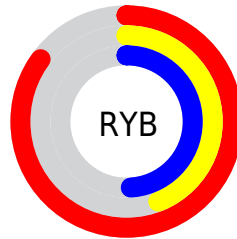
Distribution



Red (85%)

Green (44%)

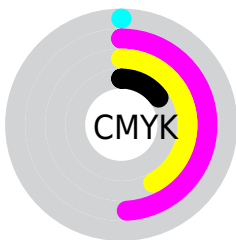
Blue (49%)



Red (85%)

Yellow (44%)

Blue (49%)

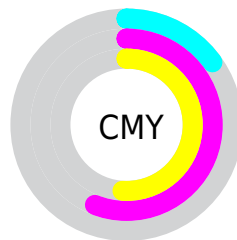


Cyan (0%)

Magenta (49%)

Yellow (42%)

Black (15%)



Cyan (15%)

Magenta (56%)

Yellow (51%)

Brightness & Saturation Gradients

These gradients show how the Android color 4292505470 changes by changing the brightness by 10 percent. The first figure shows a shift by +10% for each color and the second figure -10%.

Similar to the brightness gradients but the following saturation gradients show a change of the Android color 4292505470 by changing the saturation by 10% instead.



4292505470



4292505470

4294967295



4290532709



4294944179



4288625485



4294951374



4286783543



4294958570



4284940321



4294966015



4283170827



4281532418



4278190080



4292505470



4292505470



4292499819



4292511121

 4292494169

 4292516771

 4292488774

 4292522166

 4292483123

 4292527817

 4292477472

 4292533468

 4292476959

 4292539118

 4292542463

Harmonies

Analogous

The Analogous color harmony consists of three colors that are next to each other on the color wheel.



4291719590



4292505470



4291917914

Triad

The Triadic color harmony groups three colors that are evenly spaced from another and form a triangle on the color wheel.



4292505470



4285046102



4278229723

Complementary

The Complementary color scheme is a pair of colors which are on the opposite of each other on the color wheel.



4292505470



4285520587

Split Complementary

Split-complementary colors differ from the complementary color scheme. The scheme consists of three colors, the original color and two neighbors of the complement color.



4278231494



4292505470



4280722042

Square

The Square scheme is like the rectangle color scheme, but the four colors are evenly spaced on the color wheel.



4292505470



4287927361



4278232226



4285631964

Rectangle

The Rectangle color scheme consists of four colors that form a rectangle on the color wheel.



4292505470



4290937417



4278232226



4278230486

Sweetspot

The Sweet Spot groups the original color and five complimentary colors.



4292505470



4294957534



4291456986



4286605676



4278190080



4286611584

Same Dimension

The Same Dimension uses a secret algorithm to generate beautiful new colors.



4292505470



4294928766



4292514927



4285424484



4289527832



4281204742

Inverse Universe

The Inverse Universe completely reimagines the original color for something new.



4292505470



4294928766



4285511130



4285424484



4289527832



4281204742

Previews

White Background



This preview shows how the Android color 4292505470 looks on a white background.

Color Contrast Check

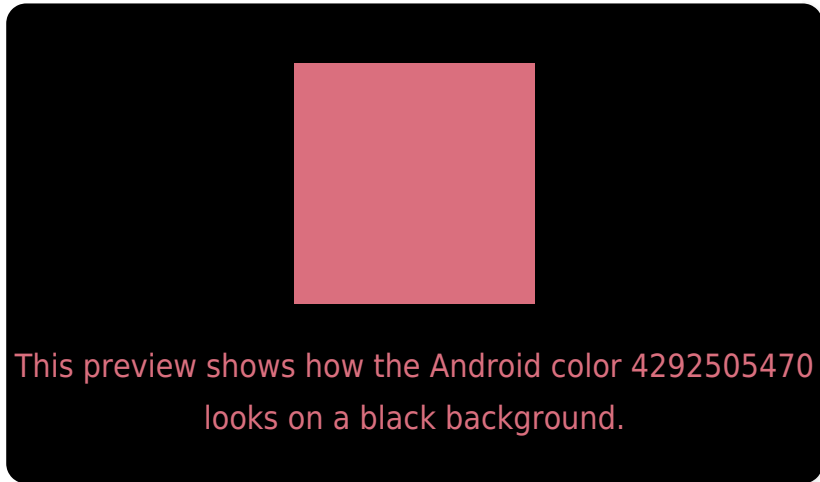
Large Text (above 18pt) WCAG AA ✓ Pass

Any Text WCAG AA ✗ Fail

Large Text (above 18pt) WCAG AAA ✗ Fail

Any Text WCAG AAA ✗ Fail

Black Background



Color Contrast Check

Large Text (above 18pt) WCAG AA ✓ Pass

Any Text WCAG AA ✓ Pass

Large Text (above 18pt) WCAG AAA ✓ Pass

Any Text WCAG AAA × Fail

If you want to check with other color combinations, try the [Color Contrast Checker](#).

Android 4292505470 Background



This preview shows how black text looks on a background with the Android color 4292505470.



This preview shows how white text looks on a background with the Android color 4292505470.

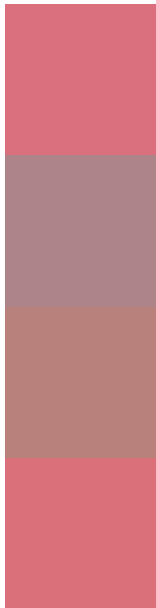
Color Blindness Simulation

Color vision deficiency is a very complex topic, and I could not describe the different causes any better than Wikipedia does, so if you want to learn more, you should check out their [article about color blindness](#).

Dichromacy



Trichromacy



Original Color
4292505470

Protanomaly
4289561737

Deuteranomaly
4290347387

Tritanomaly
4292505722

Monochromacy



Original Color
4292505470

Achromatopsia
4287730065

Achromatomaly
4289496458

CSS Examples

Text

The CSS property to change the color of the text to Android 4292505470 is called "color". The color property can be set on classes, ids or directly on the HTML element.

This example shows how text in the color `rgb(218, 111, 126)` looks like.

```
.text, #text, p{  
    color:rgb(218, 111, 126)  
}
```

If you want to add a text shadow in that color use the text-shadow property, you can generate a text shadow directly with our [CSS Text Shadow Generator](#).

Here you see how black text with a 4 pixel rgb(218, 111, 126) colored shadow looks like.

```
.shadow{ text-shadow: 4px 4px 2px rgb(218, 111, 126) }
```

Border

The CSS property to change the border of an element to Android 4292505470 is called "border". The border property can be set on classes, ids or directly on the HTML element.

This example shows the color as border, it can be applied via the CSS property "border" or "border-color".

```
.border, #border, table{ border:4px solid rgb(218, 111, 126) }
```

If only the border color should be changed use the property border-color.

```
.border{ border-color:rgb(218, 111, 126) }
```

If you want to add a box shadow in that color use:

Here you see how a box with a 4 pixel rgb(218, 111, 126) colored shadow looks like.

```
.boxshadow{ -moz-box-shadow:4px 4px 4px  
4px rgb(218, 111, 126); -webkit-box-  
shadow:4px 4px 4px 4px rgb(218, 111, 126);  
box-shadow:4px 4px 4px 4px rgb(218, 111,  
126) }
```

Background

The CSS property to change the background color of an element to Android 4292505470 is called "background". The background property can be set on classes, ids or directly on the HTML element.

```
.background, #background, body{  
background: rgb(218, 111, 126) }
```

If only the background color should be changed can be used:

```
.background{ background-color: rgb(218,  
111, 126) }
```

This example shows the color as background, it is applied via the CSS property "background".

To optimize and compress your CSS code, you can use our [online CSS compressor and optimizer](#) based on csstidy. If you want to create a linear or radial gradient as background or border, check our [CSS Gradient Generator](#).

Hey! You found this booklet interesting? Support Converting Colors with the new Membership Option!

The pro membership hides all ads, plus gives you double the colors in the color bucket, and more awesome pro features!

[Learn more, Memberships starting at \\$2.50/m!](#)

**Follow me
on Twitter!**

@ConvertingColor