

Converting Colors

Android(4292512659)

Have a look what the booklet for
Android(4292512659) contains.

Android(4292512659)	3
<i>Conversions</i>	4
<i>Details</i>	6
<i>Harmonies</i>	11
<i>Previews</i>	23
<i>Color Blindness Simulation</i>	26
<i>CSS Examples</i>	29

Color

Android(4292512659)

Conversions

Conversions Part 1

Format	Color
Hex	DA8B93
RGB	218, 139, 147
RGB Percent	85%, 55%, 58%
CMY	0.1451, 0.4549, 0.4235
CMYK	0.00, 0.36, 0.33, 0.15
HSL	354°, 52%, 70%
HSV	354°, 36%, 85%
XYZ	43.4125, 35.4772, 32.1635
YIQ	163.5330, 44.5160, 19.2360

Conversions

Conversions Part 2

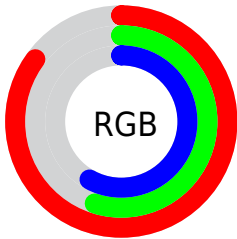
Format	Color
R _Y B	218, 139, 147
Decimal	14322579
CIE Lab	66.12, 31.10, 8.39
CIE LCh	66, 32.212, 15.090
Yxy	35.4772, 0.3909, 0.3195
Android (android.graphics.Color)	4292512659 (0xFFDA8B93)
YUV	163.5330, -8.1508, 47.7676
Hunter-Lab	59.5628, 25.8654, 9.6778

Details

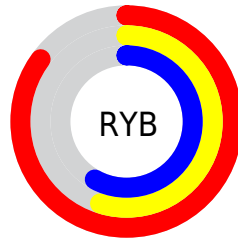
The Android color `4292512659` is a light color, and the websafe version is hex `CC9999`. A complement of this color would be `4287355602`, and the grayscale version is `4288980132`.

A 20% lighter version of the original color is `4294951369`, and `4288764001` is the 20% darker color. If you saturate the color by 10%, you get `4292507007`, and if you desaturate by 10%, it is `4292518311`.

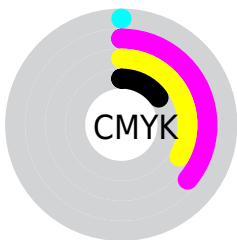
Distribution



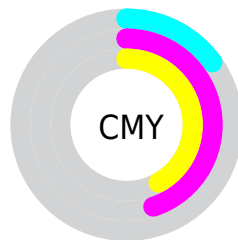
- Red (85%)
- Green (55%)
- Blue (58%)



- Red (85%)
- Yellow (55%)
- Blue (58%)



- Cyan (0%)
- Magenta (36%)
- Yellow (33%)
- Black (15%)



- Cyan (15%)
- Magenta (45%)
- Yellow (42%)

Brightness & Saturation Gradients

These gradients show how the Android color 4292512659 changes by changing the brightness by 10 percent. The first figure shows a shift by +10% for each color and the second figure -10%.

Similar to the brightness gradients but the following saturation gradients show a change of the Android color 4292512659 by changing the saturation by 10% instead.

 4292512659

 4292512659

4294967295

 4290605433

 4294951369

 4288764001

 4294958821

 4286922569

 4294966015

 4285146930

 4283436574

 4281794564

 4280025089

 4278190080

 4292512659

 4292512659

 4292507007

 4292518311

 4292501356

 4292523962

 4292495960

 4292529358

 4292490309

 4292535009

 4292484657

 4292540661

 4292479005

 4292542463

 4292476950

Harmonies

Analogous

The Analogous color harmony consists of three colors that are next to each other on the color wheel.



4291857584



4292512659



4292120953

Triad

The Triadic color harmony groups three colors that are evenly spaced from another and form a triangle on the color wheel.



4292512659



4286950263



4284655832

Complementary

The Complementary color scheme is a pair of colors which are on the opposite of each other on the color wheel.



4292512659



4287355602

Split Complementary

Split-complementary colors differ from the complementary color scheme. The scheme consists of three colors, the original color and two neighbors of the complement color.



4282298057



4292512659



4284657553

Square

The Square scheme is like the rectangle color scheme, but the four colors are evenly spaced on the color wheel.



4292512659



4289111144



4282560687



4287667928

Rectangle

The Rectangle color scheme consists of four colors that form a rectangle on the color wheel.



4292512659



4291401581



4282560687



4283738836

Sweetspot

The Sweet Spot groups the original color and five complimentary colors.



4292512659



4294960102



4291922906



4286607217



4278190080



4286611584

Same Dimension

The Same Dimension uses a secret algorithm to generate beautiful new colors.



4292512659



4294939036



4292520331



4285424484



4289527826



4281204741

Inverse Universe

The Inverse Universe completely reimagines the original color for something new.



4292512659



4294939036



4287347930



4285424484



4289527826



4281204741

Previews

White Background



This preview shows how the Android color 4292512659 looks on a white background.

Color Contrast Check

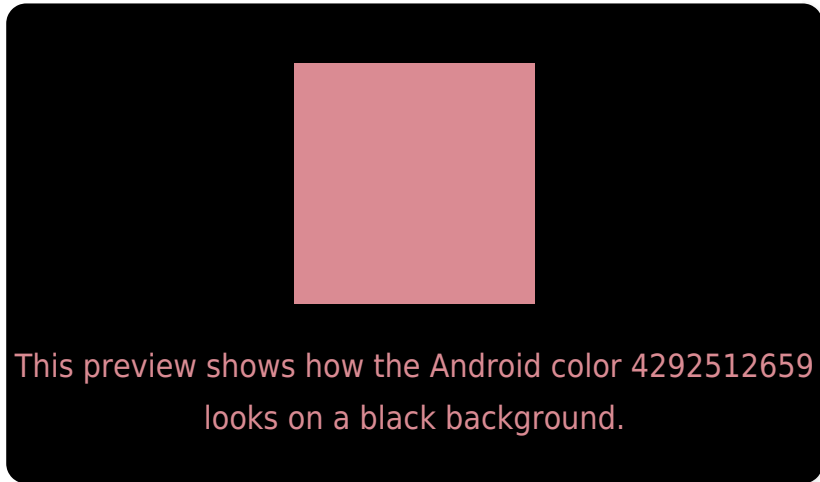
Large Text (above 18pt) WCAG AA × Fail

Any Text WCAG AA × Fail

Large Text (above 18pt) WCAG AAA × Fail

Any Text WCAG AAA × Fail

Black Background



Color Contrast Check

Large Text (above 18pt) WCAG AA ✓ Pass

Any Text WCAG AA ✓ Pass

Large Text (above 18pt) WCAG AAA ✓ Pass

Any Text WCAG AAA ✓ Pass

If you want to check with other color combinations, try the [Color Contrast Checker](#).

Android 4292512659 Background



This preview shows how black text looks on a background with the Android color 4292512659.



This preview shows how white text looks on a background with the Android color 4292512659.

Color Blindness Simulation

Color vision deficiency is a very complex topic, and I could not describe the different causes any better than Wikipedia does, so if you want to learn more, you should check out their [article about color blindness](#).

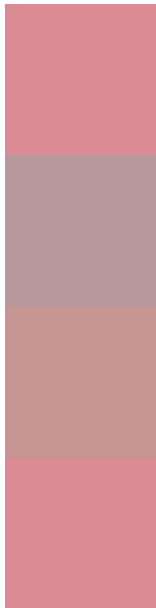
Dichromacy





Tritanopia
4292512661

Trichromacy



Original Color
4292512659

Protanomaly
4290287771

Deuteranomaly
4291073425

Tritanomaly
4292512660

Monochromacy



Original Color
4292512659

Achromatopsia
4288980132

Achromatomaly
4290288542

CSS Examples

Text

The CSS property to change the color of the text to Android 4292512659 is called "color". The color property can be set on classes, ids or directly on the HTML element.

This example shows how text in the color `rgb(218, 139, 147)` looks like.

```
.text, #text, p{  
    color:rgb(218, 139, 147)  
}
```

If you want to add a text shadow in that color use the text-shadow property, you can generate a text shadow directly with our [CSS Text Shadow Generator](#).

Here you see how black text with a 4 pixel rgb(218, 139, 147) colored shadow looks like.

```
.shadow{ text-shadow: 4px 4px 2px rgb(218, 139, 147) }
```

Border

The CSS property to change the border of an element to Android 4292512659 is called "border". The border property can be set on classes, ids or directly on the HTML element.

This example shows the color as border, it can be applied via the CSS property "border" or "border-color".

```
.border, #border, table{ border:4px solid rgb(218, 139, 147) }
```

If only the border color should be changed use the property `border-color`.

```
.border{ border-color:rgb(218, 139, 147) }
```

If you want to add a box shadow in that color use:

Here you see how a box with a 4 pixel `rgb(218, 139, 147)` colored shadow looks like.

```
.boxshadow{ -moz-box-shadow:4px 4px 4px  
4px rgb(218, 139, 147); -webkit-box-  
shadow:4px 4px 4px 4px rgb(218, 139, 147);  
box-shadow:4px 4px 4px 4px rgb(218, 139,  
147) }
```

Background

The CSS property to change the background color of an element to Android 4292512659 is called "background". The background property can be set on classes, ids or directly on the HTML element.

```
.background, #background, body{  
background: rgb(218, 139, 147) }
```

If only the background color should be changed can be used:

```
.background{ background-color: rgb(218,  
139, 147) }
```

This example shows the color as background, it is applied via the CSS property "background".

To optimize and compress your CSS code, you can use our [online CSS compressor and optimizer](#) based on csstidy. If you want to create a linear or radial gradient as background or border, check our [CSS Gradient Generator](#).

Hey! You found this booklet interesting? Support Converting Colors with the new Membership Option!

The pro membership hides all ads, plus gives you double the colors in the color bucket, and more awesome pro features!

[Learn more, Memberships starting at \\$2.50/m!](#)

**Follow me
on Twitter!**

@ConvertingColor