

Converting Colors

Android(4292513176)

Have a look what the booklet for
Android(4292513176) contains.

| | |
|--|----|
| Android(4292513176) | 3 |
| <i>Conversions</i> | 4 |
| <i>Details</i> | 6 |
| <i>Harmonies</i> | 11 |
| <i>Previews</i> | 23 |
| <i>Color Blindness Simulation</i> | 26 |
| <i>CSS Examples</i> | 29 |

Color

Android(4292513176)

Conversions

Conversions Part 1

| Format | Color |
|-------------|----------------------------|
| Hex | DA8D98 |
| RGB | 218, 141, 152 |
| RGB Percent | 85%, 55%, 60% |
| CMY | 0.1451, 0.4471, 0.4039 |
| CMYK | 0.00, 0.35, 0.30, 0.15 |
| HSL | 351°, 51%, 70% |
| HSV | 351°, 35%, 85% |
| XYZ | 44.1058, 36.2222, 34.3727 |
| YIQ | 165.2770, 42.3610, 19.7450 |

Conversions

Conversions Part 2

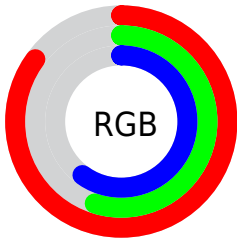
| Format | Color |
|-------------------------------------|-------------------------------|
| R _Y B | 218, 141, 152 |
| Decimal | 14323096 |
| CIE Lab | 66.69, 30.68, 6.39 |
| CIE LCh | 67, 31.338, 11.761 |
| Yxy | 36.2222, 0.3845, 0.3158 |
| Android (android.graphics.Color) | 4292513176 (0xFFDA8D98) |
| YUV | 165.2770, -6.5456, 46.2381 |
| Hunter-Lab | 60.1849, 25.4883, 8.2678 |

Details

The Android color `4292513176` is a light color, and the websafe version is hex `CC9999`. A complement of this color would be `4287486671`, and the grayscale version is `4289045925`.

A 20% lighter version of the original color is `4294951886`, and `4288764517` is the 20% darker color. If you saturate the color by 10%, you get `4292507525`, and if you desaturate by 10%, it is `4292518827`.

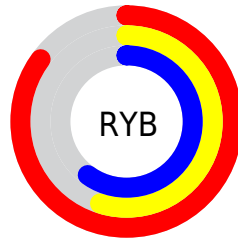
Distribution



Red (85%)

Green (55%)

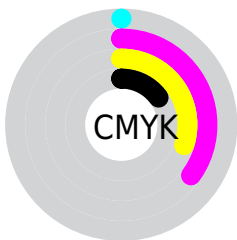
Blue (60%)



Red (85%)

Yellow (55%)

Blue (60%)

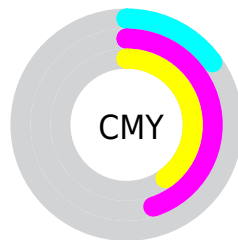


Cyan (0%)

Magenta (35%)

Yellow (30%)

Black (15%)



Cyan (15%)

Magenta (45%)

Yellow (40%)

Brightness & Saturation Gradients

These gradients show how the Android color 4292513176 changes by changing the brightness by 10 percent. The first figure shows a shift by +10% for each color and the second figure -10%.

Similar to the brightness gradients but the following saturation gradients show a change of the Android color 4292513176 by changing the saturation by 10% instead.

 4292513176

 4292513176

4294967295

 4290605950

 4294951886

 4288764517

 4294959338

 4286988621

 4294966527

 4285212983

 4283502881

 4281860107

 4280156161

 4278190080

 4292513176

 4292513176

 4292507525

 4292518827

 4292501875

 4292524477

 4292496480

 4292529872

 4292490829

 4292535523

 4292485179

 4292541173

 4292479528

 4292542463

 4292476959

Harmonies

Analogous

The Analogous color harmony consists of three colors that are next to each other on the color wheel.



4291792821



4292513176



4292252286

Triad

The Triadic color harmony groups three colors that are evenly spaced from another and form a triangle on the color wheel.



4292513176



4287343735



4284656343

Complementary

The Complementary color scheme is a pair of colors which are on the opposite of each other on the color wheel.



4292513176



4287486671

Split Complementary

Split-complementary colors differ from the complementary color scheme. The scheme consists of three colors, the original color and two neighbors of the complement color.



4282691783



4292513176



4285182096

Square

The Square scheme is like the rectangle color scheme, but the four colors are evenly spaced on the color wheel.



4292513176



4289438827



4283151021



4287472089

Rectangle

The Rectangle color scheme consists of four colors that form a rectangle on the color wheel.



4292513176



4291598193



4283151021



4283804883

Sweetspot

The Sweet Spot groups the original color and five complimentary colors.



4292513176



4294960103



4291726810



4286607217



4278190080



4286611584

Same Dimension

The Same Dimension uses a secret algorithm to generate beautiful new colors.



4292513176



4294939811



4292520077



4285424484



4289527833



4281204743

Inverse Universe

The Inverse Universe completely reimagines the original color for something new.



4292513176



4294939811



4287479770



4285424484



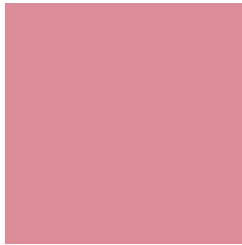
4289527833



4281204743

Previews

White Background



This preview shows how the Android color 4292513176 looks on a white background.

Color Contrast Check

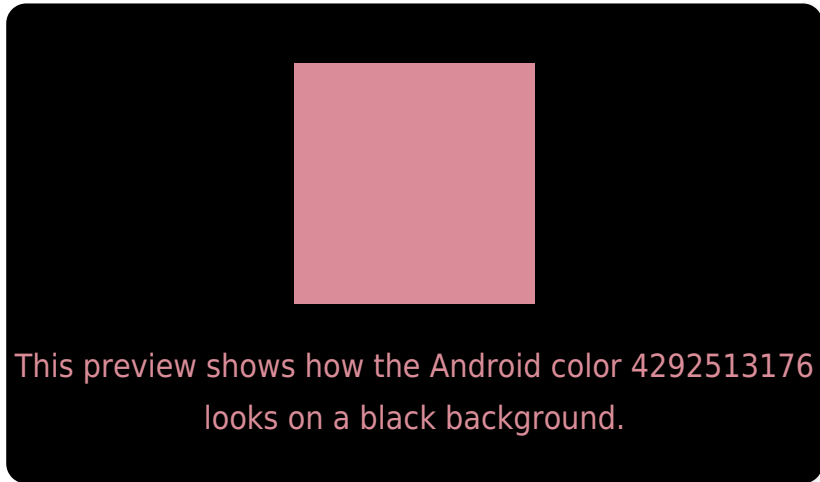
Large Text (above 18pt) WCAG AA × Fail

Any Text WCAG AA × Fail

Large Text (above 18pt) WCAG AAA × Fail

Any Text WCAG AAA × Fail

Black Background



Color Contrast Check

Large Text (above 18pt) WCAG AA ✓ Pass

Any Text WCAG AA ✓ Pass

Large Text (above 18pt) WCAG AAA ✓ Pass

Any Text WCAG AAA ✓ Pass

If you want to check with other color combinations, try the [Color Contrast Checker](#).

Android 4292513176 Background



This preview shows how black text looks on a background with the Android color 4292513176.




This preview shows how white text looks on a background with the Android color 4292513176.

Color Blindness Simulation

Color vision deficiency is a very complex topic, and I could not describe the different causes any better than Wikipedia does, so if you want to learn more, you should check out their [article about color blindness](#).

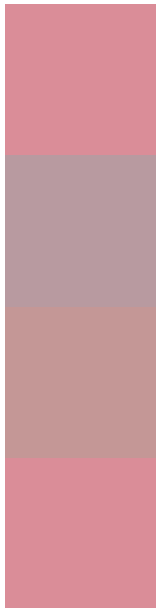
Dichromacy





Tritanopia
4292513176

Trichromacy



Original Color
4292513176

Protanomaly
4290288288

Deuteranomaly
4291073942

Tritanomaly
4292513176

Monochromacy



Original Color
4292513176

Achromatopsia
4289045925

Achromatomaly
4290288800

CSS Examples

Text

The CSS property to change the color of the text to Android 4292513176 is called "color". The color property can be set on classes, ids or directly on the HTML element.

This example shows how text in the color `rgb(218, 141, 152)` looks like.

```
.text, #text, p{  
    color:rgb(218, 141, 152)  
}
```

If you want to add a text shadow in that color use the text-shadow property, you can generate a text shadow directly with our [CSS Text Shadow Generator](#).

Here you see how black text with a 4 pixel rgb(218, 141, 152) colored shadow looks like.

```
.shadow{ text-shadow: 4px 4px 2px rgb(218, 141, 152) }
```

Border

The CSS property to change the border of an element to Android 4292513176 is called "border". The border property can be set on classes, ids or directly on the HTML element.

This example shows the color as border, it can be applied via the CSS property "border" or "border-color".

```
.border, #border, table{ border:4px solid rgb(218, 141, 152) }
```

If only the border color should be changed use the property `border-color`.

```
.border{ border-color:rgb(218, 141, 152) }
```

If you want to add a box shadow in that color use:

Here you see how a box with a 4 pixel `rgb(218, 141, 152)` colored shadow looks like.

```
.boxshadow{ -moz-box-shadow:4px 4px 4px  
4px rgb(218, 141, 152); -webkit-box-  
shadow:4px 4px 4px 4px rgb(218, 141, 152);  
box-shadow:4px 4px 4px 4px rgb(218, 141,  
152) }
```

Background

The CSS property to change the background color of an element to Android 4292513176 is called "background". The background property can be set on classes, ids or directly on the HTML element.

```
.background, #background, body{  
background: rgb(218, 141, 152) }
```

If only the background color should be changed can be used:

```
.background{ background-color: rgb(218,  
141, 152) }
```

This example shows the color as background, it is applied via the CSS property "background".

To optimize and compress your CSS code, you can use our [online CSS compressor and optimizer](#) based on csstidy. If you want to create a linear or radial gradient as background or border, check our [CSS Gradient Generator](#).

Hey! You found this booklet interesting? Support Converting Colors with the new Membership Option!

The pro membership hides all ads, plus gives you double the colors in the color bucket, and more awesome pro features!

[Learn more, Memberships starting at \\$2.50/m!](#)

**Follow me
on Twitter!**

@ConvertingColor