

Converting Colors

Android(4292516711)

Have a look what the booklet for
Android(4292516711) contains.

Android(4292516711)	3
<i>Conversions</i>	4
<i>Details</i>	6
<i>Harmonies</i>	11
<i>Previews</i>	23
<i>Color Blindness Simulation</i>	26
<i>CSS Examples</i>	29

Color

Android(4292516711)

Conversions

Conversions Part 1

Format	Color
Hex	DA9B67
RGB	218, 155, 103
RGB Percent	85%, 61%, 40%
CMY	0.1451, 0.3922, 0.5961
CMYK	0.00, 0.29, 0.53, 0.15
HSL	27°, 61%, 63%
HSV	27°, 53%, 85%
XYZ	43.0830, 39.3274, 18.1522
YIQ	167.9090, 54.2400, -2.8160

Conversions

Conversions Part 2

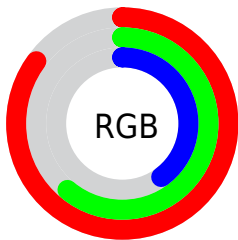
Format	Color
R _Y B	218, 198, 103
Decimal	14326631
CIE Lab	68.99, 17.76, 36.46
CIE LCh	69, 40.551, 64.030
Yxy	39.3274, 0.4284, 0.3911
Android (android.graphics.Color)	4292516711 (0xFFDA9B67)
YUV	167.9090, -32.0001, 43.9298
Hunter-Lab	62.7116, 12.8847, 26.7363

Details

The Android color **4292516711** is a light color, and the websafe version is hex **CC9966**. A complement of this color would be **4284983002**, and the grayscale version is **4289243304**.

A 20% lighter version of the original color is **4294955675**, and **4288702518** is the 20% darker color. If you saturate the color by 10%, you get **4292513617**, and if you desaturate by 10%, it is **4292519805**.

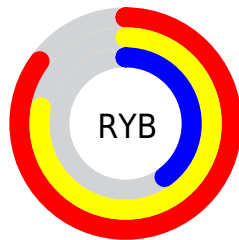
Distribution



Red (85%)

Green (61%)

Blue (40%)



Red (85%)

Yellow (78%)

Blue (40%)

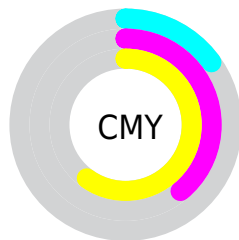


Cyan (0%)

Magenta (29%)

Yellow (53%)

Black (15%)



Cyan (15%)

Magenta (39%)

Yellow (60%)

Brightness & Saturation Gradients

These gradients show how the Android color 4292516711 changes by changing the brightness by 10 percent. The first figure shows a shift by +10% for each color and the second figure -10%.

Similar to the brightness gradients but the following saturation gradients show a change of the Android color 4292516711 by changing the saturation by 10% instead.



4292516711



4292516711

4294967295



4290609486



4294955675



4288702518



4294962870



4286861087



4294967250



4285020167



4294967278



4283310592



4281535744



4279894017



4278190080



4292516711



4292516711

 4292513617

 4292519805

 4292510523

 4292522899

 4292507430

 4292525992

 4292504336

 4292529086

 4292502272

 4292532180

 4292535274

 4292538367

 4292541439

 4292542463

Harmonies

Analogous

The Analogous color harmony consists of three colors that are next to each other on the color wheel.



4293693569



4292516711



4290488414

Triad

The Triadic color harmony groups three colors that are evenly spaced from another and form a triangle on the color wheel.



4292516711



4280925356



4289961445

Complementary

The Complementary color scheme is a pair of colors which are on the opposite of each other on the color wheel.



4292516711



4284983002

Split Complementary

Split-complementary colors differ from the complementary color scheme. The scheme consists of three colors, the original color and two neighbors of the complement color.



4286163697



4292516711



4278237904

Square

The Square scheme is like the rectangle color scheme, but the four colors are evenly spaced on the color wheel.



4292516711



4284987783



4280989162



4292514249

Rectangle

The Rectangle color scheme consists of four colors that form a rectangle on the color wheel.



4292516711



4288851812



4280989162



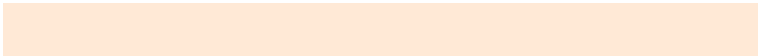
4288783083

Sweetspot

The Sweet Spot groups the original color and five complimentary colors.



4292516711



4294961622



4292503462



4286607975



4278190080



4286611584

Same Dimension

The Same Dimension uses a secret algorithm to generate beautiful new colors.



4292516711



4294944606



4292531303



4285425763



4289547776



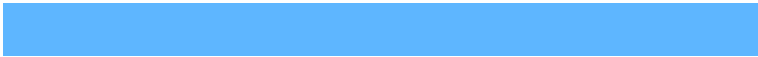
4281210112

Inverse Universe

The Inverse Universe completely reimagines the original color for something new.



4284983002



4284397311



4284968410



4284705134



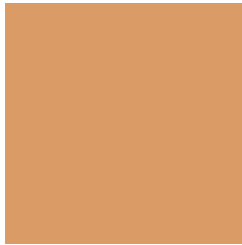
4278214573



4278196526

Previews

White Background



This preview shows how the Android color 4292516711 looks on a white background.

Color Contrast Check

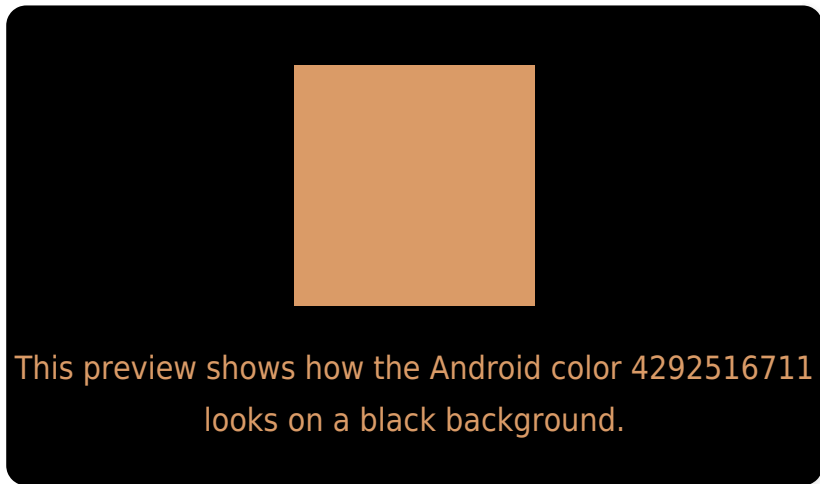
Large Text (above 18pt) WCAG AA × Fail

Any Text WCAG AA × Fail

Large Text (above 18pt) WCAG AAA × Fail

Any Text WCAG AAA × Fail

Black Background



Color Contrast Check

Large Text (above 18pt) WCAG AA ✓ Pass

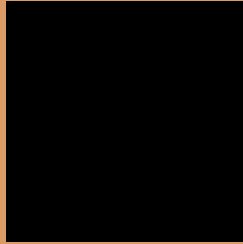
Any Text WCAG AA ✓ Pass

Large Text (above 18pt) WCAG AAA ✓ Pass

Any Text WCAG AAA ✓ Pass

If you want to check with other color combinations, try the [Color Contrast Checker](#).

Android 4292516711 Background



This preview shows how black text looks on a background with the Android color 4292516711.



This preview shows how white text looks on a background with the Android color 4292516711.

Color Blindness Simulation

Color vision deficiency is a very complex topic, and I could not describe the different causes any better than Wikipedia does, so if you want to learn more, you should check out their [article about color blindness](#).

Dichromacy

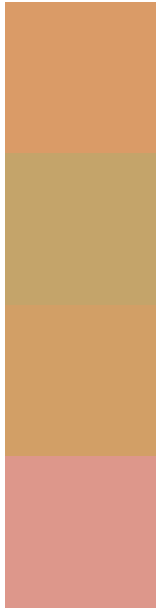


Original Color
4292516711

Protanopia
4290292076

Deuteranopia
4291666278

Trichromacy



Original Color
4292516711

Protanomaly
4291077226

Deuteranomaly
4291993446

Tritanomaly
4292712331

Monochromacy



Original Color
4292516711

Achromatopsia
4289243304

Achromatomaly
4290421648

CSS Examples

Text

The CSS property to change the color of the text to Android 4292516711 is called "color". The color property can be set on classes, ids or directly on the HTML element.

This example shows how text in the color `rgb(218, 155, 103)` looks like.

```
.text, #text, p{  
    color:rgb(218, 155, 103)  
}
```

If you want to add a text shadow in that color use the text-shadow property, you can generate a text shadow directly with our [CSS Text Shadow Generator](#).

Here you see how black text with a 4 pixel rgb(218, 155, 103) colored shadow looks like.

```
.shadow{ text-shadow: 4px 4px 2px rgb(218, 155, 103) }
```

Border

The CSS property to change the border of an element to Android 4292516711 is called "border". The border property can be set on classes, ids or directly on the HTML element.

This example shows the color as border, it can be applied via the CSS property "border" or "border-color".

```
.border, #border, table{ border:4px solid rgb(218, 155, 103) }
```

If only the border color should be changed use the property `border-color`.

```
.border{ border-color:rgb(218, 155, 103) }
```

If you want to add a box shadow in that color use:

Here you see how a box with a 4 pixel `rgb(218, 155, 103)` colored shadow looks like.

```
.boxshadow{ -moz-box-shadow:4px 4px 4px  
4px rgb(218, 155, 103); -webkit-box-  
shadow:4px 4px 4px 4px rgb(218, 155, 103);  
box-shadow:4px 4px 4px 4px rgb(218, 155,  
103) }
```

Background

The CSS property to change the background color of an element to Android 4292516711 is called "background". The background property can be set on classes, ids or directly on the HTML element.

```
.background, #background, body{  
background: rgb(218, 155, 103) }
```

If only the background color should be changed can be used:

```
.background{ background-color: rgb(218,  
155, 103) }
```

This example shows the color as background, it is applied via the CSS property "background".

To optimize and compress your CSS code, you can use our [online CSS compressor and optimizer](#) based on csstidy. If you want to create a linear or radial gradient as background or border, check our [CSS Gradient Generator](#).

Hey! You found this booklet interesting? Support Converting Colors with the new Membership Option!

The pro membership hides all ads, plus gives you double the colors in the color bucket, and more awesome pro features!

[Learn more, Memberships starting at \\$2.50/m!](#)

**Follow me
on Twitter!**

@ConvertingColor