

Converting Colors

Android(4292519859)

Have a look what the booklet for
Android(4292519859) contains.

Android(4292519859)	3
<i>Conversions</i>	4
<i>Details</i>	6
<i>Harmonies</i>	11
<i>Previews</i>	23
<i>Color Blindness Simulation</i>	26
<i>CSS Examples</i>	29

Color

Android(4292519859)

Conversions

Conversions Part 1

Format	Color
Hex	DAA7B3
RGB	218, 167, 179
RGB Percent	85%, 65%, 70%
CMY	0.1451, 0.3451, 0.2980
CMYK	0.00, 0.23, 0.18, 0.15
HSL	346°, 41%, 75%
HSV	346°, 23%, 85%
XYZ	50.8688, 45.7975, 48.8066
YIQ	183.6170, 26.5440, 14.5440

Conversions

Conversions Part 2

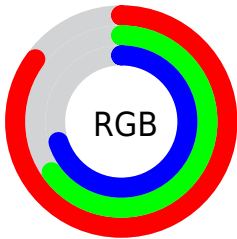
Format	Color
R_{YB}	218, 167, 179
Decimal	14329779
CIE _{Lab}	73.41, 20.55, 1.10
CIE _{LCh}	73, 20.576, 3.063
Yxy	45.7975, 0.3497, 0.3148
Android (android.graphics.Color)	4292519859 (0xFFDAA7B3)
YUV	183.6170, -2.2762, 30.1539
Hunter-Lab	67.6739, 15.7449, 4.6116

Details

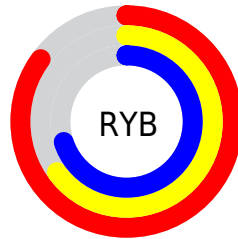
The Android color `4292519859` is a light color, and the websafe version is hex `CC9999`. A complement of this color would be `4289190606`, and the grayscale version is `4290295992`.

A 20% lighter version of the original color is `4294958827`, and `4288836478` is the 20% darker color. If you saturate the color by 10%, you get `4292514210`, and if you desaturate by 10%, it is `4292525508`.

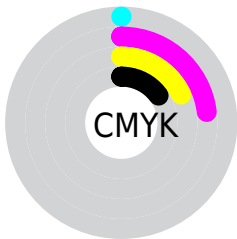
Distribution



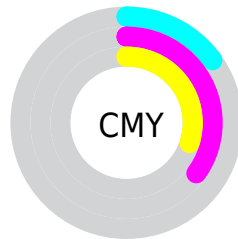
- Red (85%)
- Green (65%)
- Blue (70%)



- Red (85%)
- Yellow (65%)
- Blue (70%)



- Cyan (0%)
- Magenta (23%)
- Yellow (18%)
- Black (15%)



- Cyan (15%)
- Magenta (35%)
- Yellow (30%)

Brightness & Saturation Gradients

These gradients show how the Android color 4292519859 changes by changing the brightness by 10 percent. The first figure shows a shift by +10% for each color and the second figure -10%.

Similar to the brightness gradients but the following saturation gradients show a change of the Android color 4292519859 by changing the saturation by 10% instead.

 4292519859

 4292519859

4294967295

 4290677912

 4294958827

 4288836478

 4294966271

 4287126117

 4285416013

 4283706167

 4282127649

 4280745995

 4278190080

 4292519859

 4292519859

 4292514210

 4292525508

 4292508562

 4292531156

 4292503169

 4292536549

 4292497520

 4292542198

 4292491872

 4292542463

 4292486223

 4292480574

 4292476979

Harmonies

Analogous

The Analogous color harmony consists of three colors that are next to each other on the color wheel.



4291799494



4292519859



4292585889

Triad

The Triadic color harmony groups three colors that are evenly spaced from another and form a triangle on the color wheel.



4292519859



4289509780



4287347669

Complementary

The Complementary color scheme is a pair of colors which are on the opposite of each other on the color wheel.



4292519859



4289190606

Split Complementary

Split-complementary colors differ from the complementary color scheme. The scheme consists of three colors, the original color and two neighbors of the complement color.



4286693064



4292519859



4288134563

Square

The Square scheme is like the rectangle color scheme, but the four colors are evenly spaced on the color wheel.



4292519859



4290884751



4287020982



4288787930

Rectangle

The Rectangle color scheme consists of four colors that form a rectangle on the color wheel.



4292519859



4292258967



4287020982



4287020242

Sweetspot

The Sweet Spot groups the original color and five complimentary colors.



4292519859



4294962673



4291667930



4286608760



4278190080



4286611584

Same Dimension

The Same Dimension uses a secret algorithm to generate beautiful new colors.



4292519859



4294949064



4292523175



4285424485



4289527849



4281204747

Inverse Universe

The Inverse Universe completely reimagines the original color for something new.



4292519859



4294949064



4289187290



4285424485



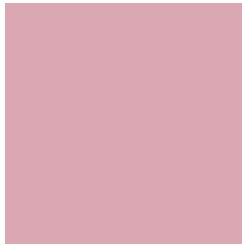
4289527849



4281204747

Previews

White Background



This preview shows how the Android color 4292519859 looks on a white background.

Color Contrast Check

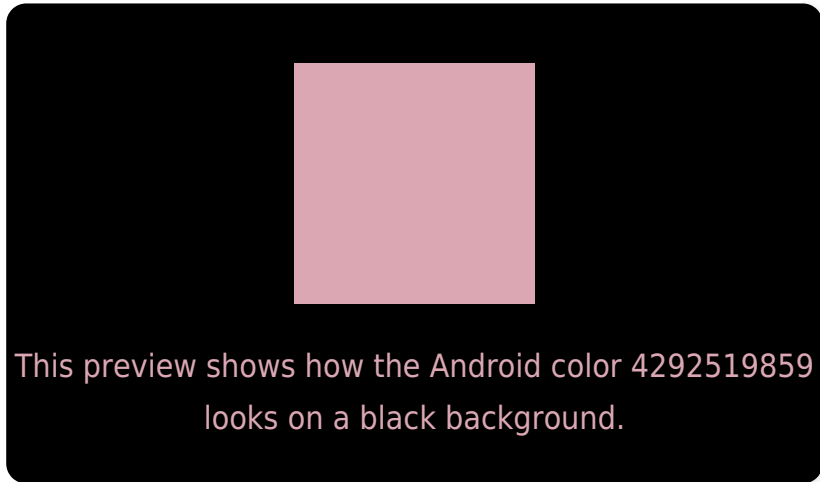
Large Text (above 18pt) WCAG AA × Fail

Any Text WCAG AA × Fail

Large Text (above 18pt) WCAG AAA × Fail

Any Text WCAG AAA × Fail

Black Background



Color Contrast Check

Large Text (above 18pt) WCAG AA ✓ Pass

Any Text WCAG AA ✓ Pass

Large Text (above 18pt) WCAG AAA ✓ Pass

Any Text WCAG AAA ✓ Pass

If you want to check with other color combinations, try the [Color Contrast Checker](#).

Android 4292519859 Background



This preview shows how black text looks on a background with the Android color 4292519859.



This preview shows how white text looks on a background with the Android color 4292519859.

Color Blindness Simulation

Color vision deficiency is a very complex topic, and I could not describe the different causes any better than Wikipedia does, so if you want to learn more, you should check out their [article about color blindness](#).


Dichromacy



Original Color
4292519859

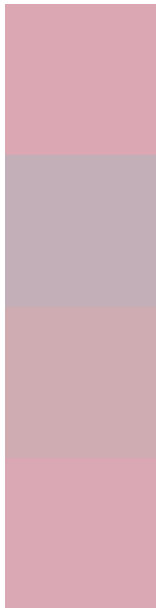
Protanopia
4290163898

Deuteranopia
4291276722



Tritanopia
4292519860

Trichromacy



Original Color
4292519859

Protanomaly
4291014583

Deuteranomaly
4291734706

Tritanomaly
4292519860

Monochromacy



Original Color
4292519859

Achromatopsia
4290295992

Achromatomaly
4291080886

CSS Examples

Text

The CSS property to change the color of the text to Android 4292519859 is called "color". The color property can be set on classes, ids or directly on the HTML element.

This example shows how text in the color `rgb(218, 167, 179)` looks like.

```
.text, #text, p{  
    color:rgb(218, 167, 179)  
}
```

If you want to add a text shadow in that color use the text-shadow property, you can generate a text shadow directly with our [CSS Text Shadow Generator](#).

Here you see how black text with a 4 pixel rgb(218, 167, 179) colored shadow looks like.

```
.shadow{ text-shadow: 4px 4px 2px rgb(218, 167, 179) }
```

Border

The CSS property to change the border of an element to Android 4292519859 is called "border". The border property can be set on classes, ids or directly on the HTML element.

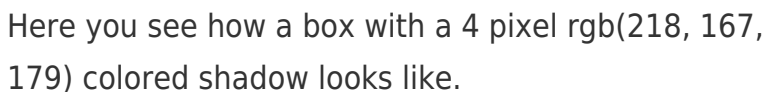
This example shows the color as border, it can be applied via the CSS property "border" or "border-color".

```
.border, #border, table{ border:4px solid rgb(218, 167, 179) }
```

If only the border color should be changed use the property `border-color`.

```
.border{ border-color:rgb(218, 167, 179) }
```

If you want to add a box shadow in that color use:



Here you see how a box with a 4 pixel `rgb(218, 167, 179)` colored shadow looks like.

```
.boxshadow{ -moz-box-shadow:4px 4px 4px 4px rgb(218, 167, 179); -webkit-box-shadow:4px 4px 4px 4px rgb(218, 167, 179); box-shadow:4px 4px 4px 4px rgb(218, 167, 179) }
```

Background

The CSS property to change the background color of an element to Android 4292519859 is called "background". The background property can be set on classes, ids or directly on the HTML element.

```
.background, #background, body{  
background: rgb(218, 167, 179) }
```

If only the background color should be changed can be used:

```
.background{ background-color: rgb(218,  
167, 179) }
```

This example shows the color as background, it is applied via the CSS property "background".

To optimize and compress your CSS code, you can use our [online CSS compressor and optimizer](#) based on csstidy. If you want to create a linear or radial gradient as background or border, check our [CSS Gradient Generator](#).

Hey! You found this booklet interesting? Support Converting Colors with the new Membership Option!

The pro membership hides all ads, plus gives you double the colors in the color bucket, and more awesome pro features!

[Learn more, Memberships starting at \\$2.50/m!](#)

**Follow me
on Twitter!**

@ConvertingColor