

Converting Colors

Android(4292523170)

Have a look what the booklet for
Android(4292523170) contains.

Android(4292523170)	3
<i>Conversions</i>	4
<i>Details</i>	6
<i>Harmonies</i>	11
<i>Previews</i>	23
<i>Color Blindness Simulation</i>	26
<i>CSS Examples</i>	29

Color

Android(4292523170)

Conversions

Conversions Part 1

Format	Color
Hex	DAB4A2
RGB	218, 180, 162
RGB Percent	85%, 71%, 64%
CMY	0.1451, 0.2941, 0.3647
CMYK	0.00, 0.17, 0.26, 0.15
HSL	19°, 43%, 75%
HSV	19°, 26%, 85%
XYZ	51.7563, 50.1566, 41.1358
YIQ	189.3100, 28.4260, 2.4580

Conversions

Conversions Part 2

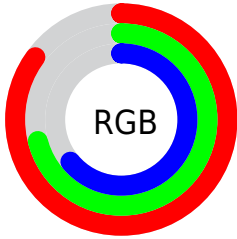
Format	Color
R _Y B	218, 189, 162
Decimal	14333090
CIE Lab	76.17, 11.03, 14.32
CIE LCh	76, 18.081, 52.388
Yxy	50.1566, 0.3618, 0.3506
Android (android.graphics.Color)	4292523170 (0xFFDAB4A2)
YUV	189.3100, -13.4638, 25.1611
Hunter-Lab	70.8213, 6.5107, 15.1370

Details

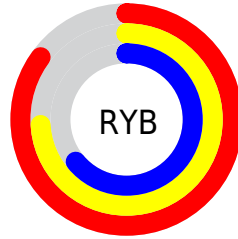
The Android color `4292523170` is a light color, and the websafe version is hex `CC9999`. A complement of this color would be `4288858330`, and the grayscale version is `4290624957`.

A 20% lighter version of the original color is `4294962393`, and `4288839534` is the 20% darker color. If you saturate the color by 10%, you get `4292519308`, and if you desaturate by 10%, it is `4292527032`.

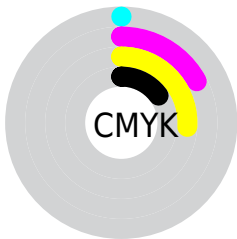
Distribution



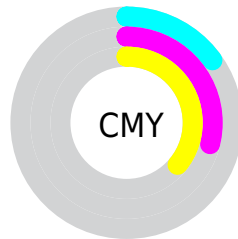
- Red (85%)
- Green (71%)
- Blue (64%)



- Red (85%)
- Yellow (74%)
- Blue (64%)



- Cyan (0%)
- Magenta (17%)
- Yellow (26%)
- Black (15%)



- Cyan (15%)
- Magenta (29%)
- Yellow (36%)

Brightness & Saturation Gradients

These gradients show how the Android color 4292523170 changes by changing the brightness by 10 percent. The first figure shows a shift by +10% for each color and the second figure -10%.

Similar to the brightness gradients but the following saturation gradients show a change of the Android color 4292523170 by changing the saturation by 10% instead.

 4292523170

 4292523170

4294967295

 4290681224

 4294962393

 4288839534

 4294967285

 4287063638

 4285353535

 4283709225

 4282130964

 4280683776

 4278190080

 4292523170

 4292523170

■ 4292519308

■ 4292527032

■ 4292515446

■ 4292530894

■ 4292511841

■ 4292534499

■ 4292507979

■ 4292538361

■ 4292504117

■ 4292542207

■ 4292500255

■ 4292542463

■ 4292496393

■ 4292494848

Harmonies

Analogous

The Analogous color harmony consists of three colors that are next to each other on the color wheel.



4292850096



4292523170



4291672475

Triad

The Triadic color harmony groups three colors that are evenly spaced from another and form a triangle on the color wheel.



4292523170



4288202167



4290361819

Complementary

The Complementary color scheme is a pair of colors which are on the opposite of each other on the color wheel.



4292523170



4288858330

Split Complementary

Split-complementary colors differ from the complementary color scheme. The scheme consists of three colors, the original color and two neighbors of the complement color.



4288987100



4292523170



4287677896

Square

The Square scheme is like the rectangle color scheme, but the four colors are evenly spaced on the color wheel.



4292523170



4289250215



4287939542



4291736784

Rectangle

The Rectangle color scheme consists of four colors that form a rectangle on the color wheel.



4292523170



4290952603



4287939542



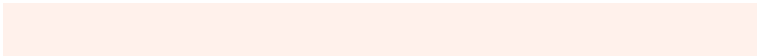
4289903580

Sweetspot

The Sweet Spot groups the original color and five complimentary colors.



4292523170



4294963691



4292518600



4286609267



4278190080



4286611584

Same Dimension

The Same Dimension uses a secret algorithm to generate beautiful new colors.



4292523170



4294953392



4292530338



4285425251



4289542144



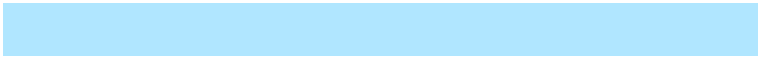
4281208576

Inverse Universe

The Inverse Universe completely reimagines the original color for something new.



4288858330



4289783551



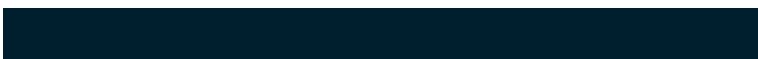
4288851162



4284705390



4278220461



4278198062

Previews

White Background



This preview shows how the Android color 4292523170 looks on a white background.

Color Contrast Check

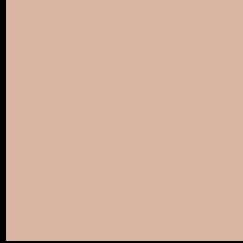
Large Text (above 18pt) WCAG AA × Fail

Any Text WCAG AA × Fail

Large Text (above 18pt) WCAG AAA × Fail

Any Text WCAG AAA × Fail

Black Background



This preview shows how the Android color 4292523170 looks on a black background.

Color Contrast Check

Large Text (above 18pt) WCAG AA ✓ Pass

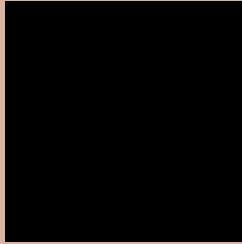
Any Text WCAG AA ✓ Pass

Large Text (above 18pt) WCAG AAA ✓ Pass

Any Text WCAG AAA ✓ Pass

If you want to check with other color combinations, try the [Color Contrast Checker](#).

Android 4292523170 Background



This preview shows how black text looks on a background with the Android color 4292523170.




This preview shows how white text looks on a background with the Android color 4292523170.

Color Blindness Simulation

Color vision deficiency is a very complex topic, and I could not describe the different causes any better than Wikipedia does, so if you want to learn more, you should check out their [article about color blindness](#).

Dichromacy





Tritanopia
4292718782

Trichromacy



Original Color
4292523170

Protanomaly
4291672229

Deuteranomaly
4292457890

Tritanomaly
4292653492

Monochromacy



Original Color
4292523170

Achromatopsia
4290624957

Achromatomaly
4291345075

CSS Examples

Text

The CSS property to change the color of the text to Android 4292523170 is called "color". The color property can be set on classes, ids or directly on the HTML element.

This example shows how text in the color `rgb(218, 180, 162)` looks like.

```
.text, #text, p{  
    color:rgb(218, 180, 162)  
}
```

If you want to add a text shadow in that color use the text-shadow property, you can generate a text shadow directly with our [CSS Text Shadow Generator](#).

Here you see how black text with a 4 pixel rgb(218, 180, 162) colored shadow looks like.

```
.shadow{ text-shadow: 4px 4px 2px rgb(218, 180, 162) }
```

Border

The CSS property to change the border of an element to Android 4292523170 is called "border". The border property can be set on classes, ids or directly on the HTML element.

This example shows the color as border, it can be applied via the CSS property "border" or "border-color".

```
.border, #border, table{ border:4px solid rgb(218, 180, 162) }
```

If only the border color should be changed use the property border-color.

```
.border{ border-color:rgb(218, 180, 162) }
```

If you want to add a box shadow in that color use:

Here you see how a box with a 4 pixel rgb(218, 180, 162) colored shadow looks like.

```
.boxshadow{ -moz-box-shadow:4px 4px 4px  
4px rgb(218, 180, 162); -webkit-box-  
shadow:4px 4px 4px 4px rgb(218, 180, 162);  
box-shadow:4px 4px 4px 4px rgb(218, 180,  
162) }
```

Background

The CSS property to change the background color of an element to Android 4292523170 is called "background". The background property can be set on classes, ids or directly on the HTML element.

```
.background, #background, body{  
background: rgb(218, 180, 162) }
```

If only the background color should be changed can be used:

```
.background{ background-color: rgb(218,  
180, 162) }
```

This example shows the color as background, it is applied via the CSS property "background".

To optimize and compress your CSS code, you can use our [online CSS compressor and optimizer](#) based on csstidy. If you want to create a linear or radial gradient as background or border, check our [CSS Gradient Generator](#).

Hey! You found this booklet interesting? Support Converting Colors with the new Membership Option!

The pro membership hides all ads, plus gives you double the colors in the color bucket, and more awesome pro features!

[Learn more, Memberships starting at \\$2.50/m!](#)

**Follow me
on Twitter!**

@ConvertingColor