

Converting Colors

Android(4292523443)

Have a look what the booklet for
Android(4292523443) contains.

Android(4292523443)	3
<i>Conversions</i>	4
<i>Details</i>	6
<i>Harmonies</i>	11
<i>Previews</i>	23
<i>Color Blindness Simulation</i>	26
<i>CSS Examples</i>	29

Color

Android(4292523443)

Conversions

Conversions Part 1

Format	Color
Hex	DAB5B3
RGB	218, 181, 179
RGB Percent	85%, 71%, 70%
CMY	0.1451, 0.2902, 0.2980
CMYK	0.00, 0.17, 0.18, 0.15
HSL	3°, 35%, 78%
HSV	3°, 18%, 85%
XYZ	53.5740, 51.2078, 49.7083
YIQ	191.8350, 22.6940, 7.2220

Conversions

Conversions Part 2

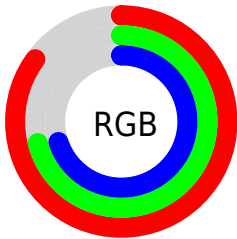
Format	Color
R _Y B	218, 181, 179
Decimal	14333363
CIE Lab	76.80, 13.00, 6.01
CIE LCh	77, 14.325, 24.800
Yxy	51.2078, 0.3468, 0.3315
Android (android.graphics.Color)	4292523443 (0xFFDAB5B3)
YUV	191.8350, -6.3277, 22.9467
Hunter-Lab	71.5597, 8.4068, 8.9065

Details

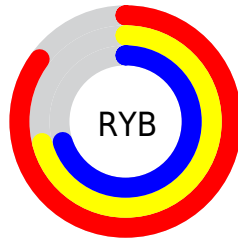
The Android color `4292523443` is a light color, and the websafe version is hex `CC9999`. A complement of this color would be `4289976538`, and the grayscale version is `4290822336`.

A 20% lighter version of the original color is `4294962667`, and `4288905342` is the 20% darker color. If you saturate the color by 10%, you get `4292518045`, and if you desaturate by 10%, it is `4292528841`.

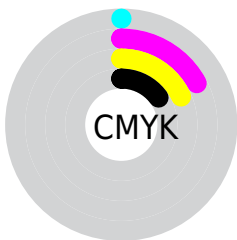
Distribution



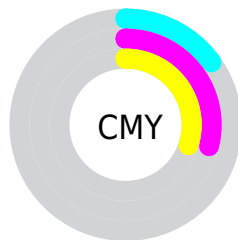
- Red (85%)
- Green (71%)
- Blue (70%)



- Red (85%)
- Yellow (71%)
- Blue (70%)



- Cyan (0%)
- Magenta (17%)
- Yellow (18%)
- Black (15%)



- Cyan (15%)
- Magenta (29%)
- Yellow (30%)

Brightness & Saturation Gradients

These gradients show how the Android color 4292523443 changes by changing the brightness by 10 percent. The first figure shows a shift by +10% for each color and the second figure -10%.

Similar to the brightness gradients but the following saturation gradients show a change of the Android color 4292523443 by changing the saturation by 10% instead.

 4292523443

 4292523443

4294967295

 4290681496

 4294962667

 4288905342

 4287129445

 4285419341

 4283775031

 4282196513

 4280749323

 4278190080

 4292523443

 4292523443

 4292518045

 4292528841

 4292512903

 4292533983

 4292507506

 4292539380

 4292502108

 4292542463

 4292496966

 4292491568

 4292486170

 4292481029

 4292479744

Harmonies

Analogous

The Analogous color harmony consists of three colors that are next to each other on the color wheel.



4292326848



4292523443



4292196520

Triad

The Triadic color harmony groups three colors that are evenly spaced from another and form a triangle on the color wheel.



4292523443



4289578158



4289576920

Complementary

The Complementary color scheme is a pair of colors which are on the opposite of each other on the color wheel.



4292523443



4289976538

Split Complementary

Split-complementary colors differ from the complementary color scheme. The scheme consists of three colors, the original color and two neighbors of the complement color.



4288725971



4292523443



4288791995

Square

The Square scheme is like the rectangle color scheme, but the four colors are evenly spaced on the color wheel.



4292523443



4290560165



4288464328



4290624470

Rectangle

The Rectangle color scheme consists of four colors that form a rectangle on the color wheel.



4292523443



4291803812



4288464328



4289249751

Sweetspot

The Sweet Spot groups the original color and five complimentary colors.



4292523443



4294964210



4292522968



4286609528



4278190080



4286611584

Same Dimension

The Same Dimension uses a secret algorithm to generate beautiful new colors.



4292523443



4294954185



4292528307



4285424483



4289530112



4281205248

Inverse Universe

The Inverse Universe completely reimagines the original color for something new.



4289976538



4291427583



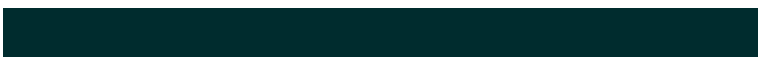
4289971674



4284706158



4278232493



4278201390

Previews

White Background



This preview shows how the Android color 4292523443 looks on a white background.

Color Contrast Check

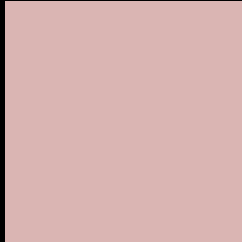
Large Text (above 18pt) WCAG AA × Fail

Any Text WCAG AA × Fail

Large Text (above 18pt) WCAG AAA × Fail

Any Text WCAG AAA × Fail

Black Background



This preview shows how the Android color 4292523443 looks on a black background.

Color Contrast Check

Large Text (above 18pt) WCAG AA ✓ Pass

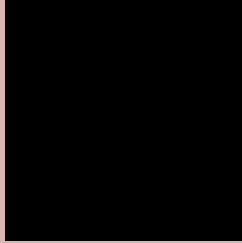
Any Text WCAG AA ✓ Pass

Large Text (above 18pt) WCAG AAA ✓ Pass

Any Text WCAG AAA ✓ Pass

If you want to check with other color combinations, try the [Color Contrast Checker](#).

Android 4292523443 Background



This preview shows how black text looks on a background with the Android color 4292523443.



This preview shows how white text looks on a background with the Android color 4292523443.

Color Blindness Simulation

Color vision deficiency is a very complex topic, and I could not describe the different causes any better than Wikipedia does, so if you want to learn more, you should check out their [article about color blindness](#).


Dichromacy



Original Color
4292523443

Protanopia
4291018167

Deuteranopia
4292130739



Tritanopia
4292654017

Trichromacy



Original Color
4292523443

Protanomaly
4291541686

Deuteranomaly
4292261555

Tritanomaly
4292588732

Monochromacy



Original Color
4292523443

Achromatopsia
4290822336

Achromatomaly
4291411131

CSS Examples

Text

The CSS property to change the color of the text to Android 4292523443 is called "color". The color property can be set on classes, ids or directly on the HTML element.

This example shows how text in the color `rgb(218, 181, 179)` looks like.

```
.text, #text, p{  
    color:rgb(218, 181, 179)  
}
```

If you want to add a text shadow in that color use the text-shadow property, you can generate a text shadow directly with our [CSS Text Shadow Generator](#).

Here you see how black text with a 4 pixel rgb(218, 181, 179) colored shadow looks like.

```
.shadow{ text-shadow: 4px 4px 2px rgb(218, 181, 179) }
```

Border

The CSS property to change the border of an element to Android 4292523443 is called "border". The border property can be set on classes, ids or directly on the HTML element.

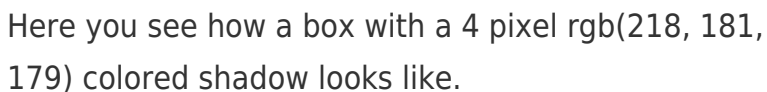
This example shows the color as border, it can be applied via the CSS property "border" or "border-color".

```
.border, #border, table{ border:4px solid rgb(218, 181, 179) }
```

If only the border color should be changed use the property `border-color`.

```
.border{ border-color:rgb(218, 181, 179) }
```

If you want to add a box shadow in that color use:



Here you see how a box with a 4 pixel `rgb(218, 181, 179)` colored shadow looks like.

```
.boxshadow{ -moz-box-shadow:4px 4px 4px 4px rgb(218, 181, 179); -webkit-box-shadow:4px 4px 4px 4px rgb(218, 181, 179); box-shadow:4px 4px 4px 4px rgb(218, 181, 179) }
```

Background

The CSS property to change the background color of an element to Android 4292523443 is called "background". The background property can be set on classes, ids or directly on the HTML element.

```
.background, #background, body{  
background: rgb(218, 181, 179) }
```

If only the background color should be changed can be used:

```
.background{ background-color: rgb(218,  
181, 179) }
```

This example shows the color as background, it is applied via the CSS property "background".

To optimize and compress your CSS code, you can use our [online CSS compressor and optimizer](#) based on csstidy. If you want to create a linear or radial gradient as background or border, check our [CSS Gradient Generator](#).

Hey! You found this booklet interesting? Support Converting Colors with the new Membership Option!

The pro membership hides all ads, plus gives you double the colors in the color bucket, and more awesome pro features!

[Learn more, Memberships starting at \\$2.50/m!](#)

**Follow me
on Twitter!**

@ConvertingColor