

Converting Colors

Android(4292527535)

Have a look what the booklet for
Android(4292527535) contains.

Android(4292527535)	3
<i>Conversions</i>	4
<i>Details</i>	6
<i>Harmonies</i>	11
<i>Previews</i>	23
<i>Color Blindness Simulation</i>	26
<i>CSS Examples</i>	29

Color

Android(4292527535)

Conversions

Conversions Part 1

Format	Color
Hex	DAC5AF
RGB	218, 197, 175
RGB Percent	85%, 77%, 69%
CMY	0.1451, 0.2275, 0.3137
CMYK	0.00, 0.10, 0.20, 0.15
HSL	31°, 37%, 77%
HSV	31°, 20%, 85%
XYZ	56.6176, 57.9331, 48.7556
YIQ	200.7710, 19.5780, -2.3900

Conversions

Conversions Part 2

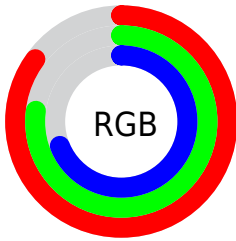
Format	Color
RYB	216, 218, 175
Decimal	14337455
CIELab	80.70, 3.88, 13.72
CIElCh	81, 14.257, 74.189
Yxy	57.9331, 0.3467, 0.3548
Android (android.graphics.Color)	4292527535 (0xFFDAC5AF)
YUV	200.7710, -12.7051, 15.1098
Hunter-Lab	76.1138, -0.4211, 15.3007

Details

The Android color `4292527535` is a light color, and the websafe version is hex `CCCCCC`. A complement of this color would be `4289709274`, and the grayscale version is `4291414473`.

A 20% lighter version of the original color is `4294967015`, and `4288909179` is the 20% darker color. If you saturate the color by 10%, you get `4292524697`, and if you desaturate by 10%, it is `4292530373`.

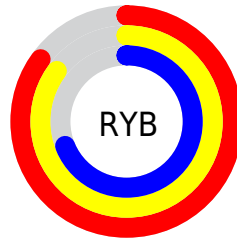
Distribution



Red (85%)

Green (77%)

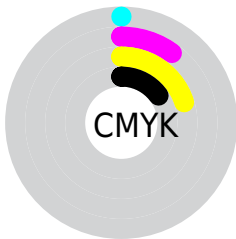
Blue (69%)



Red (85%)

Yellow (85%)

Blue (69%)

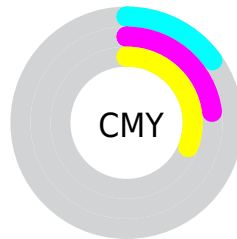


Cyan (0%)

Magenta (10%)

Yellow (20%)

Black (15%)



Cyan (15%)

Magenta (23%)

Yellow (31%)

Brightness & Saturation Gradients

These gradients show how the Android color 4292527535 changes by changing the brightness by 10 percent. The first figure shows a shift by +10% for each color and the second figure -10%.

Similar to the brightness gradients but the following saturation gradients show a change of the Android color 4292527535 by changing the saturation by 10% instead.

 4292527535

 4292527535

4294967295

 4290685588

 4294967015

 4288909179

 4287133282

 4285422922

 4283844147

 4282265374

 4280818182

 4279107584

 4278190080

 4292527535

 4292527535

 4292524697

 4292530373

 4292522115

 4292532955

 4292519278

 4292535792

 4292516440

 4292538623

 4292513858

 4292541183

 4292511020

 4292542463

 4292508182

 4292505601

 4292505600

Harmonies

Analogous

The Analogous color harmony consists of three colors that are next to each other on the color wheel.



4293116342



4292527535



4291611055

Triad

The Triadic color harmony groups three colors that are evenly spaced from another and form a triangle on the color wheel.



4292527535



4289188046



4292068315

Complementary

The Complementary color scheme is a pair of colors which are on the opposite of each other on the color wheel.



4292527535



4289709274

Split Complementary

Split-complementary colors differ from the complementary color scheme. The scheme consists of three colors, the original color and two neighbors of the complement color.



4290955234



4292527535



4289253338

Square

The Square scheme is like the rectangle color scheme, but the four colors are evenly spaced on the color wheel.



4292527535



4289712321



4289907938



4292853968

Rectangle

The Rectangle color scheme consists of four colors that form a rectangle on the color wheel.



4292527535



4290956466



4289907938



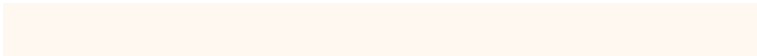
4291675358

Sweetspot

The Sweet Spot groups the original color and five complimentary colors.



4292527535



4294965488



4292521925



4286610295



4278190080



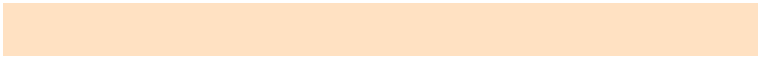
4286611584

Same Dimension

The Same Dimension uses a secret algorithm to generate beautiful new colors.



4292527535



4294959554



4292532911



4285425763



4289550592



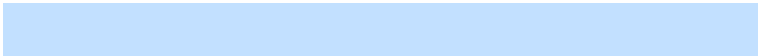
4281210624

Inverse Universe

The Inverse Universe completely reimagines the original color for something new.



4289709274



4290961663



4289703898



4284704878



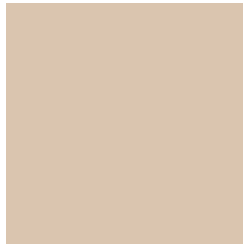
4278212013



4278195758

Previews

White Background



This preview shows how the Android color 4292527535 looks on a white background.

Color Contrast Check

Large Text (above 18pt) WCAG AA × Fail

Any Text WCAG AA × Fail

Large Text (above 18pt) WCAG AAA × Fail

Any Text WCAG AAA × Fail

Black Background



This preview shows how the Android color 4292527535 looks on a black background.

Color Contrast Check

Large Text (above 18pt) WCAG AA ✓ Pass

Any Text WCAG AA ✓ Pass

Large Text (above 18pt) WCAG AAA ✓ Pass

Any Text WCAG AAA ✓ Pass

If you want to check with other color combinations, try the [Color Contrast Checker](#).

Android 4292527535 Background



This preview shows how black text looks on a background with the Android color 4292527535.



This preview shows how white text looks on a background with the Android color 4292527535.

Color Blindness Simulation

Color vision deficiency is a very complex topic, and I could not describe the different causes any better than Wikipedia does, so if you want to learn more, you should check out their [article about color blindness](#).

Dichromacy



Original Color
4292527535

Protanopia
4292004016

Deuteranopia
4293247408



Tritanopia
4292788431

Trichromacy



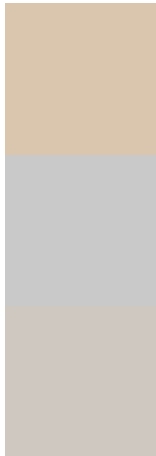
Original Color
4292527535

Protanomaly
4292200368

Deuteranomaly
4292985520

Tritanomaly
4292723395

Monochromacy



Original Color
4292527535

Achromatopsia
4291414473

Achromatomaly
4291807424

CSS Examples

Text

The CSS property to change the color of the text to Android 4292527535 is called "color". The color property can be set on classes, ids or directly on the HTML element.

This example shows how text in the color `rgb(218, 197, 175)` looks like.

```
.text, #text, p{  
    color:rgb(218, 197, 175)  
}
```

If you want to add a text shadow in that color use the text-shadow property, you can generate a text shadow directly with our [CSS Text Shadow Generator](#).

Here you see how black text with a 4 pixel rgb(218, 197, 175) colored shadow looks like.

```
.shadow{ text-shadow: 4px 4px 2px rgb(218, 197, 175) }
```

Border

The CSS property to change the border of an element to Android 4292527535 is called "border". The border property can be set on classes, ids or directly on the HTML element.

This example shows the color as border, it can be applied via the CSS property "border" or "border-color".

```
.border, #border, table{ border:4px solid rgb(218, 197, 175) }
```

If only the border color should be changed use the property border-color.

```
.border{ border-color:rgb(218, 197, 175) }
```

If you want to add a box shadow in that color use:

Here you see how a box with a 4 pixel rgb(218, 197, 175) colored shadow looks like.

```
.boxshadow{ -moz-box-shadow:4px 4px 4px  
4px rgb(218, 197, 175); -webkit-box-  
shadow:4px 4px 4px 4px rgb(218, 197, 175);  
box-shadow:4px 4px 4px 4px rgb(218, 197,  
175) }
```

Background

The CSS property to change the background color of an element to Android 4292527535 is called "background". The background property can be set on classes, ids or directly on the HTML element.

```
.background, #background, body{  
background: rgb(218, 197, 175) }
```

If only the background color should be changed can be used:

```
.background{ background-color: rgb(218,  
197, 175) }
```

This example shows the color as background, it is applied via the CSS property "background".

To optimize and compress your CSS code, you can use our [online CSS compressor and optimizer](#) based on csstidy. If you want to create a linear or radial gradient as background or border, check our [CSS Gradient Generator](#).

Hey! You found this booklet interesting? Support Converting Colors with the new Membership Option!

The pro membership hides all ads, plus gives you double the colors in the color bucket, and more awesome pro features!

[Learn more, Memberships starting at \\$2.50/m!](#)

**Follow me
on Twitter!**

@ConvertingColor