

# Converting Colors

Android(4292554081)

Have a look what the booklet for  
Android(4292554081) contains.

<b>Android(4292554081)</b> .....	3
<b><i>Conversions</i></b> .....	4
<b><i>Details</i></b> .....	6
<b><i>Harmonies</i></b> .....	11
<b><i>Previews</i></b> .....	23
<b><i>Color Blindness Simulation</i></b> .....	26
<b><i>CSS Examples</i></b> .....	29

# Color

**Android(4292554081)**

# Conversions

## Conversions Part 1

<b>Format</b>	<b>Color</b>
Hex	DB2D61
RGB	219, 45, 97
RGB Percent	86%, 18%, 38%
CMY	0.1412, 0.8235, 0.6196
CMYK	0.00, 0.79, 0.56, 0.14
HSL	342°, 71%, 52%
HSV	342°, 79%, 86%
XYZ	32.3095, 17.7999, 13.0421
YIQ	102.9540, 87.0120, 53.0600

# Conversions

## Conversions Part 2

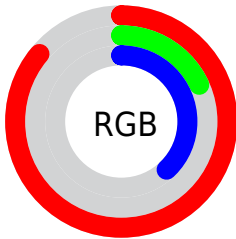
<b>Format</b>	<b>Color</b>
<a href="#">RYB</a>	<a href="#">219, 45, 97</a>
Decimal	<a href="#">14364001</a>
CIELab	<a href="#">49.25, 67.69, 13.92</a>
CIELCh	<a href="#">49, 69.108, 11.617</a>
Yxy	<a href="#">17.7999, 0.5116, 0.2819</a>
Android (android.graphics.Color)	<a href="#">4292554081 (0xFFDB2D61)</a>
YUV	<a href="#">102.9540, -2.9353, 101.7723</a>
Hunter-Lab	<a href="#">42.1899, 62.8647, 11.2048</a>

# Details

The Android color **4292554081** is a dark color, and the websafe version is hex **CC3366**. The color can be described as dark washed rose. A complement of this color would be **4281195431**, and the grayscale version is **4284966759**.

A 20% lighter version of the original color is **4294929555**, and **4288479283** is the 20% darker color. If you saturate the color by 10%, you get **4292548434**, and if you desaturate by 10%, it is **4292559728**.

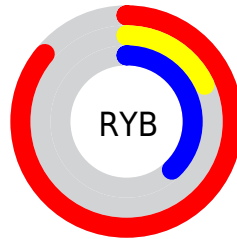
# Distribution



Red (86%)

Green (18%)

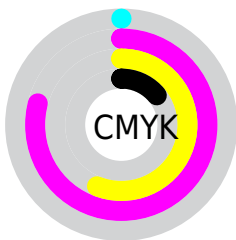
Blue (38%)



Red (86%)

Yellow (18%)

Blue (38%)

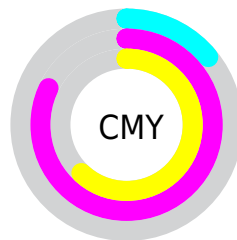


Cyan (0%)

Magenta (79%)

Yellow (56%)

Black (14%)



Cyan (14%)

Magenta (82%)

Yellow (62%)

# Brightness & Saturation Gradients

These gradients show how the Android color 4292554081 changes by changing the brightness by 10 percent. The first figure shows a shift by +10% for each color and the second figure -10%.

Similar to the brightness gradients but the following saturation gradients show a change of the Android color 4292554081 by changing the saturation by 10% instead.





4292554081



4292554081

4294967295



4290510921



4294929555



4288479283



4294937006



4286513183



4294944457



4284547078



4294952165



4282646531



4294959615



4280483841



4278190080



4292554081



4292554081



4292548434



4292559728

 4292542786

 4292565376

 4292542529

 4292571023

 4292576670

 4292582318

 4292587709

 4292593356

 4292599004

 4292604651

# Harmonies

## Analogous

The Analogous color harmony consists of three colors that are next to each other on the color wheel.



4291442843



4292554081



4291708713

# Triad

The Triadic color harmony groups three colors that are evenly spaced from another and form a triangle on the color wheel.



4292554081



4281501189



4278224613

# Complementary

The Complementary color scheme is a pair of colors which are on the opposite of each other on the color wheel.



4292554081



4281195431

# Split Complementary

Split-complementary colors differ from the complementary color scheme. The scheme consists of three colors, the original color and two neighbors of the complement color.



4278226370



4292554081



4278225998

# Square

The Square scheme is like the rectangle color scheme, but the four colors are evenly spaced on the color wheel.



4292554081



4286151168



4278226827



4278220265

# Rectangle

The Rectangle color scheme consists of four colors that form a rectangle on the color wheel.



4292554081



4290272256



4278226827



4278225372



# Sweetspot

The Sweet Spot groups the original color and five complimentary colors.



4292554081



4294951636



4289146331



4286602086



4278190080



4286611584



# Same Dimension

The Same Dimension uses a secret algorithm to generate beautiful new colors.



4292554081



4294905173



4292562989



4285424486



4289527860



4281204750



# Inverse Universe

The Inverse Universe completely reimagines the original color for something new.



4292554081



4294905173



4281186523



4285424486



4289527860



4281204750



# Previews

## White Background



This preview shows how the Android color 4292554081 looks on a white background.

## Color Contrast Check

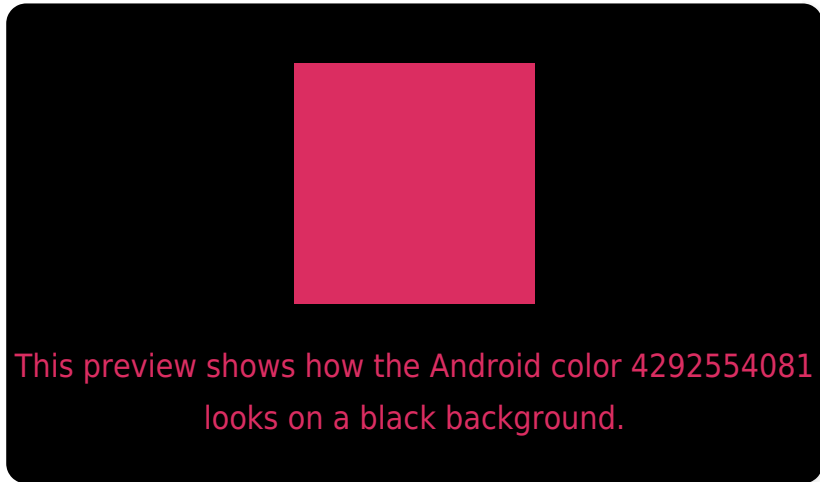
Large Text (above 18pt) WCAG AA ✓ Pass

Any Text WCAG AA ✓ Pass

Large Text (above 18pt) WCAG AAA ✓ Pass

Any Text WCAG AAA × Fail

# Black Background



## Color Contrast Check

Large Text (above 18pt) WCAG AA ✓ Pass

Any Text WCAG AA ✓ Pass

Large Text (above 18pt) WCAG AAA ✓ Pass

Any Text WCAG AAA × Fail

If you want to check with other color combinations, try the [Color Contrast Checker](#).



# Android 4292554081 Background



This preview shows how black text looks on a background with the Android color 4292554081.



This preview shows how white text looks on a background with the Android color 4292554081.

# Color Blindness Simulation

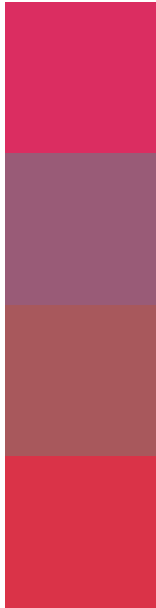
Color vision deficiency is a very complex topic, and I could not describe the different causes any better than Wikipedia does, so if you want to learn more, you should check out their [article about color blindness](#).

## Dichromacy





# Trichromacy



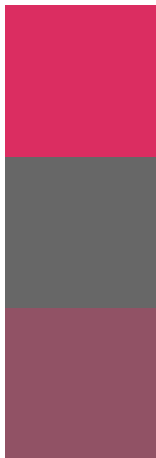
**Original Color**  
4292554081

**Protanomaly**  
4288240503

**Deuteranomaly**  
4289222748

**Tritanomaly**  
4292490056

# Monochromacy



**Original Color**  
4292554081

**Achromatopsia**  
4284966759

**Achromatomaly**  
4287713893

# CSS Examples

## Text

The CSS property to change the color of the text to Android 4292554081 is called "color". The color property can be set on classes, ids or directly on the HTML element.

This example shows how text in the color `rgb(219, 45, 97)` looks like.

```
.text, #text, p{  
    color:rgb(219, 45, 97)  
}
```

If you want to add a text shadow in that color use the text-shadow property, you can generate a text shadow directly with our [CSS Text Shadow Generator](#).

Here you see how black text with a 4 pixel rgb(219, 45, 97) colored shadow looks like.

```
.shadow{ text-shadow: 4px 4px 2px rgb(219, 45, 97) }
```

## Border

The CSS property to change the border of an element to Android 4292554081 is called "border". The border property can be set on classes, ids or directly on the HTML element.

This example shows the color as border, it can be applied via the CSS property "border" or "border-color".

```
.border, #border, table{ border:4px solid rgb(219, 45, 97) }
```

If only the border color should be changed use the property `border-color`.

```
.border{ border-color:rgb(219, 45, 97) }
```

If you want to add a box shadow in that color use:

Here you see how a box with a 4 pixel `rgb(219, 45, 97)` colored shadow looks like.

```
.boxshadow{ -moz-box-shadow:4px 4px 4px  
4px rgb(219, 45, 97); -webkit-box-  
shadow:4px 4px 4px 4px rgb(219, 45, 97);  
box-shadow:4px 4px 4px 4px rgb(219, 45,  
97) }
```

# Background

The CSS property to change the background color of an element to Android 4292554081 is called "background". The background property can be set on classes, ids or directly on the HTML element.

```
.background, #background, body{  
background: rgb(219, 45, 97) }
```

If only the background color should be changed can be used:

```
.background{ background-color: rgb(219, 45,  
97) }
```

This example shows the color as background, it is applied via the CSS property "background".

To optimize and compress your CSS code, you can use our [online CSS compressor and optimizer](#) based on csstidy. If you want to create a linear or radial gradient as background or border, check our [CSS Gradient Generator](#).



Hey! You found this booklet interesting? Support Converting Colors with the new Membership Option!

The pro membership hides all ads, plus gives you double the colors in the color bucket, and more awesome pro features!

**[Learn more, Memberships starting at \\$2.50/m!](#)**

**Follow me  
on Twitter!**

@ConvertingColor