

Converting Colors

Android(4292558972)

Have a look what the booklet for
Android(4292558972) contains.

Android(4292558972)	3
<i>Conversions</i>	4
<i>Details</i>	6
<i>Harmonies</i>	11
<i>Previews</i>	23
<i>Color Blindness Simulation</i>	26
<i>CSS Examples</i>	29

Color

Android(4292558972)

Conversions

Conversions Part 1

Format	Color
Hex	DB407C
RGB	219, 64, 124
RGB Percent	86%, 25%, 49%
CMY	0.1412, 0.7490, 0.5137
CMYK	0.00, 0.71, 0.43, 0.14
HSL	337°, 68%, 55%
HSV	337°, 71%, 86%
XYZ	34.6849, 20.1821, 21.1362
YIQ	117.1850, 73.1200, 51.5200

Conversions

Conversions Part 2

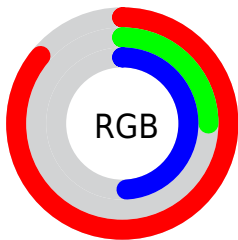
Format	Color
RYB	219, 64, 124
Decimal	14368892
CIELab	52.04, 64.02, 1.51
CIElCh	52, 64.035, 1.353
Yxy	20.1821, 0.4564, 0.2655
Android (android.graphics.Color)	4292558972 (0xFFDB407C)
YUV	117.1850, 3.3598, 89.2918
Hunter-Lab	44.9245, 59.1969, 3.5522

Details

The Android color **4292558972** is a dark color, and the websafe version is hex **CC3366**. The color can be described as middle muted rose. A complement of this color would be **4282440607**, and the grayscale version is **4285887861**.

A 20% lighter version of the original color is **4294933424**, and **4288610379** is the 20% darker color. If you saturate the color by 10%, you get **4292553327**, and if you desaturate by 10%, it is **4292564617**.

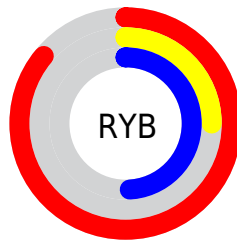
Distribution



Red (86%)

Green (25%)

Blue (49%)



Red (86%)

Yellow (25%)

Blue (49%)

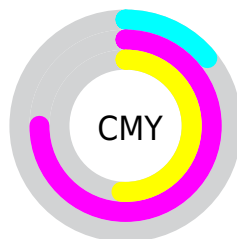


Cyan (0%)

Magenta (71%)

Yellow (43%)

Black (14%)



Cyan (14%)

Magenta (75%)

Yellow (51%)

Brightness & Saturation Gradients

These gradients show how the Android color 4292558972 changes by changing the brightness by 10 percent. The first figure shows a shift by +10% for each color and the second figure -10%.

Similar to the brightness gradients but the following saturation gradients show a change of the Android color 4292558972 by changing the saturation by 10% instead.



4292558972



4292558972

4294967295



4290583651



4294933424



4288610379



4294940620



4286644277



4294948072



4284743712



4294955519



4282974215



4294963199



4280942593



4278190080



4292558972



4292558972



4292553327



4292564617

 4292547681

 4292570263

 4292542549

 4292575908

 4292581554

 4292586943

 4292592589

 4292598234

 4292603879

 4292607989

Harmonies

Analogous

The Analogous color harmony consists of three colors that are next to each other on the color wheel.



4290728370



4292558972



4292365382

Triad

The Triadic color harmony groups three colors that are evenly spaced from another and form a triangle on the color wheel.



4292558972



4284254469



4278226908

Complementary

The Complementary color scheme is a pair of colors which are on the opposite of each other on the color wheel.



4292558972



4282440607

Split Complementary

Split-complementary colors differ from the complementary color scheme. The scheme consists of three colors, the original color and two neighbors of the complement color.



4278228148



4292558972



4278227268

Square

The Square scheme is like the rectangle color scheme, but the four colors are evenly spaced on the color wheel.



4292558972



4287855360



4278228349



4278223595

Rectangle

The Rectangle color scheme consists of four colors that form a rectangle on the color wheel.



4292558972



4291386405



4278228349



4278227665

Sweetspot

The Sweet Spot groups the original color and five complimentary colors.



4292558972



4294953438



4288495835



4286603372



4278190080



4286611584

Same Dimension

The Same Dimension uses a secret algorithm to generate beautiful new colors.



4292558972



4294911610



4292563008



4285424487



4289527875



4281204754

Inverse Universe

The Inverse Universe completely reimagines the original color for something new.



4292558972



4294911610



4282436571



4285424487



4289527875



4281204754

Previews

White Background



This preview shows how the Android color 4292558972 looks on a white background.

Color Contrast Check

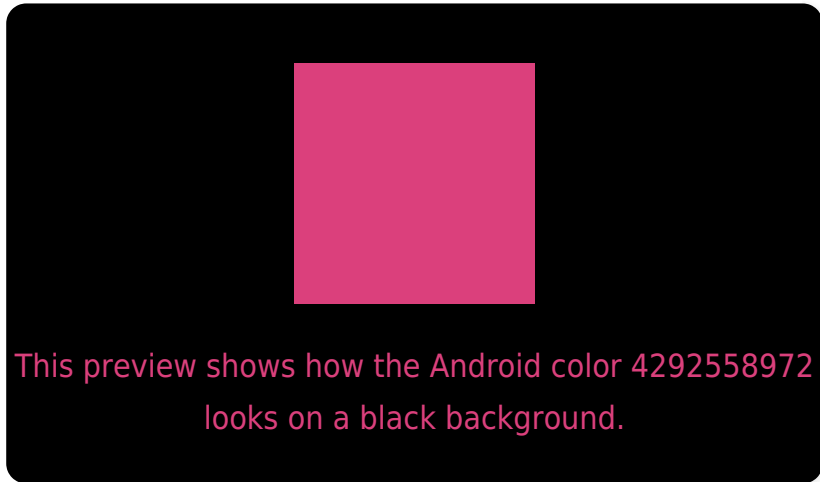
Large Text (above 18pt) WCAG AA ✓ Pass

Any Text WCAG AA ✗ Fail

Large Text (above 18pt) WCAG AAA ✗ Fail

Any Text WCAG AAA ✗ Fail

Black Background



Color Contrast Check

Large Text (above 18pt) WCAG AA ✓ Pass

Any Text WCAG AA ✓ Pass

Large Text (above 18pt) WCAG AAA ✓ Pass

Any Text WCAG AAA × Fail

If you want to check with other color combinations, try the [Color Contrast Checker](#).

Android 4292558972 Background



This preview shows how black text looks on a background with the Android color 4292558972.

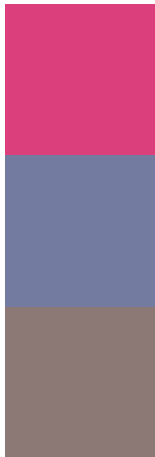


This preview shows how white text looks on a background with the Android color 4292558972.

Color Blindness Simulation

Color vision deficiency is a very complex topic, and I could not describe the different causes any better than Wikipedia does, so if you want to learn more, you should check out their [article about color blindness](#).

Dichromacy

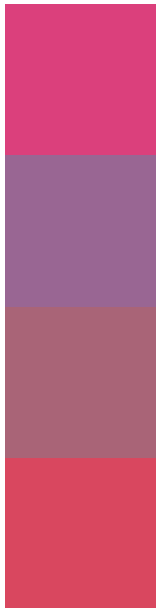


Original Color
4292558972

Protanopia
4285758368

Deuteranopia
4287395956

Trichromacy



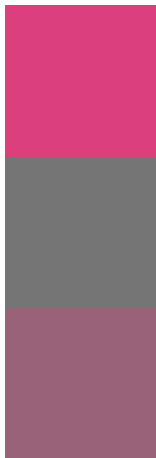
Original Color
4292558972

Protanomaly
4288243347

Deuteranomaly
4289291383

Tritanomaly
4292429663

Monochromacy



Original Color
4292558972

Achromatopsia
4285887861

Achromatomaly
4288307832

CSS Examples

Text

The CSS property to change the color of the text to Android 4292558972 is called "color". The color property can be set on classes, ids or directly on the HTML element.

This example shows how text in the color `rgb(219, 64, 124)` looks like.

```
.text, #text, p{  
    color:rgb(219, 64, 124)  
}
```

If you want to add a text shadow in that color use the text-shadow property, you can generate a text shadow directly with our [CSS Text Shadow Generator](#).

Here you see how black text with a 4 pixel rgb(219, 64, 124) colored shadow looks like.

```
.shadow{ text-shadow: 4px 4px 2px rgb(219, 64, 124) }
```

Border

The CSS property to change the border of an element to Android 4292558972 is called "border". The border property can be set on classes, ids or directly on the HTML element.

This example shows the color as border, it can be applied via the CSS property "border" or "border-color".

```
.border, #border, table{ border:4px solid rgb(219, 64, 124) }
```

If only the border color should be changed use the property `border-color`.

```
.border{ border-color:rgb(219, 64, 124) }
```

If you want to add a box shadow in that color use:

Here you see how a box with a 4 pixel `rgb(219, 64, 124)` colored shadow looks like.

```
.boxshadow{ -moz-box-shadow:4px 4px 4px  
4px rgb(219, 64, 124); -webkit-box-  
shadow:4px 4px 4px 4px rgb(219, 64, 124);  
box-shadow:4px 4px 4px 4px rgb(219, 64,  
124) }
```

Background

The CSS property to change the background color of an element to Android 4292558972 is called "background". The background property can be set on classes, ids or directly on the HTML element.

```
.background, #background, body{  
background: rgb(219, 64, 124) }
```

If only the background color should be changed can be used:

```
.background{ background-color: rgb(219, 64,  
124) }
```

This example shows the color as background, it is applied via the CSS property "background".

To optimize and compress your CSS code, you can use our [online CSS compressor and optimizer](#) based on csstidy. If you want to create a linear or radial gradient as background or border, check our [CSS Gradient Generator](#).

Hey! You found this booklet interesting? Support Converting Colors with the new Membership Option!

The pro membership hides all ads, plus gives you double the colors in the color bucket, and more awesome pro features!

[Learn more, Memberships starting at \\$2.50/m!](#)

**Follow me
on Twitter!**

@ConvertingColor