

# Converting Colors

Android(4292565376)

Have a look what the booklet for  
Android(4292565376) contains.

<b>Android(4292565376)</b> .....	3
<b><i>Conversions</i></b> .....	4
<b><i>Details</i></b> .....	6
<b><i>Harmonies</i></b> .....	11
<b><i>Previews</i></b> .....	23
<b><i>Color Blindness Simulation</i></b> .....	26
<b><i>CSS Examples</i></b> .....	29

# Color

**Android(4292565376)**

# Conversions

## Conversions Part 1

<b>Format</b>	<b>Color</b>
Hex	DB5980
RGB	219, 89, 128
RGB Percent	86%, 35%, 50%
CMY	0.1412, 0.6510, 0.4980
CMYK	0.00, 0.59, 0.42, 0.14
HSL	342°, 64%, 60%
HSV	342°, 59%, 86%
XYZ	36.6821, 23.7633, 23.0755
YIQ	132.3160, 64.9610, 39.6890

# Conversions

## Conversions Part 2

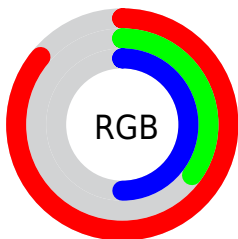
<b>Format</b>	<b>Color</b>
<b>R<sub>YB</sub></b>	219, 89, 128
Decimal	14375296
CIE <sub>Lab</sub>	55.85, 54.34, 4.64
CIE <sub>LCh</sub>	56, 54.533, 4.879
Yxy	23.7633, 0.4392, 0.2845
Android (android.graphics.Color)	4292565376 (0xFFDB5980)
YUV	132.3160, -2.1278, 76.0219
Hunter-Lab	48.7477, 49.0109, 6.0575

# Details

The Android color **4292565376** is a dark color, and the websafe version is hex **FF6699**. The color can be described as middle muted rose. A complement of this color would be **4284079028**, and the grayscale version is **4286874756**.

A 20% lighter version of the original color is **4294938805**, and **4288683599** is the 20% darker color. If you saturate the color by 10%, you get **4292559729**, and if you desaturate by 10%, it is **4292571023**.

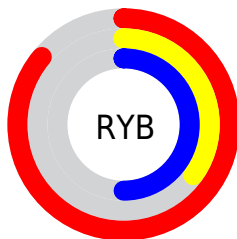
# Distribution



Red (86%)

Green (35%)

Blue (50%)



Red (86%)

Yellow (35%)

Blue (50%)

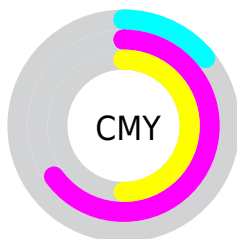


Cyan (0%)

Magenta (59%)

Yellow (42%)

Black (14%)



Cyan (14%)

Magenta (65%)

Yellow (50%)

# Brightness & Saturation Gradients

These gradients show how the Android color 4292565376 changes by changing the brightness by 10 percent. The first figure shows a shift by +10% for each color and the second figure -10%.

Similar to the brightness gradients but the following saturation gradients show a change of the Android color 4292565376 by changing the saturation by 10% instead.





4292565376



4292565376

4294967295



4290592103



4294938805



4288683599



4294946000



4286775352



4294953452



4284874787



4294960895



4283039757



4281270274



4278190080



4292565376



4292565376



4292559729



4292571023

 4292554081

 4292576671

 4292548434

 4292582318

 4292542787

 4292587965

 4292542530

 4292593613

 4292599004

 4292604651

 4292607995

 4292607999

# Harmonies

## Analogous

The Analogous color harmony consists of three colors that are next to each other on the color wheel.



4291125935



4292565376



4292305490

# Triad

The Triadic color harmony groups three colors that are evenly spaced from another and form a triangle on the color wheel.



4292565376



4284912178



4278228443

# Complementary

The Complementary color scheme is a pair of colors which are on the opposite of each other on the color wheel.



4292565376



4284079028

# Split Complementary

Split-complementary colors differ from the complementary color scheme. The scheme consists of three colors, the original color and two neighbors of the complement color.



4278229947



4292565376



4278229596

# Square

The Square scheme is like the rectangle color scheme, but the four colors are evenly spaced on the color wheel.



4292565376



4288120348



4278230412



4280453604

# Rectangle

The Rectangle color scheme consists of four colors that form a rectangle on the color wheel.



4292565376



4291325496



4278230412



4278229203



# Sweetspot

The Sweet Spot groups the original color and five complimentary colors.



4292565376



4294955487



4290009563



4286604140



4278190080



4286611584



# Same Dimension

The Same Dimension uses a secret algorithm to generate beautiful new colors.



4292565376



4294920832



4292571993



4285424486



4289527860



4281204750



# Inverse Universe

The Inverse Universe completely reimagines the original color for something new.



4292565376



4294920832



4284072411



4285424486



4289527860



4281204750



# Previews

## White Background



This preview shows how the Android color 4292565376 looks on a white background.

## Color Contrast Check

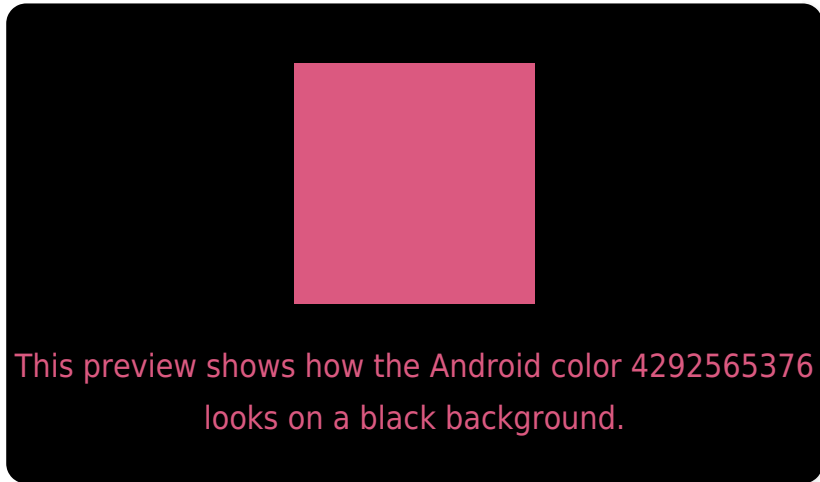
Large Text (above 18pt) WCAG AA ✓ Pass

Any Text WCAG AA ✗ Fail

Large Text (above 18pt) WCAG AAA ✗ Fail

Any Text WCAG AAA ✗ Fail

# Black Background



## Color Contrast Check

Large Text (above 18pt) WCAG AA ✓ Pass

Any Text WCAG AA ✓ Pass

Large Text (above 18pt) WCAG AAA ✓ Pass

Any Text WCAG AAA × Fail

If you want to check with other color combinations, try the [Color Contrast Checker](#).



# Android 4292565376 Background



This preview shows how black text looks on a background with the Android color 4292565376.



This preview shows how white text looks on a background with the Android color 4292565376.

# Color Blindness Simulation

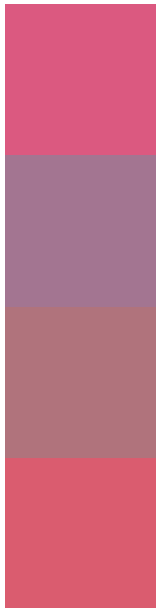
Color vision deficiency is a very complex topic, and I could not describe the different causes any better than Wikipedia does, so if you want to learn more, you should check out their [article about color blindness](#).

## Dichromacy





# Trichromacy



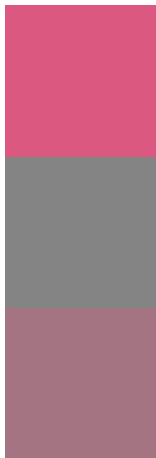
**Original Color**  
4292565376

**Protanomaly**  
4288902545

**Deuteranomaly**  
4289753980

**Tritanomaly**  
4292500591

# Monochromacy



**Original Color**  
4292565376

**Achromatopsia**  
4286874756

**Achromatomaly**  
4288967811

# CSS Examples

## Text

The CSS property to change the color of the text to Android 4292565376 is called "color". The color property can be set on classes, ids or directly on the HTML element.

This example shows how text in the color `rgb(219, 89, 128)` looks like.

```
.text, #text, p{  
    color:rgb(219, 89, 128)  
}
```

If you want to add a text shadow in that color use the text-shadow property, you can generate a text shadow directly with our [CSS Text Shadow Generator](#).

Here you see how black text with a 4 pixel rgb(219, 89, 128) colored shadow looks like.

```
.shadow{ text-shadow: 4px 4px 2px rgb(219, 89, 128) }
```

## Border

The CSS property to change the border of an element to Android 4292565376 is called "border". The border property can be set on classes, ids or directly on the HTML element.

This example shows the color as border, it can be applied via the CSS property "border" or "border-color".

```
.border, #border, table{ border:4px solid rgb(219, 89, 128) }
```

If only the border color should be changed use the property `border-color`.

```
.border{ border-color:rgb(219, 89, 128) }
```

If you want to add a box shadow in that color use:

Here you see how a box with a 4 pixel `rgb(219, 89, 128)` colored shadow looks like.

```
.boxshadow{ -moz-box-shadow:4px 4px 4px  
4px rgb(219, 89, 128); -webkit-box-  
shadow:4px 4px 4px 4px rgb(219, 89, 128);  
box-shadow:4px 4px 4px 4px rgb(219, 89,  
128) }
```

# Background

The CSS property to change the background color of an element to Android 4292565376 is called "background". The background property can be set on classes, ids or directly on the HTML element.

```
.background, #background, body{  
background: rgb(219, 89, 128) }
```

If only the background color should be changed can be used:

```
.background{ background-color: rgb(219, 89,  
128) }
```

This example shows the color as background, it is applied via the CSS property "background".

To optimize and compress your CSS code, you can use our [online CSS compressor and optimizer](#) based on csstidy. If you want to create a linear or radial gradient as background or border, check our [CSS Gradient Generator](#).



Hey! You found this booklet interesting? Support Converting Colors with the new Membership Option!

The pro membership hides all ads, plus gives you double the colors in the color bucket, and more awesome pro features!

**[Learn more, Memberships starting at \\$2.50/m!](#)**

**Follow me  
on Twitter!**

@ConvertingColor