

Converting Colors

Android(4292566136)

Have a look what the booklet for
Android(4292566136) contains.

Android(4292566136)	3
<i>Conversions</i>	4
<i>Details</i>	6
<i>Harmonies</i>	11
<i>Previews</i>	23
<i>Color Blindness Simulation</i>	26
<i>CSS Examples</i>	29

Color

Android(4292566136)

Conversions

Conversions Part 1

Format	Color
Hex	DB5C78
RGB	219, 92, 120
RGB Percent	86%, 36%, 47%
CMY	0.1412, 0.6392, 0.5294
CMYK	0.00, 0.58, 0.45, 0.14
HSL	347°, 64%, 61%
HSV	347°, 58%, 86%
XYZ	36.4307, 24.0704, 20.4952
YIQ	133.1650, 66.7040, 35.6320

Conversions

Conversions Part 2

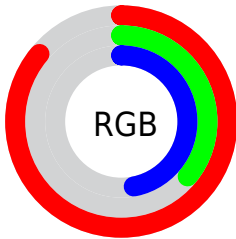
Format	Color
R _Y B	219, 92, 120
Decimal	14376056
CIE Lab	56.16, 52.17, 9.79
CIE LCh	56, 53.084, 10.628
Yxy	24.0704, 0.4498, 0.2972
Android (android.graphics.Color)	4292566136 (0xFFDB5C78)
YUV	133.1650, -6.4903, 75.2773
Hunter-Lab	49.0616, 46.6874, 9.5750

Details

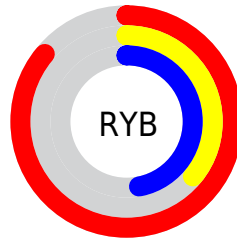
The Android color **4292566136** is a dark color, and the websafe version is hex **CC3366**. The color can be described as middle muted rose. A complement of this color would be **4284275647**, and the grayscale version is **4286940549**.

A 20% lighter version of the original color is **4294939564**, and **4288619336** is the 20% darker color. If you saturate the color by 10%, you get **4292560487**, and if you desaturate by 10%, it is **4292571785**.

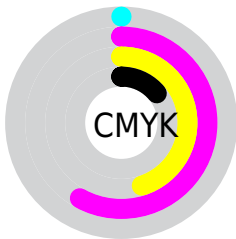
Distribution



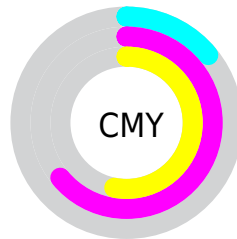
- Red (86%)
- Green (36%)
- Blue (47%)



- Red (86%)
- Yellow (36%)
- Blue (47%)



- Cyan (0%)
- Magenta (58%)
- Yellow (45%)
- Black (14%)



- Cyan (14%)
- Magenta (64%)
- Yellow (53%)

Brightness & Saturation Gradients

These gradients show how the Android color 4292566136 changes by changing the brightness by 10 percent. The first figure shows a shift by +10% for each color and the second figure -10%.

Similar to the brightness gradients but the following saturation gradients show a change of the Android color 4292566136 by changing the saturation by 10% instead.

 4292566136

 4292566136

4294967295

 4290593119

 4294939564

 4288619336

 4294946759

 4286709810

 4294953955

 4284874781

 4294961407

 4283039746

 4281270274

 4278190080

 4292566136

 4292566136

 4292560487

 4292571785

 4292554838

 4292577434

 4292549189

 4292583083

 4292543540

 4292588732

 4292542512

 4292594381

 4292599774

 4292605424

 4292607999

Harmonies

Analogous

The Analogous color harmony consists of three colors that are next to each other on the color wheel.



4291518886



4292566136



4292044621

Triad

The Triadic color harmony groups three colors that are evenly spaced from another and form a triangle on the color wheel.



4292566136



4284323132



4278228189

Complementary

The Complementary color scheme is a pair of colors which are on the opposite of each other on the color wheel.



4292566136



4284275647

Split Complementary

Split-complementary colors differ from the complementary color scheme. The scheme consists of three colors, the original color and two neighbors of the complement color.



4278229954



4292566136



4278229862

Square

The Square scheme is like the rectangle color scheme, but the four colors are evenly spaced on the color wheel.



4292566136



4287662627



4278230422



4283139810

Rectangle

The Rectangle color scheme consists of four colors that form a rectangle on the color wheel.



4292566136



4290933557



4278230422



4278228950

Sweetspot

The Sweet Spot groups the original color and five complimentary colors.



4292566136



4294956253



4290600155



4286604908



4278190080



4286611584

Same Dimension

The Same Dimension uses a secret algorithm to generate beautiful new colors.



4292566136



4294921588



4292574812



4285424485



4289527846



4281204746

Inverse Universe

The Inverse Universe completely reimagines the original color for something new.



4292566136



4294921588



4284266971



4285424485



4289527846



4281204746

Previews

White Background



This preview shows how the Android color 4292566136 looks on a white background.

Color Contrast Check

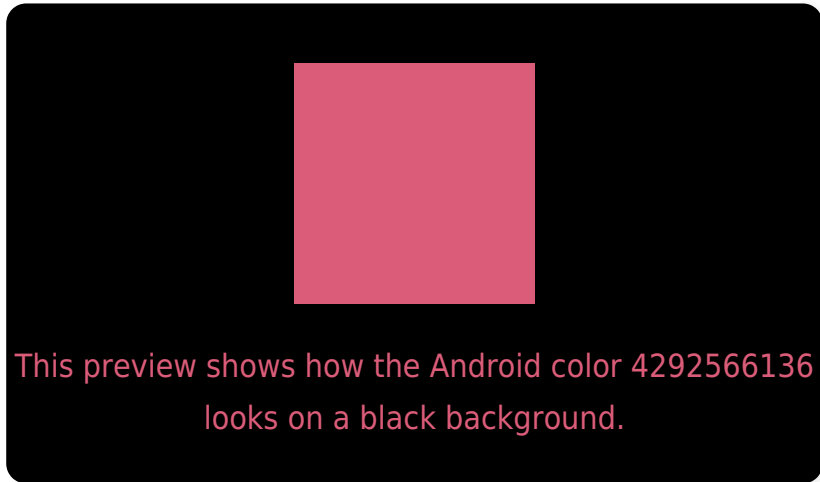
Large Text (above 18pt) WCAG AA ✓ Pass

Any Text WCAG AA ✗ Fail

Large Text (above 18pt) WCAG AAA ✗ Fail

Any Text WCAG AAA ✗ Fail

Black Background



Color Contrast Check

Large Text (above 18pt) WCAG AA ✓ Pass

Any Text WCAG AA ✓ Pass

Large Text (above 18pt) WCAG AAA ✓ Pass

Any Text WCAG AAA × Fail

If you want to check with other color combinations, try the [Color Contrast Checker](#).

Android 4292566136 Background



This preview shows how black text looks on a background with the Android color 4292566136.



This preview shows how white text looks on a background with the Android color 4292566136.

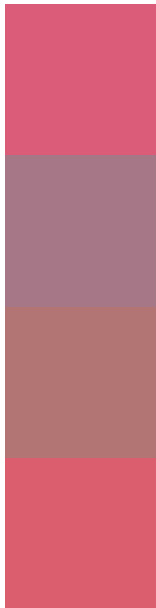
Color Blindness Simulation

Color vision deficiency is a very complex topic, and I could not describe the different causes any better than Wikipedia does, so if you want to learn more, you should check out their [article about color blindness](#).

Dichromacy



Trichromacy



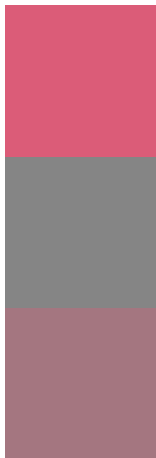
Original Color
4292566136

Protanomaly
4289099655

Deuteranomaly
4289950836

Tritanomaly
4292501101

Monochromacy



Original Color
4292566136

Achromatopsia
4286940549

Achromatomaly
4288968320

CSS Examples

Text

The CSS property to change the color of the text to Android 4292566136 is called "color". The color property can be set on classes, ids or directly on the HTML element.

This example shows how text in the color `rgb(219, 92, 120)` looks like.

```
.text, #text, p{  
    color:rgb(219, 92, 120)  
}
```

If you want to add a text shadow in that color use the text-shadow property, you can generate a text shadow directly with our [CSS Text Shadow Generator](#).

Here you see how black text with a 4 pixel rgb(219, 92, 120) colored shadow looks like.

```
.shadow{ text-shadow: 4px 4px 2px rgb(219, 92, 120) }
```

Border

The CSS property to change the border of an element to Android 4292566136 is called "border". The border property can be set on classes, ids or directly on the HTML element.

This example shows the color as border, it can be applied via the CSS property "border" or "border-color".

```
.border, #border, table{ border:4px solid rgb(219, 92, 120) }
```

If only the border color should be changed use the property border-color.

```
.border{ border-color:rgb(219, 92, 120) }
```

If you want to add a box shadow in that color use:

Here you see how a box with a 4 pixel rgb(219, 92, 120) colored shadow looks like.

```
.boxshadow{ -moz-box-shadow:4px 4px 4px  
4px rgb(219, 92, 120); -webkit-box-  
shadow:4px 4px 4px 4px rgb(219, 92, 120);  
box-shadow:4px 4px 4px 4px rgb(219, 92,  
120) }
```

Background

The CSS property to change the background color of an element to Android 4292566136 is called "background". The background property can be set on classes, ids or directly on the HTML element.

```
.background, #background, body{  
background: rgb(219, 92, 120) }
```

If only the background color should be changed can be used:

```
.background{ background-color: rgb(219, 92,  
120) }
```

This example shows the color as background, it is applied via the CSS property "background".

To optimize and compress your CSS code, you can use our [online CSS compressor and optimizer](#) based on csstidy. If you want to create a linear or radial gradient as background or border, check our [CSS Gradient Generator](#).

Hey! You found this booklet interesting? Support Converting Colors with the new Membership Option!

The pro membership hides all ads, plus gives you double the colors in the color bucket, and more awesome pro features!

[Learn more, Memberships starting at \\$2.50/m!](#)

**Follow me
on Twitter!**

@ConvertingColor