

Converting Colors

Android(4292577434)

Have a look what the booklet for
Android(4292577434) contains.

Android(4292577434)	3
<i>Conversions</i>	4
<i>Details</i>	6
<i>Harmonies</i>	11
<i>Previews</i>	23
<i>Color Blindness Simulation</i>	26
<i>CSS Examples</i>	29

Color

Android(4292577434)

Conversions

Conversions Part 1

Format	Color
Hex	DB889A
RGB	219, 136, 154
RGB Percent	86%, 53%, 60%
CMY	0.1412, 0.4667, 0.3961
CMYK	0.00, 0.38, 0.30, 0.14
HSL	347°, 54%, 70%
HSV	347°, 38%, 86%
XYZ	43.8503, 35.0015, 35.0166
YIQ	162.8690, 43.6900, 23.1940

Conversions

Conversions Part 2

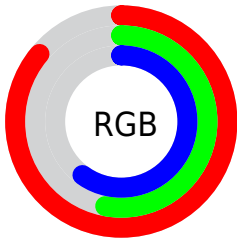
Format	Color
R _Y B	219, 136, 154
Decimal	14387354
CIE Lab	65.75, 33.98, 3.92
CIE LCh	66, 34.206, 6.585
Yxy	35.0015, 0.3851, 0.3074
Android (android.graphics.Color)	4292577434 (0xFFDB889A)
YUV	162.8690, -4.3724, 49.2269
Hunter-Lab	59.1621, 28.7688, 6.3211

Details

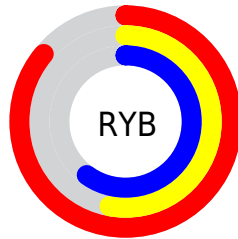
The Android color `4292577434` is a light color, and the websafe version is hex `FF9999`. A complement of this color would be `4287159241`, and the grayscale version is `4288914339`.

A 20% lighter version of the original color is `4294950608`, and `4288828775` is the 20% darker color. If you saturate the color by 10%, you get `4292571785`, and if you desaturate by 10%, it is `4292583083`.

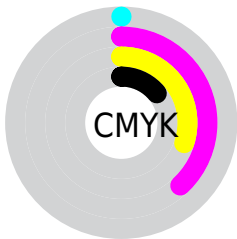
Distribution



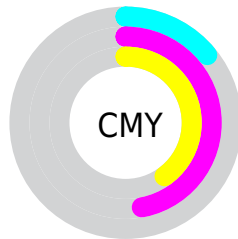
- Red (86%)
- Green (53%)
- Blue (60%)



- Red (86%)
- Yellow (53%)
- Blue (60%)



- Cyan (0%)
- Magenta (38%)
- Yellow (30%)
- Black (14%)



- Cyan (14%)
- Magenta (47%)
- Yellow (40%)

Brightness & Saturation Gradients

These gradients show how the Android color 4292577434 changes by changing the brightness by 10 percent. The first figure shows a shift by +10% for each color and the second figure -10%.

Similar to the brightness gradients but the following saturation gradients show a change of the Android color 4292577434 by changing the saturation by 10% instead.

 4292577434

 4292577434

4294967295

 4290670208

 4294950608

 4288828775


 4294958061

 4286987343

 4294965247

 4285211448

 4283500579

 4281860109

 4280090625

 4278190080

 4292577434

 4292577434

 4292571785

 4292583083

 4292566136

 4292588732

 4292560487

 4292594381

 4292554837

 4292600031

 4292549188

 4292605424

 4292543795

 4292607999

 4292542511

Harmonies

Analogous

The Analogous color harmony consists of three colors that are next to each other on the color wheel.



4291595449



4292577434



4292447357

Triad

The Triadic color harmony groups three colors that are evenly spaced from another and form a triangle on the color wheel.



4292577434



4287474029



4283214295

Complementary

The Complementary color scheme is a pair of colors which are on the opposite of each other on the color wheel.



4292577434



4287159241

Split Complementary

Split-complementary colors differ from the complementary color scheme. The scheme consists of three colors, the original color and two neighbors of the complement color.



4280922051



4292577434



4284984966

Square

The Square scheme is like the rectangle color scheme, but the four colors are evenly spaced on the color wheel.



4292577434



4289634402



4282429606



4286554332

Rectangle

The Rectangle color scheme consists of four colors that form a rectangle on the color wheel.



4292577434



4291793518



4282429606



4282166482

Sweetspot

The Sweet Spot groups the original color and five complimentary colors.



4292577434



4294960105



4291332315



4286607219



4278190080



4286611584

Same Dimension

The Same Dimension uses a secret algorithm to generate beautiful new colors.



4292577434



4294937765



4292583048



4285424485



4289527846



4281204746

Inverse Universe

The Inverse Universe completely reimagines the original color for something new.



4292577434



4294937765



4287153627



4285424485



4289527846



4281204746

Previews

White Background



This preview shows how the Android color 4292577434 looks on a white background.

Color Contrast Check

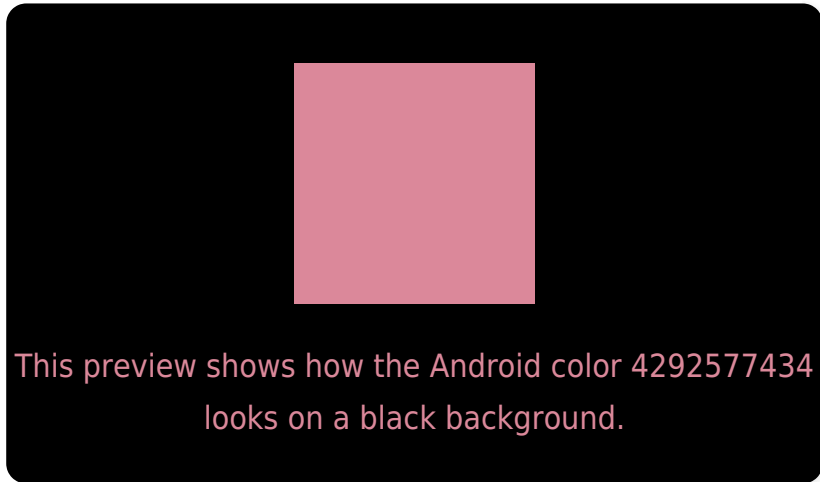
Large Text (above 18pt) WCAG AA × Fail

Any Text WCAG AA × Fail

Large Text (above 18pt) WCAG AAA × Fail

Any Text WCAG AAA × Fail

Black Background



Color Contrast Check

Large Text (above 18pt) WCAG AA ✓ Pass

Any Text WCAG AA ✓ Pass

Large Text (above 18pt) WCAG AAA ✓ Pass

Any Text WCAG AAA ✓ Pass

If you want to check with other color combinations, try the [Color Contrast Checker](#).

Android 4292577434 Background



This preview shows how black text looks on a background with the Android color 4292577434.



This preview shows how white text looks on a background with the Android color 4292577434.

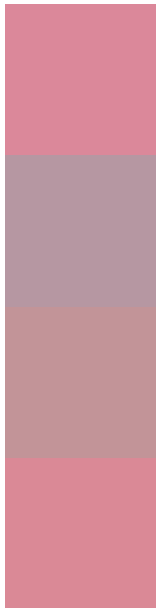
Color Blindness Simulation

Color vision deficiency is a very complex topic, and I could not describe the different causes any better than Wikipedia does, so if you want to learn more, you should check out their [article about color blindness](#).

Dichromacy



Trichromacy



Original Color
4292577434

Protanomaly
4290156450

Deuteranomaly
4290942104

Tritanomaly
4292512150

Monochromacy



Original Color
4292577434

Achromatopsia
4288914339

Achromatomaly
4290222496

CSS Examples

Text

The CSS property to change the color of the text to Android 4292577434 is called "color". The color property can be set on classes, ids or directly on the HTML element.

This example shows how text in the color `rgb(219, 136, 154)` looks like.

```
.text, #text, p{  
    color:rgb(219, 136, 154)  
}
```

If you want to add a text shadow in that color use the text-shadow property, you can generate a text shadow directly with our [CSS Text Shadow Generator](#).

Here you see how black text with a 4 pixel rgb(219, 136, 154) colored shadow looks like.

```
.shadow{ text-shadow: 4px 4px 2px rgb(219, 136, 154) }
```

Border

The CSS property to change the border of an element to Android 4292577434 is called "border". The border property can be set on classes, ids or directly on the HTML element.

This example shows the color as border, it can be applied via the CSS property "border" or "border-color".

```
.border, #border, table{ border:4px solid rgb(219, 136, 154) }
```

If only the border color should be changed use the property `border-color`.

```
.border{ border-color:rgb(219, 136, 154) }
```

If you want to add a box shadow in that color use:

Here you see how a box with a 4 pixel `rgb(219, 136, 154)` colored shadow looks like.

```
.boxshadow{ -moz-box-shadow:4px 4px 4px  
4px rgb(219, 136, 154); -webkit-box-  
shadow:4px 4px 4px 4px rgb(219, 136, 154);  
box-shadow:4px 4px 4px 4px rgb(219, 136,  
154) }
```

Background

The CSS property to change the background color of an element to Android 4292577434 is called "background". The background property can be set on classes, ids or directly on the HTML element.

```
.background, #background, body{  
background: rgb(219, 136, 154) }
```

If only the background color should be changed can be used:

```
.background{ background-color: rgb(219,  
136, 154) }
```

This example shows the color as background, it is applied via the CSS property "background".

To optimize and compress your CSS code, you can use our [online CSS compressor and optimizer](#) based on csstidy. If you want to create a linear or radial gradient as background or border, check our [CSS Gradient Generator](#).

Hey! You found this booklet interesting? Support Converting Colors with the new Membership Option!

The pro membership hides all ads, plus gives you double the colors in the color bucket, and more awesome pro features!

[Learn more, Memberships starting at \\$2.50/m!](#)

**Follow me
on Twitter!**

@ConvertingColor