

Converting Colors

Android(4292581296)

Have a look what the booklet for
Android(4292581296) contains.

Android(4292581296)	3
<i>Conversions</i>	4
<i>Details</i>	6
<i>Harmonies</i>	11
<i>Previews</i>	23
<i>Color Blindness Simulation</i>	26
<i>CSS Examples</i>	29

Color

Android(4292581296)

Conversions

Conversions Part 1

Format	Color
Hex	DB97B0
RGB	219, 151, 176
RGB Percent	86%, 59%, 69%
CMY	0.1412, 0.4078, 0.3098
CMYK	0.00, 0.31, 0.20, 0.14
HSL	338°, 49%, 73%
HSV	338°, 31%, 86%
XYZ	48.1165, 40.3279, 46.3223
YIQ	174.1820, 32.5030, 22.1910

Conversions

Conversions Part 2

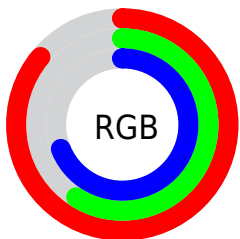
Format	Color
R _Y B	219, 151, 176
Decimal	14391216
CIE Lab	69.70, 29.09, -2.66
CIE LCh	70, 29.208, 354.780
Yxy	40.3279, 0.3570, 0.2992
Android (android.graphics.Color)	4292581296 (0xFFDB97B0)
YUV	174.1820, 0.8963, 39.3054
Hunter-Lab	63.5042, 24.1152, 1.2046

Details

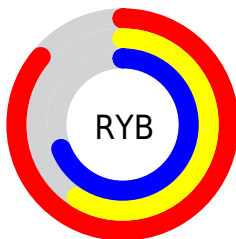
The Android color `4292581296` is a light color, and the websafe version is hex `CC9999`. A complement of this color would be `4288142274`, and the grayscale version is `4289638062`.

A 20% lighter version of the original color is `4294954728`, and `4288897916` is the 20% darker color. If you saturate the color by 10%, you get `4292575650`, and if you desaturate by 10%, it is `4292586942`.

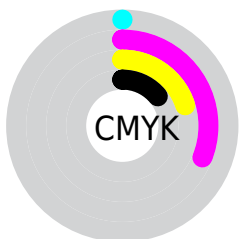
Distribution



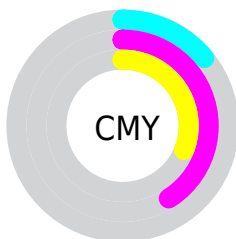
- Red (86%)
- Green (59%)
- Blue (69%)



- Red (86%)
- Yellow (59%)
- Blue (69%)



- Cyan (0%)
- Magenta (31%)
- Yellow (20%)
- Black (14%)



- Cyan (14%)
- Magenta (41%)
- Yellow (31%)

Brightness & Saturation Gradients

These gradients show how the Android color 4292581296 changes by changing the brightness by 10 percent. The first figure shows a shift by +10% for each color and the second figure -10%.

Similar to the brightness gradients but the following saturation gradients show a change of the Android color 4292581296 by changing the saturation by 10% instead.

 4292581296

 4292581296

4294967295

 4290739605

 4294954728

 4288897916

 4294961919

 4287122275

 4285346635

 4283702068

 4282057503

 4280811526

 4278190080

 4292581296

 4292581296

 4292575650

 4292586942

 4292570004

 4292592588

 4292564358

 4292598234

 4292558713

 4292603879

 4292553323

 4292607989

 4292547677

 4292607999

 4292542545

Harmonies

Analogous

The Analogous color harmony consists of three colors that are next to each other on the color wheel.



4291337417



4292581296



4292843669

Triad

The Triadic color harmony groups three colors that are evenly spaced from another and form a triangle on the color wheel.



4292581296



4289113978



4284528085

Complementary

The Complementary color scheme is a pair of colors which are on the opposite of each other on the color wheel.



4292581296



4288142274

Split Complementary

Split-complementary colors differ from the complementary color scheme. The scheme consists of three colors, the original color and two neighbors of the complement color.



4283939264



4292581296



4287149707

Square

The Square scheme is like the rectangle color scheme, but the four colors are evenly spaced on the color wheel.



4292581296



4290881398



4285184421



4286688991

Rectangle

The Rectangle color scheme consists of four colors that form a rectangle on the color wheel.



4292581296



4292516998



4285184421



4284069839

Sweetspot

The Sweet Spot groups the original color and five complimentary colors.



4292581296



4294961392



4290877403



4286607735



4278190080



4286611584

Same Dimension

The Same Dimension uses a secret algorithm to generate beautiful new colors.



4292581296



4294943171



4292583319



4285424487



4289527872



4281204753

Inverse Universe

The Inverse Universe completely reimagines the original color for something new.



4292581296



4294943171



4288140251



4285424487



4289527872



4281204753

Previews

White Background



This preview shows how the Android color 4292581296 looks on a white background.

Color Contrast Check

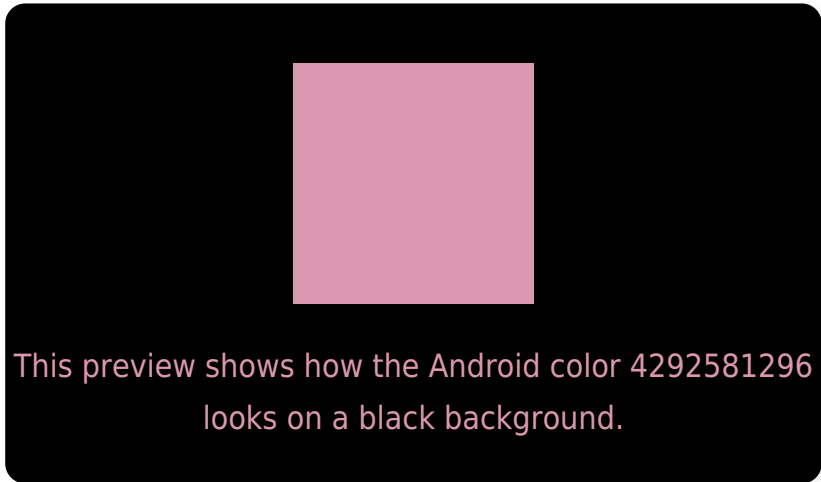
Large Text (above 18pt) WCAG AA × Fail

Any Text WCAG AA × Fail

Large Text (above 18pt) WCAG AAA × Fail

Any Text WCAG AAA × Fail

Black Background



Color Contrast Check

Large Text (above 18pt) WCAG AA ✓ Pass

Any Text WCAG AA ✓ Pass

Large Text (above 18pt) WCAG AAA ✓ Pass

Any Text WCAG AAA ✓ Pass

If you want to check with other color combinations, try the [Color Contrast Checker](#).

Android 4292581296 Background



This preview shows how black text looks on a background with the Android color 4292581296.




This preview shows how white text looks on a background with the Android color 4292581296.

Color Blindness Simulation

Color vision deficiency is a very complex topic, and I could not describe the different causes any better than Wikipedia does, so if you want to learn more, you should check out their [article about color blindness](#).

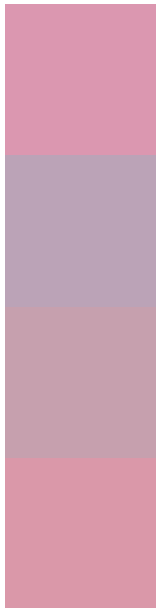
Dichromacy





Tritanopia
4292516261

Trichromacy



Original Color
4292581296

Protanomaly
4290487223

Deuteranomaly
4291207342

Tritanomaly
4292516009

Monochromacy



Original Color
4292581296

Achromatopsia
4289638062

Achromatomaly
4290684591

CSS Examples

Text

The CSS property to change the color of the text to Android 4292581296 is called "color". The color property can be set on classes, ids or directly on the HTML element.

This example shows how text in the color `rgb(219, 151, 176)` looks like.

```
.text, #text, p{  
    color:rgb(219, 151, 176)  
}
```

If you want to add a text shadow in that color use the text-shadow property, you can generate a text shadow directly with our [CSS Text Shadow Generator](#).

Here you see how black text with a 4 pixel rgb(219, 151, 176) colored shadow looks like.

```
.shadow{ text-shadow: 4px 4px 2px rgb(219, 151, 176) }
```

Border

The CSS property to change the border of an element to Android 4292581296 is called "border". The border property can be set on classes, ids or directly on the HTML element.

This example shows the color as border, it can be applied via the CSS property "border" or "border-color".

```
.border, #border, table{ border:4px solid rgb(219, 151, 176) }
```

If only the border color should be changed use the property `border-color`.

```
.border{ border-color:rgb(219, 151, 176) }
```

If you want to add a box shadow in that color use:

Here you see how a box with a 4 pixel `rgb(219, 151, 176)` colored shadow looks like.

```
.boxshadow{ -moz-box-shadow:4px 4px 4px 4px rgb(219, 151, 176); -webkit-box-shadow:4px 4px 4px 4px rgb(219, 151, 176); box-shadow:4px 4px 4px 4px rgb(219, 151, 176) }
```

Background

The CSS property to change the background color of an element to Android 4292581296 is called "background". The background property can be set on classes, ids or directly on the HTML element.

```
.background, #background, body{  
background: rgb(219, 151, 176) }
```

If only the background color should be changed can be used:

```
.background{ background-color: rgb(219,  
151, 176) }
```

This example shows the color as background, it is applied via the CSS property "background".

To optimize and compress your CSS code, you can use our [online CSS compressor and optimizer](#) based on csstidy. If you want to create a linear or radial gradient as background or border, check our [CSS Gradient Generator](#).

Hey! You found this booklet interesting? Support Converting Colors with the new Membership Option!

The pro membership hides all ads, plus gives you double the colors in the color bucket, and more awesome pro features!

[Learn more, Memberships starting at \\$2.50/m!](#)

**Follow me
on Twitter!**

@ConvertingColor