

Converting Colors

Android(4292587426)

Have a look what the booklet for
Android(4292587426) contains.

Android(4292587426)	3
<i>Conversions</i>	4
<i>Details</i>	6
<i>Harmonies</i>	11
<i>Previews</i>	23
<i>Color Blindness Simulation</i>	26
<i>CSS Examples</i>	29

Color

Android(4292587426)

Conversions

Conversions Part 1

Format	Color
Hex	DBAFA2
RGB	219, 175, 162
RGB Percent	86%, 69%, 64%
CMY	0.1412, 0.3137, 0.3647
CMYK	0.00, 0.20, 0.26, 0.14
HSL	14°, 44%, 75%
HSV	14°, 26%, 86%
XYZ	51.0650, 48.3286, 40.8194
YIQ	186.6740, 30.3970, 5.2850

Conversions

Conversions Part 2

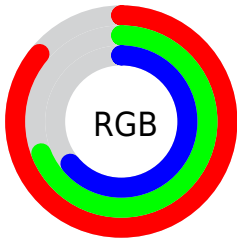
Format	Color
R _Y B	219, 179, 162
Decimal	14397346
CIE Lab	75.03, 14.09, 12.74
CIE LCh	75, 18.999, 42.110
Yxy	48.3286, 0.3642, 0.3447
Android (android.graphics.Color)	4292587426 (0xFFDBAFA2)
YUV	186.6740, -12.1643, 28.3499
Hunter-Lab	69.5188, 9.4591, 13.8499

Details

The Android color `4292587426` is a light color, and the websafe version is hex `CC9999`. A complement of this color would be `4288859867`, and the grayscale version is `4290493371`.

A 20% lighter version of the original color is `4294961113`, and `4288903790` is the 20% darker color. If you saturate the color by 10%, you get `4292583052`, and if you desaturate by 10%, it is `4292591800`.

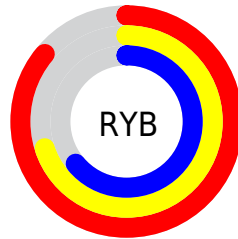
Distribution



Red (86%)

Green (69%)

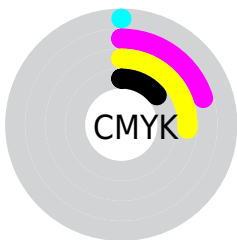
Blue (64%)



Red (86%)

Yellow (70%)

Blue (64%)

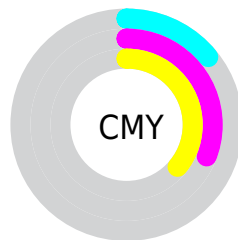


Cyan (0%)

Magenta (20%)

Yellow (26%)

Black (14%)



Cyan (14%)

Magenta (31%)

Yellow (36%)

Brightness & Saturation Gradients

These gradients show how the Android color 4292587426 changes by changing the brightness by 10 percent. The first figure shows a shift by +10% for each color and the second figure -10%.

Similar to the brightness gradients but the following saturation gradients show a change of the Android color 4292587426 by changing the saturation by 10% instead.

 4292587426

 4292587426

4294967295

 4290745480

 4294961113

 4288903790

 4294967285

 4287127894

 4285418047

 4283773737

 4282129684

 4280682240

 4278190080

 4292587426

 4292587426

 4292583052

 4292591800

 4292578678

 4292596174

 4292574304

 4292600548

 4292569930

 4292604922

 4292565556

 4292607999

 4292561439

 4292557065

 4292555264

Harmonies

Analogous

The Analogous color harmony consists of three colors that are next to each other on the color wheel.



4292718002



4292587426



4291867800

Triad

The Triadic color harmony groups three colors that are evenly spaced from another and form a triangle on the color wheel.



4292587426



4288201389



4289640667

Complementary

The Complementary color scheme is a pair of colors which are on the opposite of each other on the color wheel.



4292587426



4288859867

Split Complementary

Split-complementary colors differ from the complementary color scheme. The scheme consists of three colors, the original color and two neighbors of the complement color.



4288265689



4292587426



4287415231

Square

The Square scheme is like the rectangle color scheme, but the four colors are evenly spaced on the color wheel.



4292587426



4289445790



4287349199



4291146451

Rectangle

The Rectangle color scheme consists of four colors that form a rectangle on the color wheel.



4292587426



4291147926



4287349199



4289182427

Sweetspot

The Sweet Spot groups the original color and five complimentary colors.



4292587426



4294963179



4292584143



4286609011



4278190080



4286611584

Same Dimension

The Same Dimension uses a secret algorithm to generate beautiful new colors.



4292587426



4294951600



4292594594



4285424995



4289538048



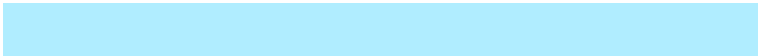
4281207296

Inverse Universe

The Inverse Universe completely reimagines the original color for something new.



4288859867



4289785343



4288852699



4284705646



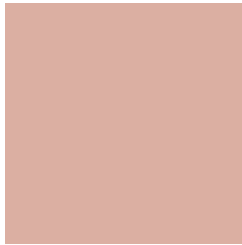
4278224557



4278199086

Previews

White Background



This preview shows how the Android color 4292587426 looks on a white background.

Color Contrast Check

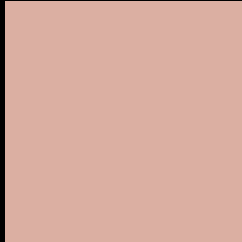
Large Text (above 18pt) WCAG AA × Fail

Any Text WCAG AA × Fail

Large Text (above 18pt) WCAG AAA × Fail

Any Text WCAG AAA × Fail

Black Background



This preview shows how the Android color 4292587426 looks on a black background.

Color Contrast Check

Large Text (above 18pt) WCAG AA ✓ Pass

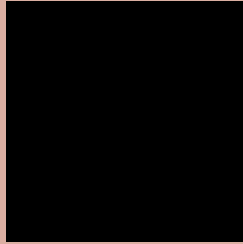
Any Text WCAG AA ✓ Pass

Large Text (above 18pt) WCAG AAA ✓ Pass

Any Text WCAG AAA ✓ Pass

If you want to check with other color combinations, try the [Color Contrast Checker](#).

Android 4292587426 Background



This preview shows how black text looks on a background with the Android color 4292587426.



This preview shows how white text looks on a background with the Android color 4292587426.

Color Blindness Simulation

Color vision deficiency is a very complex topic, and I could not describe the different causes any better than Wikipedia does, so if you want to learn more, you should check out their [article about color blindness](#).


Dichromacy



Original Color
4292587426

Protanopia
4290885799

Deuteranopia
4292063905



Tritanopia
4292783289

Trichromacy



Original Color
4292587426

Protanomaly
4291474853

Deuteranomaly
4292260257

Tritanomaly
4292718001

Monochromacy



Original Color
4292587426

Achromatopsia
4290493371

Achromatomaly
4291278770

CSS Examples

Text

The CSS property to change the color of the text to Android 4292587426 is called "color". The color property can be set on classes, ids or directly on the HTML element.

This example shows how text in the color `rgb(219, 175, 162)` looks like.

```
.text, #text, p{  
    color:rgb(219, 175, 162)  
}
```

If you want to add a text shadow in that color use the text-shadow property, you can generate a text shadow directly with our [CSS Text Shadow Generator](#).

Here you see how black text with a 4 pixel rgb(219, 175, 162) colored shadow looks like.

```
.shadow{ text-shadow: 4px 4px 2px rgb(219, 175, 162) }
```

Border

The CSS property to change the border of an element to Android 4292587426 is called "border". The border property can be set on classes, ids or directly on the HTML element.

This example shows the color as border, it can be applied via the CSS property "border" or "border-color".

```
.border, #border, table{ border:4px solid rgb(219, 175, 162) }
```

If only the border color should be changed use the property `border-color`.

```
.border{ border-color:rgb(219, 175, 162) }
```

If you want to add a box shadow in that color use:

Here you see how a box with a 4 pixel `rgb(219, 175, 162)` colored shadow looks like.

```
.boxshadow{ -moz-box-shadow:4px 4px 4px  
4px rgb(219, 175, 162); -webkit-box-  
shadow:4px 4px 4px 4px rgb(219, 175, 162);  
box-shadow:4px 4px 4px 4px rgb(219, 175,  
162) }
```

Background

The CSS property to change the background color of an element to Android 4292587426 is called "background". The background property can be set on classes, ids or directly on the HTML element.

```
.background, #background, body{  
background: rgb(219, 175, 162) }
```

If only the background color should be changed can be used:

```
.background{ background-color: rgb(219,  
175, 162) }
```

This example shows the color as background, it is applied via the CSS property "background".

To optimize and compress your CSS code, you can use our [online CSS compressor and optimizer](#) based on csstidy. If you want to create a linear or radial gradient as background or border, check our [CSS Gradient Generator](#).

Hey! You found this booklet interesting? Support Converting Colors with the new Membership Option!

The pro membership hides all ads, plus gives you double the colors in the color bucket, and more awesome pro features!

[Learn more, Memberships starting at \\$2.50/m!](#)

**Follow me
on Twitter!**

@ConvertingColor