

# Converting Colors

Android(4292589746)

Have a look what the booklet for  
Android(4292589746) contains.

<b>Android(4292589746)</b> .....	3
<b><i>Conversions</i></b> .....	4
<b><i>Details</i></b> .....	6
<b><i>Harmonies</i></b> .....	11
<b><i>Previews</i></b> .....	23
<b><i>Color Blindness Simulation</i></b> .....	26
<b><i>CSS Examples</i></b> .....	29

# **Color**

**Android(4292589746)**

# Conversions

## Conversions Part 1

Format	Color
Hex	DBB8B2
RGB	219, 184, 178
RGB Percent	86%, 72%, 70%
CMY	0.1412, 0.2784, 0.3020
CMYK	0.00, 0.16, 0.19, 0.14
HSL	9°, 36%, 78%
HSV	9°, 19%, 86%
XYZ	54.3898, 52.5554, 49.3970
YIQ	193.7810, 22.7860, 5.5540

# Conversions

## Conversions Part 2

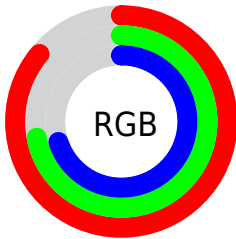
<b>Format</b>	<b>Color</b>
<b>R<sub>YB</sub></b>	219, 185, 178
Decimal	14399666
CIE <sub>Lab</sub>	77.61, 11.61, 7.72
CIE <sub>LCh</sub>	78, 13.944, 33.627
Yxy	52.5554, 0.3479, 0.3362
Android (android.graphics.Color)	4292589746 (0xFFDDBB8B2)
YUV	193.7810, -7.7800, 22.1171
Hunter-Lab	72.4951, 7.0540, 10.3473

# Details

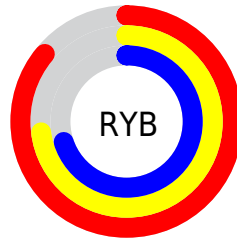
The Android color `4292589746` is a light color, and the websafe version is hex `FFCCCC`. A complement of this color would be `4289910235`, and the grayscale version is `4290953922`.

A 20% lighter version of the original color is `4294963434`, and `4288971645` is the 20% darker color. If you saturate the color by 10%, you get `4292584860`, and if you desaturate by 10%, it is `4292594632`.

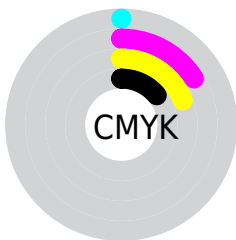
# Distribution



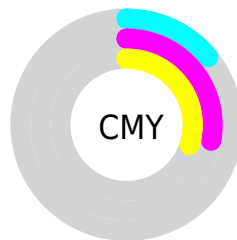
- Red (86%)
- Green (72%)
- Blue (70%)



- Red (86%)
- Yellow (73%)
- Blue (70%)



- Cyan (0%)
- Magenta (16%)
- Yellow (19%)
- Black (14%)



- Cyan (14%)
- Magenta (28%)
- Yellow (30%)

# Brightness & Saturation Gradients

These gradients show how the Android color 4292589746 changes by changing the brightness by 10 percent. The first figure shows a shift by +10% for each color and the second figure -10%.

Similar to the brightness gradients but the following saturation gradients show a change of the Android color 4292589746 by changing the saturation by 10% instead.



 4292589746

 4292589746

4294967295

 4290747799

 4294963434

 4288971645

 4287195748

 4285485389

 4283841078

 4282262817

 4280815626

 4278386688

 4278190080

 4292589746

 4292589746

 4292584860

 4292594632

 4292580230

 4292599262

 4292575344

 4292604148

 4292570458

 4292607999

 4292565828

 4292560943

 4292556057

 4292551171

 4292550656

# Harmonies

## Analogous

The Analogous color harmony consists of three colors that are next to each other on the color wheel.



4292523967



4292589746



4292197289

# Triad

The Triadic color harmony groups three colors that are evenly spaced from another and form a triangle on the color wheel.



4292589746



4289513140



4290035929

# Complementary

The Complementary color scheme is a pair of colors which are on the opposite of each other on the color wheel.



4292589746



4289910235

# Split Complementary

Split-complementary colors differ from the complementary color scheme. The scheme consists of three colors, the original color and two neighbors of the complement color.



4289119446



4292589746



4288858305

# Square

The Square scheme is like the rectangle color scheme, but the four colors are evenly spaced on the color wheel.



4292589746



4290429866



4288661454



4291083477

# Rectangle

The Rectangle color scheme consists of four colors that form a rectangle on the color wheel.



4292589746



4291673766



4288661454



4289708761

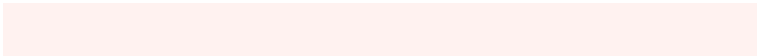


# Sweetspot

The Sweet Spot groups the original color and five complimentary colors.



4292589746



4294963952



4292588246



4286609527



4278190080



4286611584



# Same Dimension

The Same Dimension uses a secret algorithm to generate beautiful new colors.



4292589746



4294954951



4292594866



4285424739



4289534208



4281206528

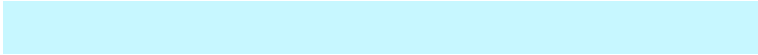


# Inverse Universe

The Inverse Universe completely reimagines the original color for something new.



4289910235



4291295231



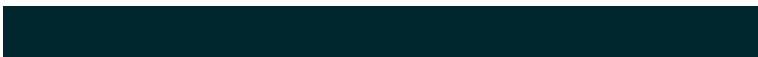
4289905115



4284705902



4278228141



4278200110



# Previews

## White Background



This preview shows how the Android color 4292589746 looks on a white background.

## Color Contrast Check

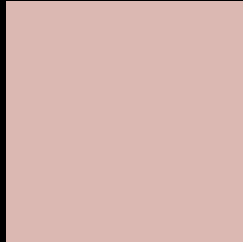
Large Text (above 18pt) WCAG AA × Fail

Any Text WCAG AA × Fail

Large Text (above 18pt) WCAG AAA × Fail

Any Text WCAG AAA × Fail

# Black Background



This preview shows how the Android color 4292589746 looks on a black background.

## Color Contrast Check

Large Text (above 18pt) WCAG AA ✓ Pass

Any Text WCAG AA ✓ Pass

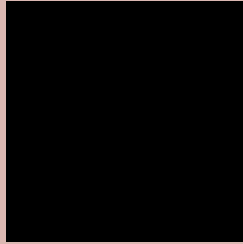
Large Text (above 18pt) WCAG AAA ✓ Pass

Any Text WCAG AAA ✓ Pass

If you want to check with other color combinations, try the [Color Contrast Checker](#).



# Android 4292589746 Background



This preview shows how black text looks on a background with the Android color 4292589746.



This preview shows how white text looks on a background with the Android color 4292589746.

# Color Blindness Simulation

Color vision deficiency is a very complex topic, and I could not describe the different causes any better than Wikipedia does, so if you want to learn more, you should check out their [article about color blindness](#).

## Dichromacy



**Original Color**  
4292589746

**Protanopia**  
4291215286

**Deuteranopia**  
4292393394



# Trichromacy



**Original Color**  
4292589746

**Protanomaly**  
4291738805

**Deuteranomaly**  
4292458930

**Tritanomaly**  
4292654781

# Monochromacy



**Original Color**  
4292589746

**Achromatopsia**  
4290953922

**Achromatomaly**  
4291542716

# CSS Examples

## Text

The CSS property to change the color of the text to Android 4292589746 is called "color". The color property can be set on classes, ids or directly on the HTML element.

This example shows how text in the color `rgb(219, 184, 178)` looks like.

```
.text, #text, p{  
    color:rgb(219, 184, 178)  
}
```

If you want to add a text shadow in that color use the text-shadow property, you can generate a text shadow directly with our [CSS Text Shadow Generator](#).

Here you see how black text with a 4 pixel rgb(219, 184, 178) colored shadow looks like.

```
.shadow{ text-shadow: 4px 4px 2px rgb(219, 184, 178) }
```

## Border

The CSS property to change the border of an element to Android 4292589746 is called "border". The border property can be set on classes, ids or directly on the HTML element.

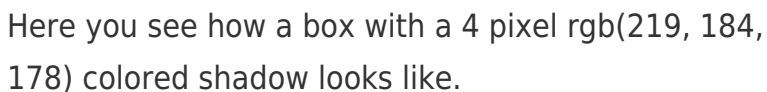
This example shows the color as border, it can be applied via the CSS property "border" or "border-color".

```
.border, #border, table{ border:4px solid rgb(219, 184, 178) }
```

If only the border color should be changed use the property `border-color`.

```
.border{ border-color:rgb(219, 184, 178) }
```

If you want to add a box shadow in that color use:



Here you see how a box with a 4 pixel `rgb(219, 184, 178)` colored shadow looks like.

```
.boxshadow{ -moz-box-shadow:4px 4px 4px 4px rgb(219, 184, 178); -webkit-box-shadow:4px 4px 4px 4px rgb(219, 184, 178); box-shadow:4px 4px 4px 4px rgb(219, 184, 178) }
```

# Background

The CSS property to change the background color of an element to Android 4292589746 is called "background". The background property can be set on classes, ids or directly on the HTML element.

```
.background, #background, body{  
background: rgb(219, 184, 178) }
```

If only the background color should be changed can be used:

```
.background{ background-color: rgb(219,  
184, 178) }
```

This example shows the color as background, it is applied via the CSS property "background".

To optimize and compress your CSS code, you can use our [online CSS compressor and optimizer](#) based on csstidy. If you want to create a linear or radial gradient as background or border, check our [CSS Gradient Generator](#).



Hey! You found this booklet interesting? Support Converting Colors with the new Membership Option!

The pro membership hides all ads, plus gives you double the colors in the color bucket, and more awesome pro features!

**[Learn more, Memberships starting at \\$2.50/m!](#)**

**Follow me  
on Twitter!**

@ConvertingColor