

Converting Colors

Android(4292589981)

Have a look what the booklet for
Android(4292589981) contains.

Android(4292589981)	3
<i>Conversions</i>	4
<i>Details</i>	6
<i>Harmonies</i>	11
<i>Previews</i>	23
<i>Color Blindness Simulation</i>	26
<i>CSS Examples</i>	29

Color

Android(4292589981)

Conversions

Conversions Part 1

Format	Color
Hex	DBB99D
RGB	219, 185, 157
RGB Percent	86%, 73%, 62%
CMY	0.1412, 0.2745, 0.3843
CMYK	0.00, 0.16, 0.28, 0.14
HSL	27°, 46%, 74%
HSV	27°, 28%, 86%
XYZ	52.6482, 52.1923, 39.1976
YIQ	191.9740, 29.2520, -1.5000

Conversions

Conversions Part 2

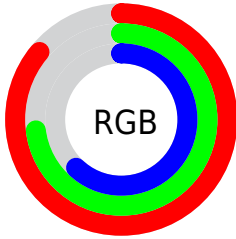
Format	Color
RYB	219, 208, 157
Decimal	14399901
CIELab	77.40, 8.06, 18.75
CIELCh	77, 20.412, 66.732
Yxy	52.1923, 0.3655, 0.3624
Android (android.graphics.Color)	4292589981 (0xFFDDBB99D)
YUV	191.9740, -17.2422, 23.7018
Hunter-Lab	72.2442, 3.6549, 18.4020

Details

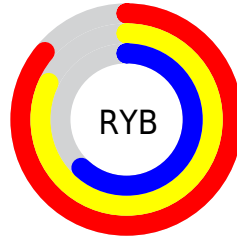
The Android color `4292589981` is a light color, and the websafe version is hex `FFCC99`. A complement of this color would be `4288528347`, and the grayscale version is `4290822336`.

A 20% lighter version of the original color is `4294963668`, and `4288906346` is the 20% darker color. If you saturate the color by 10%, you get `4292586887`, and if you desaturate by 10%, it is `4292593075`.

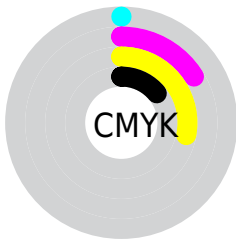
Distribution



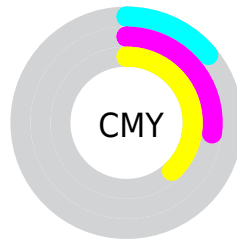
- Red (86%)
- Green (73%)
- Blue (62%)



- Red (86%)
- Yellow (82%)
- Blue (62%)



- Cyan (0%)
- Magenta (16%)
- Yellow (28%)
- Black (14%)



- Cyan (14%)
- Magenta (27%)
- Yellow (38%)

Brightness & Saturation Gradients

These gradients show how the Android color 4292589981 changes by changing the brightness by 10 percent. The first figure shows a shift by +10% for each color and the second figure -10%.

Similar to the brightness gradients but the following saturation gradients show a change of the Android color 4292589981 by changing the saturation by 10% instead.



4292589981



4292589981

4294967295



4290748035



4294963668



4288906346



4294967280



4287130449



4285420346



4283776036



4282197519



4280685056



4278190080



4292589981



4292589981

 4292586887

 4292593075

 4292583793

 4292596169

 4292580699

 4292599263

 4292577605

 4292602357

 4292574512

 4292605439

 4292571418

 4292607999

 4292568324

 4292567808

Harmonies

Analogous

The Analogous color harmony consists of three colors that are next to each other on the color wheel.



4293244073



4292589981



4291477402

Triad

The Triadic color harmony groups three colors that are evenly spaced from another and form a triangle on the color wheel.



4292589981



4287679171



4291344861

Complementary

The Complementary color scheme is a pair of colors which are on the opposite of each other on the color wheel.



4292589981



4288528347

Split Complementary

Split-complementary colors differ from the complementary color scheme. The scheme consists of three colors, the original color and two neighbors of the complement color.



4289708004



4292589981



4287482325

Square

The Square scheme is like the rectangle color scheme, but the four colors are evenly spaced on the color wheel.



4292589981



4288661936



4288267745



4292654287

Rectangle

The Rectangle color scheme consists of four colors that form a rectangle on the color wheel.



4292589981



4290560925



4288267745



4290821089

Sweetspot

The Sweet Spot groups the original color and five complimentary colors.



4292589981



4294964459



4292582847



4286609779



4278190080



4286611584

Same Dimension

The Same Dimension uses a secret algorithm to generate beautiful new colors.



4292589981



4294954920



4292597917



4285425763



4289547776



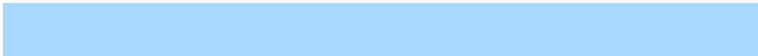
4281210112

Inverse Universe

The Inverse Universe completely reimagines the original color for something new.



4288528347



4289255679



4288520411



4284705134



4278214573



4278196526

Previews

White Background



This preview shows how the Android color 4292589981 looks on a white background.

Color Contrast Check

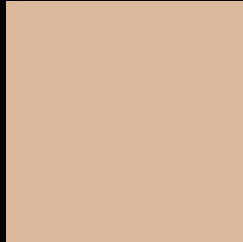
Large Text (above 18pt) WCAG AA × Fail

Any Text WCAG AA × Fail

Large Text (above 18pt) WCAG AAA × Fail

Any Text WCAG AAA × Fail

Black Background



This preview shows how the Android color 4292589981 looks on a black background.

Color Contrast Check

Large Text (above 18pt) WCAG AA ✓ Pass

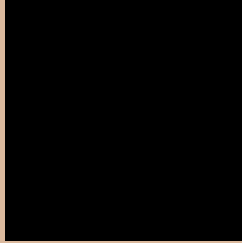
Any Text WCAG AA ✓ Pass

Large Text (above 18pt) WCAG AAA ✓ Pass

Any Text WCAG AAA ✓ Pass

If you want to check with other color combinations, try the [Color Contrast Checker](#).

Android 4292589981 Background



This preview shows how black text looks on a background with the Android color 4292589981.



This preview shows how white text looks on a background with the Android color 4292589981.

Color Blindness Simulation

Color vision deficiency is a very complex topic, and I could not describe the different causes any better than Wikipedia does, so if you want to learn more, you should check out their [article about color blindness](#).


Dichromacy



Original Color
4292589981

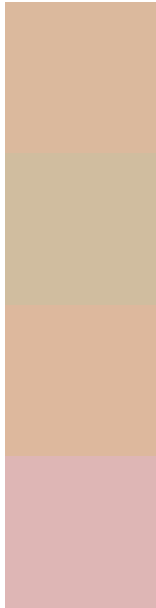
Protanopia
4291477408

Deuteranopia
4292786333



Tritanopia
4292850882

Trichromacy



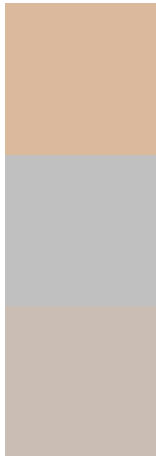
Original Color
4292589981

Protanomaly
4291870111

Deuteranomaly
4292720797

Tritanomaly
4292785845

Monochromacy



Original Color
4292589981

Achromatopsia
4290822336

Achromatomaly
4291476915

CSS Examples

Text

The CSS property to change the color of the text to Android 4292589981 is called "color". The color property can be set on classes, ids or directly on the HTML element.

This example shows how text in the color `rgb(219, 185, 157)` looks like.

```
.text, #text, p{  
    color:rgb(219, 185, 157)  
}
```

If you want to add a text shadow in that color use the text-shadow property, you can generate a text shadow directly with our [CSS Text Shadow Generator](#).

Here you see how black text with a 4 pixel rgb(219, 185, 157) colored shadow looks like.

```
.shadow{ text-shadow: 4px 4px 2px rgb(219, 185, 157) }
```

Border

The CSS property to change the border of an element to Android 4292589981 is called "border". The border property can be set on classes, ids or directly on the HTML element.

This example shows the color as border, it can be applied via the CSS property "border" or "border-color".

```
.border, #border, table{ border:4px solid rgb(219, 185, 157) }
```

If only the border color should be changed use the property `border-color`.

```
.border{ border-color:rgb(219, 185, 157) }
```

If you want to add a box shadow in that color use:

Here you see how a box with a 4 pixel `rgb(219, 185, 157)` colored shadow looks like.

```
.boxshadow{ -moz-box-shadow:4px 4px 4px  
4px rgb(219, 185, 157); -webkit-box-  
shadow:4px 4px 4px 4px rgb(219, 185, 157);  
box-shadow:4px 4px 4px 4px rgb(219, 185,  
157) }
```

Background

The CSS property to change the background color of an element to Android 4292589981 is called "background". The background property can be set on classes, ids or directly on the HTML element.

```
.background, #background, body{  
background: rgb(219, 185, 157) }
```

If only the background color should be changed can be used:

```
.background{ background-color: rgb(219,  
185, 157) }
```

This example shows the color as background, it is applied via the CSS property "background".

To optimize and compress your CSS code, you can use our [online CSS compressor and optimizer](#) based on csstidy. If you want to create a linear or radial gradient as background or border, check our [CSS Gradient Generator](#).

Hey! You found this booklet interesting? Support Converting Colors with the new Membership Option!

The pro membership hides all ads, plus gives you double the colors in the color bucket, and more awesome pro features!

[Learn more, Memberships starting at \\$2.50/m!](#)

**Follow me
on Twitter!**

@ConvertingColor