

Converting Colors

Android(4292591801)

Have a look what the booklet for
Android(4292591801) contains.

Android(4292591801)	3
<i>Conversions</i>	4
<i>Details</i>	6
<i>Harmonies</i>	11
<i>Previews</i>	23
<i>Color Blindness Simulation</i>	26
<i>CSS Examples</i>	29

Color

Android(4292591801)

Conversions

Conversions Part 1

Format	Color
Hex	DBC0B9
RGB	219, 192, 185
RGB Percent	86%, 75%, 73%
CMY	0.1412, 0.2471, 0.2745
CMYK	0.00, 0.12, 0.16, 0.14
HSL	12°, 32%, 79%
HSV	12°, 16%, 86%
XYZ	56.8200, 56.2621, 53.7639
YIQ	199.2750, 18.3390, 3.5470

Conversions

Conversions Part 2

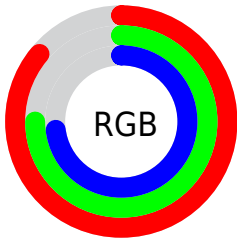
Format	Color
R _Y B	219, 194, 185
Decimal	14401721
CIE Lab	79.76, 8.43, 7.03
CIE LCh	80, 10.978, 39.817
Yxy	56.2621, 0.3406, 0.3372
Android (android.graphics.Color)	4292591801 (0xFFDBC0B9)
YUV	199.2750, -7.0376, 17.2988
Hunter-Lab	75.0081, 3.9529, 10.0081

Details

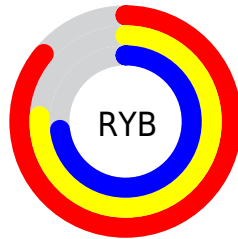
The Android color `4292591801` is a light color, and the websafe version is hex `CCCCCC`. A complement of this color would be `4290368731`, and the grayscale version is `4291282887`.

A 20% lighter version of the original color is `4294965489`, and `4288973700` is the 20% darker color. If you saturate the color by 10%, you get `4292587427`, and if you desaturate by 10%, it is `4292596175`.

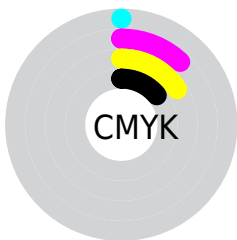
Distribution



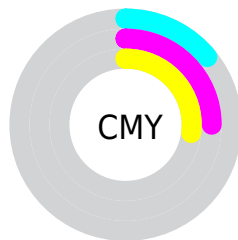
- Red (86%)
- Green (75%)
- Blue (73%)



- Red (86%)
- Yellow (76%)
- Blue (73%)



- Cyan (0%)
- Magenta (12%)
- Yellow (16%)
- Black (14%)



- Cyan (14%)
- Magenta (25%)
- Yellow (27%)

Brightness & Saturation Gradients

These gradients show how the Android color 4292591801 changes by changing the brightness by 10 percent. The first figure shows a shift by +10% for each color and the second figure -10%.

Similar to the brightness gradients but the following saturation gradients show a change of the Android color 4292591801 by changing the saturation by 10% instead.

 4292591801

 4292591801

4294967295

 4290749854

 4294965489

 4288973700

 4287197547

 4285552979

 4283908412

 4282329894

 4280882705

 4279369728

 4278190080

 4292591801

 4292591801

 4292587427

 4292596175

 4292582797

 4292600805

 4292578423

 4292605179

 4292573793

 4292607999

 4292569420

 4292565046

 4292560416

 4292556042

 4292553984

Harmonies

Analogous

The Analogous color harmony consists of three colors that are next to each other on the color wheel.



4292657091



4292591801



4292199347

Triad

The Triadic color harmony groups three colors that are evenly spaced from another and form a triangle on the color wheel.



4292591801



4290038718



4290758106

Complementary

The Complementary color scheme is a pair of colors which are on the opposite of each other on the color wheel.



4292591801



4290368731

Split Complementary

Split-complementary colors differ from the complementary color scheme. The scheme consists of three colors, the original color and two neighbors of the complement color.



4290038233



4292591801



4289580233

Square

The Square scheme is like the rectangle color scheme, but the four colors are evenly spaced on the color wheel.



4292591801



4290759094



4289579986



4291609301

Rectangle

The Rectangle color scheme consists of four colors that form a rectangle on the color wheel.



4292591801



4291741105



4289579986



4290496474

Sweetspot

The Sweet Spot groups the original color and five complimentary colors.



4292591801



4294964722



4292590036



4286609784



4278190080



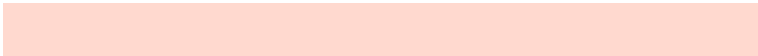
4286611584

Same Dimension

The Same Dimension uses a secret algorithm to generate beautiful new colors.



4292591801



4294957519



4292596153



4285424995



4289537024



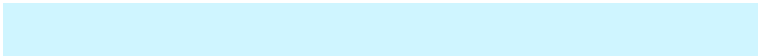
4281207040

Inverse Universe

The Inverse Universe completely reimagines the original color for something new.



4290368731



4291819007



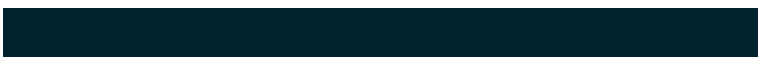
4290364379



4284705646



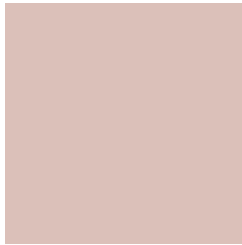
4278225581



4278199342

Previews

White Background



This preview shows how the Android color 4292591801 looks on a white background.

Color Contrast Check

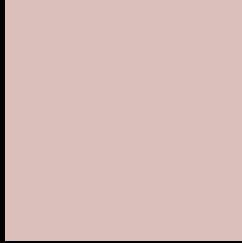
Large Text (above 18pt) WCAG AA × Fail

Any Text WCAG AA × Fail

Large Text (above 18pt) WCAG AAA × Fail

Any Text WCAG AAA × Fail

Black Background



This preview shows how the Android color 4292591801 looks on a black background.

Color Contrast Check

Large Text (above 18pt) WCAG AA ✓ Pass

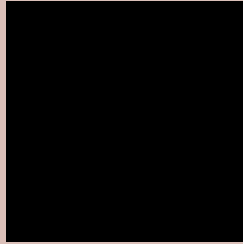
Any Text WCAG AA ✓ Pass

Large Text (above 18pt) WCAG AAA ✓ Pass

Any Text WCAG AAA ✓ Pass

If you want to check with other color combinations, try the [Color Contrast Checker](#).

Android 4292591801 Background



This preview shows how black text looks on a background with the Android color 4292591801.



This preview shows how white text looks on a background with the Android color 4292591801.

Color Blindness Simulation

Color vision deficiency is a very complex topic, and I could not describe the different causes any better than Wikipedia does, so if you want to learn more, you should check out their [article about color blindness](#).

Dichromacy



Original Color
4292591801

Protanopia
4291610044

Deuteranopia
4292788153



Tritanopia
4292722124

Trichromacy



Original Color
4292591801

Protanomaly
4291937211

Deuteranomaly
4292722617

Tritanomaly
4292656837

Monochromacy



Original Color
4292591801

Achromatopsia
4291282887

Achromatomaly
4291740866

CSS Examples

Text

The CSS property to change the color of the text to Android 4292591801 is called "color". The color property can be set on classes, ids or directly on the HTML element.

This example shows how text in the color `rgb(219, 192, 185)` looks like.

```
.text, #text, p{  
    color:rgb(219, 192, 185)  
}
```

If you want to add a text shadow in that color use the text-shadow property, you can generate a text shadow directly with our [CSS Text Shadow Generator](#).

Here you see how black text with a 4 pixel rgb(219, 192, 185) colored shadow looks like.

```
.shadow{ text-shadow: 4px 4px 2px rgb(219, 192, 185) }
```

Border

The CSS property to change the border of an element to Android 4292591801 is called "border". The border property can be set on classes, ids or directly on the HTML element.

This example shows the color as border, it can be applied via the CSS property "border" or "border-color".

```
.border, #border, table{ border:4px solid rgb(219, 192, 185) }
```

If only the border color should be changed use the property `border-color`.

```
.border{ border-color:rgb(219, 192, 185) }
```

If you want to add a box shadow in that color use:

Here you see how a box with a 4 pixel `rgb(219, 192, 185)` colored shadow looks like.

```
.boxshadow{ -moz-box-shadow:4px 4px 4px  
4px rgb(219, 192, 185); -webkit-box-  
shadow:4px 4px 4px 4px rgb(219, 192, 185);  
box-shadow:4px 4px 4px 4px rgb(219, 192,  
185) }
```

Background

The CSS property to change the background color of an element to Android 4292591801 is called "background". The background property can be set on classes, ids or directly on the HTML element.

```
.background, #background, body{  
background: rgb(219, 192, 185) }
```

If only the background color should be changed can be used:

```
.background{ background-color: rgb(219,  
192, 185) }
```

This example shows the color as background, it is applied via the CSS property "background".

To optimize and compress your CSS code, you can use our [online CSS compressor and optimizer](#) based on csstidy. If you want to create a linear or radial gradient as background or border, check our [CSS Gradient Generator](#).

Hey! You found this booklet interesting? Support Converting Colors with the new Membership Option!

The pro membership hides all ads, plus gives you double the colors in the color bucket, and more awesome pro features!

[Learn more, Memberships starting at \\$2.50/m!](#)

**Follow me
on Twitter!**

@ConvertingColor